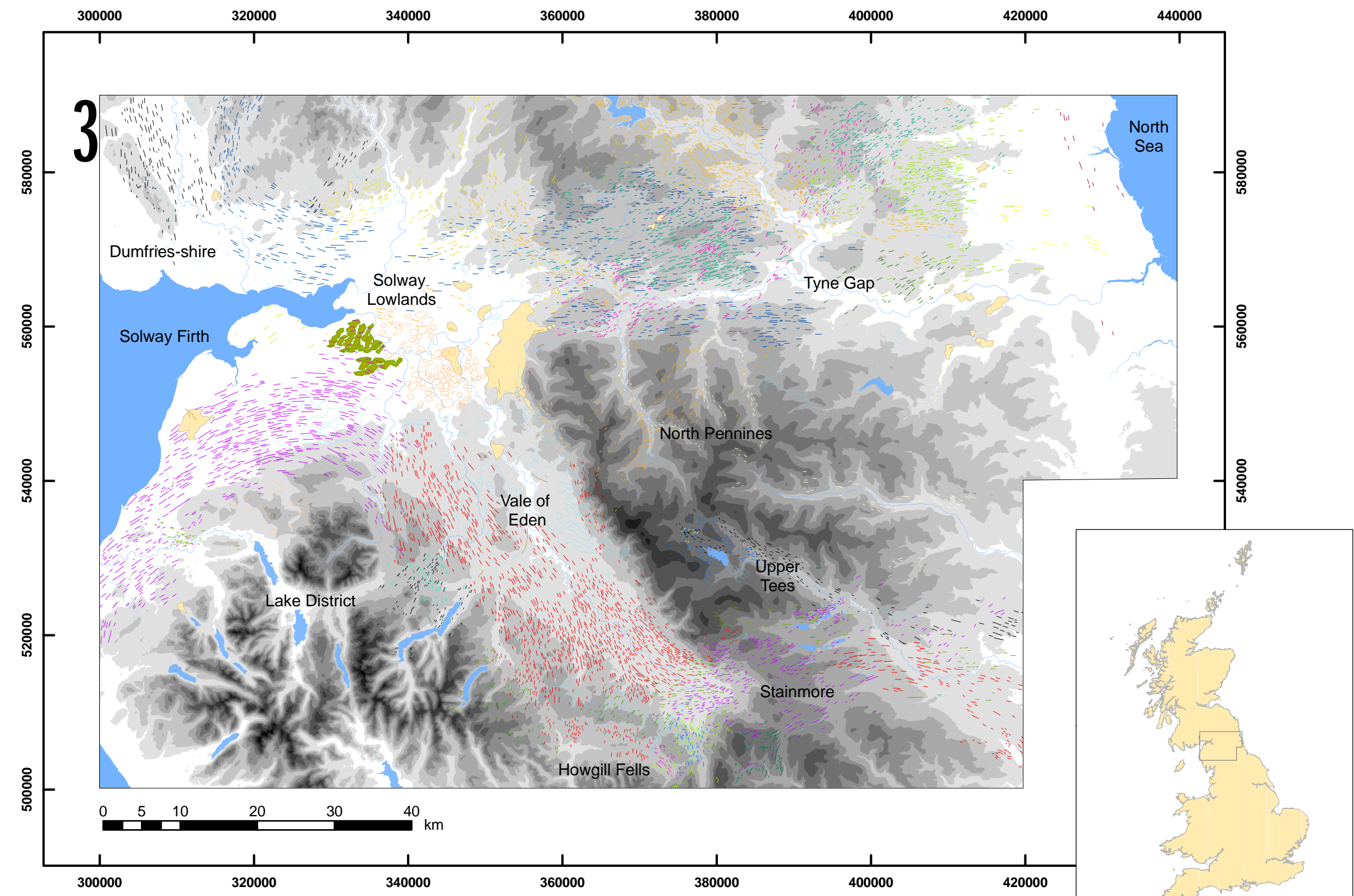


# Glacial geomorphology of the central sector of the last British-Irish Ice Sheet

Stephen J. Livingstone, Colm O'Cofaigh and David J.A. Evans  
Department of Geography, Durham University, South Road, Durham, DH1 3LE, UK; s.j.livingstone@dur.ac.uk  
Mapping based on NEXTMap data (NEXTMap Britain data from Intermap Technologies Inc. were provided courtesy of NERC via the NERC Earth Observation Data Centre).  
British National Grid reference system. Horizontal Datum: ETRS89. Vertical Datum: ODN (OSGM91).  
Projection: Transverse Mercator, airy spheroid, OSGB36.

- Legend:
- Rivers
  - Water bodies
- Glacial Features
- Glacial sands and gravels
  - Ribbed Moraine
  - Hummocky Terrain
  - Meltwater channels
  - Eskers
  - Lineations, colour coded in relation to interpreted ice flow phases
- A Dumfries-shire
- Phase 1
- B1 Tyne Gap
- Phase 1
  - Phase 2
  - Phase 3
  - Phase 4
  - Phase 5
  - Phase 6
  - Phase 7
  - Phase 4-7
  - Phase 1-7
- B2 Tyne Gap
- Phase 1/2
  - Phase 1/2
- C Vale of Eden
- Phase 1
  - Phase 2
  - Phase 3
  - Phase 4
  - Phase 5
  - Phase 1-2
  - Phase 1-4
  - Phase 1-5
- D1 Stainmore-Howgill Fells
- Phase 1
  - Phase 2
  - Phase 3
- D2 Stainmore-Howgill Fells
- Phase 1
- D3 Stainmore-Upper Tees
- Phase 1
  - Phase 2
  - Phase 3
- D4 Stainmore
- Phase 1
  - Phase 2
  - Phase 3
  - Phase 2-3
  - Phase 1-3
- E East Coast
- Phase 1
- F North Pennines
- Phase 1
- G Valley Glaciers
- Pennines



Spatial Resolution: 5m posts  
Vertical Accuracy: 1m