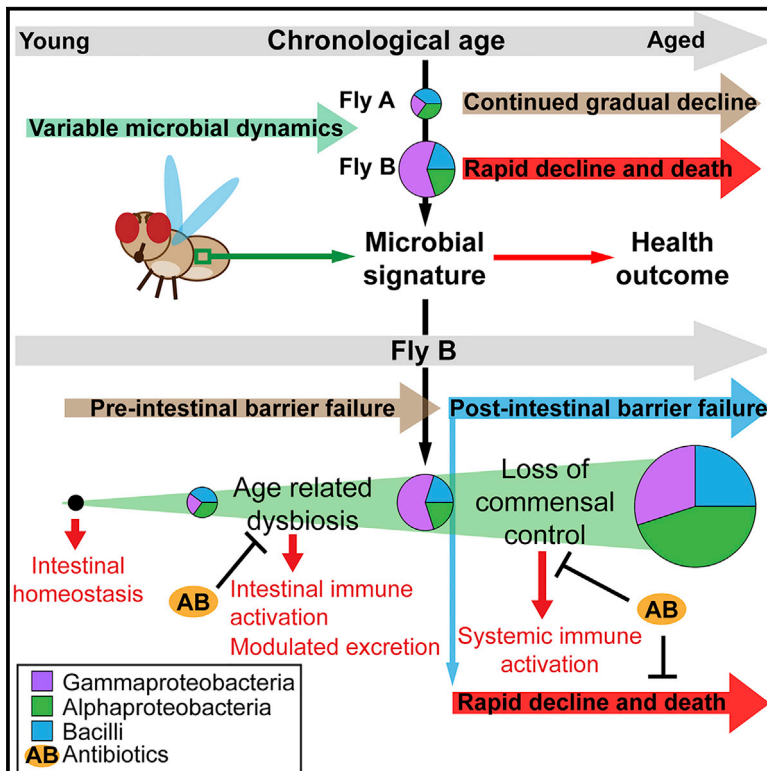


# Cell Reports

## Distinct Shifts in Microbiota Composition during *Drosophila* Aging Impair Intestinal Function and Drive Mortality

### Graphical Abstract



### Authors

Rebecca I. Clark, Anna Salazar, Ryuichi Yamada, ..., Matteo Pellegrini, William W. Ja, David W. Walker

### Correspondence

rebecca.clark2@durham.ac.uk (R.I.C.), davidwalker@ucla.edu (D.W.W.)

### In Brief

The relationship between microbiota dynamics and age-related changes in organismal health are poorly understood. Using *Drosophila*, Clark et al. show that dysbiosis of the intestinal microbiota precedes and predicts age-related intestinal barrier dysfunction. Age-related alterations in the microbiota contribute to intestinal immune activation, modulate excretory function, and ultimately lead to mortality.

### Highlights

- Age-related dysbiosis in *Drosophila* is characterized by Gammaproteobacteria expansion
- Dysbiosis predicts age-onset intestinal barrier dysfunction and rapid health decline
- Age-related dysbiosis drives changes in excretory function
- Loss of commensal control following intestinal barrier dysfunction drives mortality



# Distinct Shifts in Microbiota Composition during *Drosophila* Aging Impair Intestinal Function and Drive Mortality

Rebecca I. Clark,<sup>1,6,\*</sup> Anna Salazar,<sup>1</sup> Ryuichi Yamada,<sup>2</sup> Sorel Fitz-Gibbon,<sup>3,4</sup> Marco Morselli,<sup>3</sup> Jeanette Alcaraz,<sup>1</sup> Anil Rana,<sup>1</sup> Michael Rera,<sup>1,7</sup> Matteo Pellegrini,<sup>3,4</sup> William W. Ja,<sup>2</sup> and David W. Walker<sup>1,5,\*</sup>

<sup>1</sup>Department of Integrative Biology and Physiology, University of California, Los Angeles, Los Angeles, CA 90095, USA

<sup>2</sup>Department of Metabolism and Aging, The Scripps Research Institute, Jupiter, FL 33458, USA

<sup>3</sup>Department of Molecular, Cell and Developmental Biology, University of California, Los Angeles, Los Angeles, CA 90095, USA

<sup>4</sup>Institute for Genomics and Proteomics, University of California, Los Angeles, Los Angeles, CA 90095, USA

<sup>5</sup>Molecular Biology Institute, University of California, Los Angeles, Los Angeles, CA 90095, USA

<sup>6</sup>Present address: School of Biological and Biomedical Sciences, Durham University, Durham DH1 3LE, UK

<sup>7</sup>Present address: Laboratory of Degenerative Processes, Stress and Aging, Université Paris Diderot, Paris 75013, France

\*Correspondence: [rebecca.clark2@durham.ac.uk](mailto:rebecca.clark2@durham.ac.uk) (R.I.C.), [davidwalker@ucla.edu](mailto:davidwalker@ucla.edu) (D.W.W.)

<http://dx.doi.org/10.1016/j.celrep.2015.08.004>

This is an open access article under the CC BY license (<http://creativecommons.org/licenses/by/4.0/>).

## SUMMARY

Alterations in the composition of the intestinal microbiota have been correlated with aging and measures of frailty in the elderly. However, the relationships between microbial dynamics, age-related changes in intestinal physiology, and organismal health remain poorly understood. Here, we show that dysbiosis of the intestinal microbiota, characterized by an expansion of the Gammaproteobacteria, is tightly linked to age-onset intestinal barrier dysfunction in *Drosophila*. Indeed, alterations in the microbiota precede and predict the onset of intestinal barrier dysfunction in aged flies. Changes in microbial composition occurring prior to intestinal barrier dysfunction contribute to changes in excretory function and immune gene activation in the aging intestine. In addition, we show that a distinct shift in microbiota composition follows intestinal barrier dysfunction, leading to systemic immune activation and organismal death. Our results indicate that alterations in microbiota dynamics could contribute to and also predict varying rates of health decline during aging in mammals.

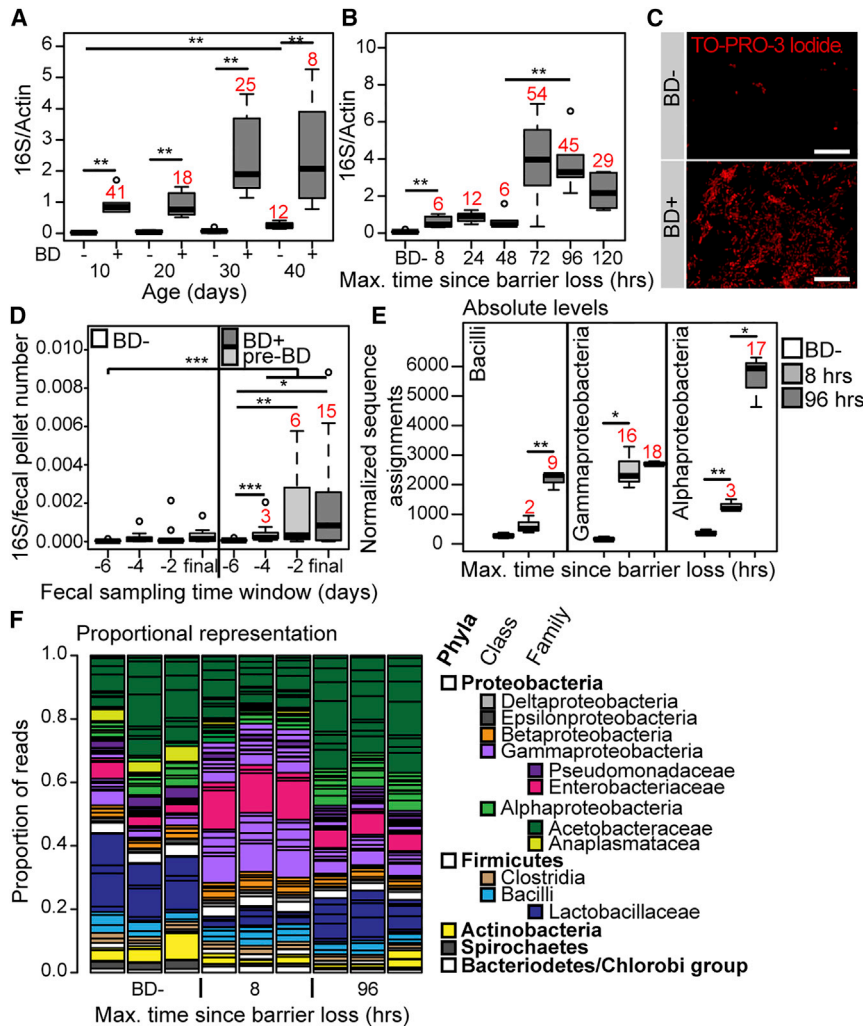
## INTRODUCTION

The composition of the intestinal microbiota co-develops with the host from birth and is subject to a complex interplay involving genetics, diet, and lifestyle (Nicholson et al., 2012). Dysbiosis of the microbiota has been implicated in a growing number of human disorders, including inflammatory bowel disease, obesity, cardiovascular disease, and neurological disorders (Blumberg and Powrie, 2012; Carding et al., 2015; Khan et al., 2014). Aging is a major risk factor for many of these disorders, and recent studies have found that the microbiota of older people is different

than that of younger adults (Claesson et al., 2011) and that microbiota composition in the elderly correlates with measures of frailty, comorbidity, and inflammation (Claesson et al., 2012). However, fundamental questions remain regarding the relationships between age-related changes in microbiota composition and the pathophysiology of aging.

The fruit fly *Drosophila melanogaster* is an excellent model to study the interplay between microbial dynamics, intestinal aging, and organismal health. In aged flies, excessive proliferation of intestinal stem cells and the accumulation of mis-differentiated cells in the intestinal epithelium result in intestinal dysplasia (Biteau et al., 2008; Choi et al., 2008; Park et al., 2009), which limits organismal lifespan (Biteau et al., 2010; Hur et al., 2013; Rera et al., 2011; Wang et al., 2014). Previous studies have reported increased microbial loads in aged *Drosophila* populations (Broderick et al., 2014; Buchon et al., 2009; Guo et al., 2014; Ren et al., 2007) and that flies maintained axenically throughout life display reduced levels of dysplasia and other cellular markers of intestinal aging (Broderick et al., 2014; Buchon et al., 2009; Guo et al., 2014). These findings clearly demonstrate that the presence of gut-associated microbes contributes to cellular changes in the aging intestine. However, the nature of age-related alterations in microbiota composition and how microbiota composition relates to changes in intestinal function and fly health, during aging, remains largely unexplored.

A major challenge in determining how age-related changes in microbiota composition relate to the health of the host relates to the sampling of “aged” individuals. In a population of chronologically age-matched animals, there exists large variation in physiological health and remaining lifespan (Kirkwood et al., 2005). Hence, it can prove difficult to interpret data describing microbiota composition in a population of aged animals and/or in individual animals without knowledge of health status. Recently, we reported that loss of intestinal barrier function accompanies aging across a range of *Drosophila* genotypes and, critically, is a harbinger of organismal death (Rera et al., 2012). In the present work, we show that, regardless of chronological age, loss of intestinal barrier



**Figure 1. Alterations in Microbiota Composition Are Linked to Age-Onset Intestinal Barrier Dysfunction**

(A and B) Bacterial levels assayed by qPCR of the 16S rRNA gene in dissected intestines from Smurfs (BD+) and non-Smurf controls (BD-) at 10-day intervals to day 40 (A) and during a time course following barrier dysfunction at day 30 (B). n = 6 replicates of five dissected intestines. Numbers in red indicate fold change of the median compared to the relevant BD- control.

(C) Representative images of bacteria visualized by TO-PRO-3 DNA stain in the posterior midgut lumen of BD- or 5-day post-BD+ (red channel, TO-PRO-3 DNA stain; scale bar represents 10  $\mu$ m).

(D) Time series data of 16S qPCR in fecal samples of individual 40- to 50-day-old flies, grouped as BD- or pre-BD+ depending on their phenotype during the first 24 hr of the final 48 hr sampling window. n = 12–14 individuals. Numbers in red indicate fold change of the median compared to the -6 pre-BD time point.

(E) Normalized number of sequence assignments at the class taxonomic level in 8- and 96-hr post-BD+ and BD-. Only the most-abundant groups are shown. n = 3 replicates of five dissected intestines at day 30. Numbers in red indicate fold change of the median compared to the relevant BD- control. \*p < 0.05; \*\*p < 0.01; \*\*\*p < 0.001.

Wilcoxon test was used for (A), (B), and (D); t test was used for (E).

function is tightly linked to dysbiosis of the microbiota, characterized by early expansion of the Gammaproteobacteria and a concomitant decrease in the proportion of taxa in the phylum Firmicutes. At the organismal level, we demonstrate that age-onset intestinal barrier failure is a prerequisite for the systemic effects of intestinal dysbiosis on immune gene activity and that a dramatic expansion of the commensal population, characterized by an increased proportion of Alphaproteobacteria, follows intestinal barrier failure and drives mortality. Our findings reveal that distinct shifts in microbial dynamics are tightly linked to distinct events in the pathophysiological decline of the aging organism and that preventing age-associated dysbiosis in animals showing intestinal barrier dysfunction can dramatically improve organismal health.

## RESULTS

### Distinct Shifts in Microbial Dynamics Occur before and after Age-Onset Intestinal Barrier Dysfunction

Previously, we reported that flies showing intestinal barrier dysfunction (which we refer to as Smurfs due to the presence

of a non-absorbable blue dye outside of the gut post-feeding), in mid-life, had increased internal bacterial loads relative to age-matched control flies (Rera et al., 2012). Here, we utilized universal primers to the bacterial 16S rRNA gene for a qPCR approach to further characterize alterations in microbiota dynamics in relation to aging and age-onset intestinal barrier dysfunction. Across the lifespan of  $w^{1118}$  female flies, dissected intestinal samples from Smurfs consistently showed strikingly higher bacterial loads when compared to age-matched controls (Figure 1A). Therefore, regardless of chronological age, loss of intestinal barrier function is tightly linked to altered microbial dynamics. To assess the kinetics of microbiota changes in relation to intestinal barrier dysfunction, we utilized a large population of 30-day-old  $w^{1118}$  female flies to identify groups of individuals that had lost barrier function within a very short 8- or 24-hr time window. An initial small, but significant, increase in bacterial load was detectable in dissected intestinal samples within 8 hr of barrier dysfunction; this was followed by a second, larger increase that occurred 3 days following barrier loss (Figure 1B). The extent of this later bacterial load increase is highlighted by

TO-PRO-3 staining of bacterial cells in the intestinal lumen of 5-day post-Smurf flies and age-matched non-Smurf controls (Figure 1C).

Forty-day-old non-Smurfs showed a small, but significant, elevation in bacterial levels when compared to 10-day-old non-Smurfs (Figure 1A), indicating that alterations in bacterial load occur prior to barrier failure. To confirm and extend upon this finding, we took a fecal sampling approach to follow bacterial load dynamics over a 10-day time course in individually housed 40-day-old non-Smurf female flies. Fecal samples from flies that lost barrier function toward the end of the 10-day time course showed significantly increased bacterial loads, apparent as early as 4 days prior to a detectable loss of barrier function, when compared to controls that did not (Figure 1D). Taken together, these data demonstrate that alterations in microbiota dynamics precede and predict age-onset intestinal barrier failure, which is followed by a second larger expansion of the microbiota.

### Gammaproteobacteria Expansion Is Associated with Intestinal Barrier Dysfunction

The microbiota of laboratory *Drosophila* has been well characterized (reviewed in Broderick and Lemaitre, 2012 and Erkosar et al., 2013), and temporal fluctuations in this population occur through the life stages (Wong et al., 2011) and with changes in immune function (Ryu et al., 2008). In order to assess whether changes in microbial composition, in addition to changes in bacterial load, were associated with age-onset barrier dysfunction, we took a metagenomics approach. Genomic DNA extractions from dissected intestines of 30-day-old *w<sup>1118</sup>* female non-Smurfs, Smurfs that were within 8 hr of barrier dysfunction, and Smurfs that were 96 hr following barrier dysfunction were sequenced in a shotgun approach on the Illumina platform. The resulting sequences were assigned to the NCBI taxonomy using MEGAN software (Huson et al., 2007).

Bacterial taxon assignments were largely in agreement with previous studies of the *Drosophila* microbiota, with members of the Lactobacillales (on average 14%) and Enterobacteriales (8%) orders and the Acetobacteriaceae (23%) family being the most abundant (Figure S1). The *Drosophila* endosymbiont *Wolbachia* was also present at low abundance in all of our samples (Figure S1). However, our analysis also identified 21 additional taxa at an abundance equal to or higher than *Wolbachia* (Figure S1), each of which was represented by only 0.1%–5% of the total bacterial sequences but which together made up, on average, 36% of the total bacterial sequence assignments. A large number of further taxa were represented by a very low number of read assignments that nevertheless made up, on average, 10% of the total bacterial reads. These taxa were less consistently present across samples but may reflect additional diversity. Finally, a low abundance of non-bacterial taxa were also identified, including fungi (Figure S1), other microbial eukaryotes, archaea, and viral taxa (Figure S2A). To our knowledge, the identification of this level of diversity is unprecedented in a laboratory *Drosophila* stock. It is unclear whether this reflects differences in genotype or rearing conditions between laboratories or the use of different methodologies for microbial characterization.

With the exception of the Caudovirales, an order of bacteriophages, the non-bacterial taxa identified did not increase

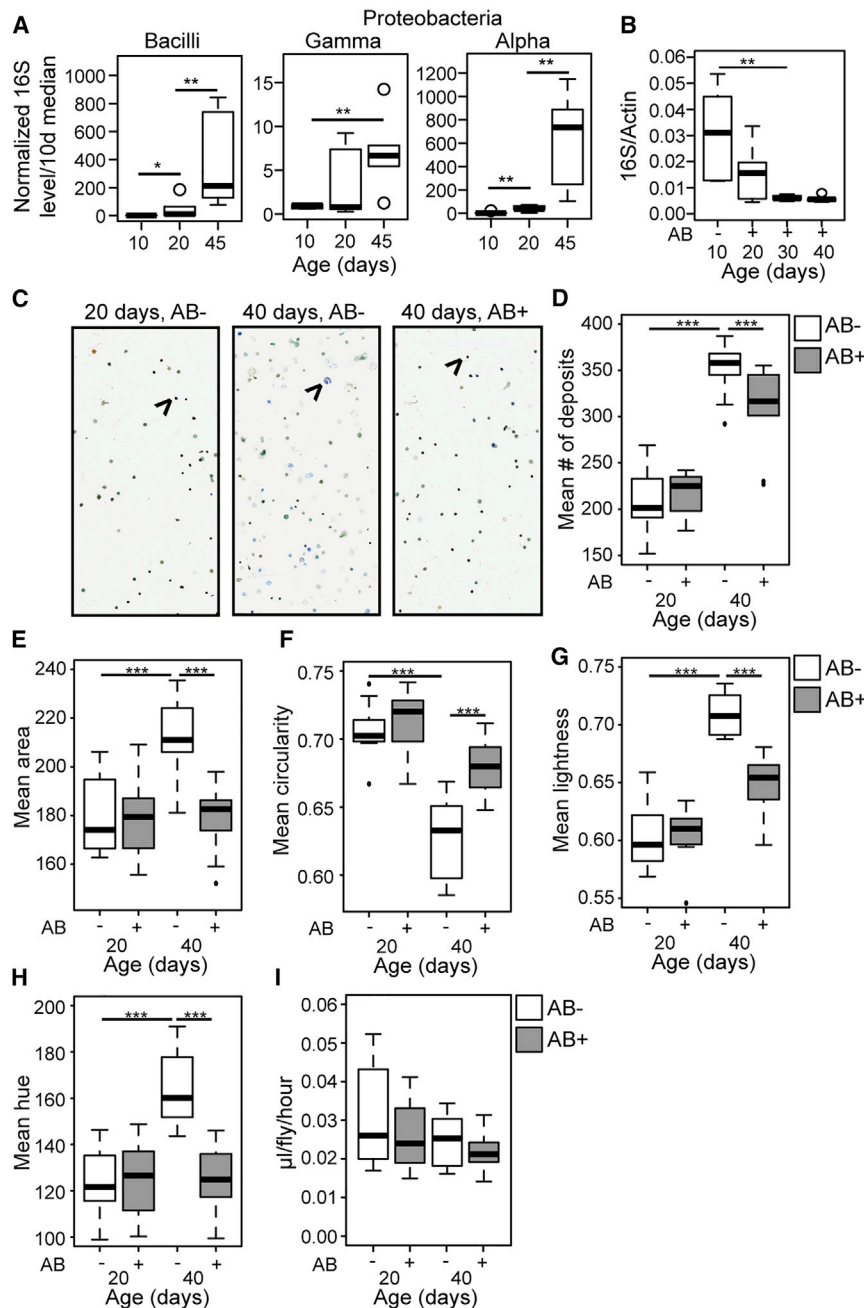
in abundance following intestinal barrier dysfunction (Figure S2A). Given this, in addition to the significantly lower abundance of these taxa when compared to the bacterial component of the microbiota, we chose to focus on the bacterial component in the rest of this study. Most bacterial taxa were present in all samples and increased in abundance following barrier dysfunction (Figure S1). However, the kinetics of microbial growth varied between taxa, resulting in striking differences in population composition between non-Smurf flies and the early and late time points post-Smurf. *Wolbachia* levels were not increased following barrier dysfunction (Figure S1). At the class level, sequence assignments to taxa within the Gammaproteobacteria show a striking increase in animals that have lost barrier function within an 8 hr window (Figure 1E). This is in contrast to taxa within the Bacilli and Alphaproteobacteria, which show the greatest increase at 96-hr post-Smurf (Figure 1E). The proportional representation of each taxon clearly illustrates the Gammaproteobacteria expansion at the 8-hr post-Smurf time point (Figure 1F). At the 96-hr post-Smurf time point, the proportional representation of the Gammaproteobacteria was similar to that found in the non-Smurf samples; however, the proportion of Alphaproteobacteria was increased and the phylum Firmicutes showed a concomitant decrease (Figure 1F). We also noted shifts in taxon dominance at the species level. For example, *L. fructivorans* was the most-abundant *Lactobacillus* species in our non-Smurf samples, whereas *L. brevis* became dominant at 96 hr post-Smurf (Figure S1).

In order to establish how consistently these changes in the microbial population could be associated with barrier dysfunction, we generated primers to the 16S rRNA gene that would be suitable for quantitative PCR and that were specific to the classes Bacilli, Gammaproteobacteria, and Alphaproteobacteria. We confirmed primer specificity by cloning and sequencing a number of 16S amplicons generated by each primer pair (Table S1). Quantitative PCR of taxa-specific 16S from samples collected in three independent experiments conducted several months apart consistently showed significantly increased Gammaproteobacteria levels at 8 hr post-Smurf and increased Bacilli and Alphaproteobacteria at 96 hr post-Smurf (Figure S2B). Taking these data together with the increase in total 16S levels prior to detectable barrier dysfunction strongly suggests that Gammaproteobacteria expansion begins to occur prior to intestinal barrier failure.

### Microbiota Changes Occurring prior to Barrier Failure Impair Excretory Function in Aging Flies

We next utilized our taxa-specific 16S qPCR primers to follow bacterial population dynamics with age in *w<sup>1118</sup>* non-Smurf females. Each bacterial class showed significantly increased levels with age, apparent from midlife (Figure 2A). The Gammaproteobacteria showed a large increase in variability at midlife, suggesting that the proportional representation of these bacterial classes is modified in the microbial population at an early age in some individuals. Expansion of the Gammaproteobacteria is, therefore, an early event in the development of age-related dysbiosis (Figure 2A). This midlife time point coincides with when the population begins to show an increased incidence of intestinal barrier dysfunction.





**Figure 2. Age-Related Dysbiosis Impacts Intestinal Physiology**

(A) Bacterial levels assayed by taxon-specific qPCR of the 16S rRNA gene in non-Smurf flies at 10, 20, and 45 days of age.  $n = 6$  replicates of five dissected intestines.

(B) Bacterial levels assayed by qPCR of 16S with universal primers in antibiotic-treated and untreated non-Smurf flies at 10, 20, 30, and 40 days of age.  $n = 6$  replicates of five dissected intestines.

(C–H) Representative images (C) and analysis (D–H) of fecal output over a 48-hr period from untreated (AB–) and antibiotic-treated (AB+) non-Smurf flies at 20 and 40 days of age. Shown are mean number (D), mean area (E), mean circularity (F), mean lightness (G), and mean hue (H) of deposits. Arrows indicate a representative fecal deposit.  $n = 10$  replicate groups of ten flies.

(I) Food consumption as measured by the CAFÉ assay in untreated (AB–) and antibiotic-treated (AB+) non-Smurf flies at 20 and 40 days of age.  $n = 10$  replicate groups of ten flies. All are in  $w^{1118}$  females. Antibiotic treatment (AB–/+) was from 10 days of age. Boxplots display the first and third quartile, with the horizontal bar at the median and whiskers showing the most extreme data point, which is no more than 1.5 times the interquartile range from the box. \* $p < 0.05$ ; \*\* $p < 0.01$ ; \*\*\* $p < 0.001$ ; Wilcoxon test.

testinal bacterial levels lower than that found in the 10-day-old gut (Figure 2B).

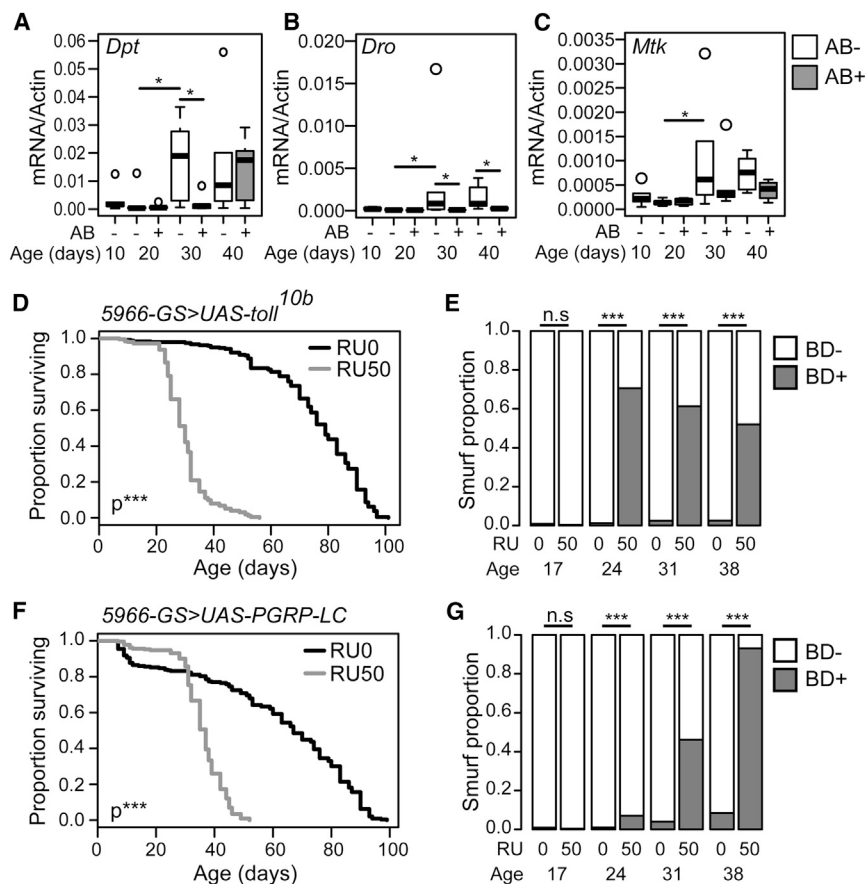
Representative images of the fecal output from 20-day-old untreated, 40-day untreated, and 40-day antibiotic-treated non-Smurf flies are shown in Figure 2C. Aged non-Smurf flies showed a significant increase in the number of fecal deposits (Figure 2D), significant changes in the size and shape of deposits (Figures 2E and 2F), and significantly increased lightness (a measure of water content; Figure 2G) and hue (a measure of pH; Figure 2H) when compared to young controls. Antibiotic treatment from day 10 of adulthood significantly reduced or even prevented these changes (Figures 2D–2H), suggesting that age-related dysbiosis plays a significant role in age-related changes in intestinal/excretory function

To address whether dysbiosis that occurs prior to barrier dysfunction is associated with alterations in other aspects of intestinal function, we utilized a non-invasive method to monitor a number of aspects of *Drosophila* intestinal and excretory physiology through analysis of the graphical features of fecal output in dye-fed flies (Cognigni et al., 2011; Wayland et al., 2014). In order to identify the impact of age-related dysbiosis on the fecal readouts, we utilized a previously published antibiotic cocktail (Brummel et al., 2004) to prevent intestinal bacterial growth from 10 days of adulthood. This antibiotic treatment was effective in preventing bacterial growth and resulted in in-

prior to barrier failure. Antibiotic treatment from day 10 had no significant impact on fecal output at 20 days of age (Figures 2D–2H), and neither the introduction of antibiotics into the food nor aging had a detectable effect on food intake, as assayed by the CAFÉ assay (Figure 2I) (Ja et al., 2007).

### Intestinal Immune Activation Induces Intestinal Barrier Dysfunction and Shortens Lifespan

A number of studies have reported increased immune activation in the intestines of aged flies dependent upon the presence of commensal microbes (Buchon et al., 2009; Guo et al., 2014; Ren



**Figure 3. Intestinal Immune Activation Shortens Life and Induces Intestinal Barrier Dysfunction**

(A–C) Antimicrobial peptide gene expression as assayed at 10-day intervals by qPCR from dissected intestines of untreated (AB–) or antibiotic-treated (AB+) *w<sup>1118</sup>* female non-Smurfs. Antibiotic feeding was from 10 days of age. *n* = 6 replicates of five intestines. *Dpt*, Diptericin (A); *Dro*, Drosocin (B); *Mtk*, Metchnikowin (C).

(D–G) Lifespan curves (D and F) and Smurf proportions (E and G) in *UAS-Toll<sup>10b</sup>/5966-Geneswitch* (D and E) and *UAS-PGRP-LC/5966-Geneswitch* (F and G) female flies drug induced from day 10 of adulthood (RU50) and uninduced controls (RU0). *n* = >200 flies/condition. BD–, non-Smurf; BD+, Smurf. Boxplots display the first and third quartile, with the horizontal bar at the median and whiskers showing the most extreme data point, which is no more than 1.5 times the interquartile range from the box. \**p* < 0.05; \*\**p* < 0.01; \*\*\**p* < 0.001. Log rank test for survival data was used in (D) and (F), binomial test for Smurf proportions was used in (E) and (G), Wilcoxon test was used for other data.

when compared to uninduced controls (Figures 3D–3G, S3C, and S3D).

### Both the Early-Life Microbiota and Age-Related Dysbiosis Influence Lifespan and Age-Onset Barrier Failure

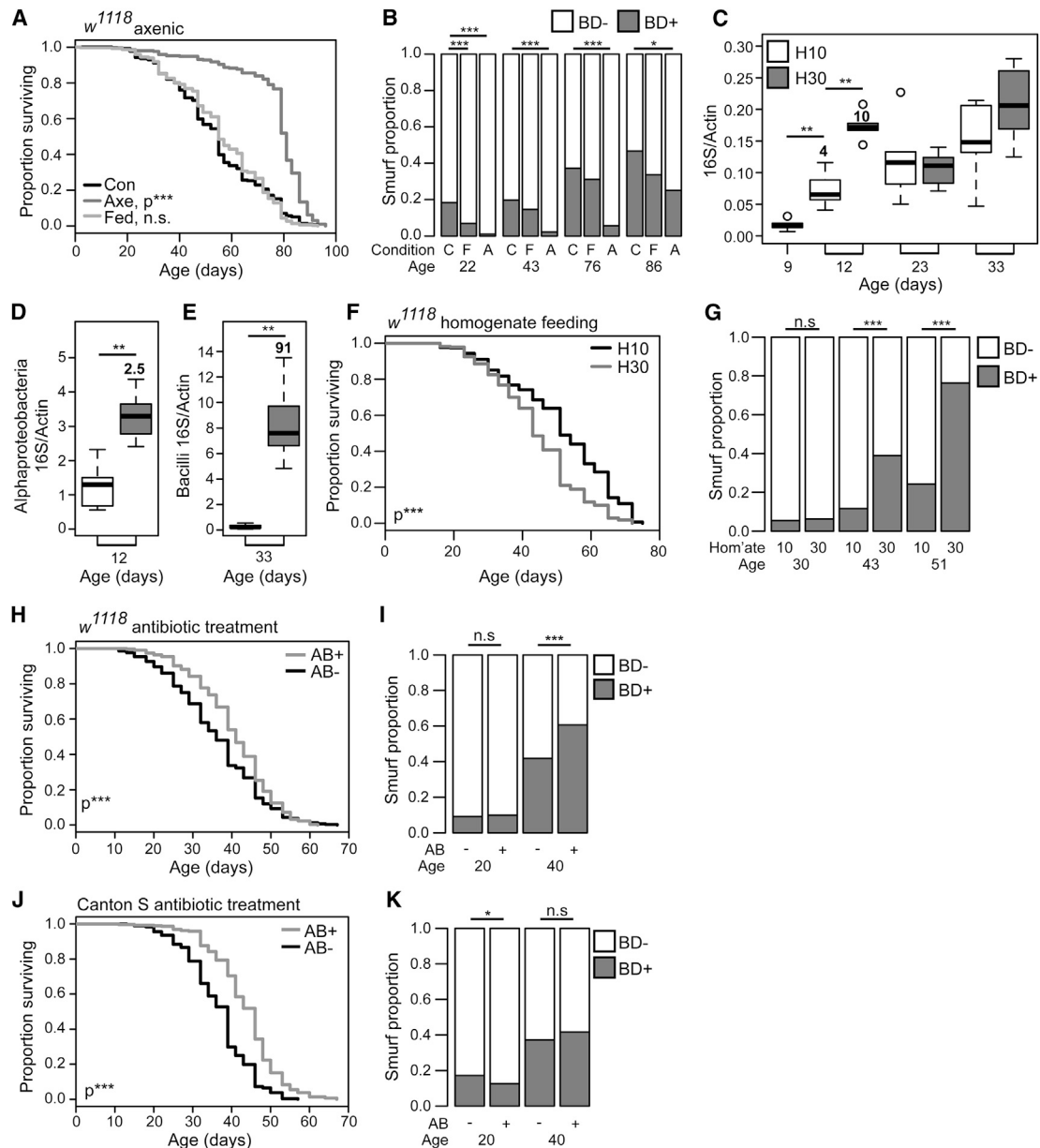
To better understand the relationships between the intestinal microbiota, age-

onset intestinal immune activation, and age-onset intestinal barrier failure. Quantitative PCR from dissected intestinal samples of non-Smurf flies identified a number of antimicrobial peptides (AMPs) that showed increased expression from a mid-life time point (Figures 3A–3C). Notably, neither *Drosomycin*, a reporter of Toll pathway activity, or *Dual Oxidase (Duox)*, an NADPH oxidase responsible for generating microbicidal reactive oxygen species in response to infection, showed increased expression in aged non-Smurf intestines (Figures S3A and S3B). In order to confirm the impact of age-related dysbiosis on intestinal immune activation, we again utilized antibiotic feeding to prevent intestinal bacterial growth from day 10 of adulthood. Quantitative PCR for AMP expression showed that antibiotic treatment from day 10 of adulthood was effective in reducing, or delaying, immune activation in the intestinal epithelium with age (Figures 3A–3C).

Our data support a model whereby dysbiosis leads to age-onset intestinal immune activation prior to intestinal barrier failure. Therefore, we assessed the impact of immune activation on intestinal barrier function by genetically inducing immune activation in the intestinal epithelium from day 10 of adulthood. Overexpression of either a constitutively active Toll receptor (Toll10b) or the IMD pathway receptor PGRP-LC using a GeneSwitch driver that is expressed in enteroblasts and post-mitotic enterocytes (ECs) (5966GS; Mathur et al., 2010) resulted in increased Smurf proportions and a greatly shortened lifespan,

onset intestinal barrier dysfunction, and organismal aging, we generated axenic flies. Axenic *w<sup>1118</sup>* females showed an increase in lifespan compared to those that were conventionally reared and those that were initially axenic but were re-associated with microbes by introducing fly homogenate to embryos (Figure 4A). These animals also showed a very low incidence of intestinal barrier dysfunction that was maintained until the final 10 days of life (Figure 4B). Similar findings were seen in Canton S females (Figures S4A and S4B). Culturing methods were used to follow the bacterial loads in these animals and confirmed their axenic status (Figures S4C and S4D). Consistent with a recent study using antibiotic treatment throughout life (Petkau et al., 2014), these data indicate that the presence of gut microbes influences the onset of intestinal barrier failure during aging.

To further assess the impact of the microbiota on intestinal barrier function and lifespan, we fed homogenate from 30-day-old non-Smurf *w<sup>1118</sup>* females to 9-day-old animals. Three days of homogenate feeding resulted in a transient increase in total 16S levels compared to controls that were fed homogenate from 10-day-old animals (Figure 4C). Taxa-specific 16S qPCR at this early time point showed significantly increased Alphaproteobacteria levels (Figure 4D), a small non-significant increase in Bacilli levels, and no increase in Gammaproteobacteria (Figures S4E and S4F). At later time points, no significant difference was found in Alpha- or Gammaproteobacteria levels; however, flies

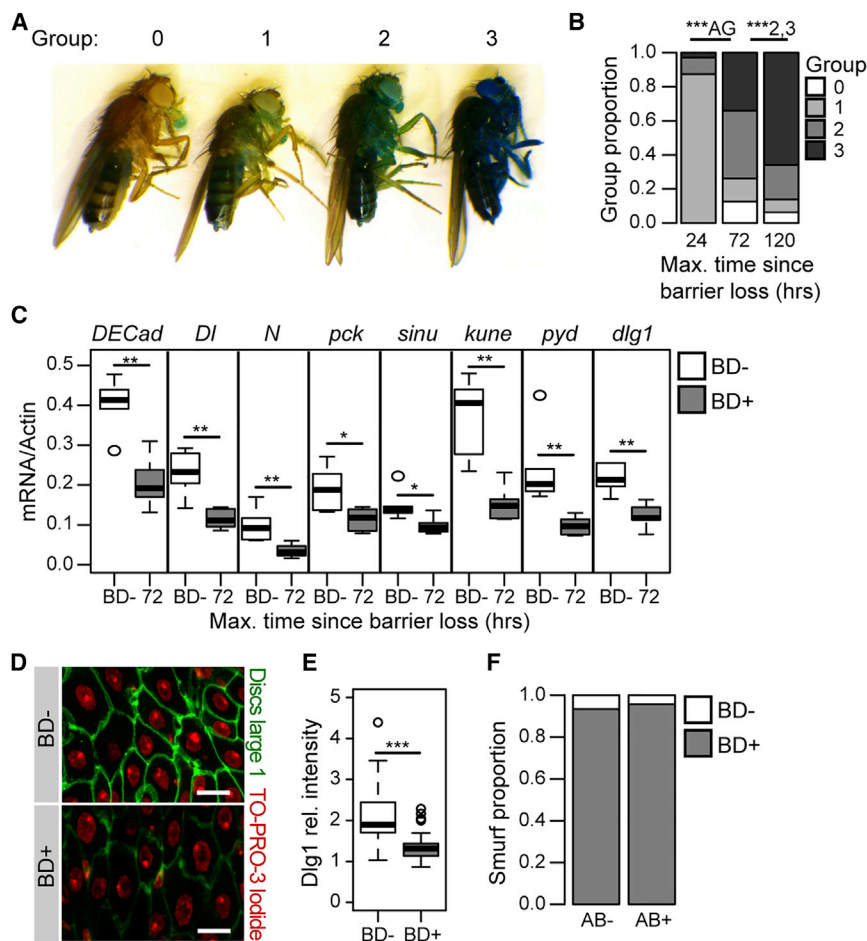


**Figure 4. The Early-Life Microbiota Modulates Lifespan and Age-Onset Intestinal Barrier Function**

(A and B) Lifespan curve (A) and Smurf proportions (B) of *w*<sup>1118</sup> female flies conventionally reared, axenically reared, and axenically treated and exposed to fly homogenate as embryos. *n* = >250 flies/condition. A, axenic; C, conventional; F, homogenate fed. *p* values are compared to conventionally reared. (C–G) *w*<sup>1118</sup> females fed, at the 10-day time point, homogenate from 10-day-old or 30-day-old flies. (C–E) Bacterial levels assayed by 16S qPCR at multiple time points with universal primers (C), at 12 days of age with Alphaproteobacteria primers (D), and at 33 days of age with Bacilli primers (E). *n* = 6 replicates of five surface-sterilized whole flies. Numbers in bold above each box give the fold change in the median relative to the relevant control. (F and G) Lifespan curve (F) and Smurf proportions (G) are shown. *n* = >200 flies/condition. (H and I) Lifespan curve (H) and Smurf proportions (I) of antibiotic-treated and untreated *w*<sup>1118</sup> female flies. *n* = >200 flies/condition. (J and K) Lifespan curve (J) and Smurf proportions (K) of antibiotic-treated Canton S female flies and untreated controls. Antibiotic feeding was from 10 days of age. Boxplots display the first and third quartile, with the horizontal bar at the median and whiskers showing the most extreme data point, which is no more than 1.5 times the interquartile range from the box. \**p* < 0.05; \*\**p* < 0.01; \*\*\**p* < 0.001. Log rank test for survival data was used in (A), (F), (H), and (J). Binomial test for Smurf proportions was used in (B), (G), (I), and (K). Wilcoxon test was used for other data.

fed the 30-day homogenate between days 9 and 12 showed significantly increased Bacilli levels at day 33 (Figures 4E, S4G, and S4H). Flies that were fed aged-fly homogenate also

significantly decreased lifespan (Figure 4F) and increased incidence in intestinal barrier dysfunction (Figure 4G) compared to flies fed homogenate from young animals.



**Figure 5. Age-Onset Intestinal Barrier Dysfunction Is Progressive and Associated with Altered Levels of Cell Junction Components**

(A) Images of Smurf flies, representing the color classes defined to reflect different amounts of blue dye in the hemolymph.

(B) The proportion of Smurf flies in each color class following 24 hr on the blue food, at 24 hr, 72 hr, and 5 days post-Smurf.  $n = >100$  flies/time point.  $p$  values are given relative to the previous time point. The relevant groups are given for each  $p$  value; AG, all groups.

(C) Junction protein gene expression assayed by qPCR from dissected intestines of non-Smurf (BD-) and 72-hr post-Smurf (BD+).  $n = 6$  replicates of five intestines. *DECad*, *Drosophila E-Cadherin*; *DI*, *Delta*; *dlg1*, *discs large 1*; *kune*, *kune-kune*; *N*, *Notch*; *pck*, *pickle*; *pyd*, *polychaetoid*; *sinu*, *sinuous*.

(D and E) Representative images (D) and quantification (E) of anti-dlg staining from the posterior midgut of BD- and 5-day post-BD+ (red channel, TO-PRO-3 DNA stain; green channel, anti-dlg; scale bar represents 10  $\mu$ m).  $n > 20$  confocal stacks from posterior midgut/condition; one fly per replicate stack.

(F) Smurf proportions in antibiotic-treated and untreated 5-day post-Smurf flies.  $n = >100$  flies/condition. All are in 30- to 35-day-old  $w^{1118}$  female flies. Antibiotic treatment was from 24-hr post-Smurf. BD-, non-Smurf; BD+, Smurf. Boxplots display the first and third quartile, with the horizontal bar at the median and whiskers showing the most extreme data point, which is no more than 1.5 times the interquartile range from the box. \* $p < 0.05$ ; \*\* $p < 0.01$ ; \*\*\* $p < 0.001$ ; binomial test for Smurf proportions; Wilcoxon test for other data.

Finally, we set out to determine whether preventing age-onset dysbiosis in adult flies can affect the onset of intestinal barrier failure. To do so, we again utilized antibiotic feeding to prevent intestinal bacterial growth from day 10 of adulthood. This antibiotic treatment significantly increased the lifespan of  $w^{1118}$  female flies (Figure 4H), regardless of the adult age at which treatment was started (Figure S4I). However, this antibiotic treatment did not reduce the incidence of barrier dysfunction in  $w^{1118}$  females (Figure 4I). Antibiotic treatment of Canton-S females during adulthood also resulted in significant lifespan extension, with the strongest affect when treatment was started from day 10 of adulthood (Figures 4J and S4J). In Canton-S, this treatment resulted in a small but significant reduction in Smurf proportion at 20 days of age (Figure 4K). Taken together, these data indicate that, whereas preventing intestinal bacterial growth from day 10 of adulthood can prolong lifespan in different laboratory strains, this treatment does not consistently delay the onset of intestinal barrier failure. As axenic flies show a delay in the onset of intestinal barrier dysfunction, one interpretation of our findings is that the presence of gut microbes during development and/or early adult life contributes to age-onset intestinal barrier dysfunction.

### Loss of Intestinal Barrier Function Is Progressive and Associated with Altered Expression of Cell Junction Components

In our previous studies (Rera et al., 2011, 2012), we assessed the Smurf phenotype in a binary fashion: barrier dysfunction negative or barrier dysfunction positive. Here, we assessed the progression of intestinal barrier dysfunction in barrier-dysfunction-positive flies. In order to quantify the severity of the phenotype, we identified a number of color classes reflecting the amount of blue dye present in the hemolymph (Figure 5A). The vast majority of flies that were identified as having lost barrier function within a 24-hr time window were within the lightest color class (Figure 5B) and, when removed from the blue food, readily cleared the dye. On re-exposure to the blue dye for a second 24 hr, these flies showed a significant increase in the level of blue in the hemolymph, and at 5 days post-Smurf, the majority of individuals were assigned to the darkest color class (Figure 5B). This is consistent with an increase in the severity of intestinal permeability and/or a decrease in the efficiency of clearance mechanisms. Animals that were scored in the darkest color class showed high mortality in the subsequent 24 hr, indicating that this level of blue dye in the hemolymph may be toxic (Figure S5A). Similarly, newly Smurf flies that were kept on the blue food



showed an accumulation of dye in the hemolymph and a greatly shortened lifespan compared to newly Smurf flies that were removed from the blue dye (Figure S5A). This demonstrates the importance of identifying animals that have lost barrier function within a short time window to limit hemolymph levels of the dye.

The intestinal barrier is maintained at the level of the cell junctions, consisting of adherens junctions and septate junctions, the invertebrate analog of the tight junction. We next assessed the expression levels of genes encoding protein components of these junctions in the intestinal epithelium in flies showing barrier loss. Flies collected within 8 hr of barrier dysfunction showed a deregulation of junction protein gene expression in the form of high levels of variability in expression levels when compared to controls (Figure S5B). However, by 72 hr following barrier dysfunction, cell junction transcripts showed a significant decrease in expression (Figure 5C). We confirmed this result at the protein level through antibody staining to Discs-Large 1 (*dlg1*) in dissected intestines of 5-day post-Smurf flies and in non-Smurf controls. Antibody staining of the posterior midgut clearly demonstrated a loss of *dlg1* protein in flies showing barrier failure (Figures 5D and 5E). To examine the impact of post-Smurf dysbiosis on intestinal barrier dysfunction, we again utilized antibiotic feeding to prevent bacterial growth. Antibiotic treatment within 24 hr of barrier dysfunction significantly reduced bacterial loads and prevented further bacterial growth (Figure S5C). However, at 5 days post-Smurf, flies that had received antibiotic treatment for a 4-day period still showed barrier dysfunction (Figure 5F), and antibiotic treatment had no effect on the expression levels of junction protein gene transcripts (Figure S5D). Taken together, these data suggest that a reduction in expression of cell junction proteins may contribute to the progressive worsening of intestinal barrier loss following an as yet unidentified initiating event. This transcriptional reprogramming of the intestinal epithelium may also contribute to the apparently irreversible nature of age-onset barrier dysfunction.

### Dysbiosis that Follows Age-Onset Intestinal Barrier Dysfunction Induces Systemic Immune Activation and Is a Primary Cause of Mortality

Having established the progressive nature of the Smurf phenotype, we next assayed the activity of immune and tissue renewal pathways in post-Smurf intestinal epithelia. Immune activation, assayed by qPCR of AMP expression levels, was apparent in dissected intestines collected from 30-day-old animals within 8 hr of barrier loss. All AMPs assayed showed a significant increase in transcript levels at this time point (Figure 6A). With the exception of *Drosomycin* (*Drs*), an AMP regulated primarily by the Toll pathway, AMP levels were maintained at 72 hr post-Smurf (Figure 6A). *Dual Oxidase* also showed a highly variable peak in expression at 8 hr post-Smurf (Figure 6A). Increased levels of reactive oxygen species in the gut have been linked to the induction of epithelial renewal in response to infection and the commensal microbiota, via activation of the JAK-STAT pathway (Buchon et al., 2009). We therefore assayed expression levels of the JAK-STAT cytokine *unpaired 3* (*upd3*) and target gene *Socs36E* in post-Smurf intestines. Both *upd3* and *Socs36E* showed a transient peak in expression 24 hr following the loss of barrier function (Figure 6B). These data

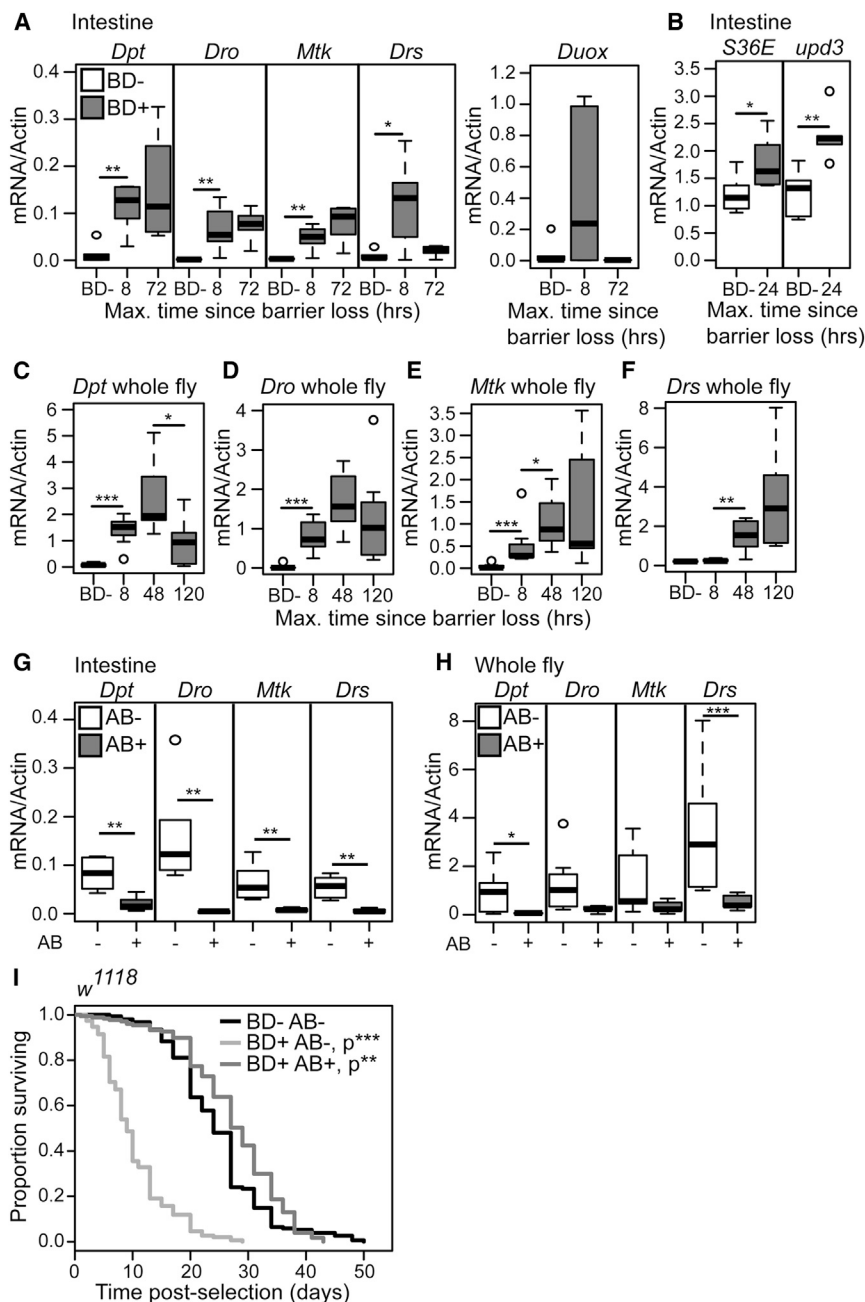
demonstrate a transient induction of epithelial renewal pathways and extended activation of immune signals in the post-Smurf intestinal epithelium.

Previously, we reported that non-Smurf individuals do not show whole-body increases in immunity gene expression during aging (Rera et al., 2012), suggesting that age-related systemic immune activation is dependent upon barrier dysfunction. In order to clarify the relationship between intestinal barrier loss and systemic immune activation, we assessed AMP expression levels in whole-fly samples during a time course following barrier loss. Significantly increased systemic levels of AMP expression were apparent within 8 hr of barrier failure in all AMPs assayed except *Drs* (Figures 6C–6F). *Drs* expression was significantly increased from 48 hr following barrier dysfunction (Figure 6F), a time point that correlates with the initiation of substantial post-Smurf bacterial growth. In order to assess the impact of post-Smurf immune activation on lifespan, we genetically induced immune activation in the intestine and fatbody of adult female flies. Overexpression of either a constitutively active Toll receptor (*Toll10b*) or the IMD pathway receptor *PGRP-LC* with the drug-inducible driver *S106-Geneswitch*, which is expressed in gut/fat body (Poirier et al., 2008), resulted in a dose-dependent decrease in lifespan (Figures S6A–S6C).

Following this result, we again utilized antibiotic feeding, in 30-day-old animals showing barrier dysfunction, to prevent post-Smurf dysbiosis. Flies treated with antibiotics within 24 hr of barrier loss showed significantly decreased AMP expression levels at a 5 day post-Smurf time-point, both in the intestinal epithelium and systemically (Figures 6G and 6H), demonstrating that immune activation in the gut and in the fatbody is microbe-dependent. To better understand the systemic consequences of post-barrier dysfunction dysbiosis, we examined lifespan in antibiotic-treated and untreated animals showing intestinal barrier dysfunction. Importantly, antibiotic treatment within 24 hr of barrier dysfunction resulted in a striking increase in Smurf lifespan, essentially restoring lifespan to that of non-Smurf animals (Figure 6I). Transient antibiotic treatment between 24 and 72 hr post-Smurf was also sufficient to significantly extend Smurf lifespan (Figure S6D). Taken together, these data demonstrate that post-Smurf dysbiosis is a primary factor in the death of animals that have lost barrier function. Our data also demonstrate that intestinal barrier dysfunction alone does not cause death.

## DISCUSSION

There is an emerging understanding of the importance of the gut microbiota in host longevity (Heintz and Mair, 2014), yet fundamental questions about microbiota dynamics and the pathophysiology of aging remain unanswered. In the present study, we have used the fruit fly, *Drosophila*, as a model to study the relationships between microbiota dynamics, the physiological decline of the aging intestine, and the ultimate manifestation of the aging process—the death of the animal. To do so, we used a number of non-invasive approaches to assay intestinal function and microbiota dynamics during aging. Studying the physiological decline of individual flies, as opposed to a population of chronologically age-matched animals of variable and unknown health, has allowed us to identify distinct shifts in



**Figure 6. Preventing Dysbiosis Post-intestinal Barrier Dysfunction Restores Lifespan**

(A and B) Gene expression assayed by qPCR from dissected intestines of non-Smurfs (BD-) and at multiple time points post-Smurf (BD+). n = 6 replicates of five intestines.

(C–F) Gene expression assayed by qPCR from whole BD- and 8, 48, and 120 hr post-BD+ flies. n = 6 replicates of three whole flies.

(G and H) Antimicrobial peptide gene expression assayed by qPCR from dissected intestines (G) or whole fly (H) of antibiotic-treated and untreated 5-day post-BD+ flies. n = 6 replicates of five intestines or three whole flies.

(I) Survival curves of antibiotic-treated and untreated 24-hr post-BD+ flies and age-matched untreated BD- controls. n = >200 flies/condition. p values are compared to BD- controls. *Dpt*, *Diptericin*; *Dro*, *Drosocin*; *Drs*, *Drosomylin*; *Duox*, *Dual Oxidase*; *Mtk*, *Metchnikowin*; *Socs36E*, *Suppressor of cytokine signaling at 36E*; *upd3*, *unpaired 3*. All flies were scored BD- or BD+ between 30 and 35 days old. All are in  $w^{1118}$  female flies. Antibiotic treatment from 24 hr post-BD+. Boxplots display the first and third quartile, with the horizontal bar at the median and whiskers showing the most extreme data point, which is no more than 1.5 times the interquartile range from the box. \*p < 0.05; \*\*p < 0.01; \*\*\*p < 0.001; log rank test for survival data in (I); Wilcoxon test for other data.

that age-onset dysbiosis promotes the functional decline of the aging intestine and limits lifespan.

Our metagenomics analysis identified distinct shifts in microbial community structure that are in broad agreement with the microbial changes associated with both intestinal inflammatory disorders and aging in the human gastrointestinal tract. Increased proportions of Proteobacteria versus Firmicutes are a signature of both inflammatory bowel disease and human aging (Cheng et al., 2013; Clemente et al., 2012). Increased Proteobacteria levels have also been correlated with inflammation in seniors (Biagi et al., 2010), and increased Enterobacteriaceae levels have been correlated

microbiota composition that are linked to specific pathophysiological events in the aging host organism. Previously, we demonstrated that, regardless of chronological age, intestinal barrier dysfunction is a harbinger of age-onset mortality (Rera et al., 2012). Here, we show that alterations in the microbiota precede and predict the onset of intestinal barrier dysfunction in aged flies and contribute to age-related changes in excretory function. Furthermore, a distinct shift in microbiota composition follows intestinal barrier failure and is a primary cause of organismal death. Taken together, our findings show that microbiota composition is predictive of varying rates of health decline in aging flies and

with frailty in the elderly (van Tongeren et al., 2005) and with inflammation in a genetic mouse model of colitis (Carvalho et al., 2012). The family Enterobacteriaceae is the most-abundant member of the Gammaproteobacteria represented in our samples. At the same time, intestinal barrier dysfunction is tightly linked to health status and is a common feature of inflammatory and metabolic disorders in mammals (Marchiando et al., 2010). The epithelial barrier is an essential component of the immune system and is essential for immune tolerance (Turner, 2009). Translocation of commensal bacteria, or bacterial products, across the intestinal epithelium has been linked to sepsis

following chronic or severe illness (Deitch, 2012; Dillon et al., 2014; Estes et al., 2010) and to the development of systemic metabolic disorders (Amar et al., 2011; Raybould, 2012). These similarities suggest that a set of fundamental principles may underlie intestinal functional decline from *Drosophila* to humans. In this regard, a pressing challenge will be to determine whether distinct shifts in microbiota composition, linked to age-onset intestinal barrier dysfunction, precede age-related health decline in other organisms. Should this prove to be the case then microbiota sampling would provide an accessible way to monitor health status and predict future health outcomes in aging mammals.

Our work adds to previous *Drosophila* studies suggesting that increases in microbial load may be an important feature of age-onset dysbiosis (Broderick et al., 2014; Buchon et al., 2009; Guo et al., 2014; Ren et al., 2007). A breakdown of immune regulation in the aged epithelium (Guo et al., 2014), an expansion in the niche available for bacterial growth, or changes in the nutrient environment that supports bacterial growth may all contribute to increased bacterial levels. In any case, we show that the excessive bacterial growth and/or the concomitant immune activation following intestinal barrier failure promote organismal death. Previous reports of the impact of axenic culture on fly lifespan have been inconsistent; indeed, axenic flies have been reported to display shortened lifespan (Brummel et al., 2004), increased lifespan (Petkau et al., 2014), and normal lifespan (Ren et al., 2007). We find that germ-free flies are long lived, consistent with studies reporting that axenic flies show improved markers of intestinal homeostasis during aging (Broderick et al., 2014; Buchon et al., 2009; Guo et al., 2014) and the growing body of evidence indicating that intestinal homeostasis is a critical determinant of fly lifespan (Rera et al., 2013; Wang et al., 2014). Inconsistent reports of the impact of bacterial exposure on fly lifespan extend to the impact of single bacterial species, with the *Drosophila* endosymbiont *Wolbachia* having been reported to have a positive (Alexandrov et al., 2007; Ikeya et al., 2009), negative (Min and Benzer, 1997), or neutral impact on lifespan (Ikeya et al., 2009), dependent on the strain of *Wolbachia* and the genotype of the host. Whereas the *w<sup>1118</sup>* female flies used in this study contain *Wolbachia*, given the low representation of *Wolbachia* sequences in our metagenomic data and the absence of an increase in *Wolbachia* abundance following intestinal barrier dysfunction, it is unlikely that the presence of *Wolbachia* alone can explain our results. However, these issues highlight the complexity of the host-microbe interaction and its impact on host lifespan. Beneficial contributions of microbes to fly health seem to be highly dependent on nutrient conditions—we recently demonstrated that gut-associated microbes promote amino acid harvest to rescue lifespan during undernutrition (Yamada et al., 2015). Hence, it is possible that the presence of gut-associated microbes can be beneficial or deleterious to host lifespan, depending on the nutrient environment. Another intriguing possibility is that different laboratory strains display different alterations in microbiota dynamics during aging and, hence, respond differently to axenic culture.

In this study, we have been able to follow the dynamics of the microbiota population throughout the lifespan and with the changing health status of the aging host. The interactions between the microbial species that make up the commensal

population, and between the microbial population as a whole and the host organism, result in a highly complex network of interrelated signals. Therefore, establishing the cause and effect relationships between microbial dynamics and a given phenotype is a significant challenge for this research field. Whereas a single study cannot hope to address this complexity, our ability to establish the timing of changes in the microbial population relative to changes in intestinal physiology and health status represents a significant step in that direction. As *Drosophila* is one of the most-important model organisms in aging research, our findings will facilitate a better understanding of the mechanisms by which life-extending manipulations impact pathophysiology and/or microbiota dynamics to improve organismal survival. In addition, our work opens the door to using *Drosophila* to identify anti-aging interventions that can be differentially applied, depending upon the health status of the aged animal.

## EXPERIMENTAL PROCEDURES

### Timed Smurf Assays

The Smurf assay was conducted as previously described (Rera et al., 2012) on 30-day-old *w<sup>1118</sup>* female flies. Smurf animals were then removed under light nitrogen anesthesia to generate a large population of non-Smurf individuals. New Smurfs were collected within 8 or 24 hr of the prior population clearance and removed from the blue dye. The same number of non-Smurf controls was simultaneously collected from each vial. For later post-Smurf time points, Smurfs collected within the 24-hr window were allowed to age under standard culture conditions prior to sample collection at the specified time point. The reported effects of husbandry practices on *Drosophila* bacterial loads (Blum et al., 2013) were controlled for by keeping bacterial sample collection consistent relative to new food transfer and by the collection of non-Smurf controls from the same vials as Smurf individuals.

### Sequencing and Analysis

Indexed paired end libraries were generated from genomic DNA extractions of dissected intestines using Nextera XT DNA sample preparation kit and Nextera XT Index kit (Illumina), with 1 ng of starting material and following the manufacturers' protocol, but with an extended fragmentation time of 8 min. Concentration-normalized libraries were then pooled and sequenced on Illumina HiSeq2000 with TruSeq Dual Index Sequencing Primer Kit, Single Read (Illumina). The quality of the sequence data set was confirmed using fastQC software (Babraham Bioinformatics). Over 10,000,000 reads from each sample were then searched against a 2014 version of the NCBI non-redundant database (nr) using RAPSearch version 2.18 (Zhao et al., 2012), limiting output to 50 matches per query. RAPSearch results were imported to MEGAN5 (Huson et al., 2011) for taxonomic analysis. Further details for all experimental procedures are available in the Supplemental Information.

### ACCESSION NUMBERS

The accession number for the sequencing data reported in this paper is SRA: SRP061446.

### SUPPLEMENTAL INFORMATION

Supplemental Information includes Supplemental Experimental Procedures, six figures, and one table and can be found with this article online at <http://dx.doi.org/10.1016/j.celrep.2015.08.004>.

### ACKNOWLEDGMENTS

We thank H. Jasper, L. Jones, L. Seroude, M. Dionne, and the *Drosophila* Stock Center (Bloomington) for fly stocks and the L. Jones, M. Frye, and D. Simmons labs for use of their equipment. This work was supported by the

UCLA Institute of Genomics and Proteomics (to M.P. and S.F.-G.) and the NIH (R01GM095656 to M.M.; R24GM092473 to S.F.-G.; R00AG030493 and R01AG045036 to W.W.J.; and R01AG037514, R01AG049157, and R01AG040288 to D.W.W.). Stocks obtained from the Bloomington Drosophila Stock Center (NIH P40OD018537) were used in this study.

Received: April 20, 2015

Revised: July 14, 2015

Accepted: July 31, 2015

Published: August 27, 2015

## REFERENCES

- Alexandrov, I.D., Aleksandrova, M.V., Goriacheva, I.I., Roshchina, N.V., Shaikovich, E., and Zakharov-Gezekhus, I.A. (2007). Removing endosymbiotic *Wolbachia* specifically decreases lifespan of females and competitiveness in a laboratory strain of *Drosophila melanogaster*. *Genetika* 43, 1372–1378.
- Amar, J., Chabo, C., Waget, A., Klopp, P., Vachoux, C., Bermúdez-Humarán, L.G., Smirnova, N., Bergé, M., Sulpice, T., Lahtinen, S., et al. (2011). Intestinal mucosal adherence and translocation of commensal bacteria at the early onset of type 2 diabetes: molecular mechanisms and probiotic treatment. *EMBO Mol. Med.* 3, 559–572.
- Biagi, E., Nylund, L., Candela, M., Ostan, R., Bucci, L., Pini, E., Nikkila, J., Monti, D., Satokari, R., Franceschi, C., et al. (2010). Through ageing, and beyond: gut microbiota and inflammatory status in seniors and centenarians. *PLoS ONE* 5, e10667.
- Biteau, B., Hochmuth, C.E., and Jasper, H. (2008). JNK activity in somatic stem cells causes loss of tissue homeostasis in the aging *Drosophila* gut. *Cell Stem Cell* 3, 442–455.
- Biteau, B., Karpac, J., Supoyo, S., Degennaro, M., Lehmann, R., and Jasper, H. (2010). Lifespan extension by preserving proliferative homeostasis in *Drosophila*. *PLoS Genet.* 6, e1001159.
- Blum, J.E., Fischer, C.N., Miles, J., and Handelsman, J. (2013). Frequent replenishment sustains the beneficial microbiome of *Drosophila melanogaster*. *MBio* 4, e00860–e00813.
- Blumberg, R., and Powrie, F. (2012). Microbiota, disease, and back to health: a metastable journey. *Sci. Transl. Med.* 4, 137rv137.
- Broderick, N.A., and Lemaitre, B. (2012). Gut-associated microbes of *Drosophila melanogaster*. *Gut Microbes* 3, 307–321.
- Broderick, N.A., Buchon, N., and Lemaitre, B. (2014). Microbiota-induced changes in *Drosophila melanogaster* host gene expression and gut morphology. *MBio* 5, e01117–e01114.
- Brummel, T., Ching, A., Seroude, L., Simon, A.F., and Benzer, S. (2004). *Drosophila* lifespan enhancement by exogenous bacteria. *Proc. Natl. Acad. Sci. USA* 101, 12974–12979.
- Buchon, N., Broderick, N.A., Chakrabarti, S., and Lemaitre, B. (2009). Invasive and indigenous microbiota impact intestinal stem cell activity through multiple pathways in *Drosophila*. *Genes Dev.* 23, 2333–2344.
- Carding, S., Verbeke, K., Vipond, D.T., Corfe, B.M., and Owen, L.J. (2015). Dysbiosis of the gut microbiota in disease. *Microb. Ecol. Health Dis.* 26, 26191.
- Carvalho, F.A., Koren, O., Goodrich, J.K., Johansson, M.E., Nalbantoglu, I., Aitken, J.D., Su, Y., Chassaing, B., Walters, W.A., González, A., et al. (2012). Transient inability to manage proteobacteria promotes chronic gut inflammation in TLR5-deficient mice. *Cell Host Microbe* 12, 139–152.
- Cheng, J., Palva, A.M., de Vos, W.M., and Satokari, R. (2013). Contribution of the intestinal microbiota to human health: from birth to 100 years of age. *Curr. Top. Microbiol. Immunol.* 358, 323–346.
- Choi, N.H., Kim, J.G., Yang, D.J., Kim, Y.S., and Yoo, M.A. (2008). Age-related changes in *Drosophila* midgut are associated with PVF2, a PDGF/VEGF-like growth factor. *Aging Cell* 7, 318–334.
- Claesson, M.J., Cusack, S., O'Sullivan, O., Greene-Diniz, R., de Weerd, H., Flannery, E., Marchesi, J.R., Falush, D., Dinan, T., Fitzgerald, G., et al. (2011). Composition, variability, and temporal stability of the intestinal microbiota of the elderly. *Proc. Natl. Acad. Sci. USA* 108 (Suppl 1), 4586–4591.
- Claesson, M.J., Jeffery, I.B., Conde, S., Power, S.E., O'Connor, E.M., Cusack, S., Harris, H.M., Coakley, M., Lakshminarayanan, B., O'Sullivan, O., et al. (2012). Gut microbiota composition correlates with diet and health in the elderly. *Nature* 488, 178–184.
- Clemente, J.C., Ursell, L.K., Parfrey, L.W., and Knight, R. (2012). The impact of the gut microbiota on human health: an integrative view. *Cell* 148, 1258–1270.
- Cognigni, P., Bailey, A.P., and Miguel-Aliaga, I. (2011). Enteric neurons and systemic signals couple nutritional and reproductive status with intestinal homeostasis. *Cell Metab.* 13, 92–104.
- Deitch, E.A. (2012). Gut-origin sepsis: evolution of a concept. *Surgeon* 10, 350–356.
- Dillon, S.M., Lee, E.J., Kotter, C.V., Austin, G.L., Dong, Z., Hecht, D.K., Giannela, S., Siewe, B., Smith, D.M., Landay, A.L., et al. (2014). An altered intestinal mucosal microbiome in HIV-1 infection is associated with mucosal and systemic immune activation and endotoxemia. *Mucosal Immunol.* 7, 983–994.
- Erkosar, B., Storelli, G., Defaye, A., and Leulier, F. (2013). Host-intestinal microbiota mutualism: “learning on the fly”. *Cell Host Microbe* 13, 8–14.
- Estes, J.D., Harris, L.D., Klatt, N.R., Tabb, B., Pittaluga, S., Paiardini, M., Barclay, G.R., Smedley, J., Pung, R., Oliveira, K.M., et al. (2010). Damaged intestinal epithelial integrity linked to microbial translocation in pathogenic simian immunodeficiency virus infections. *PLoS Pathog.* 6, e1001052.
- Guo, L., Karpac, J., Tran, S.L., and Jasper, H. (2014). PGRP-SC2 promotes gut immune homeostasis to limit commensal dysbiosis and extend lifespan. *Cell* 156, 109–122.
- Heintz, C., and Mair, W. (2014). You are what you host: microbiome modulation of the aging process. *Cell* 156, 408–411.
- Hur, J.H., Bahadorani, S., Graniel, J., Koehler, C.L., Ulgherait, M., Rera, M., Jones, D.L., and Walker, D.W. (2013). Increased longevity mediated by yeast NDI1 expression in *Drosophila* intestinal stem and progenitor cells. *Aging* 5, 662–681.
- Huson, D.H., Auch, A.F., Qi, J., and Schuster, S.C. (2007). MEGAN analysis of metagenomic data. *Genome Res.* 17, 377–386.
- Huson, D.H., Mitra, S., Ruscheweyh, H.J., Weber, N., and Schuster, S.C. (2011). Integrative analysis of environmental sequences using MEGAN4. *Genome Res.* 21, 1552–1560.
- Ikeya, T., Broughton, S., Alic, N., Grandison, R., and Partridge, L. (2009). The endosymbiont *Wolbachia* increases insulin/IGF-like signalling in *Drosophila*. *Proc. Biol. Sci.* 276, 3799–3807.
- Ja, W.W., Carvalho, G.B., Mak, E.M., de la Rosa, N.N., Fang, A.Y., Liong, J.C., Brummel, T., and Benzer, S. (2007). Prandiology of *Drosophila* and the CAFE assay. *Proc. Natl. Acad. Sci. USA* 104, 8253–8256.
- Khan, M.T., Nieuwdorp, M., and Bäckhed, F. (2014). Microbial modulation of insulin sensitivity. *Cell Metab.* 20, 753–760.
- Kirkwood, T.B., Feder, M., Finch, C.E., Franceschi, C., Globerson, A., Klingenberg, C.P., LaMarco, K., Omholt, S., and Westendorp, R.G. (2005). What accounts for the wide variation in life span of genetically identical organisms reared in a constant environment? *Mech. Ageing Dev.* 126, 439–443.
- Marchiando, A.M., Graham, W.V., and Turner, J.R. (2010). Epithelial barriers in homeostasis and disease. *Annu. Rev. Pathol.* 5, 119–144.
- Mathur, D., Bost, A., Driver, I., and Ohlstein, B. (2010). A transient niche regulates the specification of *Drosophila* intestinal stem cells. *Science* 327, 210–213.
- Min, K.T., and Benzer, S. (1997). *Wolbachia*, normally a symbiont of *Drosophila*, can be virulent, causing degeneration and early death. *Proc. Natl. Acad. Sci. USA* 94, 10792–10796.
- Nicholson, J.K., Holmes, E., Kinross, J., Burcelin, R., Gibson, G., Jia, W., and Pettersson, S. (2012). Host-gut microbiota metabolic interactions. *Science* 336, 1262–1267.
- Park, J.S., Kim, Y.S., and Yoo, M.A. (2009). The role of p38b MAPK in age-related modulation of intestinal stem cell proliferation and differentiation in *Drosophila*. *Aging* 1, 637–651.



- Petkau, K., Parsons, B.D., Duggal, A., and Foley, E. (2014). A deregulated intestinal cell cycle program disrupts tissue homeostasis without affecting longevity in *Drosophila*. *J. Biol. Chem.* **289**, 28719–28729.
- Poirier, L., Shane, A., Zheng, J., and Seroude, L. (2008). Characterization of the *Drosophila* gene-switch system in aging studies: a cautionary tale. *Aging Cell* **7**, 758–770.
- Raybould, H.E. (2012). Gut microbiota, epithelial function and derangements in obesity. *J. Physiol.* **590**, 441–446.
- Ren, C., Webster, P., Finkel, S.E., and Tower, J. (2007). Increased internal and external bacterial load during *Drosophila* aging without life-span trade-off. *Cell Metab.* **6**, 144–152.
- Rera, M., Bahadorani, S., Cho, J., Koehler, C.L., Ulgherait, M., Hur, J.H., Ansari, W.S., Lo, T., Jones, D.L., and Walker, D.W. (2011). Modulation of longevity and tissue homeostasis by the *Drosophila* PGC-1 homolog. *Cell Metab.* **14**, 623–634.
- Rera, M., Clark, R.I., and Walker, D.W. (2012). Intestinal barrier dysfunction links metabolic and inflammatory markers of aging to death in *Drosophila*. *Proc. Natl. Acad. Sci. USA* **109**, 21528–21533.
- Rera, M., Azizi, M.J., and Walker, D.W. (2013). Organ-specific mediation of life-span extension: More than a gut feeling? *Ageing Res. Rev.* **12**, 436–444.
- Ryu, J.H., Kim, S.H., Lee, H.Y., Bai, J.Y., Nam, Y.D., Bae, J.W., Lee, D.G., Shin, S.C., Ha, E.M., and Lee, W.J. (2008). Innate immune homeostasis by the ho-meobox gene caudal and commensal-gut mutualism in *Drosophila*. *Science* **319**, 777–782.
- Turner, J.R. (2009). Intestinal mucosal barrier function in health and disease. *Nat. Rev. Immunol.* **9**, 799–809.
- van Tongeren, S.P., Slaets, J.P., Harmsen, H.J., and Welling, G.W. (2005). Fecal microbiota composition and frailty. *Appl. Environ. Microbiol.* **71**, 6438–6442.
- Wang, L., Karpac, J., and Jasper, H. (2014). Promoting longevity by maintaining metabolic and proliferative homeostasis. *J. Exp. Biol.* **217**, 109–118.
- Wayland, M.T., Defaye, A., Rocha, J., Jayaram, S.A., Royet, J., Miguel-Aliaga, I., Leulier, F., and Cognigni, P. (2014). Spotting the differences: Probing host/microbiota interactions with a dedicated software tool for the analysis of faecal outputs in *Drosophila*. *J. Insect Physiol.* **69**, 126–135.
- Wong, C.N., Ng, P., and Douglas, A.E. (2011). Low-diversity bacterial community in the gut of the fruitfly *Drosophila melanogaster*. *Environ. Microbiol.* **13**, 1889–1900.
- Yamada, R., Deshpande, S.A., Bruce, K.D., Mak, E.M., and Ja, W.W. (2015). Microbes promote amino acid harvest to rescue undernutrition in *Drosophila*. *Cell Rep.* **10**, 865–872.
- Zhao, Y., Tang, H., and Ye, Y. (2012). RAPSearch2: a fast and memory-efficient protein similarity search tool for next-generation sequencing data. *Bioinformatics* **28**, 125–126.