

**PHYLOGENETIC RELATIONSHIPS OF THE EXTINCT ST. HELENA  
PETREL, *PTERODROMA RUPINARUM* OLSON (PROCELLARIIFORMES:  
PROCELLARIIDAE), BASED ON ANCIENT DNA**

Andreanna J Welch<sup>1,\*</sup>, Storrs L. Olson<sup>2</sup>, Robert C. Fleischer<sup>3</sup>

<sup>1</sup>Department of Biological Sciences, University at Buffalo, Buffalo, NY, USA

<sup>2</sup>Department of Vertebrate Zoology, National Museum of Natural History, Smithsonian Institution, Washington, DC, USA

<sup>3</sup>Smithsonian Conservation Biology Institute, Center for Conservation and Evolutionary Genetics, National Zoological Park, Washington, DC, USA

\*Current affiliations: School of Biological and Biomedical Sciences, Durham University; Institute of Marine Sciences, University of California, Santa Cruz, CA, USA

**Corresponding Author:** Andreanna J. Welch; School of Biological and Biomedical Sciences, Durham University, South Road, Durham, DH1 3LE, UK; andreanna05@gmail.com

**ABSTRACT**

Paleontological studies show that three endemic procellariid seabird species became extinct on the remote island of St. Helena in the South Atlantic Ocean. At least one of these, *Pterodroma rupinarum*, likely survived until human colonization of the island, although it is known only from subfossil bones. Several species of *Pterodroma* are distributed across the Atlantic, but the skull and bill of *Pt. rupinarum* were judged to be more similar to the Indo-Pacific *Pterodroma rostrata* group, which was recently split into the separate genus *Pseudobulweria*. We used ancient DNA techniques to sequence the mitochondrial *Cytochrome b* gene of the extinct *Pterodroma rupinarum* and conducted phylogenetic analyses to investigate the placement of this enigmatic taxon. In trees constructed using maximum likelihood and Bayesian inference *Pterodroma rupinarum* did not group with *Pseudobulweria* but instead fell within a strongly supported clade of Atlantic *Pterodroma*, including the endangered Black-capped (*Pt. hasitata*) and Bermuda (*Pt. cahow*) petrels, as well as the Macaronesian petrels (*Pt. madeira*, *Pt. deserta*, and *Pt. feae*). *Pt. rupinarum* shared a particularly close relationship to *Pt. feae* of the Cape Verde Islands, which is also the geographically closest species within the clade. Considering the osteological distinctiveness of *Pt. rupinarum* it was likely a separate species, or at least a highly diverged population that was isolated for a substantial period of time prior to its extinction.

**ADDITIONAL KEYWORDS:** Cytochrome b – extinction – petrel – phylogeny – *Pseudobulweria* – *Pterodroma* – St. Helena

## INTRODUCTION

Seabirds are highly vagile and may forage widely over the open oceans, traveling hundreds to thousands of kilometers on a single foraging trip during the breeding season (Brooke, 2004). Their ability to disperse widely over expansive pelagic ecosystems makes them a useful indicator of marine conditions (Piatt, Sydeman & Wiese, 2007; Wiley *et al.*, 2013), and as top marine predators they play ecologically important roles (Croll *et al.*, 2005; Sánchez-Piñero & Polis, 2000). Unfortunately, seabirds are one of the most endangered groups of birds in the world (Croxall *et al.*, 2012). The family Procellariidae contains approximately 80 species of petrels and shearwaters, though the taxonomy of this group is challenging and often disputed (Brooke, 2004; Penhallurick & Wink, 2004; Rheindt & Austin, 2005). The Procellariidae ranks as the third most endangered seabird family (Croxall *et al.*, 2012) and many of these species face substantial threats both at the breeding grounds as well as at sea (Barbraud *et al.*, 2012; Fontaine, Gimenez & Bried, 2011; Lewison & Crowder, 2003; Wanless *et al.*, 2007; Weimerskirch, Brothers & Jouventin, 1997). Despite this, investigation of the fossil record indicates that in the recent past seabird extinction has been relatively rare, especially when compared to the extinction rate of terrestrial species on oceanic islands (Steadman, 1995; Steadman, 2006).

Fossils from Saint Helena, a remote island in the South Atlantic Ocean (Figure 1), showed that three apparently endemic species of Procellariidae became extinct there, and populations of three other procellariids, along with several additional species of seabirds were extirpated (Olson, 1975). Of the three extinct species only one, *Puffinus pacificoides* (Olson, 1975), is likely to have disappeared prior to human arrival, probably during the Pleistocene. Another species, *Bulweria bifax* (Olson, 1975), was much more abundant in Pleistocene than in recent deposits and may have been decreasing in number towards modern times. The third species, *Pterodroma rupinarum* (Olson, 1975), was fairly common in the most recent deposits and may have become extinct after discovery of the island in 1502 by Portuguese sailors (Olson, 1975). Little is known about the avifauna of St. Helena at the time of human colonization, as there appear to be no written accounts from that period. However, after permanent settlement in 1513 there are numerous accounts of large numbers of feral invasive species, including goats, pigs, rats, mice, and cats (Gosse, 1938), which would presumably have caused severe environmental perturbation and led to greatly increased predation on burrow-nesting seabirds.

Initial work by Bourne (1956) on the taxonomic identification of a limited number of *Pterodroma* bones from St. Helena ruled out affinity to *Pt. arminjoniana* (Giglioli & Salvadori, 1869), the only other tropical South Atlantic petrel (Figure 1). Instead, he suggested that the fossils might belong to Macaronesian species of *Pterodroma* breeding on Madeira and the Cape Verde Islands in the North Atlantic. Recent genetic work on the Macaronesian petrels suggests the existence of three recently diverged species: *Pt. feae* (Salvadori, 1899) in the Cape Verde archipelago, *Pt. deserta* on Bugio Island (first suggested as a distinct species by Bourne in 1955), and *Pt. madeira* (Mathews 1934) on the island of Madeira in the Madeira Archipelago (Figure 1), although the species status of *Pt. deserta* is still somewhat controversial (Gangloff *et al.*, 2013; Jesus *et al.*, 2009; Zino, Brown & Biscoito, 2008). Bourne (1965) later suggested that the fossil *Pterodroma* from St. Helena might belong with the *Pterodroma rostrata* group instead. Examination of greatly expanded material collected by Olson (1975) resulted in the naming of the fossils as a new species, *Pterodroma rupinarum*, some characters of which, particularly the

skull and the angle of the bill, were considered to be more similar to the *Pterodroma rostrata* group than to other *Pterodroma* petrels. Genetic work (Bretagnolle, Attié & Pasquet, 1998) has since shown that the *Pterodroma rostrata* group actually represents a distinct genus, *Pseudobulweria*, first proposed by Mathews in 1936 (type species *Thalassidroma (Bulweria) macgillivrayi* G.R.Gray, 1859). The Indo-Pacific genus *Pseudobulweria* contains four extant species, *Ps. rostrata* (Peale, 1848), *Ps. becki* (Murphy 1928), *Ps. aterrima* (Bonaparte, 1857), and *Ps. macgillivrayi* (Gray, 1860). These are among the most endangered of procellariiforms, with three out of four of the species considered critically endangered, being known only from a handful of museum specimens, and often having been feared extinct for many years (Attié, Stahl & Bretagnolle, 1997; Gangloff *et al.*, 2012; Shirihai, 2008; Shirihai *et al.*, 2009).

Here, we report on ancient DNA sequences from the extinct *Pterodroma rupinarum* and assess the placement of this species in a phylogeny including nearly all *Pterodroma* and *Pseudobulweria* petrels.

## METHODS

### SAMPLES AND MOLECULAR TECHNIQUES

Of the thousands of available bones of *Pterodroma rupinarum* collected by Olson in 1971, ten were selected from 3 sites on St. Helena: 8 from Prosperous Bay (USNM 176607, 176608, 176610, 176613, 176615, 176623, 176627, 176641), 1 from Sandy Bay (USNM 176679), and 1 from Sugarloaf Hill, Site 2 (USNM 176702). Bones that were clearly identifiable as *Pt. rupinarum* were selected based on size, thickness of bone walls, and un-weathered appearance. A mixture of complete and partial elements was selected to minimize the effects of destructive sampling. The age of the samples is not certainly known but all of the deposits are thought to be late Holocene. A small piece of bone (approximately 4 mm x 6 mm) was cut from each specimen using a rotary saw with disposable blades. Each sample was ground into powder using a mortar and pestle and DNA was extracted using a phenol/chloroform procedure with centrifugal dialysis (Fleischer *et al.*, 2000). All laboratory work was conducted in a physically isolated facility dedicated for ancient DNA work and strict protocols were followed to prevent contamination from modern sources. Ancient DNA was extracted in batches of six samples, each of which included an extraction control.

Most phylogenetic work on procellariiform seabirds has focused on the mitochondrial *Cytochrome b* gene (Austin, Bretagnolle & Pasquet, 2004; Bretagnolle *et al.*, 1998; Gangloff *et al.*, 2012; Nunn & Stanley, 1998), so we targeted that gene for our study. Polymerase chain reaction (PCR) was carried out as in Welch (2012). Briefly, PCR was conducted in 25 uL reaction volumes with 1 unit Amplitaq Gold DNA polymerase (Applied Biosystems), 2 – 3 uL DNA extract, and with a total of 45 cycles. We utilized a series of short (120 – 200 bp), overlapping PCR primers designed specifically to amplify in *Pterodroma* (Welch *et al.*, 2012), in *Pseudobulweria* and *Bulweria* (Table 1), and in all Procellariiformes (Pyle, Welch & Fleischer, 2011). Negative controls were used to detect potential contamination. All amplifications were conducted a minimum of two times for each primer/sample combination. PCR products were cleaned using ExoSAP-IT (USB), cycle-sequenced in both directions with Big Dye Terminator

v3.1 (Applied Biosystems), then purified using Sephadex G-50 fine columns (GE Healthcare Bio-Sciences) and electrophoresed in an ABI 3130 xL Genetic Analyzer (Applied Biosystems). Sequences were visually inspected and edited in Sequencher v. 4.9.

## DATA ANALYSIS

In addition to the data we obtained for *Pterodroma rupinarum* we downloaded representative DNA sequences from the GenBank database for procellariid taxa (Table 2), selecting sequences from all species of *Pseudobulweria* and nearly all species of *Pterodroma* (see Results). Here we consider the three Macaronesian taxa of *Pterodroma* from the North Atlantic as distinct species. Only partial sequences were available for the enigmatic *Ps. aterrima*, *Ps. becki*, and *Ps. macgillivrayi*, so in those cases multiple sequences were included. We also included multiple sequences for taxa of interest that breed in several different locations (e.g. *Pseudobulweria rostrata* and *Pterodroma arminjoniana*). Diving petrels of the genus *Pelecanoides* were used to root the tree (Nunn & Stanley, 1998). The *Cytochrome b* gene is relatively well-conserved in Procellariiformes, and sequences were aligned in Sequencher and then manually adjusted by eye. To detect the presence of nuclear copies, or NUMTs (Sorenson & Fleischer, 1996), in our dataset the sequences were characterized and translated in MacClade v. 4.08 (Maddison & Maddison, 2008). The program jModelTest v. 0.1.1 (Posada, 2008) and the Akaike information criterion (AIC) were used to select the best-fitting substitution model. The GTR + I + G model was selected for the full data set as well as for datasets composed of the nucleotides in first and third codon positions, and the GTR + I model was selected for the dataset composed of nucleotides in the second codon position. The transition/transversion bias was estimated using maximum likelihood in MEGA5 (Nei & Kumar, 2000; Tamura *et al.*, 2011). Calculations of pairwise sequence divergence using the best fit substitution model were conducted in PAUP\* (Swofford, 2002) and MEGA5.

We constructed phylogenetic trees using maximum likelihood and Bayesian inference. For both methods we first constructed trees using the full dataset and then performed the analysis again, partitioning the data by codon position. Maximum likelihood analyses were conducted with the RAXML BlackBox webserver (Stamatakis, Hoover & Rougemont, 2008) and branch support was estimated through 1000 bootstrap replicates. Bayesian inference was conducted using MrBayes 3.1.2 (Altekar *et al.*, 2004; Ronquist & Huelsenbeck, 2003). For the codon-partitioned analyses, some parameters of the GTR substitution matrix in the partition for the first codon position had particularly low effective sample size (ESS) compared to the others (e.g. some types of transversions were rare in the data set), leading to poor mixing overall; therefore, the HKY + I + G model was implemented instead. Default priors were used and all parameters except for branch lengths and topology were unlinked. We used the default heating scheme with one cold and three heated chains. Runs were conducted for 10 million generations with the first 10% discarded as burn-in. We conducted multiple independent analyses with different, randomly generated starting seeds. We examined plots of  $-\ln L$  across generations and assessed the ESS for each parameter (which was  $> 500$  in all cases) in Tracer v1.5 (Drummond *et al.*, 2012). To test whether the codon partitioned model fit the data better than the unpartitioned model, we conducted a likelihood ratio test for maximum likelihood analyses, and estimated Bayes Factors (BF) in Tracer for Bayesian analyses (Suchard, Weiss & Sinsheimer, 2001).

We investigated the divergence time of *Pterodroma rupinarum* using a strict molecular clock gene tree analysis in BEAST v. 1.7.4 (Drummond *et al.*, 2012). The analysis was performed using the unpartitioned dataset with the GTR + I + G substitution model, empirical base frequencies, and a random starting tree. We utilized the Yule tree prior with other priors set at their default values. The substitution rate for the *Cytochrome b* gene was set to 1.89% per million years, as estimated for procellariiform seabirds using fossil and biogeographic calibrations (Weir & Schluter, 2008). Multiple independent analyses with randomly generated starting seeds were conducted for 50 million generations with the first 10% discarded as burn-in. As above, plots of  $-\ln L$  across generation and ESS were examined in Tracer v1.5.

## RESULTS

DNA sequences were obtained from two samples: 194 bp from one sample from Prosperous Bay (USNM176607) and 786 contiguous bp from the sample from Sandy Bay (USNM 176679). The sequence from Prosperous Bay fully overlapped with the sequence from Sandy Bay and was identical. After alignment, the total sequence length for *Pterodroma rupinarum* was 949 bp. This sequence has been deposited in the GenBank database under accession number KF010837. The full alignment of comparative sequences was 1143 bp and contained 76 taxa, with an average sequence length of 1045 bp. No gaps or premature stop codons were detected. There were 478 variable sites with 21%, 6%, and 73% occurring in the first, second, and third codon position, respectively. After translation, 14% of the substitutions resulted in nonsynonymous changes. The nucleotide frequencies were A = 28.15%, T = 26.34%, C = 32.91%, and G = 12.60%, and the transition/transversion bias was estimated to be 9.42. This pattern of variation suggests that these sequences are likely of mitochondrial, and not nuclear, origin. Additionally, independent amplification of multiple overlapping fragments for *Pterodroma rupinarum* did not uncover any ambiguous sequences, which provides additional evidence for mitochondrial origin of those sequences.

Maximum likelihood and Bayesian inference produced congruent topologies with *Pterodroma rupinarum* placed within a clade of *Pterodroma* petrels from the Atlantic with high support. For both methods of analysis there was strong support for the codon-partitioned model over the unpartitioned model (LRT = 1254,  $p < 0.001$ ;  $\log_{10}BF = 238$ ), although both models also produced congruent topologies. Overall, the topology recovered here is generally in agreement with other molecular analyses of Procellariidae (Figure 2) (Austin *et al.*, 2004; Gangloff *et al.*, 2012; Jesus *et al.*, 2009; Nunn & Stanley, 1998; Penhallurick & Wink, 2004). In general the *Cytochrome b* gene provides poor resolution for deeper nodes beyond the level of genus. The branch leading to *Pseudobulweria* received strong support (posterior probability, PP, of 1.0 and bootstrap support, BS, of 99). Within *Pseudobulweria*, relationships were largely unresolved, and further analyses are particularly needed to determine subspecific relationships and taxonomic status within the Tahiti petrel (*Pseudobulweria rostrata*) (Gangloff *et al.*, 2012). Support was also strong for the branch leading to *Pterodroma* (PP 1.0, BS 100). Within *Pterodroma*, deeper relationships were unresolved, but some strongly supported clades were detected as well.

In the phylogenies, *Pterodroma rupinarum* did not group with *Pseudobulweria* but instead fell within a strongly supported Atlantic clade of *Pterodroma* (Figure 2) that includes *Pt. hasitata* (Kuhl, 1820), *Pt. cahow* (Nichols & Mowbray, 1916), and the Macaronesian petrels, *Pt. madeira*, *Pt. deserta*, and *Pt. feae* (PP 1.0, BS 98). Within this clade *Pt. rupinarum* was most closely related to *Pt. feae* (PP 0.99, BS 91), which breeds in the Cape Verde Islands, the most southerly of the Macaronesian islands and geographically closest to St. Helena. Divergence time estimates from the strict molecular clock gene tree analysis suggest that *Pterodroma rupinarum* diverged from *Pterodroma feae* approximately 260,000 years ago (95% highest posterior density 126,000 to 418,000 years ago). Pairwise genetic distance (Table 3) between *Pterodroma rupinarum* and *Pt. feae* was 1.10%, and between *Pterodroma rupinarum* and the next closest taxon, *Pt. deserta*, was 1.83%, while distances to species of *Pseudobulweria* were much larger, ranging from 12.2 to 14.6%, averaging approximately 13%. Calculation of genetic distances can be influenced by missing data (Fregin *et al.*, 2012), and therefore these distances may be slightly revised if longer sequences from *Pterodroma rupinarum* or the critically endangered *Pseudobulweria* petrels become available.

## DISCUSSION

### PHYLOGENETIC PLACEMENT

Phylogenetic analyses of the *Cytochrome b* sequence of the extinct *Pterodroma rupinarum* strongly support its placement in the genus *Pterodroma*. It groups within a clade of petrels distributed in the North Atlantic and is most closely related to the Macaronesian petrels, in particular *Pt. feae* of the Cape Verde islands. It is unlikely that the placement of *Pterodroma rupinarum* could result from contamination, postmortem DNA damage, or poor taxonomic sampling. Negative DNA extraction and PCR controls did not display evidence of contamination. Additionally, sequences of multiple, overlapping fragments from the same sample were identical, as were sequences obtained from two different individuals collected at different sites under different conditions of local preservation, suggesting minimal contamination or errors due to miscoding regions in the DNA. PCR amplification success was higher for shorter fragments, typical of ancient DNA. Taxonomic sampling is also not likely to be an issue. Using sequences available in the GenBank database all extant *Pseudobulweria* petrels were included in the phylogeny. One additional extinct taxon potentially belonging to that genus remains to be described (Gangloff *et al.*, 2012). *Cytochrome b* sequences > 600 bp were not available for seven Pacific taxa: *Pt. alba* (Gmelin, 1789), *Pt. atrata* (Mathews, 1912), *Pt. brevipes* (Peale, 1848), *Pt. cervicalis* (Salvin, 1891), *Pt. defilippiana* (Giglioli & Salvadori, 1869), *Pt. leucoptera* (Gould, 1844), and *Pt. pycrofti* (Falla, 1933), none of which are thought to belong in the same clade as the Atlantic taxa that grouped with *Pterodroma rupinarum*. No sequences were available for the extinct Jamaica petrel, *Pt. caribbaea* (Carte, 1866), which has sometimes been considered a subspecies of *Pt. hasitata* (see below).

Analyses relying strictly on mitochondrial DNA can be biased in some circumstances. In cases of hybridization, phylogenetic analysis of mitochondrial DNA will group hybrids with the maternal species. It is possible that the individuals of *Pt. rupinarum* we sequenced were the product of a *Pterodroma* x *Pseudobulweria* hybridization event, although this seems unlikely.

There is no evidence for the existence of another species of *Pterodroma* on St. Helena, and no species of *Pseudobulweria* are known from the Atlantic. Further, continental landmasses as well as non-physical barriers may reduce the frequency of dispersal of *Pseudobulweria* into the Atlantic (Friesen, Burg & McCoy, 2007; Steeves, Anderson & Friesen, 2005). Also, hybridization is thought to be rare in procellariid seabirds in general, with only a few reported cases in the family (Brown *et al.*, 2010; Hunter, 1982). Finally, it is unclear whether a hybridization event between such divergent species would produce viable offspring. Positive selection may also act on the mitochondrial genome (Bazin, Glémin & Galtier, 2006), which could potentially influence the results of phylogenetic analyses. Additional data from the nuclear genome would help to verify the findings presented here, but the results are consistent with the geographical distributions of other species of *Pterodroma* in the Atlantic. Therefore, biases related to hybridization and positive selection seem unlikely.

The present analysis indicates, with high support, that *Pterodroma rupinarum* belongs within a clade of *Pterodroma* petrels that are distributed around the North Atlantic. This group includes the endangered black-capped petrel (*Pt. hasitata*) of Hispaniola, Cuba, and Lesser Antilles, the vanished Jamaica petrel (*Pt. caribbaea*), which was once considered a subspecies of *Pt. hasitata* (Brooke, 2004) and last observed in the mid 19<sup>th</sup> century, the endangered Bermuda petrel (*Pt. cahow*), as well as the three species of Macaronesian petrels breeding in the eastern North Atlantic. The closest taxon to *Pt. rupinarum* appears to be *Pt. feae* of the Cape Verde Islands, with *Pt. deserta* of Bugio island in the Madeira archipelago being slightly more distant. The species status of *Pt. deserta* has been debated. There appears to be little or no gene flow with *Pt. feae*, but the two taxa have diverged only very recently, within the last 40,000 years (Gangloff *et al.*, 2013), and so the divergence process may not be complete. *Pseudobulweria* petrels breed in the Indian and Pacific Oceans, and given this wide distribution it may not have been surprising to find a member of the genus in the Atlantic. However, the phylogenetic placement of *Pterodroma rupinarum* within *Pterodroma* is consistent with a biogeographic scenario in which a closely-knit clade of petrel species radiated throughout the Atlantic and Caribbean, reaching as far south as St. Helena (Figure 1).

The phylogenetic placement of *Pterodroma rupinarum* may seem contradictory to earlier osteological analyses. The skull of this taxon was described as being similar to petrels of the genus *Pseudobulweria*, which have a marked downward slope of the bill as compared to *Pterodroma* petrels where the bill attaches to the skull in a horizontal manner (Olson, 1975). When these analyses were conducted nearly 40 years ago, no skeletons of *Pseudobulweria* were available and therefore comparisons were made between the three-dimensional fossils and X-radiographs taken of museum study skins. Similarly, there were very few skeletons of *Pterodroma* species in museum collections, and none of the Macaronesian species. This is slowly beginning to change. Now there are at least a good series of skeletons of several different populations of *Pseudobulweria rostrata*, and although very scarce and scattered in small and remote museums, there are also a few skeletons now available for the Macaronesian species of *Pterodroma*. Until proper comparisons of this new material can be made with the fossils of *Pt. rupinarum*, it remains unclear whether the apparently distinctive features of the skull and mandible are truly similar to, and presumably convergent on, *Pseudobulweria*, or whether such features may also occur in some or all of the Macaronesian species of *Pterodroma*. Likewise, we

are unable at this point to say how much the osteology of *Pt. rupinarum* is similar to or differs from its apparent closest relative, *Pt. feae* of the Cape Verde Islands.

## SPECIES STATUS

*Pterodroma rupinarum* shows a close relationship to *Pt. feae* and *Pt. deserta*, with an uncorrected pair-wise sequence divergence of 1.1 to 1.8%. Further work is needed to investigate genetic variation within these taxa, which may lead to revision of the estimated genetic distance in the future. However, a distance of 1.1% is within the normal range of pairwise *cytochrome b* sequence divergences for acknowledged full species of petrels . (Austin *et al.*, 2004; Techow, Ryan & O'Ryan, 2009). The lowest pairwise divergence between species in the data set analyzed here was 0.7%, which occurred between *Pachyptila desolata* (Gmelin, 1789) and *P. salvini* (Mathews 1912) and between *Puffinus creatopus* (Coues, 1984) and *P. carneipes* (Gould, 1844). Overall, a pairwise sequence divergence of 1.1% in addition to osteological differences, suggests that *Pterodroma rupinarum* is a distinct species from *Pt. feae*. At the very least it may represent a substantially differentiated population of *Pt. feae* that was isolated for a long period of time prior to its extinction, perhaps about a quarter of a million years, assuming an evolutionary rate for the *Cytochrome b* gene of 1.89% per million years (Weir & Schluter, 2008).

## EXTINCTION AND CONSERVATION OF PETRELS

Several species of procellariid seabirds have become extinct since humans colonized the islands where they breed, including *Puffinus spelaesus* (Holdaway & Worthy, 1994) and *Puffinus olsoni* (Rando & Alcover, 2008) in the Canary Islands, and *Puffinus parvus* (= *P. boydi*) (Olson, 2004) on Bermuda, as well as other species in the Pacific. In addition many bones have been found for which the taxonomic identity remains unclear and these may or may not represent undescribed species (Steadman, 2006). Further, many populations of extant species have been extirpated as well, and these could have represented distinct but unrecognized evolutionary units. It is interesting that two extinct species occur in the same clade of *Pterodroma*— *Pt. rupinarum* on St. Helena and *Pt. caribbaea* on Jamaica (although the extinction of the Jamaica petrel has not been confirmed). Which factors are consistently related to seabird extinctions, if any, remains unclear. Anthropogenic influences on these islands are similar to those of other oceanic islands where procellariid species have persisted. Gangloff *et al.* (2012) suggest that petrels that breed on gently sloping islands, as opposed to islands with steep, inaccessible cliffs, may be at increased risk for extinction. This may have been the case for *Pterodroma rupinarum* (Olson, 1975), however, *Pt. caribbaea* was known to breed on steep cliffs (Brooke, 2004). Another factor may be that *Pterodroma rupinarum* and *Pt. caribbaea* are both single island endemics, which have an increased risk of extinction due to restricted ranges, small population sizes, and lower genetic diversity (Frankham, 1997). Additionally, the characteristic philopatry of petrel species may mean that birds continually return to the same high mortality breeding sites year after year (Igual *et al.*, 2007). While at least one, and potentially two, instances of extinction have occurred in this clade, there is also at least one case of successful conservation restoration. *Pterodroma cahow* was thought extinct for over 200 years until a small population was rediscovered in the early 1900s. Through intensive management, population sizes have been steadily increasing and translocated birds have begun breeding in their new colonies (Birdlife\_International, 2013;



Carlile *et al.*, 2003; Gehrman, 2012). Therefore, while some extinctions have already occurred it may still be possible to prevent additional extinctions in the future.

## ACKNOWLEDGEMENTS

We would like to thank Helen James, Nancy Rotzel, and members of the Center for Conservation and Evolutionary Genetics at the Smithsonian Institution's National Zoological Park for helpful discussion and logistical support. Two reviewers provided useful comments that improved this article. We would like to thank Chris Milensky, Division of Birds, National Museum of Natural History, Smithsonian Institution, for access to samples and the Center for Computational Resources at the University at Buffalo for access to the high performance computer cluster. The Center for Conservation and Evolutionary Genetics and NSF-DEB0745604 provided funding for laboratory work.

## REFERENCES

- Altekar G, Dwarkadas S, Huelsenbeck JP, Ronquist F. 2004. Parallel metropolis coupled Markov chain Monte Carlo for Bayesian phylogenetic inference. *Bioinformatics* **20**: 407-415.
- Attié C, Stahl J-C, Bretagnolle V. 1997. New data on the endangered mascarene petrel *Pseudobulweria aterrima*: A third twentieth century specimen and distribution. *Colonial Waterbirds* **20**: 406-412.
- Austin JJ, Bretagnolle V, Pasquet E. 2004. A global molecular phylogeny of the small *Puffinus* shearwaters and implications for systematics of the Little-Audobon's shearwater complex. *Auk* **121**: 847-864.
- Barbraud C, Rolland V, Jenouvrier S, Nevoux M, Delord K, Weimerskirch H. 2012. Effects of climate change and fisheries bycatch on Southern Ocean seabirds: a review. *Marine ecology progress series* **454**: 285-307.
- Bazin E, Glémin S, Galtier N. 2006. Population size does not influence mitochondrial genetic diversity in animals. *Science* **312**: 570-572.
- Birdlife\_International. 2013. Species factsheet: *Pterodroma cahow*.
- Bourne WRP. 1955. The birds of the Cape Verde Islands. *Ibis* **97**: 508-556.
- Bourne WRP. 1956. Notes on a skull of the genus *Bulweria* from St. Helena. *Bulletin of the British Ornithologists' Club* **76**: 79-82.
- Bourne WRP. 1965. The missing petrels. *Bulletin of the British Ornithologists' Club* **85**: 97-105.
- Bretagnolle V, Attié C, Pasquet E. 1998. Cytochrome-B Evidence for validity and phylogenetic relationships of *Pseudobulweria* and *Bulweria* (Procellariidae). *Auk* **115**: 188-195.
- Brooke M. 2004. *Albatrosses and Petrels across the World*. Oxford University Press: Oxford.
- Brown RM, Nichols RA, Faulkes CG, Jones CG, Bugoni L, Tatayah V, Gottelli D, Jordan WC. 2010. Range expansion and hybridization in Round Island petrels (*Pterodroma* spp.): evidence from microsatellite genotypes. *Molecular Ecology* **19**: 3157-3170.

- Carlile N, Priddle D, Zino F, Natividad C, Wingate DB. 2003.** A review of four successful recovery programmes for threatened sub-tropical petrels. *Marine Ornithology* **31**: 185-192.
- Croll DA, Maron JL, Estes JA, Danner EM, Byrd GV. 2005.** Introduced predators transform subarctic islands from grassland to tundra. *Science* **307**: 1959-1961.
- Croxall JP, Butchart SHM, Lascelles B, Stattersfield AJ, Sullivan B, Symes A, Taylor P. 2012.** Seabird conservation status, threats and priority actions: a global assessment. *Bird Conservation International* **22**: 1-34.
- Drummond AJ, Suchard MA, Xie D, Rambaut A. 2012.** Bayesian phylogenetics with BEAUti and the BEAST 1.7. *Molecular Biology and Evolution* **29**: 1969-1973.
- Fleischer RC, Olson SL, James HF, Cooper AC. 2000.** Identification of the extinct Hawaiian Eagle (*Haliaeetus*) by mtDNA sequence analysis. *Auk* **117**: 1051-1056.
- Fontaine R, Gimenez O, Bried J. 2011.** The impact of introduced predators, light-induced mortality of fledglings and poaching on the dynamics of the Cory's shearwater (*Calonectris diomedea*) population from the Azores, northeastern subtropical Atlantic. *Biological Conservation* **144**: 1998-2011.
- Frankham R. 1997.** Do island populations have less genetic variation than mainland populations? *Heredity* **78**: 311-327.
- Fregin S, Haase M, Olsson U, Alström P. 2012.** Pitfalls in comparisons of genetic distances: A case study of the avian family Acrocephalidae. *Molecular Phylogenetics and Evolution* **62**: 319-328.
- Friesen VL, Burg TM, McCoy KD. 2007.** Mechanisms of population differentiation in seabirds. *Molecular Ecology* **16**: 1765-1785.
- Gangloff B, Shirihai H, Watling D, Cruaud C, Couloux A, Tillier A, Pasquet E, Bretagnolle V. 2012.** The complete phylogeny of *Pseudobulweria*, the most endangered seabird genus: systematics, species status and conservation implications. *Conservation Genetics* **13**: 39-52.
- Gangloff B, Zino F, Shirihai H, González-Solís J, Couloux A, Pasquet E, Bretagnolle V. 2013.** The evolution of north-east Atlantic gadfly petrels using statistical phylogeography. *Molecular Ecology* **22**: 495-507.
- Gehrman E. 2012.** *Rare birds: The extraordinary tale of the Bermuda petrel and the man who brought it back from extinction*. Beacon Press: Boston, MA.
- Gosse P. 1938.** *St. Helena, 1502-1938*. Cassell and Company: London.
- Holdaway RN, Worthy TH. 1994.** A new fossil species of shearwater *Puffinus* from the late quaternary of the South Island, New Zealand, and notes on the biogeography and evolution of the *Puffinus gavia* superspecies. *Emu* **94**: 201-215.
- Hunter S. 1982.** Inter-specific breeding in Giant petrels at South Georgia. *Emu* **82**: 608-614.
- Igual JM, Forero MG, Gomez T, Oro D. 2007.** Can an introduced predator trigger an evolutionary trap in a colonial seabird? *Biological Conservation* **137**: 189-196.
- Jesus J, Menezes D, Gomes S, Oliveira P, Nogales M, Brehm A. 2009.** Phylogenetic relationships of gadfly petrels *Pterodroma* spp. from the Northeastern Atlantic Ocean: molecular evidence for specific status of Bugio and Cape Verde petrels and implications for conservation. *Bird Conservation International* **19**: 199-214.
- Lewison RL, Crowder LB. 2003.** Estimating fishery bycatch and effects on a vulnerable seabird population. *Ecological Applications* **13**: 743-753.
- Maddison DR, Maddison WP. 2008.** MacClade v 4.08. Sunderland, MA: Sinauer Associations.

- Nei M, Kumar S. 2000.** *Molecular Evolution and Phylogenetics*. Oxford University Press: New York.
- Nunn GB, Stanley SE. 1998.** Body size effects and rates of cytochrome b evolution in tube-nosed seabirds. *Molecular Biology and Evolution* **15**: 1360-1371.
- Olson SL. 1975.** Paleornithology of St. Helena Island, South Atlantic Ocean. *Smithsonian Contributions to Paleobiology* **23**: 1-49. Available online at [http://www.sil.si.edu/smithsoniancontributions/paleobiology/pdf\\_lo/SCtP-0023.pdf](http://www.sil.si.edu/smithsoniancontributions/paleobiology/pdf_lo/SCtP-0023.pdf)
- Olson SL. 2004.** Taxonomic review of the fossil Procellariidae (Aves: Procellariiformes) described from Bermuda by R. W. Shufeldt. *Proceedings of the Biological Society of Washington* **117**: 575-581.
- Penhallurick J, Wink M. 2004.** Analysis of the taxonomy and nomenclature of the Procellariiformes based on complete nucleotide sequences of the mitochondrial cytochrome b gene. *Emu* **204**: 125-147.
- Piatt JF, Sydeman WJ, Wiese F. 2007.** Introduction: a modern role for seabirds as indicators. *Marine ecology progress series* **352**: 199-204.
- Posada D. 2008.** jModelTest: Phylogenetic model averaging. *Molecular Biology and Evolution* **25**: 1253-1256.
- Pyle P, Welch AJ, Fleischer RC. 2011.** A new species of shearwater (*Puffinus*) recorded from Midway Atoll, Northwestern Hawaiian Islands. *Condor* **113**: 518-527.
- Rando JC, Alcover JA. 2008.** Evidence for a second western Palaearctic seabird extinction during the last millenium: the Lava Shearwater. *Ibis* **150**: 188-192.
- Rheindt FE, Austin JJ. 2005.** Major analytical and conceptual shortcomings in a recent taxonomic revision of the Procellariiformes - a reply to Penhallurick and Wink (2004). *Emu* **105**: 181-186.
- Ronquist F, Huelsenbeck JP. 2003.** MrBayes 3: Bayesian phylogenetic inference under mixed models. *Bioinformatics* **19**: 1572-1574.
- Sánchez-Piñero F, Polis GA. 2000.** Bottom-up dynamics of allochthonous input: direct and indirect effects of seabirds on islands. *Ecology* **81**: 3117-3132.
- Shirihai H. 2008.** Rediscovery of Beck's petrel *Pseudobulweria becki*, and other observations of tubenoses from the Bismark archipelago, Papua New Guinea. *Bulletin of the British Ornithologists' Club* **128**: 3-16.
- Shirihai H, Pym T, Kretzschmar J, Moce K, Taukei A, Watling D. 2009.** First observations of Fiji Petrel *Pseudobulweria macgillivrayi* at sea: off Gau Island, Fiji, in May 2009. *Bulletin of the British Ornithologists' Club* **129**: 129-148.
- Sorenson MD, Fleischer RC. 1996.** Multiple independent transpositions of mitochondrial DNA control region sequences to the nucleus. *Proceedings of the National Academy of Sciences of the United States of America* **93**: 15239-15243.
- Stamatakis A, Hoover P, Rougemont J. 2008.** A rapid bootstrap algorithm for the RAxML web-servers. *Systematic Biology* **75**: 758-771.
- Steadman DW. 1995.** Island birds: Biodiversity meets zooarchaeology. *Science* **267**: 1123-1131.
- Steadman DW. 2006.** *Extinction and biogeography of tropical Pacific birds*. University of Chicago Press: Chicago.
- Steeves TE, Anderson DJ, Friesen VL. 2005.** The Isthmus of Panama: a major physical barrier to gene flow in a highly mobile pantropical seabird. *Journal of Evolutionary Biology* **18**: 1000-1008.

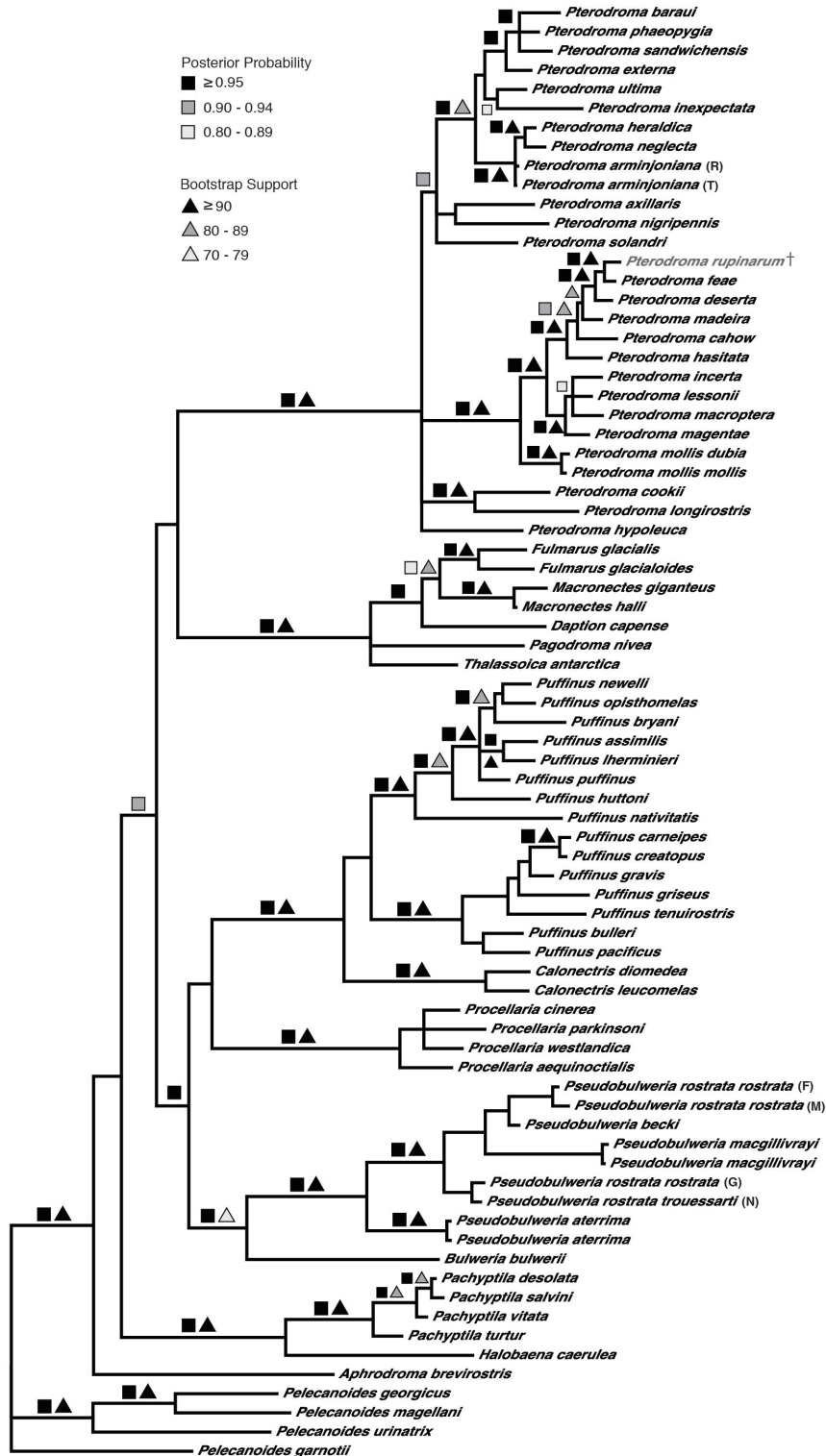
- Suchard MA, Weiss RE, Sinsheimer JS. 2001.** Bayesian selection of continuous-time markov chain evolutionary models. *Molecular Biology and Evolution* **18**: 1001-1013.
- Swofford DL. 2002.** PAUP\*. Phylogenetic analysis using parsimony (\*and other methods). Sunderland, Massachusetts: Sinauer Associates.
- Tamura K, Peterson D, Peterson N, Stecher G, Nei M, Kumar S. 2011.** MEGA5: Molecular evolutionary genetics analysis using maximum likelihood, evolutionary distance, and maximum parsimony methods. *Molecular Biology and Evolution* **28**: 2731-2739.
- Techow NMSM, Ryan PG, O'Ryan C. 2009.** Phylogeography and taxonomy of White-chinned and Spectacled Petrels. *Molecular Phylogenetics and Evolution* **52**: 25-33.
- Wanless RM, Angel A, Cuthbert RJ, Hilton GM, Ryan PG. 2007.** Can predation by invasive mice drive seabird extinctions? *Biology Letters* **3**: 241-244.
- Weimerskirch H, Brothers N, Jouventin P. 1997.** Population dynamics of wandering albatross *Diomedea exulans* and Amsterdam albatross *D. amsterdamensis* in the Indian Ocean and their relationships with long-line fisheries: Conservation implications. *Biological Conservation* **79**: 257-270.
- Weir JT, Schluter D. 2008.** Calibrating the avian molecular clock. *Molecular Ecology* **17**: 2321-2328.
- Welch AJ, Fleischer RC, James HF, Wiley AE, Ostrom PH, Adams J, Duvall F, Holmes N, Hu D, Penniman J, Swindle K. 2012.** Population divergence and gene flow in an endangered and highly mobile seabird. *Heredity* **109**: 19-28.
- Wiley AE, Ostrom PH, Welch AJ, Fleischer RC, Gandhi H, Southon J, Stafford TW, Jr., Penniman J, Hu D, Duvall F, James HF. 2013.** Millennial-scale records from a wide-ranging predator show evidence of recent human impact to oceanic food webs. *Proceedings of the National Academy of Sciences* **110**: 8972-8977.
- Zino F, Brown R, Biscoito M. 2008.** The separation of *Pterodroma madeira* (Zino's petrel) from *Pterodroma fea* (Fea's petrel) (Aves: Procellariidae). *Ibis* **150**: 326-334.

## FIGURES AND TABLES

**Figure 1.** Approximate recent breeding locations of *Pterodroma* petrels in the Atlantic Ocean.



**Figure 2.** Bayesian consensus tree of *Cytochrome b* sequences from 72 procellariid taxa and 4 *Pelecanoides* outgroups. Maximum likelihood analyses yielded a congruent topology. Bayesian posterior probability and maximum likelihood bootstrap support are shown along the branches. Sampling locations for *Pterodroma arminjoniana* and *Pseudobulweria rostrata* are as in Table 2.



**Table 1.** PCR primers developed from *Pseudobulweria* and *Bulweria* sequences that were used in this study, in addition to primers developed from sequences of other procellariiform taxa (Pyle *et al.*, 2011; Welch *et al.*, 2012).

Primer	Sequence (5'-3')
<b>aJugAF</b>	GGATCTCTCCTAGGYATCTGCCTAAT
<b>aJugAR</b>	TCGGATTAGTCAGCCGTAYTG
<b>aJugBF</b>	CAACCCTAGCCTTTTCATCC
<b>aJugBR</b>	CCGTAATAGAATCCTCGTCCA
<b>aJugCF</b>	CAAACGGAGCCTCATTYTTC
<b>aJugCR</b>	ATCCTACGAAGGCRGTTGCT
<b>aJugDF</b>	CCTGAGGGGGATTCTCAGTA
<b>aJugDR</b>	ACCTAGGGGGTGTGTTTGAGC
<b>aJugEF</b>	CGCAGGACTCASMCTAATCCA
<b>aJugER</b>	TGGGAGGAATATAATTGTGAARCC
<b>aJugFF</b>	TCCACCCCTACTTCACCCTA
<b>aJugFR</b>	GGTTTGATATGRGGRGGTGT
<b>aJugGF</b>	AACTTCACCCCAGCAAACC
<b>aJugGR</b>	GGAGGAATGGGGTTAGGAAT

**Table 2.** Taxa included in phylogenetic analyses and the corresponding accession number for the mitochondrial *Cytochrome b* sequence obtained from GenBank.

<b>Taxon</b>	<b>GenBank Accession #</b>
<i>Bulweria bulwerii</i>	U74351
<i>Calonectris diomedea</i>	AY139626
<i>Calonectris leucomelas</i>	AF076045
<i>Daption capense</i>	AF076046
<i>Fulmarus glacialis</i>	U74348
<i>Fulmarus glacialoides</i>	AF076055
<i>Halobaena caerulea</i>	AF076057
<i>Aphrodroma brevirostris</i>	NC_007174
<i>Macronectes giganteus</i>	U48941
<i>Macronectes halli</i>	AF076061
<i>Pachyptila desolata</i>	AF076068
<i>Pachyptila salvini</i>	AF076069
<i>Pachyptila turtur</i>	AF076070
<i>Pachyptila vittata</i>	U74349
<i>Pagodroma nivea</i>	AF076071
<i>Pelecanoides garnoti</i>	AF076073
<i>Pelecanoides georgicus</i>	AF076074
<i>Pelecanoides magellanicus</i>	AF076075
<i>Pelecanoides urinatrix</i>	AF076076
<i>Procellaria aequinoctialis</i>	U74350
<i>Procellaria cinerea</i>	U48940
<i>Procellaria parkinsoni</i>	AF076077
<i>Procellaria westlandica</i>	AF076078
<i>Pseudobulweria aterrima</i>	JF522101
<i>Pseudobulweria aterrima</i>	U70483
<i>Pseudobulweria becki</i>	JF522102
<i>Pseudobulweria macgillivrayi</i>	JF522104
<i>Pseudobulweria macgillivrayi</i>	JF522105
<i>Pseudobulweria rostrata rostrata</i> – Fiji (F)	JF522103
<i>Pseudobulweria rostrata rostrata</i> – Marquesas (M)	JF522106
<i>Pseudobulweria rostrata rostrata</i> – Gambier (G)	U70482
<i>Pseudobulweria rostrata trouessarti</i> – New Caledonia (N)	U70493
<i>Pterodroma arminjoniana</i> – Round (R)	GQ328970
<i>Pterodroma arminjoniana</i> – Trindade (T)	GQ328969
<i>Pterodroma axillaris</i>	U74342
<i>Pterodroma barau</i>	U70489
<i>Pterodroma cahow</i>	U74331
<i>Pterodroma cookii</i>	U74345
<i>Pterodroma deserta</i>	U74333
<i>Pterodroma externa</i>	U74339



<i>Pterodroma feae</i>	FJ196356
<i>Pterodroma hasitata</i>	EU167017
<i>Pterodroma heraldica</i>	GQ328988
<i>Pterodroma hypoleuca</i>	AF076079
<i>Pterodroma incerta</i>	U74335
<i>Pterodroma inexpectata</i>	U74346
<i>Pterodroma lessonii</i>	U74337
<i>Pterodroma longirostris</i>	U74344
<i>Pterodroma macroptera</i>	EU979357
<i>Pterodroma madeira</i>	FJ196362
<i>Pterodroma magentae</i>	U74338
<i>Pterodroma mollis dubia</i>	U74655
<i>Pterodroma mollis mollis</i>	U74334
<i>Pterodroma neglecta</i>	U74341
<i>Pterodroma nigripennis</i>	U74343
<i>Pterodroma phaeopygia</i>	HQ420347
<i>Pterodroma rupinarum</i> †	KF010837
<i>Pterodroma sandwichensis</i>	HQ420351
<i>Pterodroma solandri</i>	U74347
<i>Pterodroma ultima</i>	HQ420379
<i>Puffinus assimilis</i>	AF076080
<i>Puffinus bryani</i>	HQ589355
<i>Puffinus bulleri</i>	AF076081
<i>Puffinus carneipes</i>	AF076082
<i>Puffinus creatopus</i>	AF076083
<i>Puffinus gravis</i>	U74354
<i>Puffinus griseus</i>	U74353
<i>Puffinus huttoni</i>	AF076084
<i>Puffinus lherminieri</i>	AF076085
<i>Puffinus nativitatis</i>	AF076086
<i>Puffinus newelli</i>	HQ589356
<i>Puffinus opisthomelas</i>	AF76087
<i>Puffinus pacificus</i>	AF076088
<i>Puffinus puffinus</i>	U74355
<i>Puffinus tenuirostris</i>	U74352
<i>Thalassoica antarctica</i>	AF076095

**Table 3.** Pairwise genetic distances (%) between *Pterodroma rupinarum* and *Pterodroma* and *Pseudobulweria* petrels, and other selected taxa of Procellariidae.

<b>Taxon</b>	<b><i>Pterodroma rupinarum</i></b>
<i>Pterodroma feae</i>	1.10
<i>Pterodroma deserta</i>	1.83
<i>Pterodroma madeira</i>	2.39
<i>Pterodroma mollis dubia</i>	2.53
<i>Pterodroma hasitata</i>	3.25
<i>Pterodroma cahow</i>	3.32
<i>Pterodroma mollis mollis</i>	3.38
<i>Pterodroma magentae</i>	3.42
<i>Pterodroma lessonii</i>	4.11
<i>Pterodroma incerta</i>	4.25
<i>Pterodroma macroptera</i>	4.55
<i>Pterodroma axillaris</i>	7.65
<i>Pterodroma nigripennis</i>	7.67
<i>Pterodroma solandri</i>	8.01
<i>Pterodroma externa</i>	8.16
<i>Pterodroma neglecta</i>	8.94
<i>Pterodroma baraui</i>	9.09
<i>Pterodroma longirostris</i>	9.16
<i>Pterodroma ultima</i>	9.42
<i>Pterodroma arminjoniana</i> – Trindade	9.46
<i>Pterodroma heraldica</i>	9.54
<i>Pterodroma sandwichensis</i>	9.56
<i>Pterodroma hypoleuca</i>	9.58
<i>Pterodroma phaeopygia</i>	9.73
<i>Pterodroma cookii</i>	9.98
<i>Pterodroma inexpectata</i>	10.32
<i>Pseudobulweria rostrata rostrata</i> – Marquesas	12.15
<i>Pseudobulweria rostrata rostrata</i> – Fiji	12.28
<i>Pseudobulweria aterrima</i>	12.36
<i>Pseudobulweria rostrata trouessarti</i> – New Caledonia	12.71
<i>Pseudobulweria macgillivrayi</i>	13.11
<i>Pseudobulweria rostrata rostrata</i> – Gambier	13.56
<i>Pseudobulweria becki</i>	14.64
<i>Bulweria bulwerii</i>	12.72
<i>Fulmarus glacialis</i>	14.86
<i>Pachyptila desolata</i>	13.93
<i>Pelecanoides magellanicus</i>	15.45

<i>Procellaria parkinsoni</i>	13.26
<i>Puffinus puffinus</i>	14.18

---