



1–2.4 μm Near-IR Spectrum of the Giant Planet β Pictoris b Obtained with the Gemini Planet Imager

Jeffrey Chilcote¹, Laurent Pueyo², Robert J. De Rosa³, Jeffrey Vargas³, Bruce Macintosh⁴, Vanessa P. Bailey⁴, Travis Barman⁵, Brian Bauman⁶, Sebastian Bruzzone⁷, Joanna Bulger⁸, Adam S. Burrows⁹, Andrew Cardwell^{10,11}, Christine H. Chen², Tara Cotten¹², Daren Dillon¹³, Rene Doyon¹⁴, Zachary H. Draper^{15,16}, Gaspard Duchêne^{3,17}, Jennifer Dunn¹⁶, Darren Erikson¹⁶, Michael P. Fitzgerald¹⁸, Katherine B. Follette^{4,35}, Donald Gavel¹³, Stephen J. Goodsell^{19,20}, James R. Graham³, Alexandra Z. Greenbaum²¹, Markus Hartung¹⁰, Pascale Hibon²², Li-Wei Hung¹⁸, Patrick Ingraham²³, Paul Kalas^{3,24}, Quinn Konopacky²⁵, James E. Larkin¹⁸, Jérôme Maire²⁵, Franck Marchis²⁴, Mark S. Marley²⁶, Christian Marois^{15,16}, Stanimir Metchev⁷, Maxwell A. Millar-Blanchaer^{27,36}, Katie M. Morzinski²⁸, Eric L. Nielsen^{4,24}, Andrew Norton¹³, Rebecca Oppenheimer²⁹, David Palmer⁶, Jennifer Patience³⁰, Marshall Perrin², Lisa Poyneer⁶, Abhijith Rajan³⁰, Julien Rameau¹⁴, Fredrik T. Rantakyro¹⁰, Naru Sadakuni³¹, Leslie Saddlemyer¹⁶, Dmitry Savransky³², Adam C. Schneider³⁰, Andrew Serio¹⁰, Anand Sivaramakrishnan², Inseok Song¹², Remi Soummer², Sandrine Thomas²³, J. Kent Wallace²⁷, Jason J. Wang³, Kimberly Ward-Duong³⁰, Sloane Wiktorowicz³³, and Schuyler Wolff³⁴

¹ Dunlap Institute for Astronomy & Astrophysics, University of Toronto, Toronto, ON M5S 3H4, Canada

² Space Telescope Science Institute, Baltimore, MD 21218, USA

³ Astronomy Department, University of California, Berkeley, Berkeley CA 94720, USA

⁴ Kavli Institute for Particle Astrophysics and Cosmology, Department of Physics, Stanford University, Stanford, CA, 94305, USA

⁵ Lunar and Planetary Laboratory, University of Arizona, Tucson AZ 85721, USA

⁶ Lawrence Livermore National Laboratory, 7000 East Ave., Livermore, CA 94550, USA

⁷ Department of Physics and Astronomy, Centre for Planetary Science and Exploration, University of Western Ontario, London, ON N6A 3K7, Canada

⁸ Subaru Telescope, NAOJ, 650 North A'ohoku Place, Hilo, HI 96720, USA

⁹ Department of Astrophysical Sciences, Princeton University, Princeton, NJ 08544, USA

¹⁰ Gemini Observatory, Casilla 603, La Serena, Chile

¹¹ Large Binocular Telescope Observatory, 933 N Cherry Ave., Tucson AZ 85721, USA

¹² Department of Physics and Astronomy, University of Georgia, Athens, GA 30602, USA

¹³ University of California Observatories/Lick Observatory, University of California, Santa Cruz, Santa Cruz, CA 95064, USA

¹⁴ Institut de Recherche sur les Exoplanètes, Département de Physique, Université de Montréal, Montréal QC H3C 3J7, Canada

¹⁵ University of Victoria, 3800 Finnerty Rd., Victoria, BC V8P 5C2, Canada

¹⁶ National Research Council of Canada Herzberg, 5071 West Saanich Rd., Victoria, BC V9E 2E7, Canada

¹⁷ Univ. Grenoble Alpes/CNRS, IPAG, F-38000 Grenoble, France

¹⁸ Department of Physics & Astronomy, University of California, Los Angeles, CA 90095, USA

¹⁹ Gemini Observatory, 670 N. A'ohoku Pl. Hilo, HI 96720, USA

²⁰ Department of Physics, Durham University, Stockton Rd. Durham DH1, UK

²¹ Department of Astronomy, University of Michigan, Ann Arbor, MI 48109, USA

²² European Southern Observatory, Alonso de Cordova 3107, Vitacura, Santiago, Chile

²³ Large Synoptic Survey Telescope, 950N Cherry Ave., Tucson, AZ 85719, USA

²⁴ SETI Institute, Carl Sagan Center, 189 Bernardo Ave., Mountain View, CA 94043, USA

²⁵ Center for Astrophysics and Space Science, University of California San Diego, La Jolla, CA 92093, USA

²⁶ Space Science Division, NASA Ames Research Center, Mail Stop 245-3, Moffett Field CA 94035, USA

²⁷ Jet Propulsion Laboratory, California Institute of Technology Pasadena CA 91125, USA

²⁸ Steward Observatory, University of Arizona, Tucson AZ 85721, USA

²⁹ American Museum of Natural History, Department of Astrophysics, New York, NY 10024, USA

³⁰ School of Earth and Space Exploration, Arizona State University, PO Box 871404, Tempe, AZ 85287, USA

³¹ Stratospheric Observatory for Infrared Astronomy, Universities Space Research Association,

NASA/Armstrong Flight Research Center, 2825 East Ave. P, Palmdale, CA 93550, USA

³² Sibley School of Mechanical and Aerospace Engineering, Cornell University, Ithaca, NY 14853, USA

³³ The Aerospace Corporation, 2310 E. El Segundo Blvd., El Segundo, CA 90245, USA

³⁴ Department of Physics and Astronomy, Johns Hopkins University, Baltimore, MD 21218, USA

Received 2017 January 2; revised 2017 February 27; accepted 2017 February 27; published 2017 March 28

Abstract

Using the Gemini Planet Imager located at Gemini South, we measured the near-infrared (1.0–2.4 μm) spectrum of the planetary companion to the nearby, young star β Pictoris. We compare the spectrum obtained with currently published model grids and with known substellar objects and present the best matching models as well as the best matching observed objects. Comparing the empirical measurement of the bolometric luminosity to evolutionary models, we find a mass of $12.9 \pm 0.2 M_{\text{Jup}}$, an effective temperature of 1724 ± 15 K, a radius of $1.46 \pm 0.01 R_{\text{Jup}}$, and a surface gravity of $\log g = 4.18 \pm 0.01$ [dex] (cgs). The stated uncertainties are statistical errors only, and do not incorporate any uncertainty on the evolutionary models. Using atmospheric models, we find an effective temperature of 1700–1800 K and a surface gravity of $\log g = 3.5$ –4.0 [dex] depending upon the model. These values agree well with other publications and with “hot-start” predictions from planetary

³⁵ NASA Sagan Fellow.

³⁶ NASA Hubble Fellow.

evolution models. Further, we find that the spectrum of β Pic b best matches a low surface gravity $L2 \pm 1$ brown dwarf. Finally, comparing the spectrum to field brown dwarfs, we find the the spectrum best matches 2MASS J04062677–381210 and 2MASS J03552337+1133437.

Key words: instrumentation: adaptive optics – planetary systems – stars: individual (beta Pictoris) – techniques: spectroscopic

1. Introduction

Since the discovery of 51 Pegasi b in 1995 (Mayor & Queloz 1995), the search for and discovery of extrasolar planets has broadly changed our understanding of planetary systems. Direct imaging allows for the discovery of planets on solar system-scale orbits, provides new insight into the formation and characteristics of extrasolar systems, and enables direct spectroscopic observations of their atmospheres. Despite decades of efforts to image young Jupiter-mass exoplanets still luminous as a result of their formation process, only a handful of extrasolar planets have ever been directly imaged. Examples of such planets include 2M1207b (Chauvin et al. 2005), Fomalhaut b (Kalas et al. 2008), the HR 8799 system (Marois et al. 2008, 2010), β Pic b (Lagrange et al. 2010), IRXS J1609 b (Lafrenière et al. 2010), HD 95086 b (Rameau et al. 2013), 51 Eri b (Macintosh et al. 2015), and HD 131399 Ab (Wagner et al. 2016).

β Pictoris (β Pic, HD 39060) is a 24 ± 3 Myr (Bell et al. 2015), A6V star located at a distance of 19.44 ± 0.05 pc (Gray et al. 2006; van Leeuwen 2007). β Pic represents the earliest example of high-contrast imaging to directly detect a circumstellar disk (Smith & Terile 1984). The disk is seen edge-on and shows an asymmetric structure that has been attributed to planetary perturbations (Burrows et al. 1995; Kalas & Jewitt 1995; Mouillet et al. 1997; Heap et al. 2000; Augereau et al. 2001; Golimowski et al. 2006). The planet β Pic b was first detected by VLT/NaCo (Lagrange et al. 2010). Since then, its orbit has been constrained via careful astrometric monitoring (Chauvin et al. 2012; Nielsen et al. 2014; Millar-Blanchaer et al. 2015; Wang et al. 2016). The atmospheric properties of the planet have been estimated from photometric and spectroscopic measurements using a number of adaptive optics (AO) fed instruments such as Gemini/NICI (Boccaletti et al. 2013), Magellan AO (Males et al. 2014; Morzinski et al. 2015), Gemini/Gemini Planet Imager (GPI; Chilcote et al. 2015), and VLT/SPHERE (Baudino et al. 2015).

Because of the presence of a dynamically perturbed debris disk (Mouillet et al. 1997; Lagrange et al. 2012a; Millar-Blanchaer et al. 2015), along with well documented constraints on its age (Bell et al. 2015), the β Pic planetary system is an ideal laboratory to understand the formation and evolution of substellar objects near the planet/brown dwarf limit. The luminosity and colors of β Pic b are indeed similar to early-type brown dwarfs (Currie et al. 2013; Bonnefoy et al. 2014; Males et al. 2014; Morzinski et al. 2015). However, constraints from radial velocity observations place its dynamical mass well below the value expected for an isolated field object of the same luminosity (Lagrange et al. 2012b). The recently identified population of young isolated brown dwarfs with low surface gravity (Kirkpatrick et al. 2008; Cruz et al. 2009; Delorme et al. 2012; Allers & Liu 2013; Faherty et al. 2013; Gagné et al. 2015; Schneider et al. 2016) is a more appropriate sample to compare to β Pic b. Recent work has provided a preliminary look at the near-infrared low resolution spectrum of β Pic b (Bonnefoy et al. 2014; Baudino et al. 2015; Chilcote et al.

2015) and has highlighted the similarities between β Pic b and low-gravity brown dwarfs in young associations and moving groups. Such results naturally lead to questions regarding the formation mechanisms underlying these two types of objects that have apparently very different dynamical origins (isolated versus orbiting another star) and yet look similar from a spectrophotometric standpoint (Baudino et al. 2015).

In this paper, we provide the empirical basis for such future investigations by presenting the most comprehensive spectrum of the β Pic b planet to date. Our data, obtained with the GPI between 2014 and 2016, cover the *Y*, *J*, *H*, and *K* bands. In Section 2, we discuss the observations, data reduction, and spectral extraction. In Section 3.2, we compare the spectrum of β Pic b to those of a wide array of brown dwarfs, and present the best-fitting objects along with comparisons to low surface gravity brown dwarf spectral standards. An analysis of the spectrum, along with existing photometry, and comparison to existing models are presented in Section 3. Finally, conclusions are discussed in Section 4.

2. Observations and Data Reduction

GPI was designed and built to directly image and spectroscopically characterize young, Jupiter-sized, self-luminous extrasolar planets (Macintosh et al. 2006; Graham et al. 2007). Installed at Gemini South in the fall of 2013, GPI underwent commissioning from the fall of 2013 to the fall of 2014 before becoming part of the standard instrument suite at Gemini South.

β Pic was observed by the GPI Verification and Commissioning team on 2013 November 16 and 18, 2013 December 10 and 11, and 2014 March 23. A log of the observations is given in Table 1. Observations performed during the instrument commissioning period (2013 November–2014 November) were not all taken in a stable science environment, and various operational modes were used during a specific data set to evaluate the performance of the instrument. For instance, during the 2013 November 18 observations, 32 individual 59.6 s images were obtained in coronagraphic mode, with the cryocoolers operating at a reduced power level to reduce the effects of vibration introduced into the telescope (Chilcote et al. 2012; Larkin et al. 2014). Observations taken for testing purposes including changes in the AO performance parameters and the vibration levels of the IFS cryocoolers affect the shape and stability of the GPI point-spread function (PSF) on a shorter timescale than would be expected from typical stable operations of Gemini.

Y-band data were obtained as part of a Gemini Large and Long Program focused on the study of debris disks with GPI (GS-2015B-LP-6). These observations occurred when the planet had already moved significantly inwards, resulting in a higher level of noise in the estimated spectrum. The average seeing measured using a Differential Image Motion Monitor (DIMM), total exposure times, and instrument configurations of the observations presented in this paper are listed in Table 1,

Table 1
GPI Observations of β Pic

Date	Observing Mode	Exposure Time (s)	Parallactic Rotation ($^{\circ}$)	DIMM Seeing ($''$)
2013 Nov 16 ^{a,b}	K1-Spec.	1789	26	1.09
2013 Nov 16 ^{a,b}	K2-Spec.	1253	18	0.93
2013 Nov 18 ^{a,b,c,d,e}	H-Spec.	2446	32	0.68
2013 Dec 10 ^{a,b,h}	H-Spec.	1312	38	0.77
2013 Dec 10 ^{a,b,e,f}	J-Spec.	1597	18	0.70
2013 Dec 11 ^{a,b,h}	H-Spec.	556	64	0.46
2014 Mar 23 ^{a,b}	K1-Spec.	1133	47	0.47
2014 Mar 26 ^b	K2-Spec.	2923	26	0.86
2014 Nov 08 ^a	H-Spec.	2147	25	0.77
2015 Dec 05 ^g	Y-Spec.	2002	37	1.12

Notes.

^a This data set was originally astrometrically published by Millar-Blanchaer et al. (2015).

^b Observations taken during GPI verification and commissioning tests.

^c This data set was originally astrometrically published by Macintosh et al. (2014).

^d This data set for a spectrum was published by Chilcote et al. (2015).

^e CCR power state was changed during observations.

^f This data set was originally published by Bonnefoy et al. (2014).

^g Data part of Gemini's Large and Long program (GS-2015B-LP-6).

^h AO performance parameters adjusted during GPI verification and commissioning tests.

Table 2
Measured β Pic b Parameters

Reference	T_{eff} (K)	$\log g$ (cgs)	Radius (\mathcal{R}_{Jup})	Mass (\mathcal{M}_{Jup})	Init. Spec. Entropy (k_{B} baryon $^{-1}$)
Currie et al. (2013)	1575 ^a	3.8 ± 0.2	1.65 ± 0.06	6.9 ^a	...
Bonnefoy et al. (2013)	1700 ± 100	4.0 ± 0.5	$1.5\text{--}1.6^{\text{a}}$	9–10	≥ 9.3
Bonnefoy et al. (2014)	1650 ± 150	< 4.7	1.5 ± 0.2	< 20	> 10.5
Chilcote et al. (2015)	1600–1700	3.5–4.5
Baudino et al. (2015)	1550 ± 150	3.5 ± 1	1.76 ± 0.24	4.0 ^a	...
Morzinski et al. (2015)	1708 ± 23	4.2	1.45 ± 0.02	12.7 ± 0.3	9.75
This work (Bolometric)	1724 ± 15	4.18 ± 0.01	1.46 ± 0.01	12.9 ± 0.2	
This work (Spectrophotometry) ^b	1700	4.0	1.41	15.0	9.75

Notes.

^a Value calculated in Morzinski et al. (2015).

^b Best fit from the Drift Phoenix and Spiegel & Burrows (2012) models.

along with the specifics of the data sets that were obtained during verification and commissioning.

Each of these data sets was individually and independently reduced using the GPI pipeline, with standard recipes provided by the GPI Data Reduction Pipeline (Perrin et al. 2014). A short arc lamp exposure was taken with each science observation set to account for offsets of the lenslet spectra due to flexure within the IFS. The GPI data reduction pipeline was used to reduce all images by applying dark corrections, fitting and removing vibration-induced microphonics noise (Chilcote et al. 2012; Ingraham et al. 2014), removing bad pixels, fitting satellite spot locations (Wang et al. 2014), and extracting each microspectra to create a 37 channel spectral cube. For K -band data, sky frames were subtracted, if available, to remove the thermal background.

High-contrast imaging surveys for faint substellar companions typically use Angular Differential Imaging (ADI; Marois et al. 2006) and/or Spectral Differential Imaging (SDI; Sparks & Ford 2002). These PSF subtraction processes often lead to self-

subtraction of any resolved faint companions, creating systematic biases in the extracted photometry that need to be corrected for. Previous studies have used forward modeling approaches, where a negative version of the PSF is injected into the reduced images prior to PSF subtraction to estimate the flux and position of faint companions detected in PSF-subtracted images (e.g., Hinkley et al. 2013; Oppenheimer et al. 2013; Crepp et al. 2015). For this study, we use a different forward modeling approach that analytically models the effect of stellar PSF subtraction on the PSF of the planet to find the best planet spectrum that matches the signal of the planet after stellar PSF subtraction. We use the generalized Karhunen–Loève Image Projection (KLIP)-FM method, described in Pueyo (2016), which combines the KLIP algorithm (Soummer et al. 2012) and forward modeling. Pueyo (2016) demonstrated the effectiveness of KLIP-FM at reducing the systematic biases inherent in ADI/SDI PSF subtraction by injecting and recovering point sources with known spectra into GPI J -band β Pic data. KLIP-FM has also been used to measure the astrometry of β Pic b with GPI at milliarcsecond precision

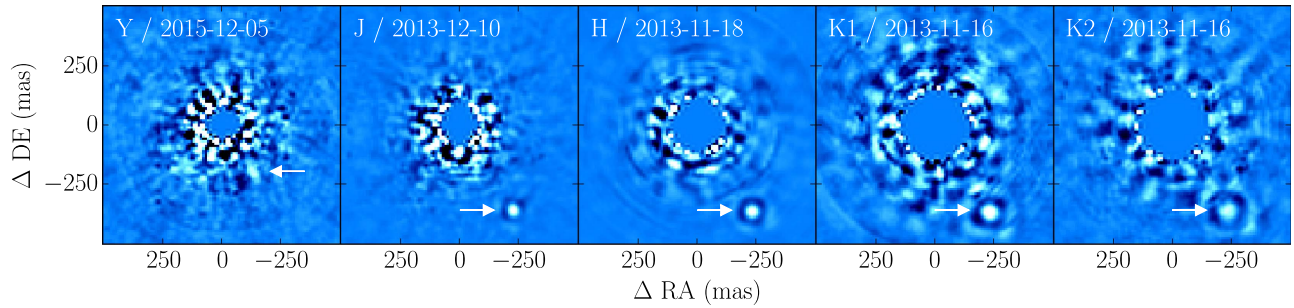


Figure 1. PSF-subtracted images of β Pic in each of the five GPI filters, with the location of β Pic b highlighted. The images have been rotated such that north is up and east is to the left, with a linear color scale in units of contrast between $\pm 2.5 \times 10^{-5}$ (± 11.5 mag). The significant orbital motion of the planet between 2013 and 2015 is apparent (Wang et al. 2016). Each data set was processed using the same KLIP parameters (seven annuli, four segments per annulus, one pixel minimum movement criteria), with a reference PSF constructed from the first 10 KL modes. The final images were created by averaging these PSF-subtracted data cubes along the wavelength axis.

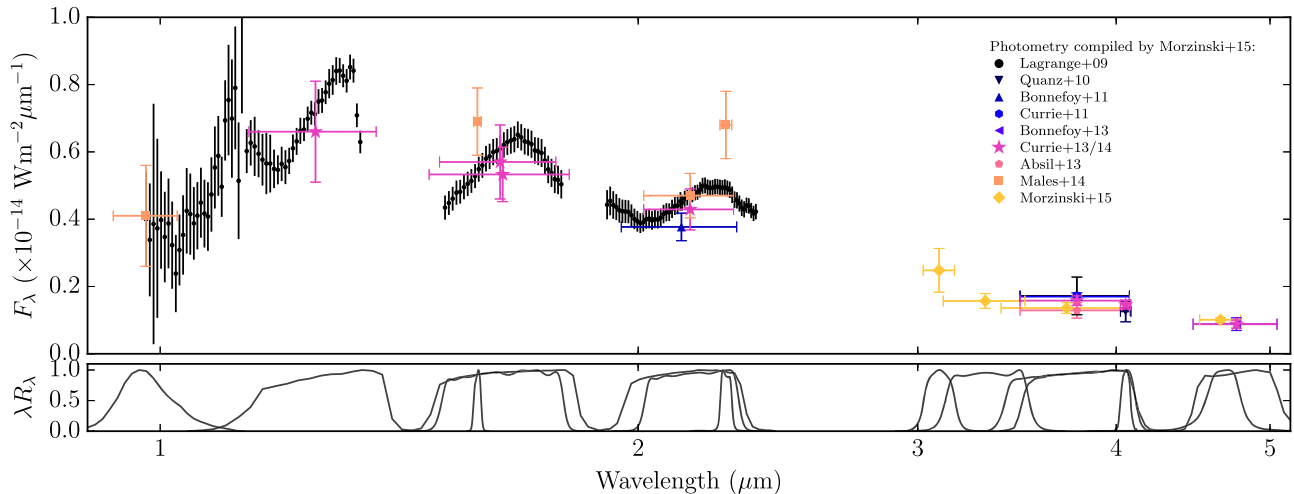


Figure 2. (Top panel): GPI spectrum of β Pic b extending from the Y band to the K band (black points). Photometric measurements of β Pic b, as compiled by Morzinski et al. (2015), are also plotted (color and symbols given in the legend; Lagrange et al. 2009; Quanz et al. 2010; Bonnefoy et al. 2011, 2013; Currie et al. 2011, 2013; Absil et al. 2013; Males et al. 2014; Morzinski et al. 2015). (Bottom panel): normalized filter transmission curves for the various photometric measurements of β Pic b.

(Wang et al. 2016). The final PSF-subtracted images of β Pic b in each of the five GPI filters are shown in Figure 1.

As described in Wang et al. (2016), we use the four satellite spots in each spectral channel to estimate the PSF of β Pic b. When using such a PSF-fitting method, biases on the spectrum can arise due to a mismatch between the FWHM of the planet and model PSFs. Such a mismatch can occur as a result of the preliminary high-pass filter step before the KLIP PSF subtraction, carried out in order to mitigate the impact of the residual atmospheric halo. We calibrated this effect in an ad hoc fashion by exploring an increasing sequence of high-pass filtering cutoff frequencies. Typically, the signal-to-noise ratio (S/N) of the planet increases with a more aggressive filter that eliminates the residual AO halo, but such filtering schemes create spurious slopes in the spectrum since they affect the morphology of the planet PSF and of the satellite spots differently. Fortunately, in all data sets considered here the planet S/N is high enough so that there exist a large range of high-pass filtering parameters for which the planet spectrum is stable (between 8 and 15 px, as defined in Wang et al. 2016). The resulting spectrum that minimizes the residuals at the location of β Pic b was then estimated by forward modeling, normalized by the average satellite spot intensity in each

wavelength channel. An 8000 K, $\log g = 4.0$ [dex] (Gray et al. 2006) BT-NEXTGEN³⁷ model (Allard et al. 2012) convolved to the resolution of GPI, was used to approximate the A6V stellar spectrum of β Pic A. This allows the instrumental and telluric features under identical conditions to be estimated for the planet spectrum and then removed. To exclude low-S/N data at the edges of the filter bandpasses, we trim the β Pic b spectrum to exclude wavelength channels where the filter transmission is below 80%, excluding 27 of the 185 channels of the full spectrum. The average S/N per resolution element of the final trimmed spectrum, plotted in Figure 2, was 3 in Y, 17 in J, 15 in H, 14 in K1, and 19 in K2.

3. Results and Discussion

3.1. Bolometric Luminosity

The bolometric luminosity of β Pic b was most recently estimated to be $\log L_{\text{bol}}/L_{\odot} = -3.78 \pm 0.03$ [dex] by Morzinski et al. (2015),³⁸ calculated using GPI J- and

³⁷ <https://phoenix.ens-lyon.fr/Grids/BT-NextGen/>

³⁸ We adopt the same convention as Morzinski et al. (2015), where script letters are used to denote nominal solar and Jovian values as defined by IAU resolutions.

H-band spectroscopy and a recalibration of optical through thermal–infrared photometry to remove any systematic bias introduced in previous studies. The bolometric luminosity of β Pic b was reassessed using the new spectroscopic measurements presented in Section 2, which significantly improves the sampling of its spectral energy distribution (SED) in the *Y* (0.98–1.13 μm) and *K* (1.91–2.38 μm) bands.

The procedure is similar to that employed by Morzinski et al. (2015). The GPI spectrum was combined with band-averaged photometry at 3.31 μm , 3.34 μm , *L'* (3.80 μm), 4.10 μm , and *M'* (4.72 μm), the values for which are given by Morzinski et al. (2015). The *Y_S* (0.985 μm) and *K* (2.27 μm) photometry measurements used by Morzinski et al. (2015) were rejected from this analysis due to the significant overlap with the new GPI spectrum presented in Figure 2. The measured SED (0.98–4.72 μm) was extended to shorter and longer wavelengths using two blackbody functions. The optical blackbody (0.01–0.97 μm) was normalized to the integrated flux of the GPI *Y*-band spectrum, while the infrared blackbody (4.73–1000 μm) was normalized to the *M'* photometric point. The bolometric luminosity was then measured by integrating the synthetic spectrum formed by the combination of the measured SED and the two blackbody functions.

The final luminosity and its uncertainty were estimated using a Monte Carlo approach by repeating the integration 10^5 times. Random draws were made for each trial from each of the band-averaged photometric points. The individual GPI spectra were varied by drawing from a normal distribution created from a quadratic sum of the band-averaged uncertainty and the satellite spot ratio uncertainty. Conservatively, each point within an individual GPI spectrum was adjusted by the same amount to account for correlation between the spectral channels. The temperature of the two blackbody functions was drawn from a uniform distribution between 1500 and 1900 K for each trial, and were normalized as described previously. Despite the large range of temperatures, there was no correlation between the choice of temperature for the blackbody extensions and the resulting luminosity. Using the median and 1σ range of the 10^5 trials, the bolometric luminosity of β Pic b was found to be $\log L_{\text{bol}}/\mathcal{L}_{\odot} = -3.76 \pm 0.02$ [dex], consistent with the value reported in Morzinski et al. (2015). Although the choice of a blackbody function is a simplistic one, it only has a small contribution to the total flux of β Pic b, with the short- and long-wavelength blackbody extensions contributing $3\% \pm 1\%$ and $14\% \pm 1\%$, respectively.

The bolometric luminosity of β Pic b and the age estimate for the system of 24 ± 3 Myr (Bell et al. 2015) were compared to the Baraffe et al. (2003) hot-start evolutionary models³⁹ to derive a model-dependent estimate of the mass (*M*), temperature (T_{eff}), radius (*R*), and surface gravity (*g*) of β Pic b. A Monte Carlo procedure was used to propagate the uncertainty of the luminosity (L_{bol}) and age (*t*) to the four derived parameters. At each step, a random luminosity and age were drawn from two normal distributions, one in $\log L_{\text{bol}}$ and the other in *t*. The model grid was linearly interpolated first in $\log t$ to the randomly selected age, and then in $\log M$ to an arbitrarily high resolution. Interpolation was performed in $\log L_{\text{bol}}$, $\log T_{\text{eff}}$, *R*, and $\log g$ due to their behavior as a function of $\log t$ and $\log M$. The randomly selected luminosity was then used to select a model within the interpolated grid. This process was repeated 10^5 times

yielding $M = 12.9 \pm 0.2 \mathcal{M}_{\text{Jup}}$, $T_{\text{eff}} = 1724 \pm 15$ K, $R = 1.46 \pm 0.01 \mathcal{R}_{\text{Jup}}$, and $\log g = 4.18 \pm 0.01$ [dex] (Figure 3). These are consistent with the results of a previous analysis by Morzinski et al. (2015), who reported a mass, effective temperature, and radius for β Pic b of $12.7 \pm 0.3 \mathcal{M}_{\text{Jup}}$, 1708 ± 23 K, and $1.45 \pm 0.02 \mathcal{R}_{\text{Jup}}$, respectively.

3.2. Comparison with Field Objects

The spectrum of β Pic b was compared with a library of 1600 M-, L-, and T-dwarf spectra compiled from the SpeX Prism library⁴⁰ (Burgasser 2014), the IRTF Spectral Library⁴¹ (Cushing et al. 2005), the Montreal Spectral Library⁴² (e.g., Gagné et al. 2015; Robert et al. 2016), and the sample of young ultracool dwarfs presented in Allers & Liu (2013). The spectral types for the objects within the library were obtained from a number of literature sources, and are given for the individual objects described later in this section. The near-infrared spectral type was used for objects with both an optical and near-infrared spectral type. The literature was also searched to obtain the surface gravity classifications for each object, using either of the schemes outlined by Kirkpatrick (2005), Kirkpatrick et al. (2006), Cruz et al. (2009) (α , β , γ , δ , in descending order of surface gravity), or Allers & Liu (2013) (FLD-G, INT-G, VL-G, similarly). Briefly, both classification schemes categorize ultracool dwarfs into three groupings: field surface gravity consistent with that seen for old field dwarfs (α , FLD-G), intermediate surface gravity (β , INT-G), and very low surface gravity consistent with that seen for young brown dwarfs (γ , VL-G). Kirkpatrick (2005) define a fourth classification, δ , for objects that exhibit low-gravity features in their spectra even stronger than those classified as γ .

The spectrum of each object was degraded to the spectral resolution of GPI (between $\lambda/\delta\lambda = 35$ at *Y* and $\lambda/\delta\lambda = 79$ at *K2*) by convolution with a Gaussian function of the appropriate width. The uncertainties were similarly degraded, normalized by the effective number of spectral channels within the convolution window. The spectrum of β Pic b was compared to this library using three different procedures. First, the five GPI bands were fit independently to explore the sensitivity of each bandpass to the spectral type and surface gravity of β Pic b. Second, the five bands were fit simultaneously but were each normalized independently and without constraint to account for both the dispersion in near-infrared colors of young low-gravity brown dwarfs (e.g., Leggett et al. 2003) and for the uncertainty in the photometric calibration of the GPI data. Third, the five bands were fit simultaneously as before, but the normalization of each band was restricted by the uncertainty of the photometric calibration of the GPI data (Maire et al. 2014). We find that all three methods yield similar results in terms of the spectral type of β Pic b and provide strong evidence for low surface gravity.

3.2.1. Fits to the Individual Bands

The spectrum of β Pic b in each of the four near-infrared bands (*YJHK*) was fit to the corresponding spectrum of each comparison object within the library. The *K*-band spectrum of β Pic b was created by combining the GPI *K1* and *K2* spectra, discarding the overlapping spectral channels within the *K1*

³⁹ <http://phoenix.ens-lyon.fr/Grids/AMES-Cond/ISOCHRONES/>

⁴⁰ <http://pono.ucsd.edu/~adam/browndwarfs/spexprism>

⁴¹ http://irtfweb.ifa.hawaii.edu/~spex/IRTF_Spectral_Library

⁴² <http://jgagneastro.wordpress.com/the-montreal-spectral-library/>

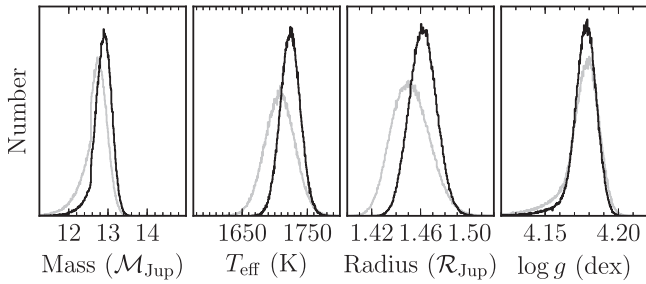


Figure 3. Histograms of the values of the four parameters from the Monte Carlo analysis comparing the empirical luminosity and age of β Pic b to the Baraffe et al. (2003) hot-start evolutionary models. This analysis was performed using the luminosity and age presented in this paper (black histogram), and using the values presented in Morzinski et al. (2015) ($\log L_{\text{bol}}/L_{\odot} = -3.78 \pm 0.03$ [dex] and $t = 23 \pm 3$ Myr; gray histogram). The asymmetric distribution for mass is caused by the significant increase in the predicted luminosity due to the onset of deuterium burning.

spectrum due to systematics in the K_I spectrum. The spectrum of the comparison object was multiplied by a scaling factor to account for the different distance and radius between that object and β Pic b. The optimal scaling factor was found analytically for each object and band (e.g., Burgasser et al. 2016). The uncertainties on the spectrum of β Pic b and the comparison object were added in quadrature. The number of degrees of freedom was typically 29 for the Y band, 32 for the J band, 34 for the H band, and 56 for the K band. The minimum χ^2_{ν} for each object in each band is plotted as a function of spectral type in Figure 4.

The sensitivity of the J -, H -, and K -band spectra to surface gravity is apparent in Figure 4, with the low surface gravity objects typically providing a better fit to β Pic b than field-gravity objects of the same spectral type. Given the low resolution of the GPI data, this sensitivity is primarily due to differences in the shape of the continuum between field and low-gravity objects (Allers & Liu 2013), rather than differences in the strengths of gravity-sensitive absorption lines. The difference between the spectra of field and low-gravity objects is most pronounced in the H and K bands, where the minimum χ^2_{ν} of the low surface gravity objects is significantly lower than that of field-gravity objects of the same spectral type (Figure 4).

We estimated the spectral type of β Pic b in each band by comparing to the spectra of field surface gravity standards (Burgasser et al. 2006; Kirkpatrick et al. 2010) and low surface gravity standards (Allers & Liu 2013). The weighted average of the numerical spectral types of the standards, weighted according to the ratio of their χ^2 to the minimum χ^2 of all the standards (e.g., Burgasser et al. 2010), was adopted as the spectral type. A systematic uncertainty of one-half subtype was assumed for the standards. This process was repeated for both surface gravity subsets, and for each of the five bands. The adopted spectral type and corresponding uncertainty for β Pic b are given for each band in Figure 4, ranging from L2 to L6.5 for the field surface gravity standards and from L1.5 to L2.5 for the low surface gravity standards, both rounded to the nearest half subtype.

3.2.2. Unrestricted Fit to the Full Spectrum

The full GPI spectrum of β Pic b was then fit to each object within the library. Each band of the spectrum was scaled independently to account for the dispersion in near-infrared colors seen for brown dwarfs of a given spectral type (Leggett

et al. 2003) and for the uncertainty in the absolute flux calibration of the GPI data (Maire et al. 2014). This was achieved by summing the χ^2 of each object in each band, equivalent to fitting the five bands simultaneously with five independent scale factors. The resulting minimum χ^2_{ν} values for each object are plotted in Figure 5 (top panel). The number of degrees of freedom was typically 152, but was lower for objects that had limited spectral coverage. As with the previous fit, the spectral type of β Pic b was estimated as $L4 \pm 2.5$ using the field-gravity standards and $L2 \pm 1$ using the low-gravity standards, consistent with previous estimates based on fits to the broadband photometry of β Pic b (Males et al. 2014). The significantly lower χ^2_{ν} values for the low-gravity objects within the library provide strong evidence for the low surface gravity of β Pic b, consistent with previous photometric and spectroscopic analyses (Chilcote et al. 2015; Morzinski et al. 2015).

Of all the objects within the library, the best-fit object from the unrestricted fit was found to be 2MASS J03552337+1133437 (2M 0355+11, $\chi^2_{\nu} = 0.45$), a nearby (8–9 pc, Faherty et al. 2013; Liu et al. 2013) and extremely red (Cruz et al. 2009) brown dwarf with a near-infrared (optical) spectral type of L3 VL-G (L5 γ). The spectrum of 2M 0355+11 is plotted with β Pic b in Figure 6 (top panel). Based on a kinematic analysis and the spectral signatures of youth, 2M 0355+11 is a confirmed member of the 149 $^{+51}_{-19}$ Myr (Bell et al. 2015) AB Doradus moving group (Faherty et al. 2016). Due to the unusual near-infrared spectrum of 2M 0355+11, Gagné et al. (2015) assign it a special spectral classification of L3–L6 γ , and classify objects with similar spectra as J0355 type. These objects are visually similar to L4 γ objects but with a shallower CO band at 2.3 μm (Gagné et al. 2015). The spectrum of 2M 0355+11 exhibits strong indicators of low surface gravity, and the unusual near- and mid-infrared colors were explained by flux redistribution to longer wavelengths due to enhanced dust or thick clouds in the photosphere (Faherty et al. 2013, 2016).

A good fit to the spectrum of 2MASS J22351658–3844154 ($\chi^2_{\nu} = 0.52$) was also found, an L1.5 γ candidate member of the 45 \pm 4 Myr (Bell et al. 2015) Tucana-Horologium moving group (Gagné et al. 2015). Of the low-gravity near-infrared standards defined by Allers & Liu (2013), the best fit was found to be the L2 VL-G standard 2MASS J0536199–192039 ($\chi^2_{\nu} = 0.55$), a candidate member of both the 42 $^{+6}_{-4}$ Myr (Bell et al. 2015) Columba moving group (Gagné et al. 2014, 2015), and the 24 \pm 3 Myr (Bell et al. 2015) β Pictoris moving group (Faherty et al. 2016). This object and the other early- to mid-L near-infrared spectral standards from Allers & Liu (2013) are plotted in Figure 7.

3.2.3. Restricted Fit to the Full Spectrum

Finally, we fit the morphology within each band and the relative flux levels of the different bands by restricting the range over which the scale factor for each band can vary based on the expected photometric accuracy of GPI. In order to restrict this range, the χ^2 equation was modified with a cost term based on a comparison of the scale factor for a band and the uncertainty on the satellite spot ratio in that band (Maire et al. 2014). The χ^2 for the k^{th} comparison object was

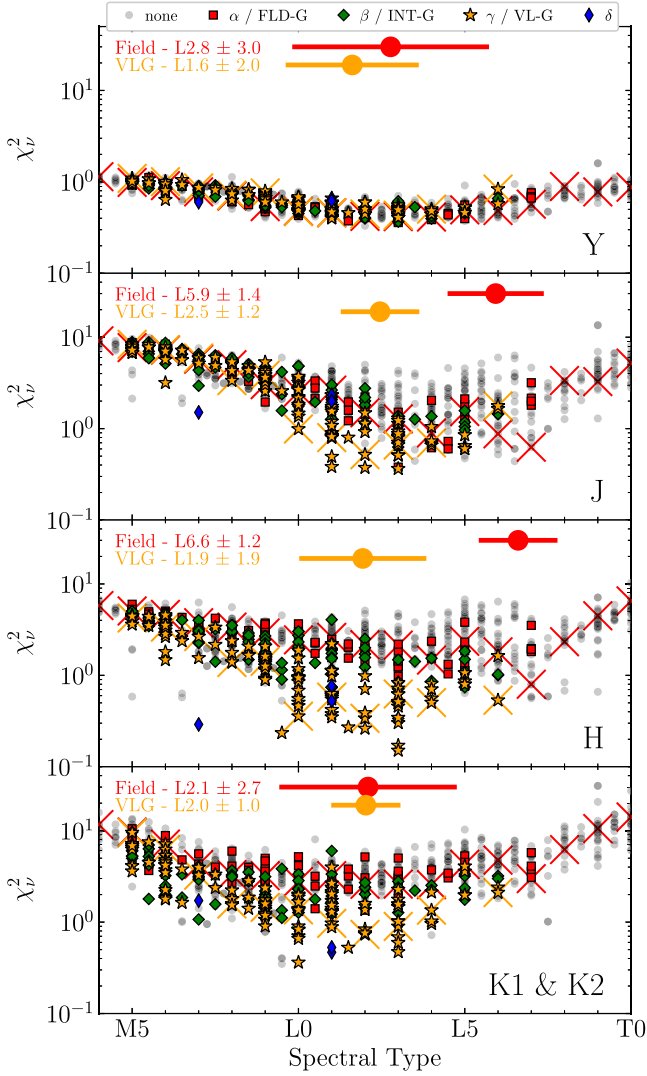


Figure 4. χ_ν^2 as a function of spectral type for the M, L, and T dwarfs within the spectral library fit to the spectrum of β Pic b in each of the GPI bandpasses. The *K1* and *K2* spectra were combined to create a single *K*-band spectrum. Different markers were used to indicate the different gravity classes using the scheme described in Allers & Liu (2013), with the legend given at the top of the figure. The optical and near-infrared gravity classifications have been grouped together for clarity. Objects without any gravity classification are plotted as gray circles. Spectral standards for field-gravity (Burgasser et al. 2006; Kirkpatrick et al. 2010) and low-gravity (Allers & Liu 2013) objects are highlighted with large red and yellow crosses, respectively.

calculated as

$$\chi_k^2 = \sum_{j=0}^4 \sum_{i=0}^{n_j} \left[\frac{F_j(\lambda_i) - \alpha_k \beta_{j,k} C_{j,k}(\lambda_i)}{\sqrt{\sigma_{F_j}^2(\lambda_i) + \sigma_{C_{j,k}}^2(\lambda_i)}} \right]^2 + \sum_{j=0}^4 n_j \left[\frac{\beta_{j,k} - 1}{\sigma_{m_j}} \right]^2, \quad (1)$$

where $F_j(\lambda_i)$ and $\sigma_{F_j}(\lambda_i)$ are the flux and uncertainty of β Pic b in the i^{th} wavelength channel of the j^{th} band and $C_{j,k}(\lambda_i)$ and $\sigma_{C_{j,k}}(\lambda_i)$ are the flux and uncertainty of the k^{th} comparison object in the same channel and band. The spectrum of the comparison object is multiplied both by a scale factor α_k , which

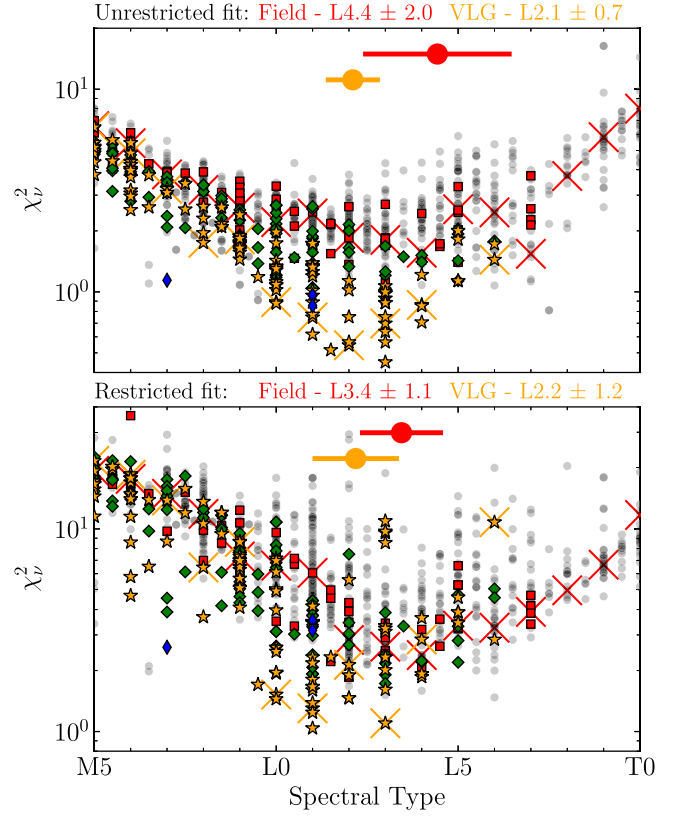


Figure 5. χ_ν^2 as a function of spectral type for each object within the spectral library for the unrestricted fit described in Section 3.2.2 (top panel) and for the restricted fit described in Section 3.2.3 (bottom panel) to the GPI spectrum of β Pic b. The symbols are as in Figure 4. In both cases, the low-gravity objects typically have lower χ_ν^2 values than field-gravity objects of the same spectral type. The spectral type of β Pic b was estimated for both gravity subsets, with the estimates being consistent between the two different fitting procedures.

is the same for each band, and by an additional scale factor for the j^{th} band $\beta_{j,k}$. The first term of Equation (1) gives the standard χ^2 equation, summed over all n_j wavelength channels in the j^{th} band, and over all five bands. This is modified by a cost term that compares the band-dependent scaling factor $\beta_{j,k}$ to the fractional uncertainty of the satellite spot flux ratio σ_{m_j} for the j^{th} band (Maire et al. 2014).

The minimum χ_ν^2 for each object is plotted for this restricted fit in Figure 5 (bottom panel). The number of degrees of freedom was typically 151, but was lower for objects that had limited spectral coverage. As with the two previous fits, the spectral type of β Pic b was estimated using the field-gravity and low-gravity standards to be $L3.5 \pm 1.0$ and $L1.5 \pm 1.5$, respectively. Although these estimates of the spectral type are consistent with the results of the unrestricted fit, the minimum χ_ν^2 values are higher for each object due to the additional cost term included in the restricted fit, an effect that is most pronounced for the mid- to late-type M dwarfs within the library.

For the restricted fit case, the best-fitting result from the spectral library is 2MASS J04062677–381210 (2M 0406–38, $\chi_\nu^2 = 1.04$), a brown dwarf with an L0 γ /L1 VL-G (optical/near-infrared; Allers & Liu 2013; Faherty et al. 2013) spectral type (Figure 6, bottom panel). The kinematics of 2M 0406–38 are ambiguous in terms of nearby moving group membership, being a probable member of several nearby

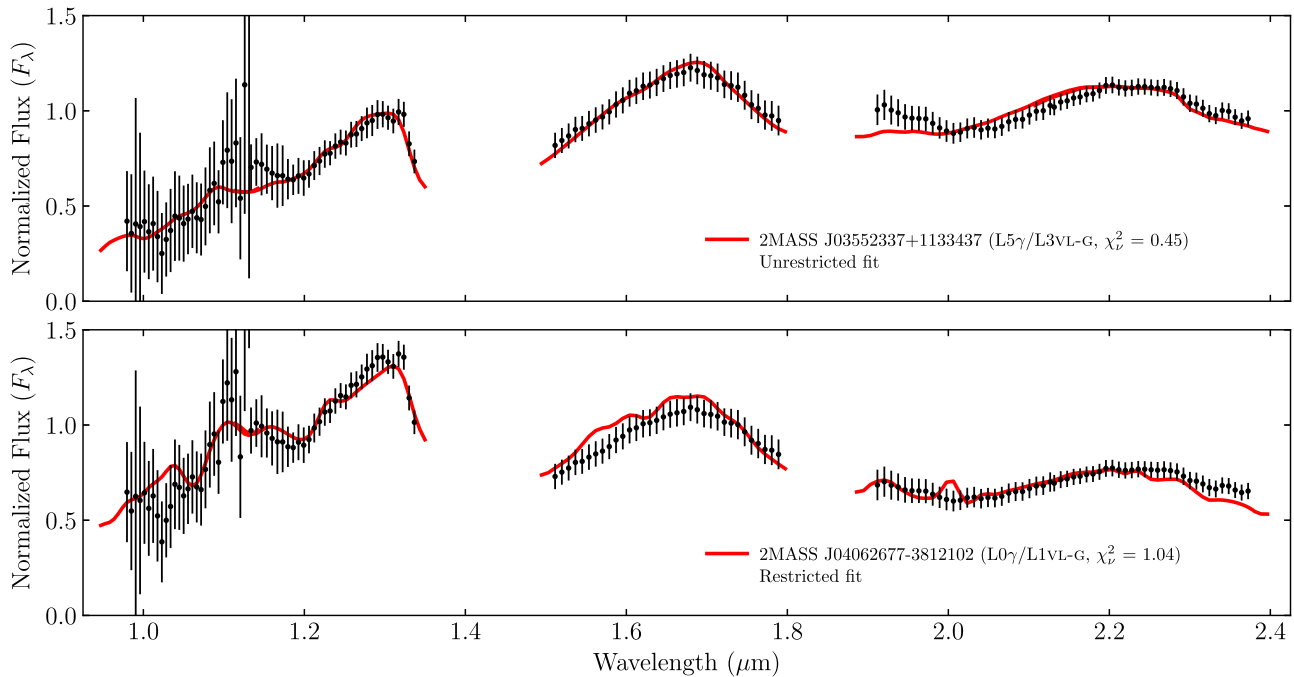


Figure 6. Best-fit object to the spectrum of β Pic b within the spectral library for the unrestricted (top panel; Allers & Liu 2013) and restricted (bottom panel; Kirkpatrick et al. 2010) fits. The optical and near-infrared spectral type and gravity classifications are given for both objects.

moving groups as well as having space motion consistent with old field objects (Faherty et al. 2016). Other objects with a good fit include 2MASS J01415823–4633574 ($\chi_\nu^2 = 1.46$); an L0 γ /L2 (optical/near-infrared; Cruz et al. 2009; Schneider et al. 2014) high-probability candidate member of the Tucana-Horologium moving group (Gagné et al. 2014); and the Allers & Liu (2013) near-infrared low-gravity standards 2MASSW J2208136+292121 (L3 VL-G, $\chi_\nu^2 = 1.10$), a candidate member of the β Pictoris moving group (Liu et al. 2016), and 2MASSI J0518461–275645 (L1 VL-G, $\chi_\nu^2 = 1.30$), a probable member of the Columba moving group (Liu et al. 2016). All of the Allers & Liu (2013) low-gravity standards are shown in Figure 7 (right panel).

3.2.4. Spectral Type and Gravity Classification of β Pic b

Based on a comparison of the full GPI spectrum of β Pic b to the Allers & Liu (2013) low-gravity standards, the spectral type of β Pic b was estimated using the unrestricted and restricted procedures to be $L2.1 \pm 0.7$ and $L2.2 \pm 1.2$, respectively. Although these two estimates are consistent with one another for β Pic b, we would expect the unrestricted fit to more reliably estimate the spectral type of young low-gravity objects due to the observed range of their near-infrared colors. Rounding to the nearest half subtype, we adopt a spectral type of $L2 \pm 1$ for β Pic b, consistent with previous photometric and spectroscopic estimates of $L2$ – 5 (Currie et al. 2013), $L2\gamma \pm 2$ (Bonnetfoy et al. 2013), $L2.5 \pm 1.5$ (Males et al. 2014), and $L1_{-1.5}^{+1}$ (Bonnetfoy et al. 2014). The significantly improved fits to the low-gravity objects within the spectral library (Figures 4 and 5) demonstrate that β Pic b has a near-infrared spectrum consistent with that of a low surface gravity object, and as such we assign it a surface gravity classification of γ . We do not assign a classification in the Allers & Liu (2013) scheme as the bandwidths of the indices

used to define this scheme are smaller than the spectral resolution of the GPI spectrum.

This spectral type estimate was converted into a bolometric luminosity using the J - and K_S -band empirical spectral type to bolometric correction relations for young, low-gravity objects derived by Filippazzo et al. (2015). We estimate an absolute J -band magnitude in the MKO system (Tokunaga et al. 2002) of β Pic b from the flux-calibrated GPI spectrum of $M_J = 12.56 \pm 0.08$, a bolometric correction of $BC_J = 1.48 \pm 0.28$, a bolometric magnitude of $M_{\text{bol}} = 14.04 \pm 0.29$, and a bolometric luminosity of $\log L_{\text{bol}}/L_\odot = -3.72 \pm 0.12$ [dex]. Similarly, for the K_S band, $M_K = 10.86 \pm 0.15$, $BC_K = 3.26 \pm 0.13$, $M_{\text{bol}} = 14.11 \pm 0.20$, $\log L_{\text{bol}}/L_\odot = -3.75 \pm 0.08$ [dex]. Both of these luminosity estimates are consistent with the empirical bolometric luminosity of β Pic b presented in Section 3.1. We also convert the absolute H -band magnitude of β Pic b ($M_H = 11.80 \pm 0.09$) into an effective temperature of 1681 ± 64 K using the relations derived by Filippazzo et al. (2015). The spectral type was also converted into an effective temperature using the relations presented in Faherty et al. (2016). Using the polynomial fit to bona fide and high-likelihood moving group members, the spectral type of β Pic b corresponds to an effective temperature of 1847 ± 242 K. Including probable moving group members in the polynomial fit increases the derived effective temperature to 1888 ± 215 K, while including both probable moving group members and T-dwarf imaged planetary-mass companions decreases it to 1787 ± 240 K. These estimates are consistent with the effective temperature estimated from the evolutionary models in Section 3.1.

3.3. Comparison with Atmospheric Models

Using the spectral data obtained with GPI, we computed updated best spectral model fits combining GPI spectral data with previously published photometry of β Pic b (Lagrange et al. 2009; Quanz et al. 2010; Bonnetfoy et al. 2011; Currie

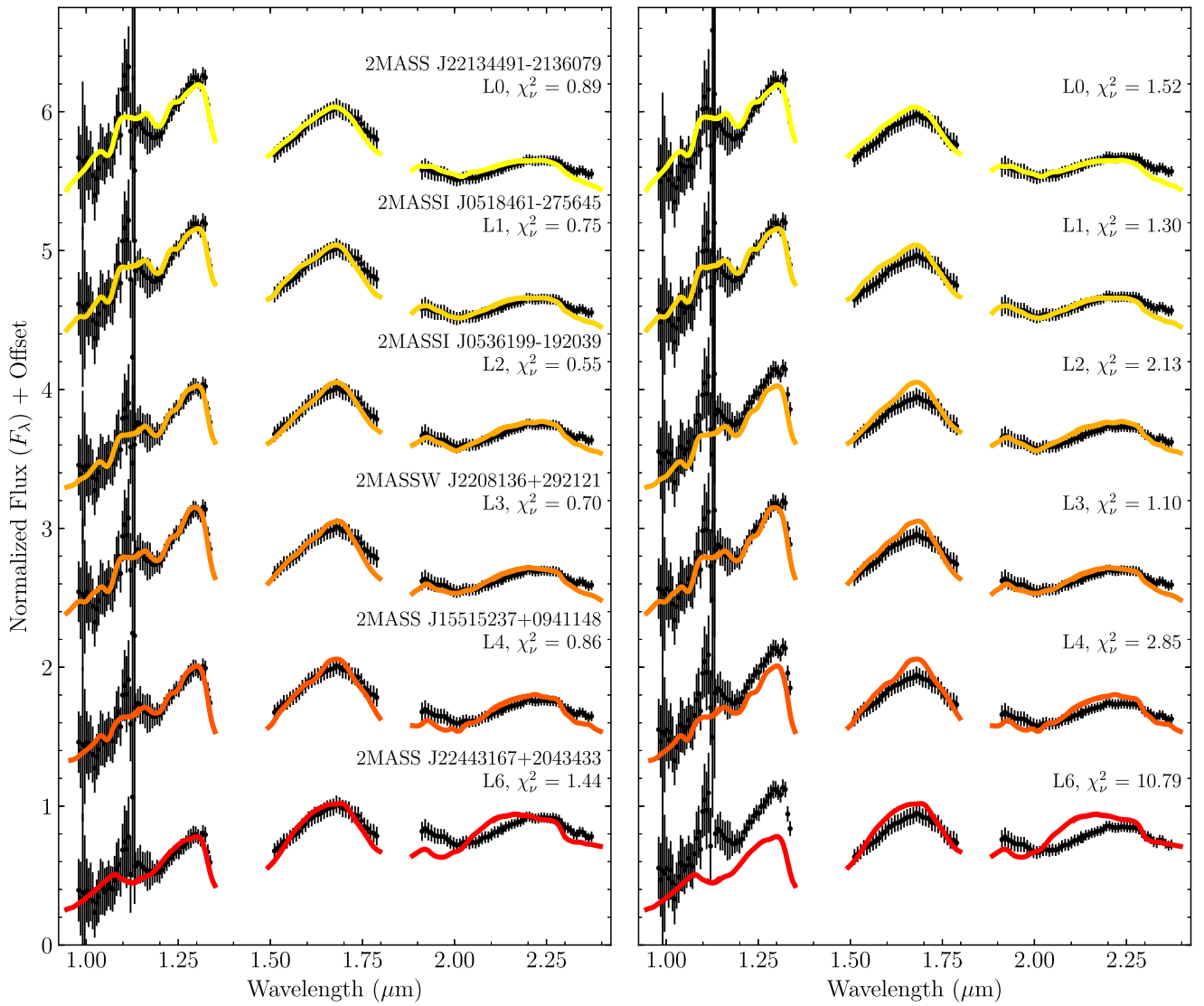


Figure 7. Spectrum of β Pic b (black points) fit to the L-dwarf near-infrared low-gravity standards from Allers & Liu (2013; solid curves) using the unrestricted fit described in Section 3.2.2 (left panel) and the restricted fit described in Section 3.2.3 (right panel). The spectrum of each standard is normalized to the flux at $1.65 \mu\text{m}$, and then offset for clarity.

et al. 2011, 2013; Bonnefoy et al. 2013; Absil et al. 2013; Males et al. 2014; Morzinski et al. 2015). The SED of β Pic b was compared to publicly available grids of model atmospheres: AMES-DUSTY⁴³ (Chabrier et al. 2000; Allard et al. 2001), BT-SETTL (2015)⁴⁴ (Allard et al. 2012), and DRIFT PHOENIX⁴⁵ (Woitke & Helling 2003; Helling & Woitke 2006; Helling et al. 2008). All of these model grids are calculated using the PHOENIX atmosphere models. The AMES-DUSTY grid combines the NASA AMES molecular H_2O and TiO line lists and includes the treatment for the condensation of dust within the atmosphere. The BT-SETTL (2015) models are part of the BT model family, using updated line lists and revised solar abundances. BT-SETTL uses a detailed cloud model to define the distribution of condensates within the atmosphere. The DRIFT PHOENIX model grids combine the PHOENIX model with the non-equilibrium cloud model DRIFT.

⁴³ <https://phoenix.ens-lyon.fr/Grids/AMES-Dusty>

⁴⁴ https://phoenix.ens-lyon.fr/Grids/BT-Settl/CIFIST2011_2015

⁴⁵ <http://svo2.cab.inta-csic.es/theory/newov>

The fitting procedure was similar to that described in Section 3.2 for the individual spectra in each model grid. The spectra were convolved such that their spectral resolution matched the spectral resolution in each of the GPI wavelength bands (Larkin et al. 2014). To compute the synthetic photometry, the model spectra were integrated over the bandpass using filter curves published for each individual filter and instrument. The (χ^2_ν) statistic for each model in comparison to the spectral data was calculated using the method described in Section 3.2 and using Equation (1), where $C_{j,k}(\lambda_i)$ is the flux of model spectrum in the same channel and band. The χ^2_ν statistic was calculated for each band, and for the spectral bands a punitive factor to account for the uncertainty on the satellite spot ratio in that band was used. We compute this best-fit result using only the existing photometry points and for the photometry points combined with the GPI spectrum. The best-fit results span a range of grid models from 1700 to 1800 K, with a $\log g = 3\text{--}4$ [dex] and an $R = 1.17\text{--}1.41 \mathcal{R}_{\text{Jup}}$. The best fit to the combined photometry and spectroscopy is

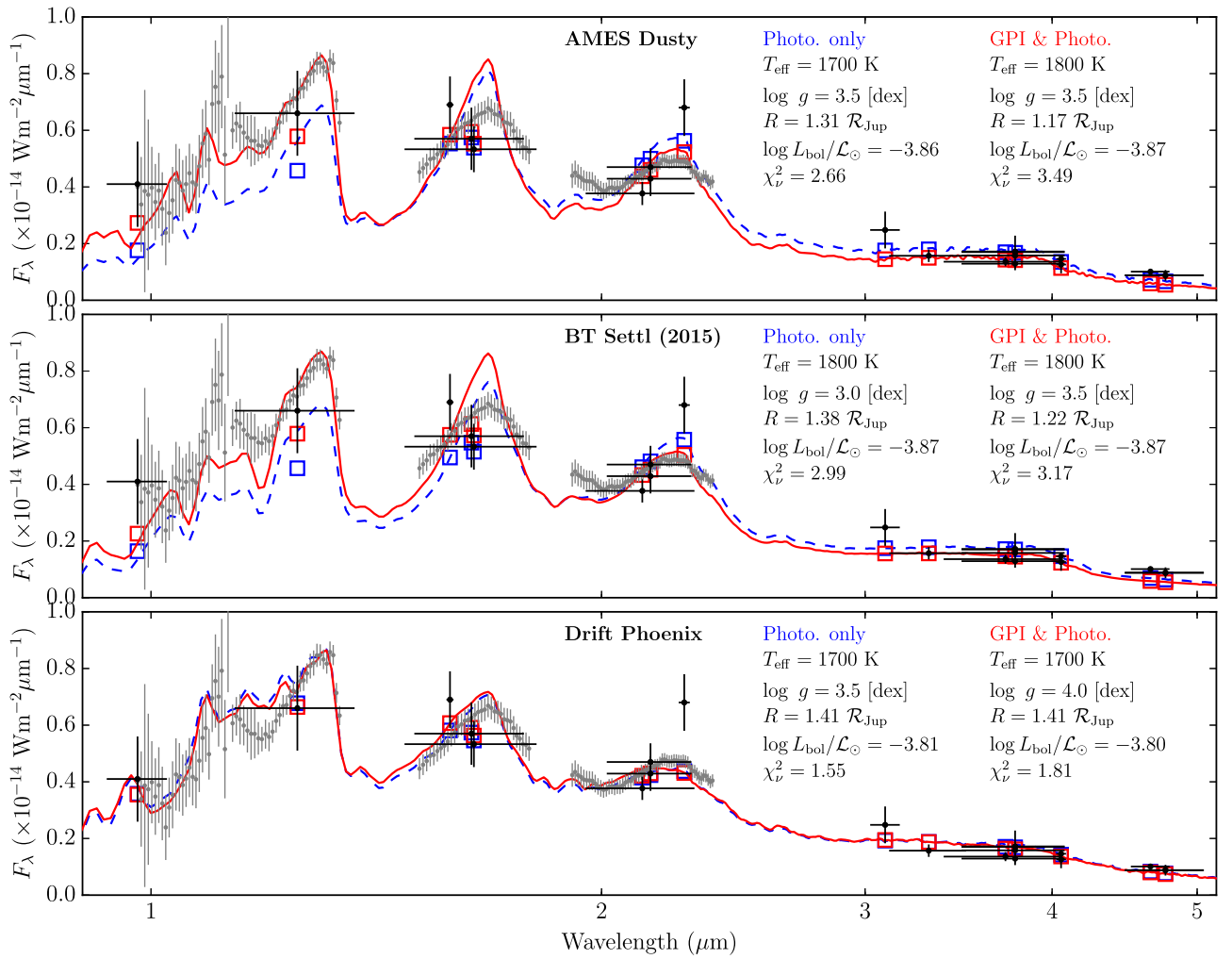


Figure 8. Best-fit models within each of the three atmospheric model grids found using only the photometric measurements (blue dashed curve) and using both the photometric and spectroscopic measurements (red solid curve) of β Pic b. The photometric measurements of β Pic b compiled by Morzinski et al. (2015) are plotted as black points, while the GPI spectra presented in this study are plotted as light gray points. Synthetic photometry (open blue and red squares) was computed for each model using the filter profiles shown in Figure 2.

Table 3
Best-fit Atmospheric Models

Grid Name	Data Used	Grid Points				Interpolated Grid			
		T_{eff} (K)	$\log g$ ([dex])	Radius (\mathcal{R}_{Jup})	χ_{ν}^2	T_{eff} (K)	$\log g$ ([dex])	Radius (\mathcal{R}_{Jup})	χ_{ν}^2
AMES-DUSTY	Photometry Only	1700	3.5	1.31	2.66	1704	3.50	1.31	2.66
	GPI Spectrum & Photometry	1800	3.5	1.17	3.49	1706	4.50	1.18	3.45
BT-SETTL (2015)	Photometry Only	1800	3.0	1.38	2.99	1781	3.26	1.34	2.63
	GPI Spectrum & Photometry	1800	3.5	1.22	3.17	1815	3.29	1.25	3.04
DRIFT PHOENIX	Photometry Only	1700	3.5	1.41	1.55	1708	3.66	1.41	1.54
	GPI Spectrum & Photometry	1700	4.0	1.41	1.81	1651	3.00	1.58	1.21

found in the DRIFT PHOENIX grid ($T_{\text{eff}} = 1700 \text{ K}$, $\log g = 4.0$ [dex], $R = 1.41 \mathcal{R}_{\text{Jup}}$, $\chi_{\nu}^2 = 1.81$). The best-fit spectrum for each of the different models for both photometry only and GPI spectrum and photometry are shown in Figure 8 and the results are shown in Table 3.

This process was repeated on an interpolated version of each grid, with the points between grid points interpolated using a quadratic spline in the logarithm of the flux, where the spacing of T_{eff} and $\log g$ was reduced to an arbitrarily high resolution of 1 K and 0.005 [dex], respectively. The grids were also

interpolated using a bilinear interpolation scheme that produced similar results. We ran the same analysis as above and find that the best-fit results span a range of grid models from 1651–1815 K, with a $\log g = 3.00$ –4.50 [dex] and an $R = 1.18$ –1.58 \mathcal{R}_{Jup} . Again, the best-fit grid is produced by the DRIFT PHOENIX with $T_{\text{eff}} = 1651 \text{ K}$, $\log g = 3.00$ [dex], $R = 1.58 \mathcal{R}_{\text{Jup}}$, and $\chi_{\nu}^2 = 1.21$. The χ_{ν}^2 surfaces for the interpolated grids are shown in Figure 9, with confidence intervals calculated from the probability $p \propto \exp(-\chi^2/2)$. As the χ^2 does not incorporate any model uncertainties, these

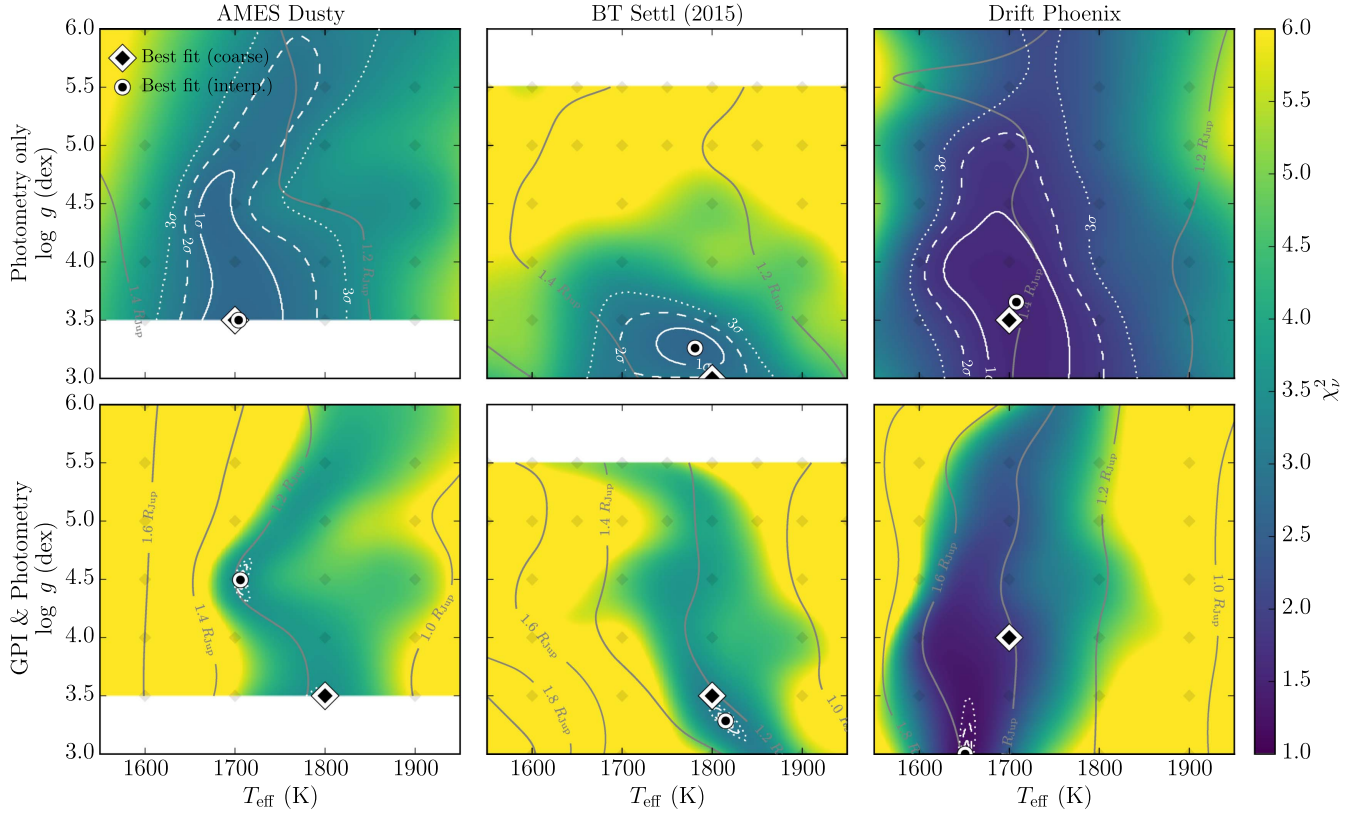


Figure 9. Goodness-of-fit statistic (χ^2_ν) for the AMES-DUSTY, BT-SETTL (2015), and DRIFT PHOENIX model grids as a function of effective temperature and surface gravity. Grid points are indicated with light gray diamonds. The points between the model grid points were the linearly interpolated version of the grid, with a spacing of 1 K for T_{eff} and 0.005 [dex] for $\log g$. The best-fit model within the original grid is indicated by a large diamond, with the best-fit model within the interpolated grid indicated by a circle. The white contours indicate the 68% (solid), 95% (dashed), and 99% (dotted) confidence intervals, calculated using the χ^2 .

Table 4
Best-fit Combined Evolutionary and Atmospheric Models

Grid Name	Data Used	Grid Points			Interpolated Grid		
		Mass (\mathcal{M}_{Jup})	Initial Entropy (k_{B} /baryon)	χ^2_ν	Mass (\mathcal{M}_{Jup})	Initial Entropy (k_{B} /baryon)	χ^2_ν
Cloud-free (1 \times solar)	Photometry Only	14.0	9.75	15.39	13.53	13.00	15.18
	Spectrum & Photometry	15.0	9.50	68.97	15.00	9.55	68.45
Cloud-free (3 \times solar)	Photometry Only	14.0	9.75	14.46	13.48	12.98	13.91
	Spectrum & Photometry	15.0	9.50	54.72	15.00	9.56	53.52
Hybrid clouds (1 \times solar)	Photometry Only	14.0	9.75	7.17	13.56	12.73	7.00
	Spectrum & Photometry	15.0	9.75	7.70	14.97	9.77	7.02
Hybrid clouds (3 \times solar)	Photometry Only	14.0	9.75	7.43	13.52	12.94	7.17
	Spectrum & Photometry	15.0	9.75	5.96	14.99	9.79	4.87

confidence intervals only represent the uncertainty on these parameters for this specific model.

3.4. Comparison with Combined Evolutionary and Atmospheric Models

The observed SED was also compared with the combined evolutionary and atmospheric models of Spiegel & Burrows (2012)⁴⁶ using the same fitting procedure as with the previous grids. These models differ from the atmosphere-only models in that the grid was computed in terms of the mass and initial entropy of the planet, rather than the effective temperature and surface gravity. The Spiegel & Burrows (2012) grid is bound

by the canonical low-entropy “cold-start” ($8 k_{\text{B}}$ /baryon) and high-entropy “hot-start” ($13 k_{\text{B}}$ /baryon) models (c.f. Marley et al. 2007), where k_{B} is Boltzmann’s constant. Here, the initial entropy describes how efficiently heat was radiated away from the forming planet during accretion; formation through gravitational instability may result in a significantly higher initial entropy than formation through core accretion. These evolutionary models were then coupled with an atmospheric model (Hubeny et al. 2003; Burrows et al. 2006) to create synthetic spectra at each grid point. The atmospheric model used either a solar (1 \times) or super-solar (3 \times) metallicity, and either cloud-free or with a linear superposition of cloudy and cloud-free models (hybrid clouds). In total, four grids of synthetic spectra, spanning this range of atmospheric properties, were compared to the SED of β Pic b. As the age of

⁴⁶ <http://www.astro.princeton.edu/~burrows/>

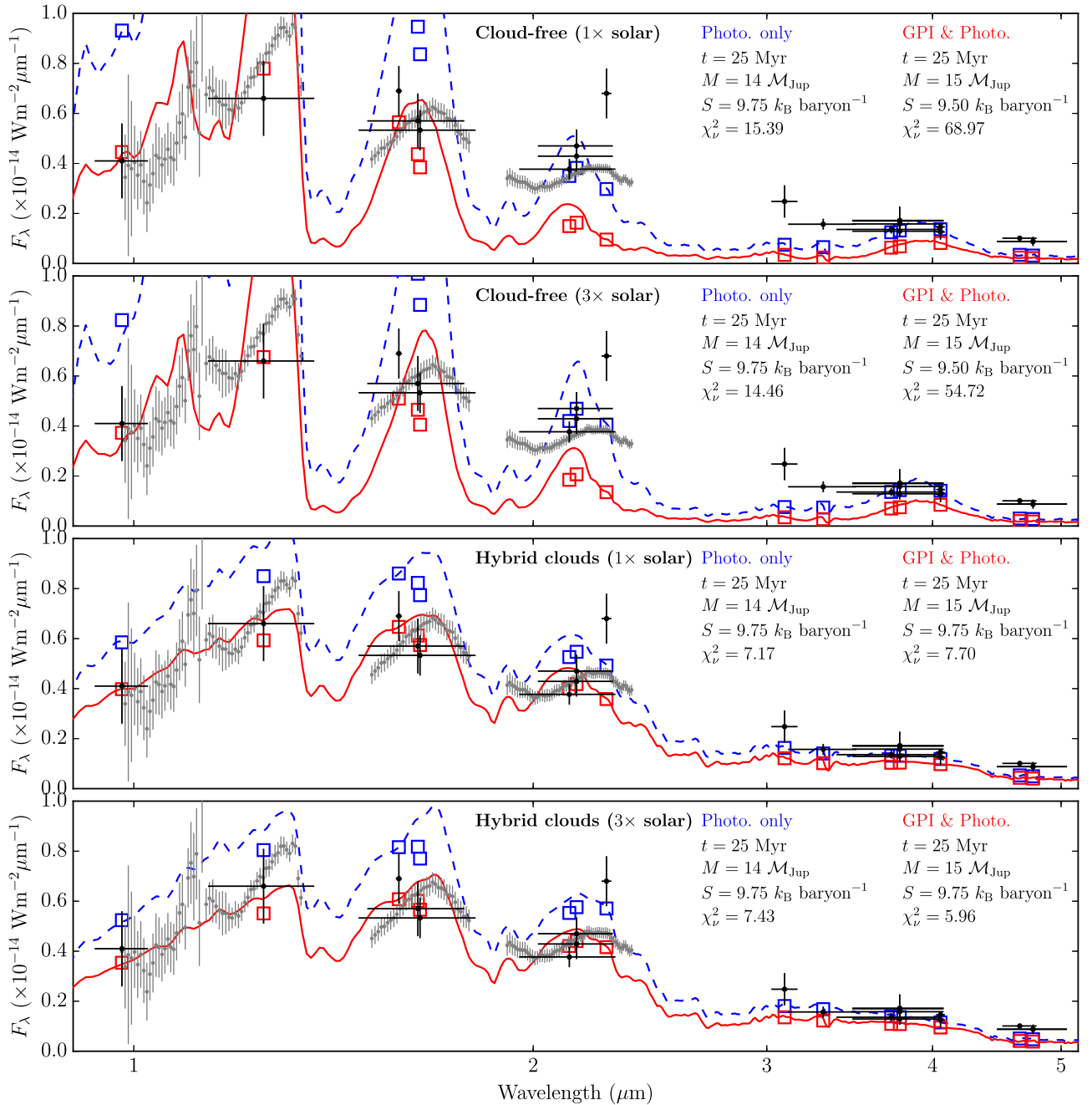


Figure 10. Best-fit model within each of the four Spiegel & Burrows (2012) grids found using only the photometric measurements (blue dashed curve) and using both the photometric and spectroscopic measurements (red solid curve) of β Pic b. The photometric measurements of β Pic b compiled by Morzinski et al. (2015) are plotted as black points, while the GPI spectra presented in this study are plotted as light gray points. Synthetic photometry (open blue and red squares) was computed for each model using the filter profiles shown in Figure 2.

β Pic b is well-constrained, the SED of the planet was only fit to the 25 Myr models within each of the four grids.

As with the fits to the atmospheric models in Section 3.3, two fits of the SED of β Pic b were made to each grid, the first using only the photometry presented in Morzinski et al. (2015), and the second combining this with the GPI spectrum presented in this study. The results from these fits are given in Table 4, and the best-fit spectrum for each of the different models for both photometry only and GPI spectrum and photometry is shown in Figure 10. The results of the fit to only the photometry of β Pic b are consistent with that of Morzinski et al. (2015), with a best-fit model at a mass of $14.0 \mathcal{M}_{\text{Jup}}$ and

an initial entropy of $9.75 k_{\text{B}}/\text{baryon}$ for each grid. Including the GPI spectrum slightly changed the best fit in each case, to a lower initial entropy for the cloud-free models, and to a higher mass for both the cloud-free and hybrid cloud models. In general, the quality of the fit to the spectrum was poor, with a minimum χ^2_{ν} of 6.0 (Figure 10), compared with a minimum χ^2_{ν} of 1.8 for the model atmosphere fits presented in Section 3.3. Including the GPI spectrum in the fit significantly increases the χ^2_{ν} for the cloud-free models, and as such they are not discussed further.

This process was repeated on an interpolated version of the grid to explore the effects of the finitely sampled grid on the

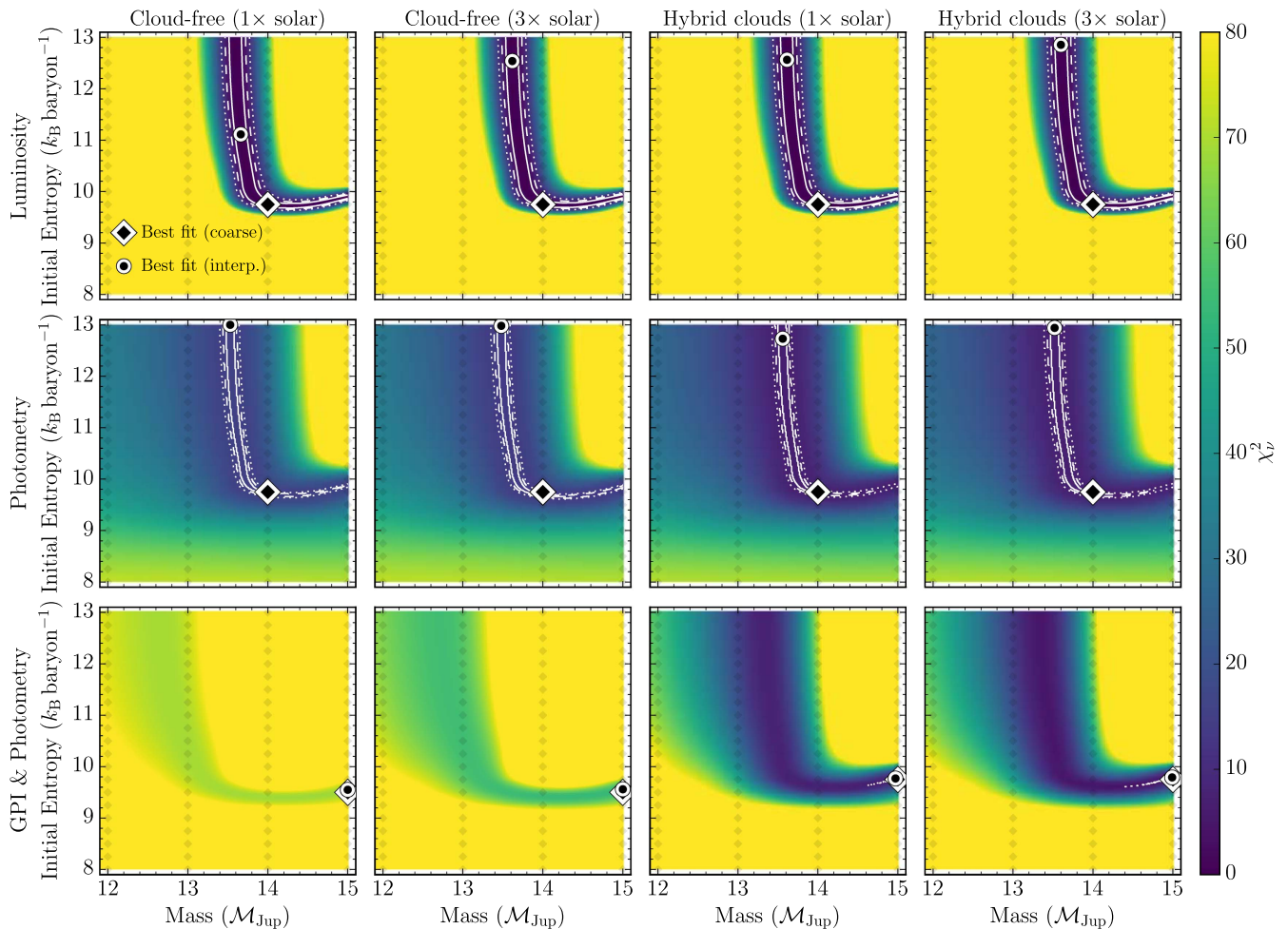


Figure 11. Goodness-of-fit statistic (χ^2_ν) for the cloud-free and hybrid clouds models with both solar and super-solar metallicity (Spiegel & Burrows 2012) fits to the luminosity (top row), photometry (middle row), and photometry and spectroscopy (bottom row) of β Pic b. Model fluxes were interpolated between the grid points (small gray diamonds) to a resolution of $0.01 \mathcal{M}_{\text{Jup}}$ in mass and $0.0025 k_B/\text{baryon}$ in initial entropy. The best-fit model within the original grid is indicated by a large diamond, with the best-fit model within the interpolated grid indicated by a circle. The solid, dashed, and dotted contours indicates the 1, 2, and 3 σ confidence interval derived from the χ^2 surface. The poor quality of the fit of these models to the GPI spectrum (bottom row) leads to extremely small confidence intervals as the χ^2 does not incorporate any model uncertainty.

results. As in Section 3.3, a χ^2_ν surface was calculated for each model grid for both of the data sets. These surfaces, shown in Figure 11, suggest that the global minimum may have been missed by Morzinski et al. (2015) due to the spacing of the grid points in mass. Using only the photometry, we find a minimum at a significantly higher initial entropy of $13 k_B/\text{baryon}$ and a lower mass of $13.5 \mathcal{M}_{\text{Jup}}$, compared with $9.75 k_B/\text{baryon}$ and $14.0 \mathcal{M}_{\text{Jup}}$ reported by Morzinski et al. (2015). The 1σ confidence interval extends between 10 and $13 k_B/\text{baryon}$, but is tightly constrained in terms of mass. The fits to the hybrid cloud models including the GPI spectrum are consistent with those from the coarse grid described previously; however, the χ^2_ν surface is similar to that from the photometry-only fit. Although the minimum is at an intermediate entropy ($9.75 k_B/\text{baryon}$) and high mass ($15 \mathcal{M}_{\text{Jup}}$), this extends to lower masses ($13.5 \mathcal{M}_{\text{Jup}}$) at a range of entropies ($10\text{--}13 k_B/\text{baryon}$). This complex minimum is also seen when fitting the empirical luminosity of β Pic b given in Section 3.1 to the luminosity of each model grid calculated by integrating the synthetic spectra (Figure 11, top row). These higher initial entropies are consistent with previous comparisons to evolutionary models

showing that the initial entropy is higher than $10.5 k_B/\text{baryon}$ at the 95% confidence level (Bonnetfoy et al. 2014).

4. Conclusion

We present the spectrum of β Pic b in the Y , J , H , and K bands as observed with the GPI between 2013 and 2016 using images that were taken as part of the verification and commissioning process, as part of an astrometric monitoring program, and as part of a Gemini Large and Long Program using GPI. Not all of the presented data were originally intended to be used for spectral extraction of the planet, but it is of sufficient quality and is valuable as it improves our understanding of the emission spectrum of β Pic b. Using the standard GPI data reduction pipeline and KLIP-FM to extract the spectrum, we recover the planet at a high S/N in the Y , J , H , and K bands, allowing a nearly full sample across the near-IR.

We compare the SED of β Pic b to that of young, cool, low surface gravity brown dwarfs, and to several grids of model atmospheres that are valid over the temperature and surface gravity range expected for these objects. Compared with the

near-infrared spectra of brown dwarfs in young moving groups and the field, we find that the best-fit spectra are those of young low-gravity objects. Of all the objects compared, the spectrum of β Pic b best matches that of 2MASS J03552337+1133437, a confirmed member of the 149_{-19}^{+51} Myr AB Doradus moving group that exhibits strong indicators of low surface gravity (Faherty et al. 2013; Liu et al. 2013; Gagné et al. 2015). Based on our fits to the low-gravity standards of Allers & Liu (2013), we adopt a spectral type and gravity classification of $L2\gamma \pm 1$ for β Pic b.

Combining the GPI spectrum with literature photometry spanning from Y_S ($0.985 \mu\text{m}$) to M' ($4.72 \mu\text{m}$), we directly measure the bolometric luminosity of the planet to be $\log L_{\text{bol}}/L_{\odot} = -3.76 \pm 0.02$ [dex], consistent with previous estimates derived from photometry alone (Morzinski et al. 2015). Comparing to “hot-start” evolutionary models, Baraffe et al. (2003) yields model-dependent estimates for the physical properties of β Pic b of $M = 12.9 \pm 0.2 M_{\text{Jup}}$, $T_{\text{eff}} = 1724 \pm 15$ K, $R = 1.46 \pm 0.01 R_{\text{Jup}}$, and $\log g = 4.18 \pm 0.01$ [dex]. The full SED of β Pic b was also compared to atmospheric and evolutionary model grids spanning a range of atmospheric properties and formation scenarios. The best atmospheric fits we find are to a DRIFT PHOENIX model atmosphere with $T_{\text{eff}} = 1700$ K, $\log g = 4.0$ [dex], and $R = 1.41 R_{\text{Jup}}$ ($\chi_{\nu}^2 = 1.81$). These values are consistent with those derived from the bolometric luminosity and with the empirical spectral type to effective temperature relations derived for young low-gravity brown dwarfs (e.g., Faherty et al. 2016).

Comparing to the combined atmospheric and evolutionary models of Spiegel & Burrows (2012) yielded a best fit at a mass of $15 M_{\text{Jup}}$ and an intermediate entropy of $9.75 k_{\text{B}}/\text{baryon}$, with models including a cloudy atmosphere being strongly preferred over those with a clear atmosphere. Although the best fit was found at an initial entropy that is intermediate to the predictions of the “cold-start” and “hot-start” formation scenarios, the χ_{ν}^2 surface for the interpolated version of the grid has a complex structure with a minimum extending to lower masses ($\sim 13.5 M_{\text{Jup}}$) at a range of initial entropy values between ~ 10 and $13 k_{\text{B}}/\text{baryon}$, the higher value being similar to that predicted by the “hot-start” formation scenarios. Although the points on the finer grid are based on an interpolation of the coarse grid, this analysis suggests that the choice of grid-point location and spacing may significantly impact the resulting best fit. If the grid were sampled more finely or shifted by $0.5 M_{\text{Jup}}$, and assuming the interpolated points are a reasonable representation of the “true” model with those parameters, Morzinski et al. (2015) would have reported a higher entropy as the best-fit model.

The empirical bolometric luminosity presented here combined with the dynamical mass constraints from Lagrange et al. (2012b) and the comparison to the atmospheric and evolutionary models of Spiegel & Burrows (2012) both suggest a “hot-start” high-entropy formation scenario for β Pic b, and are consistent with the prediction that “cold-start” low-entropy formation is an unlikely formation mechanism for wide-orbit giant planets (e.g., Marleau et al. 2017). As β Pic b heads toward maximum elongation in 2023, it will become separated enough from its host star to be resolved by the near- and mid-IR instruments on the upcoming *James Webb Space Telescope*. Combining the measurements presented here with mid-IR spectroscopy would provide further insight into the atmospheric properties and evolutionary history of the planet.

Interpretation of a well-sampled SED spanning over a decade in wavelength would be extremely well-suited for retrieval techniques (e.g., Burningham et al. 2017) rather than by fitting to finitely spaced model grids.

The Gemini Planet Imager collaboration would like to acknowledge the memory of Leslie Saddlemyer of Canada’s National Research Council, who passed away in January of 2017. Les served as the systems engineer and opto-mechanical lead for GPI during its design, construction, and he deserves great credit for the capabilities of our instrument and team.

We thank the anonymous referee for the helpful comments that improved the quality of this work. The authors would like to acknowledge the financial support of the Gemini Observatory, the Dunlap Institute, University of Toronto, the NSF Center for Adaptive Optics at UC Santa Cruz, the NSF (AST-0909188; AST-1211562, AST-1405505), NASA Origins (NNX11AD21G; NNX10AH31G, NNX14AC21G, NNX15AC89G), and NASA NExSS (NNX15AD95G), the University of California Office of the President (LFRP-118057), and the Science and Technology Facilities Council (ST/H002707/1). Portions of this work were performed under the auspices of the U.S. Department of Energy by Lawrence Livermore National Laboratory under Contract DE-AC52-07NA27344 and under contract with the California Institute of Technology/Jet Propulsion Laboratory funded by NASA through the Sagan Fellowship Program executed by the NASA Exoplanet Science Institute. This work is supported by the NASA Exoplanets Research Program (XRP) by cooperative agreement NNX16AD44G. Support for this work was provided by NASA through Hubble Fellowship grant 51378.01-A awarded by the Space Telescope Science Institute, which is operated by the Association of Universities for Research in Astronomy, Inc., for NASA, under contract NAS5-26555. This work benefited from NASAs Nexus for Exoplanet System Science (NExSS) research coordination network sponsored by NASAs Science Mission Directorate. This research has benefited from the SpeX Prism Library (and/or SpeX Prism Library Analysis Toolkit), maintained by Adam Burgasser at <http://www.browndwarfs.org/spexprism>, the IRTF Spectral Library, maintained by Michael Cushing, and the Montreal Brown Dwarf and Exoplanet Spectral Library, maintained by Jonathan Gagné.

Facility: Gemini South (GPI).

References

- Abil, O., Milli, J., Mawet, D., et al. 2013, *A&A*, 559, L12
- Allard, F., Hauschildt, P. H., Alexander, D. R., Tamanai, A., & Schweitzer, A. 2001, *ApJ*, 556, 357
- Allard, F., Homeier, D., & Freytag, B. 2012, *RSPTA*, 370, 2765
- Allers, K. N., & Liu, M. C. 2013, *ApJ*, 772, 79
- Augereau, J. C., Nelson, R. P., Lagrange, A. M., Papaloizou, J. C. B., & Mouillet, D. 2001, *A&A*, 370, 447
- Baraffe, I., Chabrier, G., Barman, T. S., Allard, F., & Hauschildt, P. H. 2003, *A&A*, 402, 701
- Baudino, J.-L., Bézard, B., Boccaletti, A., et al. 2015, *A&A*, 582, A83
- Bell, C. P. M., Mamajek, E. E., & Naylor, T. 2015, *MNRAS*, 454, 593
- Boccaletti, A., Lagrange, A.-M., Bonnefoy, M., Galicher, R., & Chauvin, G. 2013, *A&A*, 551, L14
- Bonnefoy, M., Boccaletti, A., Lagrange, A.-M., et al. 2013, *A&A*, 555, A107
- Bonnefoy, M., Lagrange, A.-M., Boccaletti, A., et al. 2011, *A&A*, 528, L15
- Bonnefoy, M., Marleau, G.-D., Galicher, R., et al. 2014, *A&A*, 567, L9
- Burgasser, A. J. 2014, in *Astronomical Society of India Conf. Ser.* 11, International Workshop on Stellar Spectral Libraries, ed. H. P. Singh, P. Prugniel, & I. Vauglin, 7
- Burgasser, A. J., Cruz, K. L., Cushing, M., et al. 2010, *ApJ*, 710, 1142
- Burgasser, A. J., Geballe, T. R., Leggett, S. K., Kirkpatrick, J. D., & Golimowski, D. A. 2006, *ApJ*, 637, 1067

- Burgasser, A. J., Lopez, M. A., Mamajek, E. E., et al. 2016, *ApJ*, 820, 32
- Burningham, B., Marley, M. S., Line, M. R., et al. 2017, arXiv:1701.01257
- Burrows, A., Saumon, D., Guillot, T., Hubbard, W. B., & Lunine, J. I. 1995, *Natur*, 375, 299
- Burrows, A., Sudarsky, D., & Hubeny, I. 2006, *ApJ*, 640, 1063
- Chabrier, G., Baraffe, I., Allard, F., & Hauschildt, P. 2000, *ApJ*, 542, 464
- Chauvin, G., Lagrange, A.-M., Beust, H., et al. 2012, *A&A*, 542, A41
- Chauvin, G., Lagrange, A.-M., Dumas, C., et al. 2005, *A&A*, 438, L25
- Chilcote, J. K., Barman, T., Fitzgerald, M. P., et al. 2015, *ApJL*, 798, L3
- Chilcote, J. K., Larkin, J. E., Maire, J., et al. 2012, *Proc. SPIE*, 8446, 84468W
- Crepp, J. R., Rice, E. L., Veicht, A., et al. 2015, *ApJL*, 798, L43
- Cruz, K. L., Kirkpatrick, J. D., & Burgasser, A. J. 2009, *AJ*, 137, 3345
- Currie, T., Burrows, A., Itoh, Y., et al. 2011, *ApJ*, 729, 128
- Currie, T., Burrows, A., Madhusudhan, N., et al. 2013, *ApJ*, 776, 15
- Cushing, M. C., Rayner, J. T., & Vacca, W. D. 2005, *ApJ*, 623, 1115
- Delorme, P., Gagné, J., Malo, L., et al. 2012, *A&A*, 548, A26
- Faherty, J. K., Rice, E. L., Cruz, K. L., Mamajek, E. E., & Núñez, A. 2013, *AJ*, 145, 2
- Faherty, J. K., Riedel, A. R., Cruz, K. L., et al. 2016, *ApJS*, 225, 10
- Filippazzo, J. C., Rice, E. L., Faherty, J., et al. 2015, *ApJ*, 810, 158
- Gagné, J., Faherty, J. K., Cruz, K. L., et al. 2015, *ApJS*, 219, 33
- Gagné, J., Lafrenière, D., Doyon, R., Malo, L., & Artigau, É. 2014, *ApJ*, 783, 121
- Golimowski, D. A., Ardila, D. R., Krist, J. E., et al. 2006, *AJ*, 131, 3109
- Graham, J. R., Macintosh, B., Doyon, R., et al. 2007, arXiv:0704.1454
- Gray, R. O., Corbally, C. J., Garrison, R. F., et al. 2006, *AJ*, 132, 161
- Heap, S. R., Lindler, D. J., Lanz, T. M., et al. 2000, *ApJ*, 539, 435
- Helling, C., Dehn, M., Woitke, P., & Hauschildt, P. H. 2008, *ApJL*, 675, L105
- Helling, C., & Woitke, P. 2006, *A&A*, 455, 325
- Hinkley, S., Pueyo, L., Faherty, J. K., et al. 2013, *ApJ*, 779, 153
- Hubeny, I., Burrows, A., & Sudarsky, D. 2003, *ApJ*, 594, 1011
- Ingraham, P., Marley, M. S., Saumon, D., et al. 2014, *ApJL*, 794, L15
- Kalas, P., Graham, J. R., Chiang, E., et al. 2008, *Sci*, 322, 1345
- Kalas, P., & Jewitt, D. 1995, *AJ*, 110, 794
- Kirkpatrick, J. D. 2005, *ARA&A*, 43, 195
- Kirkpatrick, J. D., Barman, T. S., Burgasser, A. J., et al. 2006, *ApJ*, 639, 1120
- Kirkpatrick, J. D., Cruz, K. L., Barman, T. S., et al. 2008, *ApJ*, 689, 1295
- Kirkpatrick, J. D., Looper, D. L., Burgasser, A. J., et al. 2010, *ApJS*, 190, 100
- Lafrenière, D., Jayawardhana, R., & van Kerkwijk, M. H. 2010, *ApJ*, 719, 497
- Lagrange, A.-M., Boccaletti, A., Milli, J., et al. 2012a, *A&A*, 542, A40
- Lagrange, A.-M., Boccaletti, A., Milli, J., et al. 2012b, *A&A*, 542, A40
- Lagrange, A.-M., Bonnefoy, M., Chauvin, G., et al. 2010, *Sci*, 329, 57
- Lagrange, A.-M., Gratadour, D., Chauvin, G., et al. 2009, *A&A*, 493, L21
- Larkin, J. E., Chilcote, J. K., Aliado, T., et al. 2014, *Proc. SPIE*, 9147, 91471K
- Leggett, S. K., Hawarden, T. G., Currie, M. J., et al. 2003, *MNRAS*, 345, 144
- Liu, M. C., Dupuy, T. J., & Allers, K. N. 2013, *AN*, 334, 85
- Liu, M. C., Dupuy, T. J., & Allers, K. N. 2016, *ApJ*, 833, 96
- Macintosh, B., Graham, J., Palmer, D., et al. 2006, *Proc. SPIE*, 6272, 62720L
- Macintosh, B., Graham, J. R., Barman, T., et al. 2015, *Sci*, 350, 64
- Macintosh, B., Graham, J. R., Ingraham, P., et al. 2014, *PNAS*, 111, 12661
- Maire, J., Ingraham, P. J., De Rosa, R. J., et al. 2014, *Proc. SPIE*, 9147, 914785
- Males, J. R., Cclose, L. M., Morzinski, K. M., et al. 2014, *ApJ*, 786, 32
- Marleau, G.-D., Klahr, H., Kuiper, R., & Mordasini, C. 2017, arXiv:1701.02747
- Marley, M. S., Fortney, J. J., Hubickyj, O., Bodenheimer, P., & Lissauer, J. J. 2007, *ApJ*, 655, 541
- Marois, C., Lafrenière, D., Doyon, R., Macintosh, B., & Nadeau, D. 2006, *ApJ*, 641, 556
- Marois, C., Macintosh, B., Barman, T., et al. 2008, *Sci*, 322, 1348
- Marois, C., Zuckerman, B., Konopacky, Q. M., Macintosh, B., & Barman, T. 2010, *Natur*, 468, 1080
- Mayor, M., & Queloz, D. 1995, *Natur*, 378, 355
- Millar-Blanchaer, M. A., Graham, J. R., Pueyo, L., et al. 2015, *ApJ*, 811, 18
- Morzinski, K. M., Males, J. R., Skemer, A. J., et al. 2015, *ApJ*, 815, 108
- Mouillet, D., Larwood, J. D., Papaloizou, J. C. B., & Lagrange, A. M. 1997, *MNRAS*, 292, 896
- Nielsen, E. L., Liu, M. C., Wahhaj, Z., et al. 2014, *ApJ*, 794, 158
- Oppenheimer, B. R., Baranec, C., Beichman, C., et al. 2013, *ApJ*, 768, 24
- Perrin, M. D., Maire, J., Ingraham, P., et al. 2014, *Proc. SPIE*, 9147, 91473J
- Pueyo, L. 2016, *ApJ*, 824, 117
- Quanz, S. P., Meyer, M. R., Kenworthy, M. A., et al. 2010, *ApJL*, 722, L49
- Rameau, J., Chauvin, G., Lagrange, A.-M., et al. 2013, *ApJL*, 772, L15
- Robert, J., Gagné, J., Artigau, É., et al. 2016, arXiv:1607.06117
- Schneider, A. C., Cushing, M. C., Kirkpatrick, J. D., et al. 2014, *AJ*, 147, 34
- Schneider, A. C., Windsor, J., Cushing, M. C., Kirkpatrick, J. D., & Wright, E. L. 2016, *ApJL*, 822, L1
- Smith, B. A., & Terrile, R. J. 1984, *Sci*, 226, 1421
- Soumer, R., Pueyo, L., & Larkin, J. 2012, *ApJL*, 755, L28
- Sparks, W. B., & Ford, H. C. 2002, *ApJ*, 578, 543
- Spiegel, D. S., & Burrows, A. 2012, *ApJ*, 745, 174
- Tokunaga, A. T., Simons, D. A., & Vacca, W. D. 2002, *PASP*, 114, 180
- van Leeuwen, F. 2007, *A&A*, 474, 653
- Wagner, K., Apai, D., Kasper, M., et al. 2016, *Sci*, 353, 673
- Wang, J. J., Graham, J. R., Pueyo, L., et al. 2016, *AJ*, 152, 97
- Wang, J. J., Rajan, A., Graham, J. R., et al. 2014, *Proc. SPIE*, 9147, 914755
- Woitke, P., & Helling, C. 2003, *A&A*, 399, 297