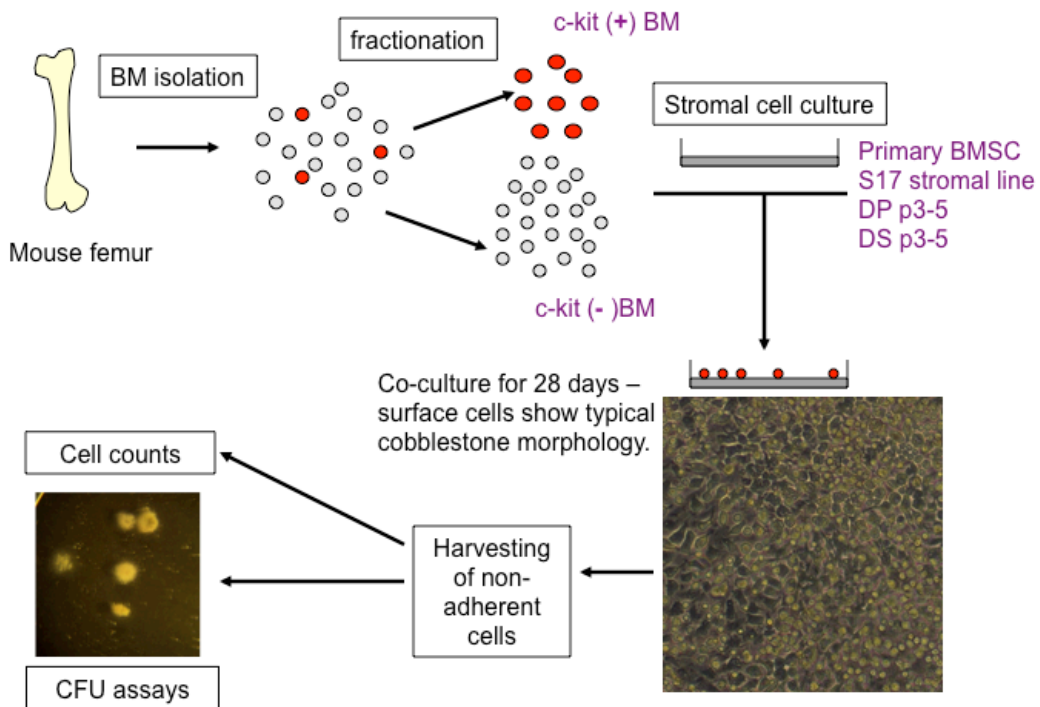
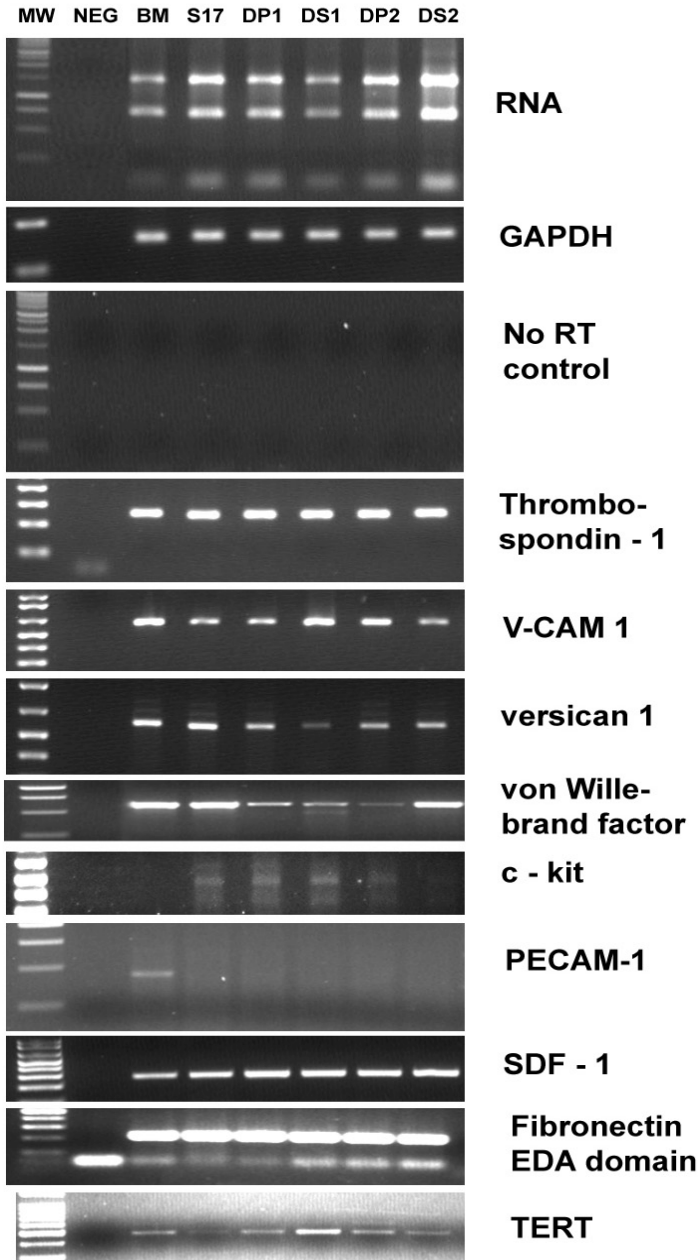


SUPPLEMENTARY MATERIAL – LIU et al.



S1 – Schematic showing the strategy used to compare the support of hair follicle dermal cells and bone marrow stromal cells for blood cells.



S2 RT-PCR demonstrates that important markers of the haematopoietic environment including, Thrombospondin-1, V-CAM 1 and SDF-1 are expressed in bone marrow stromal cells (BM), S-17 an immortalized stromal cell culture line, as well as hair follicle dermal papilla (DP) and dermal sheath (DS) cells (two strains shown).