

# ‘Upper-limit lensing’: constraining galaxy stellar masses with singly imaged background sources

Russell J. Smith,<sup>★</sup> John R. Lucey and William P. Collier

*Centre for Extragalactic Astronomy, University of Durham, Durham DH1 3LE, UK*

Accepted 2018 August 23. Received 2018 August 22; in original form 2018 July 13

## ABSTRACT

Strong gravitational lensing can provide accurate measurements of the stellar mass-to-light ratio  $\Upsilon$  in low-redshift ( $z \lesssim 0.05$ ) early-type galaxies, and hence probe for possible variations in the stellar initial mass function (IMF). However, true multiple imaging lens systems are rare, hindering the construction of large nearby lens samples. Here, we present a method to derive upper limits on  $\Upsilon$  in galaxies with single close-projected background sources, where no counter-image is detected, down to some relative flux limit. We present a proof-of-principle application to three galaxies with integral field observations from different instruments. In our first case study, only a weak constraint on  $\Upsilon$  is obtained. In the second, the absence of a detectable counter-image excludes stellar masses higher than expected for a Salpeter IMF. In the third system, the current observations do not yield a useful limit, but our analysis indicates that deeper observations should reveal a counter-image if the stellar mass is any larger than expected for a Milky Way IMF. We discuss how our method can help enlarge the current samples of low-redshift galaxies with lensing constraints, both by adding upper limits on  $\Upsilon$  and by guiding follow-up of promising single-image systems in search of fainter counter-images.

**Key words:** gravitational lensing: strong – galaxies: elliptical and lenticular, cD.

## 1 INTRODUCTION

Strong gravitational lensing can be exploited on galaxy scales to provide robust measurements of total projected mass within a characteristic aperture, with uncertainties of only a few per cent (e.g. Treu 2010). If the relative contributions of dark matter (DM) and stars can be estimated, e.g. using additional information from stellar dynamics, then the stellar mass-to-light ratio  $\Upsilon$  can be determined, which in turn constrains the stellar initial mass function (IMF). Applications of this method to lenses at redshift  $z = 0.2$  provided some of the first evidence for ‘heavy’ IMFs in elliptical galaxies (Treu et al. 2010), with a factor of  $\sim 2$  mass excess, compared to Milky-Way-like IMFs, for the most massive objects (velocity dispersions  $\sigma \gtrsim 300 \text{ km s}^{-1}$ ).

In recent work, we have developed the use of lenses at lower redshifts ( $z \lesssim 0.05$ ) as an especially robust probe of the IMF, minimizing the uncertainties associated with the DM component (Smith & Lucey 2013). This advantage arises because the critical surface density  $\Sigma_{\text{cr}}$  (in  $M_{\odot} \text{ pc}^{-2}$ ) scales inversely with the lens distance (assuming distant sources), so that low-redshift lensing can occur only in the high-density central parts of galaxies, where stars dominate the total mass. In this case, the stellar mass-to-light ratio  $\Upsilon$

can be estimated from a ‘pure’ lensing analysis, without using any dynamical information. From four systems studied in detail to date, with  $\sigma \approx 300 \text{ km s}^{-1}$ , Collier, Smith & Lucey (2018) concluded that  $\Upsilon$  is on average only  $9 \pm 8$  per cent heavier than expected from a Kroupa (2001) IMF. This result differs strikingly from the distant lensing analysis, and is also in tension with results from pure stellar dynamics (Cappellari et al. 2013) and spectroscopic limits on low-mass stars (Conroy & van Dokkum 2012).

As the small sample size in Collier et al. (2018) suggests, identifying nearby lenses is challenging. The number of potential lenses is limited by the small volume available at low redshift, and the intrinsic rarity of high-mass galaxies. The number of nearby galaxies with *bright* lensed background objects, recognizable as such from broad-band imaging, is prohibitively small. Instead, we have developed a strategy using integral field unit (IFU) spectroscopy to detect multiply imaged line-emission from faint sources behind selected nearby galaxies. Our method was first applied in the SNELLS (SINFONI Nearby Elliptical Lens Locator Survey) programme (Smith, Lucey & Conroy 2015), and later adapted to optical data from the MUSE (Multi-Unit Spectroscopic Explorer) instrument (Collier et al. 2018), leading to the sample of four multiple-imaging lenses described above, as well as a number of close-projected background emitters without any identifiable lensed counter-image.

The new generation of multi-IFU galaxy surveys offers a promising new route to augmenting the nearby lens sample. The ongoing

<sup>★</sup> E-mail: russell.smith@durham.ac.uk

SAMI (Sydney-AAO Multi-object Integral field spectrograph) survey (Bryant et al. 2015) and SDSS-IV MaNGA (Mapping Nearby Galaxies at Apache Point; Bundy et al. 2015) are observing thousands of low-redshift galaxies, including hundreds that are massive enough potentially to act as strong lenses. Talbot et al. (2018) recently identified 40 background emission-line sources behind MaNGA target galaxies. In most of these systems, only a single image of the background source is detected in the MaNGA data-cube,<sup>1</sup> but future follow-up observations could detect counter-images to establish more of these systems as low-redshift lenses.

In this paper, motivated by the difficulty of finding multiple-imaging lenses at low redshift, we consider whether useful lensing information can be inferred in the cases noted above where only a *single* (and unresolved) image of a background source is detected in close projection. As a crude argument (neglecting detection thresholds, external shear, ellipticity, etc) consider a background emitter observed at a projected separation  $r_{\text{em}}$  from the lens candidate. Lensed counter-images should be formed for any image projected within twice the Einstein radius,  $R_{\text{Ein}}$ . Hence if *no* counter-image is present,  $0.5 r_{\text{em}}$  must be larger than the Einstein radius, and therefore enclose a mean surface density that is smaller than the critical value, i.e.  $\langle \Sigma \rangle_{0.5r_{\text{em}}} < \Sigma_{\text{cr}}$ . The critical surface density  $\Sigma_{\text{cr}}$  depends only on the foreground and background redshifts, which are known (in the case of IFU lens searches). Hence if the lensing mass is dominated by stars, so that a mass-follows-light model is applicable, this calculation yields an upper limit to the stellar mass-to-light ratio  $\Upsilon$ .

An alternative, pixel-based, method for exploiting singly imaged systems was described by Shu et al. (2015), and applied to mainly more distant galaxies from the SLACS (Sloan Lens Advanced Camera for Surveys) project. As we discuss later in this paper, while Shu et al.'s goals are similar to ours, their implementation is quite different, and not well suited to the systems discussed here, where the lensed images are unresolved.

The remainder of this paper expands on the simplified argument above, taking into account some of the complicating factors already noted. In Section 2, we present a more general treatment of a circular ‘toy model’, illustrating the effect of a finite detection threshold, such that only sufficiently bright counter-images are detectable, and the impact of the unknown external contributions to the lensing deflections, modelled as a quadrupole shear. In Section 3, we illustrate the method with application to three observed galaxies (accounting now also for the lens ellipticity), drawn from different data sources, which exemplify the range of results that can be obtained. We show that in favourable cases, useful upper limits to  $\Upsilon$  can be obtained, which in principle provide further information on the IMF mass excess factor in elliptical galaxies. In other cases, our method provides a framework to guide future observations, with the goal of either establishing new multiply imaged systems or else placing tighter upper limits on  $\Upsilon$  from single images. Section 4 summarizes the results and discusses the prospects for using ‘upper-limit lensing’ to derive statistical results for larger samples from current and future surveys.

<sup>1</sup>Talbot et al. (2018) report multiple imaging for nine background emitters based on pseudo-narrow-band images from the pipeline datacubes. We have independently analysed the data for these systems, using the method of Smith (2017), which was developed to avoid artefacts near galaxy centres caused by the cube reconstruction process. With this analysis, only two of the Talbot et al. (2018) systems show possible evidence for multiple imaging: SDSSJ170124.01+372258.09 (as reported in Smith 2017) and SDSSJ143607.49+494313.22, both at  $z_{\text{lens}} \sim 0.12$ .

Where necessary, we adopt a cosmology with parameters ( $h, \Omega_{\text{M}}, \Omega_{\Lambda}$ ) = (0.696, 0.286, 0.714; Bennett et al. 2014). If we had instead adopted the Planck Collaboration XIII (2016) parameters, with  $h = 0.678$ , all determinations of  $\Upsilon$  would be reduced by 2.5 per cent.

## 2 METHOD

In this section, we present a brief summary of how upper-limit lensing can be used to extract information about the stellar mass-to-light ratios in early-type galaxies. We describe the method as implemented for the real galaxies in Section 3, and illustrate it by application to a simple circular toy model.

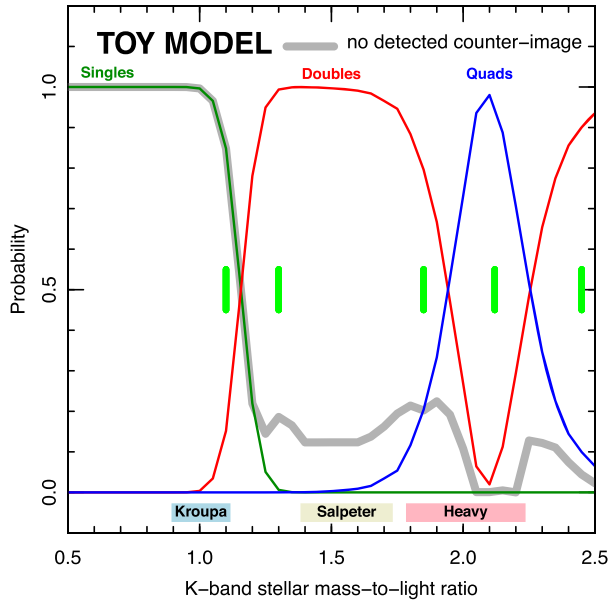
Our key assumption is that the lensing mass is dominated by the stellar component of the foreground galaxy, and that this can be adequately described using a constant stellar mass-to-light ratio  $\Upsilon$ . While DM is evidently not negligible in many lensing situations (e.g. cluster lenses, or distant lenses with Einstein rings far larger than the effective radius), it should be a reasonable assumption for low-redshift galaxies where  $R_{\text{Ein}} \lesssim 0.5 R_{\text{eff}}$ , as in the cases presented in Section 3. For example, Smith et al. (2015) estimated contributions of  $\lesssim 20$  per cent from cosmological simulations. A constant *stellar* mass-to-light ratio has been assumed in most dynamical and lensing studies, although some recent works suggest a trend of increasing  $\Upsilon$  towards galaxy centres, possibly related to IMF gradients (Oldham & Auger 2018; Sonnenfeld et al. 2018).

For the present analysis, we represent the stellar mass component with an elliptical  $R^{1/4}$ -law profile in the lensing model, but a more flexible profile could be adopted. DM is assumed to make only a small contribution to the lensing deflection within the radius probed by the emitter. To the extent that this is true, the difference in distribution of the DM, compared to that of the stars, is unlikely to affect the configuration significantly. In this case, any DM contribution simply inflates the derived (upper) limit on  $\Upsilon$ . An explicit DM halo, e.g. with a Navarro, Frenk & White (1996) profile, could be included in the calculation in principle.

The lensing configuration will be affected by the external mass distribution, which can be represented to first order by a quadrupole ‘shear’ term, parametrized by an amplitude,  $\gamma$ , and angle,  $\theta$ . For a given observed position and lens mass, the background galaxy may be singly imaged for some shear amplitudes and orientations, but multiply imaged for others. Since  $\gamma$  and  $\theta$  are unknown, the shear introduces a probabilistic element into the calculation, and the analysis must sample and marginalize over the likely range of values.

With the above assumptions, for given parameters of the foreground galaxy (redshift, effective radius, ellipticity, position angle, luminosity within some calibration aperture) and of the background source (redshift and position of the observed emitter, relative to the lens), we can generate a large set of lens models, exploring the  $(\Upsilon, \gamma, \theta)$  parameter space. We use the GRAVLENS code of Keeton (2001) to solve the lens equation for each model in this grid, all conditioned on the position of one observed image (the ‘test image’) of the background object. For each  $(\Upsilon, \gamma, \theta)$ , we compute the position of the background galaxy in the source plane, and locate any corresponding counter-images in the image plane.

It is important to distinguish between *intrinsically* singly imaged systems, and those that *appear* single because any counter-images are fainter than the observational flux limit. We define this threshold,  $f_{\text{lim}}$ , relative to the test image, and apply it to the relative image magnifications predicted by the lens model. This is valid if the background source is small compared to variations in the magnification



**Figure 1.** Upper-limit lensing constraints on the mass-to-light ratio, for the toy-model case in Section 2. Here, the mass profile is a circular  $R^{1/4}$ -law profile, and we assume one image of the background galaxy (the ‘test image’) has been detected at a projected separation half of the effective radius. Green, red, and blue lines show the fraction of *intrinsically* single-, double-, and quadruple-image configurations, for fixed observed location of the ‘test image’, as a function of the stellar mass-to-light ratio  $\Upsilon$ . The heavy grey line shows the probability of *not* observing any lensed counter-image, to a flux limit of one quarter that of the test image, i.e.  $f_{\text{lim}} = 0.25$ . The difference between green and grey lines is attributable to multiple image systems (mainly doubles) with counter-images falling below this limit. The green vertical bars show the values of  $\Upsilon$  selected in Fig. 2, corresponding to different regimes in typical multiplicity. The horizontal scaling is arbitrary for this synthetic example, but set to be similar to the observed cases shown in subsequent figures. Below, we indicate the range in  $\Upsilon$  spanned by old-metal-rich populations with a Milky-Way-like IMF, a Salpeter IMF ( $\times 1.55$  higher in  $\Upsilon$ ), and a ‘heavy’ IMF ( $\times 2$  higher).

map, but becomes unreliable close to the caustics, so we impose a cap of 20 on the absolute magnifications to suppress unrealistic flux ratios. Additionally, we include the size and orientation of the instrument field of view so that any ‘outer’ counter-images lost from the field are properly accounted for.

The remainder of the calculation simply summarizes the image positions and fluxes from the model grid. At each  $(\Upsilon, \gamma)$  pair, we determine the fraction of  $\theta$  values yielding no *detectable* counter-images,  $F_N(\Upsilon, \gamma)$ . Then, by marginalizing over  $\gamma$ , we compute the probability of observing no counter-image down to the imposed relative flux limit:  $U(\Upsilon) = \int F_N(\Upsilon, \gamma) P(\gamma) d\gamma$ . Here,  $P(\gamma)$  is the probability distribution for the shear amplitude, which can be written as a 2D-Maxwellian distribution, i.e.  $P(\gamma) d\gamma \propto \gamma e^{-\gamma^2/(2s^2)}$ , where  $s$  is the rms for each Cartesian component of the shear vector.

As a concrete example, Fig. 1 shows the results derived for a circular toy model, where we posit a test image at half the effective radius,  $0.5 R_{\text{eff}}$ , of the  $R^{-1/4}$ -law surface density profile. This represents the position of the observed background emitter in the image plane. The normalization of the lensing mass is set by the free parameter,  $\Upsilon$ , and by a calibrating aperture luminosity; this luminosity is arbitrary for our toy model example, but chosen to yield results

for  $\Upsilon$  that are similar to those of the real galaxies described in the following section. For this example, we assume that no counter-image is detected down to a flux of  $f_{\text{lim}} = 0.25$  relative to the test image. Again, this is similar to the values for the observed galaxies. The grid of lensing models explored spans ranges  $\Upsilon = 0.5\text{--}3.0$  (step 0.05),  $\gamma = 0.00\text{--}0.20$  (step 0.02), and  $\theta = 0^\circ\text{--}180^\circ$  (step  $5^\circ$ ). In marginalizing over the shear amplitude, we assume  $s = 0.05$  i.e. an rms of 5 per cent in each component, which is similar to the average derived from mass-follows-light + shear models of Grade A lenses in Bolton et al. (2008). Some example lensing configurations from the model grid are shown in Fig. 2.

As expected, the likely intrinsic multiplicity of the system depends strongly on  $\Upsilon$ , with several regimes being identifiable. At low  $\Upsilon$  ( $< 1.15$ ), intrinsically single images predominate, while double-image configurations<sup>2</sup> are more likely at higher  $\Upsilon$ . Another transition occurs where quadruply imaged systems become more likely than doubles (at  $\Upsilon = 1.95$ ). Doubles again become dominant at  $\Upsilon > 2.25$ . The  $\Upsilon$  ranges spanned by these regimes will in general depend on a combination of mass normalization and projected separation of the background galaxy, while the sharpness of the transitions between them depends on the assumed shear rms.

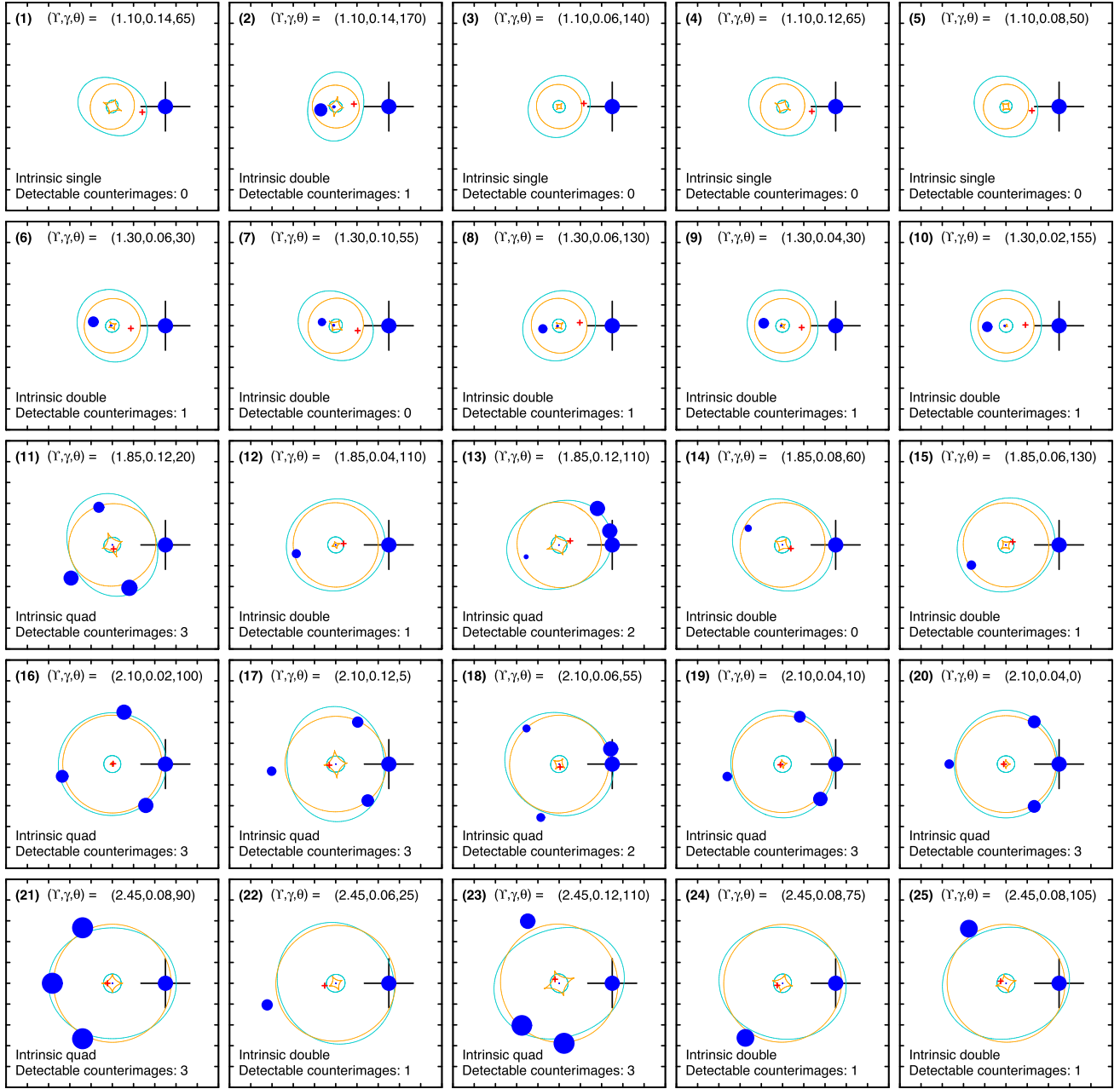
In the intrinsically double configurations with  $1 < \Upsilon < 2$ , the test image is the outer, generally brighter, of the pair. The counter-image is closer to the lens galaxy centre and is usually fainter, so that it may fall below the relative flux threshold (e.g. Panel 7 of Fig. 2). Hence in practice,  $U(\Upsilon)$  falls off less rapidly than the fraction of true singles, the difference being attributable to faint counter-images.<sup>3</sup> Quadruply imaged systems generally have less disparate flux ratios, so  $U$  falls quickly to zero in the quad-dominated regime.<sup>4</sup> In our example case, where the mass profile is circular, and the shear rms is small, quads predominate in only a narrow range of  $\Upsilon$ ; more elliptical and/or sheared models generate quads more efficiently. In the intrinsically double configurations with  $\Upsilon > 2$ , the test emitter is the inner image of the source, which is usually the fainter of the pair; hence in these systems the counter-image is unlikely to fall below the detection limit (e.g. Panel 25 of Fig. 2).

If the results in Fig. 1 were obtained for a real galaxy, we would conclude that observing no counter-image in this system would be somewhat unlikely ( $< 20$  per cent) for mass-to-light ratios larger than  $\Upsilon \approx 1.3$ . Deeper ‘observations’ would help to strengthen this statement, by ruling out the  $1.3 < \Upsilon < 2.0$  models with fainter counter-images.

<sup>2</sup>Strictly, because our lensing model does not diverge at the origin, these configurations have a third, highly demagnified, central image. We formally include these ‘Fermat-maximum’ images in the calculation, but they do not affect the results as they are rarely if ever above the flux limit, and never the *only* observable counter-image.

<sup>3</sup>If a DM halo is present, with an inner density profile *shallower* than that of the stars (e.g. Navarro et al. 1996), then these inner counter-images have slightly *higher* relative flux; hence  $U(\Upsilon)$  is conservatively overestimated by neglecting the DM.

<sup>4</sup>We note however that marginal ‘fold’ quads present a problem for our point-image-based analysis: in these configurations, the brightest of three counter-images is formed very close to the test image, and the two may be blended and indistinguishable in the observations (e.g. Panel 18 of Fig. 2). A future refinement of the method could account for the image PSF, but the identification of such cases as lenses will also depend on the intrinsic source structure, so this is only a partial solution.



**Figure 2.** Example image configurations for the circular toy-model case. The fixed ‘test image’ position (representing the detected image of the background galaxy) is at half the effective radius of the mass distribution, and indicated by the blue circle with cross hairs. Lensed counter-images are shown by other blue points, with size proportional to their magnification, relative to the test image. The orange and cyan lines show lensing caustic and critical curves, respectively, the red cross indicates the undeflected source position. Each row shows five cases for a given value of  $\Upsilon$  (these values are indicated in Fig. 1). The shear amplitude  $\gamma$  and orientation  $\theta$  are randomly drawn to illustrate the scatter introduced by these unknown parameters. In each panel, we note the *intrinsic* multiplicity (ignoring ‘central’, i.e. Fermat-maximum, images), and also the number of *detectable* counter-images, defined as having  $>25$  per cent the flux of the test image.

### 3 EXAMPLE APPLICATIONS

In this section, we present a proof-of-principle implementation of our technique to three observed cases of single close-projected emitters behind massive early-type galaxies at  $z \lesssim 0.05$ . Although the systems are drawn from three different IFU datasets (SNELLS, MUSE, and MaNGA), we exploit uniform imaging survey data to keep the analysis as consistent as possible.

For applying the upper-limit lensing method, as currently implemented, the necessary inputs are as follows.

- (i) The redshifts of the foreground and background galaxy (for the distances entering  $\Sigma_{\text{cr}}$  in the lensing calculations), and the position of the observed background emitter relative to the foreground galaxy. These parameters are derived from the IFU data.
- (ii) The effective radius, position angle, ellipticity, and flux normalization (defining the lensing potential, up to an unknown factor

of  $\Upsilon$ ). These are obtained from fits to broad-band images. The flux normalization is defined in  $K$  band from 2MASS (Skrutskie et al. 2006) to minimize sensitivity to age effects when comparing to the expected values for candidate IMFs. We use an aperture of 5 arcsec radius, and include a (small) correction for the point spread function (PSF). For the effective radius, position angle, and ellipticity, we use GALFIT (Peng et al. 2010)  $R^{1/4}$ -law fits to  $y$ -band images from the Pan-STARRS (PS1) survey (Chambers et al. 2016). This profile is a good fit to the galaxies analysed here.

(iii) An upper limit on the flux of any counter-image, relative to the observed image. This is obtained by adding fake sources to the residual emission-line image derived from the IFU data and visually estimating the minimum flux at which an inner counter-image can be securely identified.

(iv) The definition of the model grid and assumed shear rms. These are set as in Section 2, except where specified below.

The relevant observational parameters for the three galaxies are summarized in Table 1.

Because the normalization of the lensing model is applied through the  $K$ -band luminosity, all values of  $\Upsilon$  refer to this band. The limits on  $\Upsilon$  can be interpreted relative to the expectations for different choices of the IMF. Ideally, this would take into account the metallicity and star formation history of each galaxy, as determined from high signal-to-noise spectroscopy (e.g. Newman et al. 2017), but such data are not available for all of the objects discussed here. Instead, we simply compare to a plausible range in the expected ‘reference’ stellar mass-to-light ratio  $\Upsilon_{\text{ref}}$ , assuming that the stars are old and metal rich, as typical in massive ellipticals. Specifically, from the Maraston (2005) models, populations with metallicity  $1-2Z_{\odot}$  and ages 10–13 Gyr (formation epoch  $z \gtrsim 2$ ) have  $K$ -band ratios  $0.89 < \Upsilon_{\text{ref}} < 1.12$ , for a Kroupa (2001) IMF. The limits on  $\Upsilon$  can then be posed in terms of the mass-excess factor  $\alpha = \Upsilon/\Upsilon_{\text{ref}}$ , such that a Milky-Way-like IMF has  $\alpha = 1.0$ , an unbroken Salpeter (1955) IMF has  $\alpha = 1.55$ , and we define a ‘heavy’ IMF as  $\alpha = 2.0$ .

### 3.1 Case 1: SNL-4 from SNELLS

The first case we consider is a previously unreported single-image system from the SNELLS programme. In Smith et al. (2015), we identified three multiple-image systems, and one close single-image background galaxy. The latter is unsuitable for our current analysis as it has a strong dust lane. In subsequent campaigns, we observed 26 further candidate lens galaxies, using essentially the same observing strategy. As before, targets were drawn from the 6dFGSv (Campbell et al. 2014) and SDSS (Abazajian et al. 2009) surveys, selecting for high-velocity dispersion  $\sigma \gtrsim 300 \text{ km s}^{-1}$  and low redshift ( $z < 0.065$ ). Cluster members and central galaxies of rich groups were excluded to minimize DM halo contributions. No new multiply imaged emitters were discovered from these observations, but one further close-projected background galaxy was identified, with unambiguous  $z = 1.38$  [O III] emission detected behind the  $z = 0.037$  target 2MASX J04431291–1542101, hereafter SNL-4.

The SINFONI data for SNL-4 are shown in the first row of Fig. 3. Adding fake sources (with the appropriate PSF) to the narrow-band emission-line image, we estimate a relative flux limit of  $f_{\text{lim}} = 0.4$ . (Note that this estimate must be made in the image domain, and is hence larger than a naive estimation from the significance of the line in the spectrum.) The SNELLS data only cover two offset  $8 \times 8 \text{ arcsec}^2$  fields, so some models in the  $(\Upsilon, \gamma, \theta)$  grid produce unobserved counter-images falling outside the field of view.

The results for SNL-4 are shown in Fig. 4. The *intrinsic* multiplicity curves are similar to those in the toy model case, except that the quad-dominated regime spans a wider range in  $\Upsilon$ . This difference is attributable to the high ellipticity of the foreground galaxy, which enlarges the inner caustic enclosing quadruply imaged sources. However, the *apparent*-singles curve  $U(\Upsilon)$ , which accounts for the detectability of the counter-image, is quite different than for the toy model: for SNL-4, only the quadruple systems would be identified as lenses at the SNELLS depth. The counter-images in double systems would be too faint to detect at any  $\Upsilon$ . This is partly due to the faintness of the test image itself, and correspondingly high value of  $f_{\text{lim}}$ , and partly due to the system geometry; the high ellipticity of the foreground galaxy, and the alignment of the source along its major axis, tends to increase the flux ratio between the two images, producing a relatively demagnified counter-image. The limit we infer on the mass-to-light ratio for SNL-4 is  $\Upsilon < 1.85$ , defined by the point where the probability of observing no counter-image falls below 0.1. The limited SNELLS field of view prevents detection of the widest doubles at large  $\Upsilon$ , hence  $U(\Upsilon)$  rises above 0.1 again for  $\Upsilon > 2.3$ , though such high values might be considered implausible a priori.

Hence, we conclude that the absence of counter-image in SNL-4 is fully compatible with either a Milky-Way-like or a Salpeter IMF. A correction for a  $\sim 20$  per cent DM contribution inside the region studied would not qualitatively change this statement. The results for this galaxy are limited largely by the difficulty of recovering faint counter-images in doubly imaged configurations. Much deeper observations would be necessary to derive useful limits on the IMF for this galaxy. (Fig. 4 shows a comparison case for  $f_{\text{lim}} = 0.1$ , which would still not be sensitive enough to detect many of the faint doubles.)

### 3.2 Case 2: PGC007748 from MUSE

The second system is a close-projected emitter discovered in our systematic search for nearby lenses in public archival MUSE observations (Collier et al. 2018, and in preparation). The foreground galaxy is PGC007748 (2MASX J02021739–0107405), which is the central galaxy of Abell 295, a poor cluster with X-ray mass  $M_{200} = 6 \times 10^{13} M_{\odot}$  (Piffaretti et al. 2011) and velocity dispersion  $\sigma_{\text{cl}} = 359^{+52}_{-32} \text{ km s}^{-1}$  (Fadda et al. 1996). This target was observed as part of the MUSE Most Massive Galaxies project (094.B-0592, PI: Emsellem), with a total exposure time of 1.6 h and seeing  $\sim 0.8 \text{ arcsec}$  full width at half-maximum (FWHM). Our processing follows the scheme described in Collier et al. (2018), starting from the Phase 3 MUSE-DEEP datacube released by ESO.

Two apparently distinct emission-line sources were identified at a common redshift of  $z = 0.830$ , at distances of 3.6 and 5.5 arcsec from the galaxy centre. The inner feature is not seen in *Hubble Space Telescope* continuum imaging (500 s *F814W* WFPC2) from Laine et al. (2003), while the outer one is barely visible there. The two emission sources have very different spectra, with the inner one bright in [O III], while the outer feature has strong [O II] but is much fainter in [O III] (seen at top of frame in Fig. 3). Considering this difference, as well as the spatial configuration (both sources on the same side of the target galaxy), we interpret the system as two separate singly imaged objects at the same redshift (the line centres differ by  $< 50 \text{ km s}^{-1}$ ). Here, we use only the inner image to derive stellar mass constraints for PGC007748.

In calculating the lensing model grid, we adopt a relative flux limit of  $f_{\text{lim}} = 0.08$ , estimated by adding fake sources to the emission-line image. All counter-images are formed within the large field of view

**Table 1.** Relevant parameters of the systems analysed in Section 3. The velocity dispersion  $\sigma_{6dF/SDSS}$  is from Campbell et al. (2014) or Abazajian et al. (2009).

Short ID	SNL-4	PGC007748	J0728+4005	
2MASS ID (2MASX...)	J04431291–1542101	J02021739–0107405	J07281702+4005025	
IFU data source	SNELLS	MUSE	MaNGA	
$z_{\text{lens}}$	0.037	0.043	0.050	
$z_{\text{src}}$	1.38	0.830	0.954	
$\sigma_{6dF/SDSS}$	$304 \pm 16$	$254 \pm 6$	$268 \pm 6$	$\text{km s}^{-1}$
$R_{\text{eff}}$	3.8	11.6	5.4	Effective radius (arcsec)
PA	−52.8	+72.8	+69.6	deg E of N
$e$	0.38	0.20	0.21	Ellipticity $1-b/a$
$L_{\text{ap}}$	17.6	18.9	20.6	$K$ band; $R_{\text{ap}} = 5$ arcsec ( $10^{10} L_{\odot}$ )
$D_{\text{A}}$	152.6	175.9	201.4	Ang. size distance of lens (Mpc)
$\Sigma_{\text{cr}}$	11.34	10.09	8.778	Crit. surf. density ( $10^3 M_{\odot} \text{pc}^{-2}$ )
$r_{\text{em}}$	4.25	3.64	3.16	Emitter separation (arcsec)
PA <sub>em</sub>	−36.0	−77.6	−53.2	Emitter angle (deg E of N)
$f_{\text{lim}}$	0.4	0.08	0.4	Relative flux limit for counter-image

of MUSE (1 arcmin). Given that this object may reside in a more massive halo, we explore two choices for the external shear rms: the default case, with  $s = 0.05$ , and a high-shear case, with  $s = 0.10$ . As expected, the latter assumption leads to a greater blurring between the single, double, and quad regimes.

The results are shown in Fig. 5. The mass-to-light ratio constraint is much stronger than for the case of SNL-4, due to the bright background source and to the more circular mass distribution that favours relatively brighter counter-images. For  $s = 0.05$ , the probability of not detecting a counter-image falls below 0.1 at  $\Upsilon \approx 1.4$ ; the constraint is only marginally weaker in the high-shear calculation. Unlike the SNL-4 case, there is no rise in  $U(\Upsilon)$  at large  $\Upsilon$ , due to the large field of view. Comparing to the expected values for old stellar populations, this result disfavors a Salpeter IMF (or other IMF with similarly high mass-to-light ratio). Correcting for DM contributions would lead to an even smaller maximum  $\Upsilon$ . We note that deeper observations would not significantly alter the results for this system, since the existing data can already detect the predicted counter-images for almost all of the intrinsically multiple models in the grid.

### 3.3 Case 3: J0728+4005 from MaNGA

Our final application is to one of the single-image systems from the MaNGA survey, reported by Talbot et al. (2018). Among this sample, J0728+4005 (2MASX J07281702+4005025) is the most suitable candidate for our method, because the background emitter is projected at very small separation (3.2 arcsec), and the velocity dispersion of the foreground galaxy is relatively large ( $\sigma = 268 \text{ km s}^{-1}$ ). J0728+4005 does not appear to be part of any substantial group or cluster.

To establish the relative flux limit, we constructed a narrow-band image centred on the [O II] line, using the method described in Smith (2017). The key difference compared to the approach of Talbot et al. (2018) is that we remove the galaxy continuum signal from each fibre individually *prior* to reconstructing a residual data-cube, which produces a much cleaner residual image, especially close to the centre of the foreground galaxy. Adding fake sources with the MaNGA PSF (2 arcsec FWHM), we estimate a relative flux limit for counter-image detection of  $f_{\text{lim}} = 0.4$ . The MaNGA fibre bundle used for this galaxy has a field-of-view diameter  $\sim 20$  arcsec, which

is sufficient to cover all counter-images generated in the lensing models.

The results for J0728 are shown in Fig. 6. The absence of a detectable counter-image in the MaNGA data places only weak constraints on  $\Upsilon$ ; only very high masses ( $\Upsilon > 2.2$ ) and a narrow interval in the quad-dominated regime ( $\Upsilon \approx 1.7$ ) are excluded. Hence little can be concluded about the IMF in this galaxy from the MaNGA data alone.

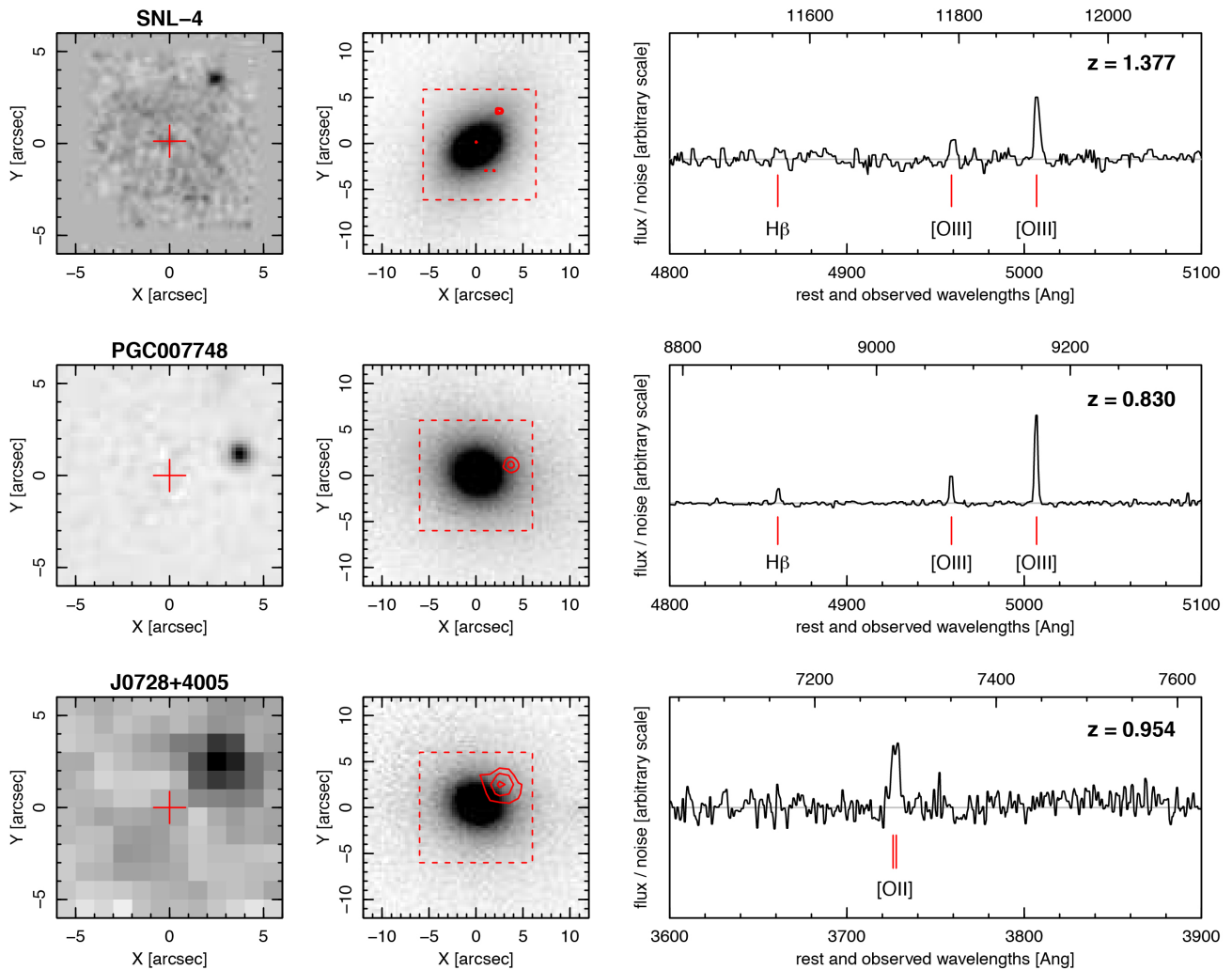
On the other hand, our analysis shows that J0728+4005 is an inherently powerful system deserving further study, due to the high luminosity of the foreground galaxy, and the small projected separation of the background emitter. Moreover, this target does not suffer the combination of high ellipticity and alignment of the background source with the lens major axis, which causes de-magnification of any counter-images in SNL-4. Hence in Fig. 6, we also show  $U(\Upsilon)$  calculated for a possible future observation with  $f_{\text{lim}} = 0.1$ , which could be undertaken for example with the Gemini GMOS IFU. This sensitivity gain is a realistic goal, given the increase in telescope size and achievable angular resolution compared to MaNGA.

With the assumptions of the deeper observation, essentially all doubles with inner counter-images should be detectable, so  $U(\Upsilon)$  falls below 0.1 at  $\Upsilon \approx 0.9$ . This test shows that deeper observations should recover a counter-image to the background source for any model where the IMF is heavier than that of the Milky Way, adding a new low-redshift lens to the small sample currently in hand. Conversely, failure to detect the counter-image would be clear evidence for a ‘lightweight’ (i.e. Milky-Way-like) IMF in this galaxy, even assuming negligible DM contributions.

## 4 DISCUSSION AND SUMMARY

We have described a new method to derive limits on the stellar mass-to-light ratios in galaxies with single close-projected background sources, and presented a proof-of-principle application to three galaxies from different IFU data sources.

Our approach is most suitable for application to IFU observations of massive field galaxies, because in this case: (a) the redshifts of both the foreground and background galaxy are known, and hence so is the critical density for lensing,  $\Sigma_{\text{cr}}$ ; (b) the lensing convergence  $\kappa = \Sigma/\Sigma_{\text{cr}}$  is likely to be dominated by the stellar mass of the foreground galaxy, and hence is known from observations except for a factor representing the stellar mass-to-light ratio,  $\Upsilon$ ; and (c) the



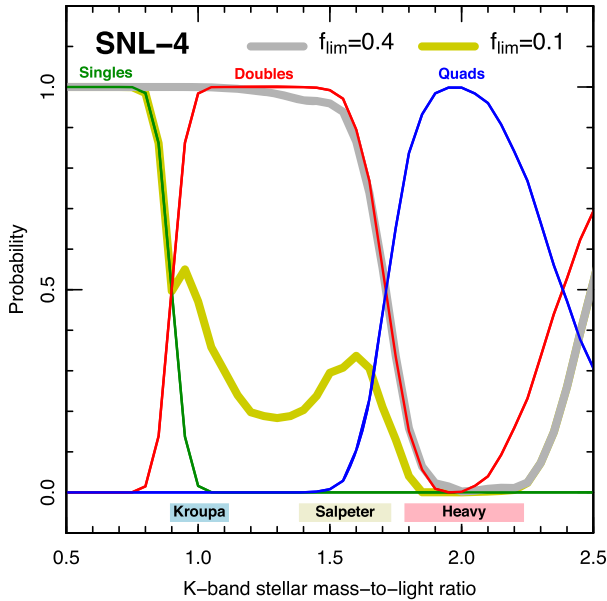
**Figure 3.** IFU observations of the three single-image systems analysed in this paper. For SNL-4, we show SINFONI data from the SNELLS project. For P007748, the data are from archival MUSE observations. For J0728+4005, we use MaNGA data re-processed according to the methods of Smith (2017). In each row, the left-hand panel shows a narrow-band image extracted around the brightest line from the background emitter. The second panel shows the PS1 y-band continuum image, with the emission line map overlaid as contours (the dashed outline indicates the box size in the left-hand panel). The right-hand panel shows the residual spectrum extracted at the position of the line emitter and showing the brightest lines in each case.

IFU allows for fairly unambiguous identification of faint counter-images, even close to the centre of the target galaxy, through the spectral contrast advantage of narrow emission lines.

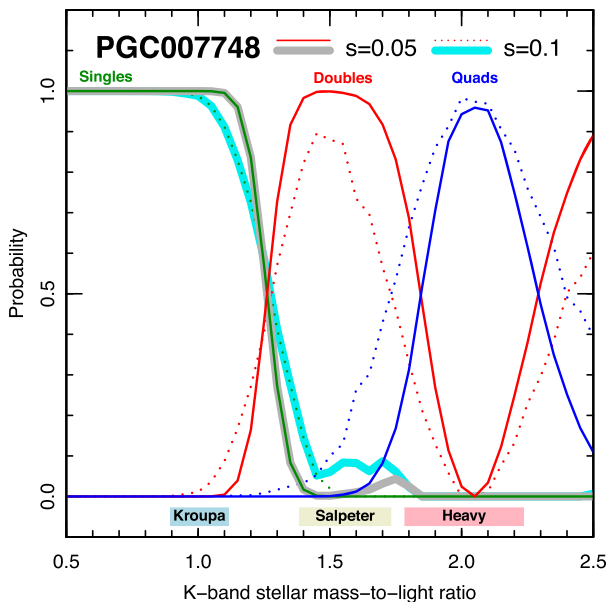
We note here that Shu et al. (2015) have previously described an analysis of SLACS ‘grade-C’ systems, i.e. those with no identifiable counter-images, with the aim of deriving constraints from singly imaged background sources. Their method is based on pixel-based fitting to residual (lens-subtracted) images, assuming a Sersic-profile source, with the lens treated as a singular isothermal ellipse, parametrized by the normalization  $b_{\text{SIE}}$ . This approach can be effective where the background image shows distinct curvature around the foreground galaxy, which can be unambiguously attributed to lensing (e.g. SDSSJ0847+2925, SDSSJ1446+4943 from their figures A1–A2). In other cases, however, the pixelized method may be susceptible to overfitting of the intrinsic source structure, or residuals from subtracting the foreground galaxy. For example, in around half of their grade-C systems (e.g. SDSSJ1039+1555,

SDSS0818+5410), the residual image shows a single source without obvious distortions suggestive of lensing, yet the Shu et al. (2015) analysis surprisingly still recovers  $b_{\text{SIE}}$  with a few per cent precision. The origin of the tight constraint, especially the lower bound, is unclear in these cases. By comparison, our ‘point image’ method, using only an estimated upper limit on the counter-image flux, is more conservative but probably more robust. In any case, the unresolved images in our example cases are not suitable for pixel-based fitting methods.

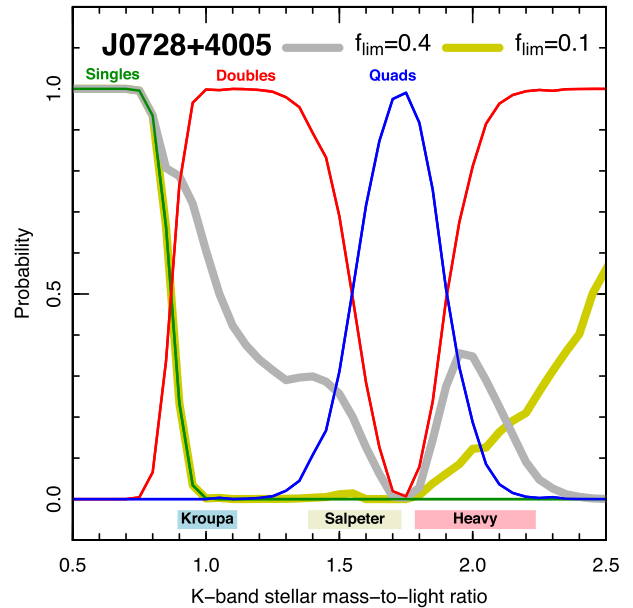
The results of Section 3 are intended to demonstrate the potential of the upper-limit lensing method, rather than to be interpreted as firm limits on the IMF in massive galaxies. In particular, we have not attempted here to determine the ‘correct’ reference mass-to-light ratio for each galaxy. The three examples show the variety of results that can be obtained. In SNL-4, the constraint is currently weak, and can only be tightened with much deeper observations, due to the faintness of the observed source and the alignment of the



**Figure 4.** Upper-limit lensing constraints on the  $K$ -band stellar mass-to-light ratio  $\Upsilon$  in SNL-4. The heavy grey line shows the probability of *not* observing a lensed counter-image to the emission-line source discovered in SNELLS, as a function of  $\Upsilon$ , for the relative flux limit of the existing data,  $f_{\text{lim}} = 0.4$ . The yellow curve shows a hypothetical deeper observation with  $f_{\text{lim}} = 0.1$ . The calculations account for the limited field of view, which causes the rise at large  $\Upsilon$ . Other annotations are as in Fig. 1. The SNELLS observation only excludes very large values,  $\Upsilon \gtrsim 1.85$ , and even a significant increase in depth would not improve this constraint. The position of the background source along the major axis of SNL-4 leads to demagnified counter-images that hinder derivation of tight limits on  $\Upsilon$  with our method.



**Figure 5.** Upper-limit lensing results for PGC007748, derived from MUSE data. The thick grey curve shows the probabilities derived for 5 per cent rms shear in each direction. Since this is the central galaxy of a cluster (Abell 295), it may be subject to larger shear than the other cases considered in this paper; hence for comparison, we also show the equivalent results for a calculation where the assumed rms is doubled (dotted lines and thick cyan curve). In contrast to the SNL-4 case, the existing data provide a useful upper-limit constraint on  $\Upsilon$ : an IMF heavier than Salpeter is disfavoured in this galaxy by the absence of a detectable counter-image.



**Figure 6.** Upper-limit lensing results for J0728+4005. The thick grey curve assumes the MaNGA field of view and relative detection threshold. The yellow curve is for a putative follow-up observation with the Gemini GMOS IFU, comprising three  $5 \times 7$  arcsec<sup>2</sup> fields (see Fig. 7), and relative threshold of 0.1. Although MaNGA does not yield a useful limit on  $\Upsilon$ , deeper observations of this system should reveal a counter-image, if the IMF in this galaxy is any heavier than that of the Milky Way.

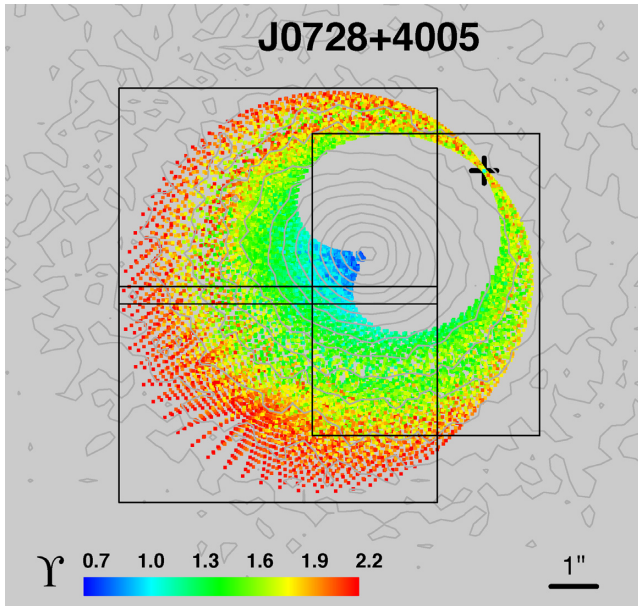
background galaxy with the major axis of the lens. For PGC007748, a useful (though not very restrictive) limit on the IMF is already possible: the dynamical  $\alpha$ -versus- $\sigma$  relation of Cappellari et al. (2013) predicts  $\alpha = 1.5 \pm 0.3$  at the velocity dispersion of this galaxy ( $254 \text{ km s}^{-1}$ ); hence our limit of  $\alpha \lesssim 1.4$  (if the stellar population is old) places PGC007748 below the mean of this relation. Finally in J0728+4005, the existing MaNGA data do not provide a useful constraint, but realistic future observations should establish a firm limit on the IMF in this object, since a detectable counter-image should be present over a wide range of  $\Upsilon$ . Conversely, failure to detect a counter-image in deeper data would imply  $\alpha \lesssim 1.0$ , which would be  $\sim 2\sigma$  below the Cappellari et al. (2013) trend at this velocity dispersion.

These results lead to two related applications for the upper-limit lensing approach described here.

First, and most obviously, exploiting singly imaged background sources promises to increase the sample of low-redshift galaxies amenable to lensing constraints on  $\alpha$ . In particular, while large IFU galaxy surveys like SAMI and MaNGA should generate a few new multiple-image lens systems (Smith 2017; Talbot et al. 2018), the number of singly imaged close-projected emitters will be much larger. In principle, the inclusion of upper limits can provide additional information on the intrinsic distribution of  $\alpha$ , e.g. using survival statistics methods (Feigelson & Nelson 1985). Indeed, including constraints from singly imaged systems is *essential* to avoid a ‘lensing bias’ that would otherwise favour higher  $\alpha$  galaxies at a given separation. Shu et al. (2015) make a similar point with regard to their derivation of the total mass profile slopes from SLACS.

The second application of our method is as a framework to guide follow-up observations of systems with close projected background sources, with the aim of either (a) recovering a faint counter-image, to establish a new lens system, or (b) attaining more stringent upper-





**Figure 7.** Predicted counter-image locations from the lensing model grid, as a function of the stellar mass-to-light ratio,  $\Upsilon$ , for a deep observation of J0728+4005, with  $f_{\text{lim}} = 0.1$  (see Fig. 6). The ‘test image’ (the position of the detected image of the background emitter) is shown by the black cross. The  $5 \times 7 \text{ arcsec}^2$  rectangles indicate hypothetical future Gemini/GMOS IFU observations motivated by our analysis.

limit lensing constraints, by pushing  $U(\Upsilon)$  closer to the fraction of intrinsically single sources. This is exemplified by the case of J0728+4005. Fig. 7 shows the positions of the counter-images predicted from the model grid for this galaxy, colour-coded by  $\Upsilon$ , and the suggested arrangement of three GMOS IFU fields, as used in our  $f_{\text{lim}} = 0.1$  calculation in Fig. 6.

Taken together, these strategies offer a promising route to speed up the hitherto laborious task of enlarging the sample of low-redshift lenses, with the aim of deriving secure and robust limits on variation in the IMF mass excess factor in massive early-type galaxies. In future work, we will present a combined analysis of multiple- and single-image systems from ongoing observational programmes, including a more rigorous treatment of the conversion between  $\Upsilon$  and  $\alpha$ .

## ACKNOWLEDGEMENTS

RJS and JRL acknowledge support from the STFC through grant ST/P000541/1. WPC was supported by STFC studentship ST/N50404X/1. All datasets used in this paper are publicly available from the corresponding observatory archives. This work is based in part on observations collected at the European Organization for Astronomical Research in the Southern Hemisphere under ESO programmes 093.B-0193, 095.B-0736, and 096.B-0832. The Pan-STARRS1 Surveys (PS1) and the PS1 public science archive have been made possible through contributions by the Institute for Astronomy, the University of Hawaii, the Pan-STARRS Project Office, the Max-Planck Society and its participating institutes, the Max Planck Institute for Astronomy, Heidelberg and the Max Planck Institute for Extraterrestrial Physics, Garching, The Johns Hopkins University, Durham University, the University of Edinburgh, the Queen’s University Belfast, the Harvard–Smithsonian Center for Astrophysics, the Las Cumbres Observatory Global Telescope

Network Incorporated, the National Central University of Taiwan, the Space Telescope Science Institute, the National Aeronautics and Space Administration under Grant no. NNX08AR22G issued through the Planetary Science Division of the NASA Science Mission Directorate, the National Science Foundation Grant no. AST-1238877, the University of Maryland, Eotvos Lorand University (ELTE), the Los Alamos National Laboratory, and the Gordon and Betty Moore Foundation. This research has made use of the NASA/IPAC Extragalactic Database (NED), which is operated by the Jet Propulsion Laboratory, California Institute of Technology, under contract with the National Aeronautics and Space Administration.

Funding for the Sloan Digital Sky Survey IV has been provided by the Alfred P. Sloan Foundation, the US Department of Energy Office of Science, and the Participating Institutions. SDSS-IV acknowledges support and resources from the Center for High-Performance Computing at the University of Utah. The SDSS web site is [www.sdss.org](http://www.sdss.org).

SDSS-IV is managed by the Astrophysical Research Consortium for the Participating Institutions of the SDSS Collaboration including the Brazilian Participation Group, the Carnegie Institution for Science, Carnegie Mellon University, the Chilean Participation Group, the French Participation Group, Harvard–Smithsonian Center for Astrophysics, Instituto de Astrofísica de Canarias, The Johns Hopkins University, Kavli Institute for the Physics and Mathematics of the Universe (IPMU)/University of Tokyo, the Korean Participation Group, Lawrence Berkeley National Laboratory, Leibniz Institut für Astrophysik Potsdam (AIP), Max-Planck-Institut für Astronomie (MPIA Heidelberg), Max-Planck-Institut für Astrophysik (MPA Garching), Max-Planck-Institut für Extraterrestrische Physik (MPE), National Astronomical Observatories of China, New Mexico State University, New York University, University of Notre Dame, Observatório Nacional / MCTI, The Ohio State University, Pennsylvania State University, Shanghai Astronomical Observatory, United Kingdom Participation Group, Universidad Nacional Autónoma de México, University of Arizona, University of Colorado Boulder, University of Oxford, University of Portsmouth, University of Utah, University of Virginia, University of Washington, University of Wisconsin, Vanderbilt University, and Yale University.

## REFERENCES

- Abazajian K. N. et al., 2009, *ApJS*, 182, 543  
 Bennett C. L., Larson D., Weiland J. L., Hinshaw G., 2014, *ApJ*, 794, 135  
 Bolton A. S., Burles S., Koopmans L. V. E., Treu T., Gavazzi R., Moustakas L. A., Wayth R., Schlegel D. J., 2008, *ApJ*, 682, 964  
 Bryant J. J. et al., 2015, *MNRAS*, 447, 2857  
 Bundy K. et al., 2015, *ApJ*, 798, 7  
 Campbell L. A. et al., 2014, *MNRAS*, 443, 1231  
 Cappellari M. et al., 2013, *MNRAS*, 432, 1862  
 Chambers K. C. et al., 2016, preprint ([arXiv:1612.05560](https://arxiv.org/abs/1612.05560))  
 Collier W. P., Smith R. J., Lucey J. R., 2018, *MNRAS*, 478, 1595  
 Conroy C., van Dokkum P. G., 2012, *ApJ*, 760, 71  
 Fadda D., Girardi M., Giuricin G., Mardirossian F., Mezzetti M., 1996, *ApJ*, 473, 670  
 Feigelson E. D., Nelson P. I., 1985, *ApJ*, 293, 192  
 Keeton C. R., 2001, preprint ([arXiv:astro-ph/0102340](https://arxiv.org/abs/astro-ph/0102340))  
 Kroupa P., 2001, *MNRAS*, 322, 231  
 Laine S., van de Marel R., Lauer T. R., Postman M., O’Dea C. P., Owen F. N., 2003, *AJ*, 125, 478  
 Maraston C., 2005, *MNRAS*, 362, 799  
 Navarro J. F., Frenk C. S., White S. D. M., 1996, *ApJ*, 462, 563

- Newman A. B., Smith R. J., Conroy C., Villaume A., van Dokkum P., 2017, *ApJ*, 845, 157
- Oldham L. J., Auger M. W., 2018, *MNRAS*, 476, 133
- Peng C. Y., Ho L. C., Impey C. D., Rix H.-W., 2010, *AJ*, 139, 2097
- Piffaretti R., Arnaud M., Pratt G. W., Pointecouteau E., Melin J. B., 2011, *A&A*, 534, A109
- Planck Collaboration XIII, 2016, *A&A*, 594, A13
- Salpeter E. E., 1955, *ApJ*, 121, 161
- Shu Y. et al., 2015, *ApJ*, 803, 71
- Skrutskie M. F. et al., 2006, *AJ*, 131, 1163
- Smith R. J., 2017, *MNRAS*, 464, L46
- Smith R. J., Lucey J. R., 2013, *MNRAS*, 434, 1964
- Smith R. J., Lucey J. R., Conroy C., 2015, *MNRAS*, 449, 3441
- Sonnenfeld A., Leauthaud A., Auger M. W., Gavazzi R., Treu T., More S., Komiyama Y., 2018, *MNRAS*, 481, 164
- Talbot M. S. et al., 2018, *MNRAS*, 477, 195
- Treu T., 2010, *ARA&A*, 48, 87
- Treu T., Auger M. W., Koopmans L. V. E., Gavazzi R., Marshall P. J., Bolton A. S., 2010, *ApJ*, 709, 1195

This paper has been typeset from a  $\text{\TeX}/\text{\LaTeX}$  file prepared by the author.