

1 **Continuity and Individuality in Medieval Hereford,**
2 **England: A Stable Isotope Approach to Bulk Bone**
3 **and Incremental Dentine**

4 Authors:

5 Hrafnhildur Helga Halldórsdóttir^{1,2,a,*}, Bryony Rogers^{2*}, Frank DiRenno^{2*}, Gundula
6 Müldner³, Darren R. Gröcke⁴, Ellen Barnicle², Blessing Chidimuro⁵, Malcolm Evans²,
7 Ruth Morley², Monica Neff², Cassidy Sharp², Ashleigh Simpson², Andy Boucher⁶,
8 Janet Montgomery².

9
10 * Equal contributions

11 ^a Corresponding Author: h.halldorsdottir@tees.ac.uk

12 1: School of Science, Engineering and Design, Teesside University.

13 Borough Road, Middlesbrough, TS1 3BA, United Kingdom.

14 2: Department of Archaeology, Durham University.

15 South Rd, Durham, DH1 3LE, United Kingdom.

16 3: Department of Archaeology, The University of Reading.

17 Whiteknights Box 227, Reading, RG6 6AB, United Kingdom.

18 4: Department of Earth Sciences, Durham University.

19 South Rd Durham, DH1 3LE, United Kingdom.

20 5: Department of Archaeology, University of York.

21 Wentworth Way, Heslington, York, YO10 5DD, United Kingdom.

22 6: Headland Archaeology (UK) Ltd.

23 13 Jane Street, Edinburgh, EH6 5HE, United Kingdom.

1 Abstract

2 In this study, bulk bone collagen carbon ($\delta^{13}\text{C}$) and nitrogen ($\delta^{15}\text{N}$) isotope data from 49
3 individuals, recovered from two Medieval burial grounds in Hereford, England, are coupled
4 with incremental dentine data from five individuals with high $\delta^{15}\text{N}$ bone values who survived
5 into old age, to see whether the high $\delta^{15}\text{N}$ values were consistent throughout their childhood
6 and adolescence. There are statistically insignificant differences between mean bone $\delta^{13}\text{C}$
7 and $\delta^{15}\text{N}$ values from the two Hereford populations, exhumed at Cathedral Close and St.
8 Guthlac's Priory, despite temporal and demographic differences (St Guthlac's mean: $\delta^{13}\text{C}$ -
9 $19.4 \pm 0.5\text{‰}$ and $\delta^{15}\text{N}$ $10.9 \pm 1.2\text{‰}$. Hereford Cathedral mean: $\delta^{13}\text{C}$ $-19.6 \pm 0.4\text{‰}$ and $\delta^{15}\text{N}$
10 $10.4 \pm 0.9\text{‰}$, 1σ). In comparison to other contemporary urban populations, the Hereford
11 individuals present significantly lower but more variable $\delta^{15}\text{N}$ values, suggesting a diet low in
12 protein from high trophic level foods such as meat and milk, possibly the result of differing
13 social status or geographic factors. The approximately 23-year long incremental dentine
14 profiles all show considerable fluctuation in stable isotope values during childhood and
15 adolescence for all individuals until around age 20, suggesting possible influence by
16 physiological processes related to growth and development.
17

18 Key words:

- 19 ● Carbon Stable Isotopes
- 20 ● Nitrogen Stable Isotopes
- 21 ● Palaeodiet
- 22 ● Hereford Cathedral
- 23 ● St Guthlac's Priory
- 24 ● Childhood Diet

1 Introduction

Coupled with archaeological, historical, and palaeopathological observations, stable isotope analysis is an increasingly valuable tool to examine palaeodietary, geographic, and temporal differences in past human populations (Lee-Thorp, 2008; Müldner and Richards, 2005, 2006, 2007a, 2007b). Typically, such analyses have been undertaken through sampling bone collagen, focusing on the ratios of carbon ($^{13}\text{C}/^{12}\text{C}$, $\delta^{13}\text{C}$) and nitrogen ($^{15}\text{N}/^{14}\text{N}$, $\delta^{15}\text{N}$), to estimate the proportion of plant, animal, and fish protein in a population's diet, along with possible indicators of stress or illness, based on several well-established principles (Balasse and Ambrose, 2005; Beaumont and Montgomery, 2016; Cerling, 1993; Lee-Thorp, 2008). As such, the $\delta^{15}\text{N}$ values of sampled collagen will increase significantly when an individual's diet includes protein from fish, meat or animal secondary products (Schoeninger and DeNiro, 1984). These values may further be lowered by anabolic events, such as growth and pregnancy, and increased by catabolic events, such as malnutrition and illness (Fuller et al., 2004, 2005, 2006; Mekota et al., 2006; Waters-Rist and Katzenberg, 2010). Typically, $\delta^{13}\text{C}$ values will predominantly reflect the photosynthetic pathway (C_3 or C_4) of plants at the bottom of the food chain (Faraquhar et al., 1989). Increased $\delta^{13}\text{C}$ values can also indicate the presence of marine protein in a person's diet, due to the heightening effect of carbon reservoirs on the $\delta^{13}\text{C}$ values of marine organisms, or access to imported plant protein such as millet (Schoeninger and DeNiro, 1984).

Using these principles, $\delta^{13}\text{C}$ and $\delta^{15}\text{N}$ profiles for burial populations have been created to estimate the relationship between the diet, health, and socio-economic status of past populations and to provide comparisons with historical evidence (e.g. Curtis-Summers et al., 2014; Katzenberg and Lovell, 1999; Müldner and Richards, 2005, 2006, 2007a, 2007b, Thompson et al., 2008). Most commonly, these have been carried out on bone collagen, but such isotope values face the challenge that they may reflect an average of the last twenty years or more of an individual's life, depending on the rate of bone remodelling (Cox and Sealy, 1997; Hedges et al., 2007). These challenges are exacerbated by factors such as imprecise assessments of age at death, failure to resolve short-term events, and limitations in fully representative sampling, due to the inherent biases in the demography of burial populations (AlQahtani et al., 2010; Beaumont et al., 2015; Reynard and Tuross, 2015; Wood et al., 1992). However, recently refined techniques, utilising incremental primary dentine instead of bone collagen have overcome many of these issues. Primary dentine does not remodel and mineralises in a highly regular manner, recording discrete isotope values at incremental lines of growth during formation (Beaumont and Montgomery, 2015; Beaumont et al., 2013, 2014; Lee-Thorp, 2008). By sectioning primary dentine at specific intervals, isotope values can be assigned approximate known formation times and the age at which each section formed can be estimated (Beaumont and Montgomery, 2015). Using this approach, it is possible to point out specific occurrences in past individuals' lives, often related to specific events such as periods of famine (Beaumont and Montgomery, 2016), illness (Fuller et al., 2005) or weaning (Fuller et al., 2006), predominantly during childhood (cf. Beaumont and Montgomery, 2015; Beaumont et al., 2013, 2014, 2015; Eerkens et al., 2016; Montgomery et al., 2013; Sandberg et al., 2014; van der Sluis et al., 2015).

In this paper, $\delta^{13}\text{C}$ and $\delta^{15}\text{N}$ profiles constructed from incrementally sampled dentine, reflecting approximately the first 23 years of life (Beaumont and Montgomery, 2015), are presented from five individuals with similar isotopic bone values. The individuals were chosen from a pool of $\delta^{13}\text{C}$ and $\delta^{15}\text{N}$ bulk bone collagen data from Medieval Hereford, England, as

1 they had high $\delta^{15}\text{N}$ values and all survived into adulthood. We will discuss the contribution of
2 this incremental data to the bulk bone collagen interpretation within the context of Medieval
3 palaeodietary research, asking whether the high $\delta^{15}\text{N}$ bulk bone values were consistent
4 through the childhood and adolescence of the five individuals. Further, we consider any mutual
5 characteristics present in the incremental profiles that could be attributed to underlying
6 physiological changes during growth and development, rather than episodes of illness, famine
7 or dietary change.

8 2 The Burial Populations

9 2.1 St Guthlac's Priory

10 St. Guthlac's Priory in Hereford, England, (established c.7th century CE) was originally located
11 in the Castle Green area near Hereford Cathedral. Later, it was moved to its current location
12 at the modern-day County Hospital in 1144, where it operated until 1539 (Figure 1). All
13 mentions of St. Guthlac's Priory in this paper refer to its latter location. During excavations
14 between 1998 and 2003, masonry associated with the priory, and a burial ground with
15 numerous skeletal remains, were uncovered (Crooks, 2005). The burial ground at this later
16 St. Guthlac's Priory appears to have served local parishioners (St. Peter's parish) of Hereford
17 rather than the priory exclusively, with interments of men, women, and children, and no signs
18 of a separate area for monks (Boucher et al., 2015; Crooks, 2005). Since the relocation of St.
19 Guthlac's, Hereford Cathedral held a burial monopoly in Hereford, claiming all parishioners
20 whose goods at the time of death exceeded 6 shillings, whilst women and those of lesser
21 means were buried in their local parishes (Boucher et al., 2015, p. 11; Forrest, 2010, p. 1120).
22 However, historical evidence indicates that in 1382, parishioners could choose where they
23 were buried, suggesting that St. Guthlac's Priory was eventually the burial place of individuals
24 from all socioeconomic backgrounds (Forrest, 2010, p. 1131).

25 Palaeopathological analysis of the burial population showed a high rate of dental
26 caries, infection, anaemia, as well as accident- and work-related joint disease, suggesting a
27 poor living environment, while no signs of unusual pathologies were present (Roberts, 2005;
28 Crooks, 2005). The burial ground included at least two interment phases, the first of which
29 appears to date to the late 12th and early 13th centuries, but the cemetery was in use until the
30 early 16th century (Crooks, 2005).

31

32

33 **Figure 1: 1.5 columns**

34 2.2 The Cathedral Close

35 The origins of the bishopric at Hereford go back to the late 7th century CE, with at least two
36 Anglo-Saxon predecessor churches attested to through written documents, possibly
37 including the former St. Guthlac's church at the Castle Green location, but archaeological
38 evidence is scarce (Boucher et al, 2015, 1-14). The existing Cathedral dates to the first half
39 of the 12th century and was a popular pilgrimage site throughout the Middle Ages as the final
40 resting place of Saint Æthelberht, an 8th century Anglo-Saxon king and martyr, and later of
41 Saint Thomas de Cantilupe (died 1282 CE, canonized 1320) (Boucher et al., 2015, pp. 1-
42 14). Excavations in the modern Cathedral Close area in 1993 and 2009-11 have uncovered

1 over 6000 individuals. Most of the burials date from after c. 1100 CE, while a large pit of
2 disarticulated human remains were moved during the construction of the 12th century
3 cathedral (Boucher et al., 2015, pp. 11, 23). The site was used for burial again from the late
4 12th to the 16th century and three Medieval mass graves in the area have been linked to
5 outbreaks of the Black Death in the city in 1348-49 and 1361 (Boucher, et al, 2015, 23-25).
6 Very little is known about the Early Medieval and separate Later Medieval occupants of the
7 mass graves. Burial rites observed for some of the Early Medieval Cathedral Close and St.
8 Guthlac's Priory skeletons imply varied status amongst individuals from both burial grounds,
9 with those in stone cists and coffins possibly being wealthier than those in simple shroud
10 burials (Table 1). Due to the burial monopoly the Cathedral gained, the Early Medieval
11 cemetery likely contains individuals from both urban and rural communities from varying
12 levels of socioeconomic status (Boucher et al., 2015, p. 11; Forrest, 2010).
13

14 3 Materials and Methods

15 3.1 Sample Selection

16 The 20 bulk bone collagen samples from the Cathedral Close were analysed as part of the
17 initial assessment of the 1993 excavations (Hurst et al., 2003) (Table 2). They were selected
18 to include individuals from the main chronological phases and comprised ten samples from
19 the Earliest Medieval burial phase, and ten from the later Medieval 'plague pits'. A further 29
20 individuals from the St Guthlac's Priory burial population were analysed for bulk bone collagen
21 for a Medieval dietary study (Table 1). Individuals were chosen for analysis based on sample
22 availability from the Durham University Fenwick Human Osteology Laboratory Hereford
23 collection, and where available, cortical bone from ribs was preferred to long bones. For the
24 incremental primary dentine study, paired mandibular left third molars (M3) and canines were
25 taken from a sub-sample of five adult individuals based on their similarly high $\delta^{15}\text{N}$ bulk bone
26 results (Table 1; Figure 2). This would allow for the determination of whether these high values
27 were consistent throughout their lives.
28

29 **Table 1. 1.5 columns**

30 3.2 Sample Preparation and Stable Isotope Analysis

31 The bone samples from Hereford Cathedral Close were analysed in 2002 in the Department
32 of Archaeological Sciences, University of Bradford, using the modified Longin method with
33 ultrafiltration following Brown et al. (1988), as described in Müldner and Richards (2005).

34 For the St. Guthlac's Priory samples, 100-200 mg sections were cut from bone
35 elements, while teeth were bisected and enamel removed from one half of the tooth following
36 method 2 outlined by Beaumont et al. (2013). Secondary dentine was also removed by
37 abrading the pulp chamber (Beaumont et al., 2015). Tooth and bone elements were
38 demineralised in 0.5M HCl at 4°C. Once demineralised, teeth were cut into horizontal sections
39 (c.1 mm) from crown to root apex and each section placed into a separately labelled micro
40 tube. Collagen was extracted following the original Longin method (1971) and gelatinised bone
41 collagen was Ezee filtered. Dentine filtration was considered unnecessary due to the lack of
42 exogenous debris compared to bone (Beaumont et al., 2014). Samples were frozen, then

1 freeze-dried at -30°C and 300 mmHg for 48 hours. The resulting collagen was weighed to
2 calculate the minimum collagen yield. All tools and surfaces were thoroughly cleaned between
3 samples to avoid cross-contamination.

4 Aliquots of 0.3-0.4mg of collagen were weighed out into 4x6mm tin foil cylinders. Total
5 organic carbon, total nitrogen content, and stable isotope ratios were calculated using a
6 Costech Elemental Analyser (ECS 4010) connected to a ThermoFinnigan Delta V Advantage
7 isotope ratio mass spectrometer in the Durham University Stable Isotope Biochemistry Lab
8 (SIBL), Department of Earth Sciences. Isotopic accuracy was monitored through routine
9 analyses of in-house standards, calibrated against international standards (e.g., USGS 40,
10 USGS 24, IAEA 600, IAEA N1, IAEA N2) with a linear $\delta^{13}\text{C}$ range between -46‰ and +3‰
11 and $\delta^{15}\text{N}$ range between -4.5‰ and +20.4‰. Analytical uncertainty in carbon and nitrogen
12 isotope analysis was typically 0.1‰ for replicate analyses of the international standards and
13 <0.2‰ on replicate sample analysis. Total organic carbon and nitrogen data was obtained as
14 part of the isotope analysis using an internal standard (Glutamic Acid, 40.82 % C, 9.52 % N)
15 and C:N ratios were recorded to examine diagenetic effects (Ambrose, 1990). Carbon isotope
16 ratios were corrected for ^{17}O contribution, and isotope ratios were expressed as parts per
17 thousand (‰) relative to Vienna Pee Dee Belemnite (VPDB) for carbon, and Ambient Inhale
18 Reservoir (AIR) for nitrogen (Werner and Brand, 2001) as:

19
20 *Equation 1*

$$\delta\text{‰} = (R_{\text{Sample}}/R_{\text{Standard}} - 1) * 1000$$

23 3.3 Data Analysis

24 Analytic uncertainty of standards appears at 2 s.d. on all graphs ($\pm 0.4\text{‰}$). All bone samples
25 were measured in duplicate and mean values calculated. Most of the dentine samples used
26 to construct dietary profiles were analysed as single samples with selected increments
27 measured in duplicate for quality control. Bulk bone data was plotted on scatter charts,
28 summary statistics calculated and non-parametric statistical tests carried out for comparative
29 statistics using IBM SPSS 24. Non-parametric tests were chosen due to the small and varying
30 sample sizes of compared variables, and presence of outliers in the data.

31 Age ranges were assigned to individual dentine sections by dividing the total time of
32 tooth formation, using a modified version of the equation outlined by Beaumont and
33 Montgomery (2015) (equation 2), and located on the approximate midpoints of each individual
34 dentine section range on graphs (equation 3).

35
36 *Equation 2*

$$\text{Section Formation Time (years)} = \frac{\text{Total tooth formation time (years)}}{\text{Number of sections} - 1}$$

38
39 *Equation 3*

$$\text{Mid point Age (years)} = \frac{(\text{Age at start of section} + \text{Age at end of section})}{2}$$

1 Some teeth were visibly worn through the occlusal enamel into the primary dentine. In
2 worn canines, the expected weaning signal was also missing from isotope profiles. To combat
3 offsets in age caused by this loss, the amount of dentine lost at the occlusal end of the
4 sequence was estimated in millimetres (Table 1). As each increment is 1 mm in width, this
5 number of increments is equivalent to the number of estimated millimetres lost. This number
6 was then added to the total number of cut increments for each worn tooth in Equation 2, to
7 calculate a more accurate formation time per section. The missing sections were also
8 accounted for when assigning ages to each incremental section, with worn teeth starting at
9 later ages than unworn teeth (See Supplementary Information 1).

10 4. Results and Discussion

11 With one exception from Cathedral Close (HFD-4241), all bone and dentine samples met the
12 standards for collagen quality and yield. C:N ratios were within the accepted range of 2.9-3.6
13 (DeNiro, 1985) and each sample had a collagen yield above 1% (van Klinken, 1999).

14
15 **Table 2: 2 columns**

16 4.1 Bone Collagen and the Burial Populations

17 Complete bone collagen results for the burial population at St. Guthlac's priory and Hereford
18 Cathedral Close are presented in Table 2 and Figure 2. At St. Guthlac's Priory, $\delta^{13}\text{C}$ values
19 ranged from -20.4‰ to -18.1‰, with a mean value of $-19.4 \pm 0.5\text{‰}$ at 1 s.d., and $\delta^{15}\text{N}$ values
20 from 8.3‰ to 13.3‰, with a mean value of $10.9 \pm 1.2\text{‰}$ at 1 s.d. At the Cathedral Close, $\delta^{13}\text{C}$
21 values are very similar, with a mean value of $-19.6 \pm 0.4\text{‰}$ at 1 s.d. and ranging between -
22 20.3‰ and -18.8‰. Individuals from the Cathedral Close also have $\delta^{15}\text{N}$ values that are very
23 similar to those from St Guthlac's Priory, ranging from 8.5‰ to 12‰ with a mean of 10.4
24 $\pm 0.9\text{‰}$ at 1 s.d.

25
26 **Figure 2: 1 column**

27
28 **Table 3: 1 column**

29
30 A Kruskal-Wallis H test indicates that the overall differences in the $\delta^{13}\text{C}$ and $\delta^{15}\text{N}$
31 values from the three different burial contexts are statistically insignificant (Table 3), indicating
32 a demographic similarity between the two burial grounds and continuity in diet and health in
33 Hereford throughout the Medieval Period. Despite these similarities, the stable isotope data
34 does portray variability between the individuals within each population. While adults and males
35 appear to have higher mean $\delta^{15}\text{N}$ and $\delta^{13}\text{C}$ values than females and children (Table 4), a non-
36 parametric Mann-Whitney test indicates differences between the two are statistically
37 insignificant (Table 3). Therefore, this variability does not appear to be heavily affected by
38 biological sex or age. Intra-population variability in burial populations at Medieval English sites
39 in Yorkshire and Cheshire (Figure 3) has been attributed to differences in social position. For
40 example, fish and meat limited to the more affluent due to their higher price compared to that
41 of grain and vegetables. (Müldner and Richards, 2005, 2007a, 2007b; Richards et al., 2002).
42 At St. Guthlac's, the three individuals with the highest $\delta^{15}\text{N}$ values (HERF 9501, 9502, 9526)
43 were buried in coffins, while the individuals with the lowest $\delta^{15}\text{N}$ values (HERF 1801, 8114,

1 8501) were not. As the presence of coffins has been associated with higher status, this
2 indicates that, similarly to the Cheshire and Yorkshire populations, status influenced the
3 intrapopulation variability at St. Guthlac's.

4
5 **Table 4: 2 columns**

6
7
8 **Figure 3: 1 column**

9
10 In the Yorkshire and Cheshire burial assemblages, variation in the $\delta^{13}\text{C}$ and $\delta^{15}\text{N}$
11 values between populations was largely attributed to differences between urban and rural
12 environments, especially considering proximity to urban fishing rivers and trading centres
13 (Müldner and Richards, 2005, 2007a, 2007b; Richards et al., 2002). In agreement with this,
14 the similarity between the two Hereford burial populations is not surprising, as both are
15 associated with city parishes drawing from geographically similar populations. Both Hereford
16 sites are similar to the Yorkshire and Cheshire populations with regard to $\delta^{13}\text{C}$ values,
17 indicating a largely terrestrial diet. In contrast, mean nitrogen isotope ratios in Hereford are
18 considerably lower than those of the Yorkshire and Cheshire populations, with the exception
19 of rural Wharram Percy, which had similarly low mean nitrogen isotope ratios (Figure 3; Table
20 5). This is somewhat surprising, as St. Guthlac's Priory and the Cathedral Close are both
21 located within a trading centre (Hereford) and in proximity with the River Wye, which 18th
22 century texts claim produced 'extremely cheap' fish, especially salmon, in Medieval times
23 (Price, 1796, p. 66). No $\delta^{13}\text{C}$ and $\delta^{15}\text{N}$ values are available for faunal bone or botanical
24 remains in Herefordshire, and so factors unique to the geographic area of Hereford cannot be
25 accounted for. For example, $\delta^{15}\text{N}$ values for fish can vary considerably between different
26 species and river systems (Dempson et al., 2009), and the effects of possible region-specific
27 crop manuring practices that can affect the amount of nitrogen cycling in the food web cannot
28 be taken into account (Bogaard et al., 2007). Although the burial populations at St. Guthlac's
29 Priory and the Cathedral Close may appear to have subsisted on a more plant-based diet than
30 the comparative urban populations in Yorkshire and Cheshire, it is impossible to attempt such
31 comparisons without geographic baseline data. Intra-population variability may, however, be
32 examined more closely by using incremental dentine analysis.

33
34 **Table 5: 2 columns**

35 36 4.2 Dentine Collagen and the Early Life Histories of Five Individuals at 37 St. Guthlac's Priory

38 The $\delta^{13}\text{C}$ values of all individuals sampled for their incremental dentine ranged from -22.0‰
39 to -16.8‰ and $\delta^{15}\text{N}$ values from 8.0‰ to 14.6‰, presenting greater variability in total than was
40 found in the bone collagen (Figures 4 and 5; Supplementary Information 1). The individuals'
41 combined dentine profiles have a mean range of 2.0‰ in $\delta^{13}\text{C}$ values and 3.4‰ in $\delta^{15}\text{N}$,
42 despite all five individuals having similar bone collagen isotope values. Individuals without
43 extensive occlusal tooth wear (5001, 9515 and 9543) have high $\delta^{15}\text{N}$ values initially, which
44 drop ~2‰ by two years of age, strongly indicative of weaning. Similar patterns have been
45 observed in populations ranging from the Medieval period to modern times, and are typically

1 ascribed to weaning (Richards et al., 2002; Fuller et al., 2006; Burt, 2015; van der Sluis et al.,
2 2015). However, the $\delta^{13}\text{C}$ profiles of the St. Guthlac's Priory individuals do not show the same
3 expected drop with the lowered trophic level. This may be caused by the averaging effects of
4 dentine formation, as studies of modern infants indicate that the $\delta^{13}\text{C}$ drop is more rapid than
5 that of $\delta^{15}\text{N}$ (Fuller et al., 2006). It may also be related to other less-known physiological factors
6 or the mother's diet and health (Beaumont et al., 2015). Alternatively, the expected carbon
7 shift to lower values could be compensated for by a change to a diet with a lower lipid content
8 and hence higher $\delta^{13}\text{C}$, although to date this has mainly been observed in modern biological
9 studies (McCutchan et al., 2003; Stott et al., 1999).

10 Unique differences between the individuals analysed also highlight the way each
11 person's individuality and different life experiences need to be considered when attempting to
12 identify cultural trends in bone data. For example, individual 9543, who was buried in a coffin,
13 appears to have had higher $\delta^{15}\text{N}$ values than the others until her early 20s. Her terrestrial $\delta^{13}\text{C}$
14 values during this period of elevated $\delta^{15}\text{N}$ suggest freshwater fish or terrestrial meat
15 consumption rather than significant marine protein consumption. She was the only female
16 included in the incremental analysis, and females have been reported to exhibit higher $\delta^{15}\text{N}$
17 values during childhood than males due to unknown cultural or physiological factors
18 (Henderson et al., 2014). Whilst she is the only female included in this analysis, making it
19 difficult to say whether this is a factor in her case, coffins were mainly afforded to higher status
20 burials at St. Guthlac's, which suggests status may be the explanation in this case. Another
21 individual, 9526, has the largest range of $\delta^{15}\text{N}$ values (10.4-14.0‰) among the group,
22 manifesting a similar pattern during childhood as individual 9543. This individual also had the
23 highest $\delta^{13}\text{C}$ and $\delta^{15}\text{N}$ bone values of all analysed Hereford individuals and evidence of a large
24 burial coffin suggests the individual may have been obese (Crooks, 2005). Excluding
25 adolescence, this individual appears to have maintained these high $\delta^{15}\text{N}$ values from his early
26 twenties, with $\delta^{13}\text{C}$ values rising steadily throughout his earlier life, which may indicate
27 increasing access to marine foods. In conjunction with his possible obesity, this could indicate
28 that this was an individual of relatively high socio-economic status due to increased access to
29 food resources compared to the rest of the population.

30
31 **Figure 4:** 2 columns

32
33 The remaining individuals (4001, 5001, 9515) are similar to each other, exhibiting
34 relatively low $\delta^{13}\text{C}$ and $\delta^{15}\text{N}$ dentine values between the ages of 8 and 17 compared to the
35 population's mean adult bone collagen values, and $\delta^{15}\text{N}$ values that rise slightly above the
36 population mean after age 18. Interestingly, 5001 and 4001 were excavated from the southern
37 part of the burial ground and exhibited various pathologies, such as cribra orbitalia (Roberts,
38 2005). Although individual 9515 did have relatively high $\delta^{15}\text{N}$ values around age 6 to 8, prior
39 to this his profile fluctuates below the population mean. Due to the presence of a mortuary
40 chalice in his grave, it has been suggested that he may have been a priest, or at least
41 associated with the clergy (Crooks, 2005). However, his relatively low values contrast with
42 several other 'priest' burials from other contemporary populations, where both $\delta^{13}\text{C}$ and $\delta^{15}\text{N}$
43 values were higher than those of the general population (Müldner and Richards, 2005, 2007b;
44 Patrick, 2014). Conversely, another possible priest from St. Giles, Yorkshire, expressed
45 isotopic ratios similar to his population's mean (Müldner and Richards, 2005), implying that
46 the possible priests at St. Guthlac's and St. Giles may have had diets comparable to those of
47 the lay population.

1 It is notable that the lowest $\delta^{15}\text{N}$ values are generally present between the ages of 8
2 and 16 (Figure 4, 5a-b). This may be caused by one of two things: a specific adolescent diet
3 prior to transitioning to an adult diet with higher levels of animal protein, as suggested at
4 Wharram Percy (Richards et al., 2002) and Çatalhöyük, Turkey (Pearson et al., 2015), or
5 changes in nitrogen fractionation associated with growth and development (Henderson et al.,
6 2014; Waters-Rist and Katzenberg, 2010). Similar patterns have been observed in several
7 other burial populations, with connections being drawn between the main growth period of
8 humans and reduced $\delta^{15}\text{N}$ values between the ages of 10 and 18 (cf. Eerkens et al., 2016;
9 Reitsema, 2013; van der Sluis et al., 2015; Waters-Rist and Katzenberg 2010). Fuller et al.
10 (2004) have also observed lower $\delta^{15}\text{N}$ values associated with increased BMI during pregnancy
11 using hair, and a similar growth-related relationship has been reported in various animal
12 species soft tissue, such as fish, birds and foxes (Minagawa and Wada, 1984; Roth and
13 Hobson, 2000; Trueman et al., 2005). Further, the dentine profile of a Neolithic individual from
14 Sumburgh in Shetland (Montgomery et al., 2013) and an alternate primate species, the
15 Rhesus monkey (Reitsema and Muir, 2015) bore lower $\delta^{15}\text{N}$ values during adolescence than
16 adulthood. Although distinct species at different periods of time may undergo different
17 fractionation processes, the pan-occurrence of this phenomenon within several species, as
18 well as Neolithic, Medieval, and modern humans, would suggest a physiological effect rather
19 than the widespread use of similar age-specific culturally influenced diets. Nevertheless,
20 isotopic changes during periods of growth have not been observed in some studies
21 investigating this effect in bone, such as that of Waters-Rist and Katzenberg (2010), but they
22 suggest this may be influenced by the slow rate of growth in long bones, which could mask
23 any temporary dips in $\delta^{15}\text{N}$ values. The higher temporal resolution expressed by soft tissue
24 and hair analysis is more equipped to show this feature, and it appears to be captured by the
25 incremental data presented in this paper. Supporting this, an incremental dentine study by
26 Henderson et al. (2014) covering ages 0 to 8 also indicated lower $\delta^{15}\text{N}$ values during
27 childhood, which they also relate to growth effects.

28
29 **Figure 5:** 2 columns
30

31 As all the individuals analysed for their incremental dentine in this study survived into
32 adulthood and had relatively high $\delta^{15}\text{N}$ bone values, indicative of higher socioeconomic status,
33 it could be concluded that they had comparatively healthy childhoods and experienced little
34 physiological stress. Therefore, these ~23-year dietary profiles may provide valuable insight
35 into the early lives of typically unstressed individuals in Medieval Hereford. In this context, the
36 fact that the incremental $\delta^{15}\text{N}$ and $\delta^{13}\text{C}$ values of all five individuals fluctuate considerably until
37 around age 18 to 20 (Figure 4 and 5 a-b), when they approach their bone value, is especially
38 notable. This underlines the need to consider and investigate more closely the possible effects
39 of physiological processes related to growth, especially when comparing differences in bone
40 collagen isotope data between (weaned) children/sub-adults and adult individuals. These
41 effects could have important interpretational consequences for bulk bone analyses. For
42 instance, individuals who did not reach adulthood may be more appropriately compared with
43 their age group peers than adult individuals and the relatively high age resolution in childhood
44 bulk bone data may offer a different kind of opportunity for intra population analyses. Perhaps,
45 dental seriation of presumably healthy individuals, such as the ones analysed in this paper,
46 may be utilised as comparative data to assess whether deceased children within a burial
47 population may have died from acute (e.g. an accident or acute infection) or chronic causes
48 (e.g. long-term illness or prolonged malnutrition). As incremental data from the young lives of

1 long lived, presumably healthy individuals from the burial population could be understood to
2 present a baseline for a relatively unstressed childhood, using them for comparison to
3 childhood bulk bone data may be preferred to comparison with other bulk bone data. Not only
4 to individuals of another age group, because of the growth effect discussed above, but also to
5 those who died during childhood, due to the high possibility of stress or malnutrition affecting
6 the age group mean or median stable isotope value in bone collagen.

7 For example, almost all analysed individuals at St. Guthlac's Priory who died during
8 childhood have bone collagen values that fall within the upper and lower quartile ranges
9 expressed by the corresponding age within the incremental dentine samples, for both $\delta^{15}\text{N}$
10 and $\delta^{13}\text{C}$ (Figure 5a-b). This suggests that their bone values represent normal, underlying
11 physiological processes rather than poor long-term health or unusual diet, leading to the
12 hypothesis that their death was sudden and not likely caused by a chronic condition.
13 Conversely, individual 1801 has a $\delta^{15}\text{N}$ value that lies below the range of the values for the
14 corresponding incremental dentine age, suggesting less access to animal protein throughout
15 their young life compared to their similarly aged peers. In fact, 1801's skeleton was noted as
16 being askew in the grave, implying a hurried burial in the southern part of the burial ground
17 and indicative of a lower socioeconomic status (Crooks, 2005).

18 5 Conclusions

19 The bone $\delta^{13}\text{C}$ values presented in this paper show that there is little variation in the overall
20 bulk bone values between different burial populations in Hereford, portraying high levels of
21 continuity between Early and Late Medieval populations. Furthermore, there is no statistically
22 significant difference between individuals of varying age or sex. The $\delta^{13}\text{C}$ values are similar to
23 those of other Medieval English populations, suggesting a largely terrestrial diet. In contrast,
24 the Hereford populations carry relatively low $\delta^{15}\text{N}$ values compared to their Late Medieval
25 counterparts, possibly caused by less access to ^{15}N enriched protein, but lack of geographic
26 and faunal data in proximity to Hereford means they cannot be accurately compared. The
27 incremental profiles present several similar characteristics, such as lower values during
28 childhood, possibly caused by physiological processes related to growth and development,
29 rather than a specific childhood diet or illness. We suggest that the bone collagen $\delta^{13}\text{C}$ and
30 $\delta^{15}\text{N}$ values of children and young adults should be considered separately from those of fully
31 developed adults. Furthermore, that the incremental dentine profiles of presumably healthy
32 older adults may be used as intra-population standards with which to compare the bone
33 collagen values of those who died during childhood in order to better identify outliers within
34 that population.

35 Acknowledgements

36 We would like to thank our respective institutions for their support, Katy Ulewicz from St
37 Guthlac's Priory in the course of her MSc dissertation research at Durham University and
38 Kurt Gron for his advice on preparing the manuscript. We are grateful to Kayla Crowder and
39 Joanna Moore for their help and advise with the incremental dentine sampling prep. We
40 would also like to thank Charlotte Roberts and Tina Jakob for granting permission to sample
41 the skeletal remains from St Guthlac's Priory and the Wye valley NHS trust for funding the
42 associated excavation work.
43

1 References

- 2 AlQahtani, S., Hector, M., and Liversidge, H., 2010. Brief communication: The London atlas
3 of human tooth development and eruption. *American Journal of Physical Anthropology* 142,
4 481-490.
- 5 Ambrose, S.H., 1990. Preparation and characterization of bone and tooth collagen for
6 isotopic analysis. *Journal of Archaeological Science* 17, 431-451.
- 7 Balasse, M. and Ambrose, S.H., 2005. Distinguishing sheep and goats using dental
8 morphology and stable carbon isotopes in C4 grassland environments. *Journal of*
9 *Archaeological Science* 32 (5), 691-702.
- 10 Beaumont, J., and Montgomery, J., 2015. Oral histories: a simple method of assigning
11 chronological age to isotopic values from human dentine collagen. *Annals of Human Biology*
12 42 (4), 407-414.
- 13 Beaumont, J., and Montgomery, J., 2016. The Great Irish Famine: identifying starvation in
14 the tissues of victims using stable isotope analysis of bone and incremental dentine
15 collagen. *PloS one*, 11 (8).
- 16 Beaumont, J., Gledhill, A., Lee-Thorp, J. and Montgomery, J., 2013. Childhood Diet: A closer
17 examination of evidence from dental tissues using stable isotope analysis of incremental
18 human dentine, *Archaeometry* 55 (2), 277-295.
- 19 Beaumont, J. Gledhill, A., and Montgomery, J., 2014. Isotope analysis of incremental human
20 dentine: towards higher temporal resolution. *Bulletin of the International Association for*
21 *Paleodontology* 8 (2), 212-223.
- 22 Beaumont, J., Montgomery, J., Buckberry, J., and Jay, M., 2015. Infant mortality and isotopic
23 complexity: new approaches to stress, maternal health, and weaning. *American Journal of*
24 *Physical Anthropology* 157 (3), 441-457.
- 25 Bogaard, A., Heaton, T.H.E., Poulton, P., and Merbach, I., (2007). The impact of manuring
26 on nitrogen isotope ratios in cereals: archaeological implications for reconstruction of diet
27 and crop management practices. *Journal of Archaeological Science* 34, 335-343.
- 28 Boucher, A., Craddock-Bennet, L., and Daly, T., 2015. *Death in the Close: A Medieval*
29 *Mystery*. Edinburgh, Headland Archaeology.
- 30 Brown, T.A., Nelson, D.E., Vogel, J.S., Southon, J.R., 1988. Improved collagen extraction by
31 modified Longin method. *Radiocarbon* 30, 171-177.
- 32 Burt, N.M., 2015. Individual dietary patterns during childhood: an archaeological application
33 of a stable isotope microsampling method for tooth dentin. *Journal of Archaeological Science*
34 53, 277-290.
- 35 Cerling, T.E., 1993. Stable carbon and oxygen isotopes in soil carbonates. *Geophysical*
36 *Monograph* 78, 217-231.
- 37 Cox, G., and Sealy, J., 1997. Investigating identity and life history: isotopic analysis and
38 historical documentation of slave skeletons found in the Cape Town foreshore, South Africa.
39 *International Journal of Historical Archaeology* 1, 207-224.
- 40 Crooks, K., 2005. Excavations at Hereford county hospital. Report SMR 31923.
41 Archaeological Investigations Ltd.
- 42 Curtis-Summers, S., Montgomery, J., and Carver, M., 2014. Stable isotopic evidence for
43 dietary contrast between Pictish and Medieval populations at Portmahomack, Scotland.
44 *Medieval Archaeology* 58, 21-43.
- 45 Dempson, J.B., Braithwaite, V.A., Doherty, D., and Power, M., 2009. Stable isotope analysis
46 of marine feeding signatures of Atlantic salmon in the North Atlantic. *ICES Journal of Marine*
47 *Science* 67, 52-61.
- 48 DeNiro, M., 1985. Postmortem preservation and alteration in in vivo bone collagen isotope
49 ratios in relation to paleodietary reconstruction. *Nature* 317, 806-809.
- 50 Eerkens, J.W., Sullivan, K., and Greenwald, A.M., 2016. Stable isotope analysis of serial
51 samples of third molars as insight into inter-and intra-individual variation in ancient diet.
52 *Journal of Archaeological Science: Reports* 5, 656-663.

1 Farquhar, G.D., Ehleringer, J.R., and Hubick, K.T., 1989. Carbon isotope discrimination and
2 photosynthesis. *Annual Review of Plant Biology*, 40 (1), 503-537.

3 Forrest, I., 2010. The politics of burial in Late Medieval Hereford. *English Historical Review*,
4 Vol. CXXV 516, 1110-1138.

5 Fuller, B.T., Fuller, J.L., Sage, N.E., Harris, D.A., O'Connell, T.C., and Hedges, R.E., 2004.
6 Nitrogen balance and $\delta^{15}\text{N}$: why you're not what you eat during pregnancy. *Rapid*
7 *Communications in Mass Spectrometry* 18 (23), 2889-2896.

8 Fuller, B.T., Fuller, J.L., Sage, N.E., Harris, D.A., O'Connell, T.C., and Hedges, R.E., 2005.
9 Nitrogen balance and $\delta^{15}\text{N}$: why you're not what you eat during nutritional stress. *Rapid*
10 *Communications in Mass Spectrometry* 19 (18), 2497-2506.

11 Fuller, B.T., Fuller, J.L., Harris, D.A., and Hedges, R.E., 2006. Detection of breastfeeding
12 and weaning in modern human infants with carbon and nitrogen stable isotope ratios.
13 *American Journal of Physical Anthropology* 129, 279-293.

14 Hedges, R., Clement, J.G., David, C., Thomas, L., and O'Connell, T., 2007. Collagen
15 turnover in the adult femoral mid-shaft: modeled from anthropogenic radiocarbon tracer
16 measurements. *American Journal of Physical Anthropology* 133 (2), 808-816.

17 Henderson, R.C., Lee-Thorp, J.A., and Loe, L., 2014. Early life histories of the London poor
18 using $\delta^{13}\text{C}$ and $\delta^{15}\text{N}$ stable isotope incremental dentine sampling. *American Journal of*
19 *Physical Anthropology* 154 (4), 585-593.

20 Hurst, D., Baxter, I., Boylston, A., Pearson, E., and Weston, D., 2003. *Mappa Mundi Archive*,
21 Hereford: assessment and updated project design. Unpublished report. Worcestershire
22 Archaeological Service.

23 Katzenberg, M.A., Lovell, N.C., 1999. Stable isotope variation in pathological bone.
24 *International Journal of Osteoarchaeology* 9 (5), 316-324.

25 Lee-Thorp, J.A., 2008. On isotopes and old bones. *Archaeometry* 50 (6), 925-950.

26 McCutchan, J.H., Lewis, W.M., Kendall, C., and McGrath, C.C., 2003. Variation in trophic
27 shift for stable isotope ratios of carbon, nitrogen, and sulfur. *Oikos*, 102 (2), 378-390.

28 Longin, R., 1971. New method of collagen extraction for radiocarbon dating: *Nature* 230,
29 241-242.

30 Mekota, A.M., Grupe, G., Ufer, S., and Cuntz, U., 2006. Serial analysis of stable nitrogen
31 and carbon isotopes in hair: monitoring starvation and recovery phases of patients suffering
32 from anorexia nervosa. *Rapid Communications in Mass Spectrometry* 20 (10), 1604-
33 1610.

34 Minagawa, M., and Wada, E., 1984. Stepwise enrichment of ^{15}N along food chains:
35 further evidence and the relation between $\delta^{15}\text{N}$ and animal age. *Geochimica et*
36 *Cosmochimica Acta* 48 (5), 1135-1140.

37 Montgomery, J., Beaumont, J., Jay, M., Keefe, K., Gledhill, A., Cook, G., Dockrill S., and
38 Melton, N., 2013. Strategic and sporadic marine consumption at the onset of the Neolithic:
39 increasing temporal resolution in the isotope evidence. *Antiquity* 87, 1060-1072.

40 Müldner, G and Richards, M.P., 2005. Fast or feast: reconstructing diet in later Medieval
41 England by stable isotope analysis. *Journal of Archaeological Science* 32, 39-48.

42 Müldner, G. and Richards, M. P., 2006. Diet in Medieval England: the evidence from stable
43 isotopes. In: Woolgar, C., Serjeantson, D. and Waldron, T. (eds.), *Food in Medieval England:*
44 *History and Archaeology*. Oxford: Oxford University Press, 228-238.

45 Müldner, G., and Richards, M., 2007a. Stable isotope evidence for 1500 years of human diet
46 at the city of York, UK. *American Journal of Physical Anthropology* 133, 681-697.

47 Müldner, G., and Richards, M., 2007b. Diet and diversity at Later Medieval Fishergate: the
48 isotopic evidence, *American Journal of Physical Anthropology* 134, 162-174.

49 Patrick, P., 2014. *The 'Obese Medieval Monk' A multidisciplinary study of a stereotype*.
50 Oxford: Archaeopress BAR British Series, 590.

51 Pearson, J.A., Haddow, S.D., Hillson, S.W., Knüsel, C.J., Larsen, C.S., and Sadvari, J.W.,
52 2015. Stable carbon and nitrogen isotope analysis and dietary reconstruction through the life
53 course at Neolithic Çatalhöyük, Turkey. *Journal of Social Archaeology* 15 (2) 210-232.

54 Price, J., 1795. *An Historical Account of the City of Hereford. With some Remarks on the*
55 *River Wye, and the Natural and Artificial Beauties Contiguous to its Banks, from Brobery to*
Wilton. Hereford: D. Walker.

1 Reitsema, L.J., 2013. Beyond diet reconstruction: stable isotope applications to human
2 physiology, health, and nutrition. *American Journal of Human Biology* 25(4), 445-456.
3 Reitsema, L.J., and Muir, A.B., 2015. Growth, velocity and weaning $\delta^{15}\text{N}$ "dips" during
4 ontogeny in *Macaca mulatta*. *American Journal of Physical Anthropology* 157 (2), 347-357.
5 Reynard, L., and Tuross, N., 2015. The known, the unknown and the unknowable: weaning
6 times from archaeological bones using nitrogen isotope ratios. *Journal of Archaeological*
7 *Science* 53, 618-625.
8 Richards, M., Mays, S., Fuller, B., 2002. Stable carbon and nitrogen isotope values of bone
9 and teeth reflect weaning age at the Medieval Wharram Percy site, Yorkshire, UK. *American*
10 *Journal of Physical Anthropology* 119, 205-210.
11 Roberts, C., (2005). The human skeletal report. Appendix to Crooks K.H. Excavations at
12 Hereford, County Hospital. Report SMR 31923. Archaeological Investigations Ltd.
13 Roth, J.D., and Hobson, K.A., 2000. Stable carbon and nitrogen isotopic fractionation
14 between diet and tissue of captive red fox: implications for dietary reconstruction. *Canadian*
15 *Journal of Zoology* 78, 848-852.
16 Sandberg, P.A., Sponheimer, M., Lee-Thorp, J., and van Gerven, D., 2014. Intra-tooth stable
17 isotope analysis of dentine: a step toward addressing selective mortality in the reconstruction
18 of life history in the archaeological record. *American Journal of Physical Anthropology* 155
19 (2), 281-293.
20 Schoeninger, M.J., and DeNiro, M.J., 1984. Nitrogen and carbon isotopic composition of
21 bone collagen from marine and terrestrial animals. *Geochimica et Cosmochimica Acta*
22 48, 625-639.
23 Stott, A.W., Evershed, R.P., Jim, S., Jones, V., Rogers, J.M., Tuross, N., and Ambrose, S.,
24 1999. Cholesterol as a new source of palaeodietary information: experimental approaches
25 and archaeological applications. *Journal of Archaeological Science* 26 (6), 705-716.
26 Thompson, A.H., Chaix, L., and Richards, M.P, 2008. Stable isotopes and diet at ancient
27 Kerma, Upper Nubia (Sudan). *Journal of Archaeological Science* 35 (2), 376-387.
28 van der Sluis, L.G., Reimer, P.J., and Lynnerup, N., 2015. Investigating intra-individual
29 dietary changes and ^{14}C ages using high-resolution $\delta^{13}\text{C}$ and $\delta^{15}\text{N}$ isotope ratios and ^{14}C
30 ages obtained from dentine increments. *Radiocarbon* 57 (4), 665-677.
31 Trueman, C.N., McGill, R.A., and Guyard P.H., 2005. The effect of growth rate on tissue-diet
32 isotopic spacing in rapidly growing animals. An experimental study with Atlantic salmon
33 (*Salmo salar*). *Rapid Communications in Mass Spectrometry* 19 (22), 3239-3247.
34 van Klinken, G.J., 1999. Bone collagen quality indicators for paleodietary and radiocarbon
35 measurements. *Journal of Archaeological Science* 26 (6), 687-695.
36 Waters-Rist, A.L, and Katzenberg, M.A., 2010. The effect of growth on stable nitrogen
37 isotope ratios in subadult bone collagen. *International Journal of Osteoarchaeology* 20 (2),
38 172-191.
39 Werner, R. A., and Brand, W.A., 2001. Referencing strategies and techniques in stable
40 isotope ratio analysis. *Rapid Communications in Mass Spectrometry* 15 (7), 501-519.
41 Wood, J.W., Milner, G.R., Harpending, H.C., Weiss, K.M., Cohen, M.N., Eisenberg, L.E.,
42 Hutchinson, D.L., Jankauskas, R., Česnys, G., Katzenberg, M.A., Lukacs, J.R., McGrath,
43 J.W., Roth, E.A., Ubelaker, D.H., and Wilkinson, R.G., 1992. The osteological paradox:
44 problems of inferring prehistoric health from skeletal samples [and comments and reply].
45 *Current Anthropology* 33 (4), 343-370.
46 Woolgar, C.M., Serjeantson, D., and Waldron, T., (2006). *Food in Medieval England. Diet*
47 *and Nutrition*. New York: Oxford University Press.
48

1 Tables

2 Table 1 1.5 columns

3

4 *Table 1. Tooth samples including estimated primary dentine loss through abrasion. Age*
5 *categories: OA = Old Adult, MMA = Middle Aged Adult; M= Male; F=Female.*

6

Skeleton ID	Sex	Age	Sample No.	Sample Type	Estimated Dentine Lost (mm)
HERF 4001	M	OA	150	Lower Left Canine	2
			145	Lower Right M3	0
HERF 5001	M	MAA	149	Lower Left Canine	0
			146	Lower Left M3	2
HERF 9515	M	OA	147	Lower Left Canine	0
			144	Lower Left M3	2
HERF 9526	M?	OA	142	Lower Left Canine	1
			148	Lower Left M3	0
HERF 9543	F	OA	141	Lower Left Canine	0
			143	Lower Left M3	1

7

1 Table 2 2 columns

2
3
4
5
6
7
8
9

Table 2: Results of carbon and nitrogen isotope analysis of the rib and cortical bone samples from Hereford. Age categories: OA = Old Adult, YMA = Young Middle-Aged Adult, MAA = Middle Aged Adult, OMA = Old Middle-Aged Adult, A = Adult, YA = Young Adult. Site Categories: SGP.LM = St. Guthlac's Priory, Late Medieval, CC.LM = Cathedral Close, Late Medieval (mass graves), CC.EM = Cathedral Close, Early Medieval; M= Male; F=Female. Notes include observations on location and pathologies, signs of coffins, cists or grave position and sample type.

Skeleton ID	Site	Sex	Age	Notes and sample type	$\delta^{13}\text{C}$ (‰)	$\delta^{15}\text{N}$ (‰)
HERF 1301	SGP.LM	F	YA	S end piles. Dental pathology and trauma. Does not fit grave. Rib.	-19.3	11.2
HERF 1303	SGP.LM	F	MAA	S end piles. Dental pathology. Arms crossed. Rib.	-19.3	10.9
HERF 1801	SGP.LM	?	8-10yr	S end (west) piles. Askew in grave. Rib.	-19.3	8.3
HERF 2301	SGP.LM	?	8-10yr	S End piles. Rib.	-19.4	12.0
HERF 2302	SGP.LM	M	YA	S end piles. Dental pathology. Praying position. Rib.	-19.3	9.6
HERF 2320	SGP.LM	F	OA	S end piles. Infection. Does not fit grave. Rib.	-19.3	11.2
HERF 4001	SGP.LM	M	YA	S end drain run. Pathologies. Rib.	-19.3	11.4
HERF 5001	SGP.LM	M	MAA	S end footing. Possible coffin. Anaemic. Rib.	-19.3	11.9
HERF 6001	SGP.LM	M	OA	S end footing. Coffin nail found. Rib.	-19.9	10.7
HERF 7001	SGP.LM	M	A	S end Later phase. Rib.	-19.8	11.2
HERF 7002	SGP.LM	M	A	S end Early phase. Femur.	-19.1	10.3
HERF 7003	SGP.LM	F	YA	S end Early phase. Rib.	-19.2	10.6
HERF 8101	SGP.LM	?	3-6yr	N west. Possible coffin. Earlier burial. Rib.	-19.6	9.2
HERF 8112	SGP.LM	M	A	N west. Grave aligned NS. Early grave. Rib.	-20.4	10.7
HERF 8113	SGP.LM	?M	A	N West. Fragmentary remains. Cortical bone.	-18.8	11.0
HERF 8114	SGP.LM	F	YA	N West. Infection. Tooth decay. Cortical bone.	-19.3	9.0
HERF 8115	SGP.LM	?	6-8yr	N West. Anaemia. Rib.	-19.4	11.5
HERF 8301	SGP.LM	M	A	N Central. Infection. Legs in bent position. Femur.	-19.5	10.3
HERF 8307	SGP.LM	?F	YA	N Central. Cist. Rib.	-20.1	10.1
HERF 8308	SGP.LM	?	A	N Central. Coffin. Infection. Tibia.	-19.4	9.8
HERF 8501	SGP.LM	F	YA	Rib.	-20.1	8.9

HERF 9501	SGP.LM	M	YA	N Central/Road. Coffin. Anaemia. Rib.	-19.0	13.3
HERF 9502	SGP.LM	?	?	N Road. Phase 3. Coffin. Cortical bone.	-18.5	12.7
HERF 9510	SGP.LM	F	YA	N Road. Cist. Pathologies. Rib.	-19.1	11.5
HERF 9515	SGP.LM	M	OA	N Road. Coffin. Chalice in grave. Rib.	-19.3	11.1
HERF 9526	SGP.LM	M	OA	N Road. Large Coffin. Praying position. Rib.	-18.1	13.1
HERF 9529	SGP.LM	M	YA	N Road. Phase 3. Pathology. Rib.	-19.9	12.6
HERF 9534	SGP.LM	?	12-13yr	N road. Phase 2. Coffin. Rib.	-19.3	11.2
HERF 9543	SGP.LM	F	OA	N road. Phase 2. No nails. Rib.	-19.5	12.0
HFD 739	CC.LM	F	OMA	Rib.	-19.7	11.1
HFD 1650	CC.LM	M	YA	Rib.	-19.7	10.8
HFD 1886	CC.LM	F	OMA	Rib.	-20.2	8.9
HFD 2054	CC.LM	M	OMA	Rib.	-19.2	11.1
HFD 2599	CC.LM	M	OMA	Rib.	-19.3	10.0
HFD 2749	CC.LM	F	OA	Rib.	-19.4	10.3
HFD 2831	CC.LM	M	OMA	Rib.	-20.3	8.5
HFD 2862	CC.LM	M	OMA	Rib.	-18.8	12.0
HFD 3152	CC.LM	F	YMA	Rib.	-19.4	10.5
HFD 3221	CC.LM	F	YMA	Rib.	-19.7	10.7
HFD 3732	CC.EM	F	OA	Rib.	-20.1	10.6
HFD 3734	CC.EM	M	OA	Rib.	-19.7	10.7
HFD 3917	CC.EM	M	OMA	Rib.	-19.3	11.9
HFD 4093	CC.EM	F	OMA	Rib.	-19.7	10.0
HFD 4116	CC.EM	F	OA	Rib.	-19.5	10.7
HFD 4145	CC.EM	F	OMA	Face down (reburial). Rib.	-19.6	9.8
HFD 4191	CC.EM	M	YMA	Rib	-19.3	10.8
HFD 4243	CC.EM	?F	OA	Rib	-19.8	9.3
HFD 4375	CC.EM	?M	A	Rib	-19.7	10.0

1

1 Table 3 1 column

2
3
4
5
6
7
8
9

Table 3: Kruskal-Wallis H test results, with significance level (α) at 0.05 for the null-hypothesis that samples represent statistics from identical populations, with chance variation, using IBM SPSS (24.0). No significant difference detected between any samples. SGP.LM = St. Guthlac's Priory, Late Medieval, CC.LM = Cathedral Close, Late Medieval (mass graves), CC.EM = Cathedral Close, Early Medieval; YA = Young Adult; A = Adult; MAA = Middle Aged Adult; YMA = Young Middle-Aged Adult; OMA = Old Middle-Aged Adult; OA = Old Adult.

Samples	$\delta^{15}\text{N}$ (‰)	$\delta^{13}\text{C}$ (‰)
	p-value	
SGP.LM, CC.LM and CC.EM	0.167	0.102
Males/probable males and females/probable females	0.089	0.088
Children/non-adults/YA and A/MAA/YMA/OMA/OA	0.885	0.263

10
11

1 Table 4 2 columns

2

3 Table 4: Summary statistics of specific demographics in Hereford populations. SGP.LM = St.
 4 Guthlac's Priory, Late Medieval, CC.LM = Cathedral Close, Late Medieval (mass graves),
 5 CC.EM = Cathedral Close, Early Medieval; YA = Young Adult; YMA = Young Middle-Aged
 6 Adult; A = Adult; MAA = Middle Aged Adult; OMA = Old Middle Aged Adult; OA = Old Adult;
 7 M= Male; F=Female.

Site Code	SGP.LM	CC.LM	CC.EM	Males	Females	Children+ Non- adults+ YA	A + MAA+ YMA+ OMA+ OA
Period	Late Medieval	Late Medieval	Early Medieval	All	All	All	All
Demographic	Adults and Children	Adults	Adults	Adults	Adults	Adults	Adults
$\delta^{15}\text{N}$ (‰)							
Min	8.3	8.5	9.3	8.5	8.9	8.3	8.5
Mean	10.9	10.4	10.4	11.0	10.5	10.7	10.7
Max	13.3	12.0	11.9	13.4	12.6	13.3	13.1
St. Dev.	1.2	1.1	0.8	1.1	1.0	1.4	1.0
M Mean	11.4	10.5	10.9				
F Mean	10.7	10.3	10.1				
$\delta^{13}\text{C}$ (‰)							
Min	-20.4	-20.3	-20.1	-20.5	-20.2	-20.1	-20.4
Mean	-19.4	-19.6	-19.6	-19.4	-19.6	-19.5	-19.5
Max	-18.1	-18.8	-19.3	-18.1	-19.1	-19.0	-18.1
St. Dev.	0.5	0.5	0.3	0.5	0.3	0.3	0.5
M Mean	-19.3	-19.5	-19.5				
F Mean	-19.5	-19.7	-19.7				

8

1 Table 5 2 columns

2

3 Table 5: Contextual information and summary statistics of stable isotopic values for Late
 4 Medieval English burial populations. Citations: 1) Müldner and Richards, 2005 2) Müldner
 5 and Richards, 2007b 3) Richards et al., 2002.

Site Name	St Guthlac's Priory	Cathedral Close	Warrington	Fishergate	St.Giles	St. Martin's
Location	Hereford Herefordsh.	Hereford Herefordsh.	Warrington Cheshire	York N Yorkshire	Skelton N Yorkshire	Wharram Percy N Yorkshire
Century (A.D.)	12th-15th	—	13th - 17th	13th-16th	12th-15th	10th-18th
Site Role	Urban Priory	Cathedral	Urban Friary	Urban Priory	Rural Hospital	Rural Parish Church
Citation	This Paper	This Paper	1	2	1	3
N	29	19	18	154	17	26
Demo-graphic	Adults and Children	Adults	Adults	Adults	Adults	Adults
$\delta^{15}\text{N}$ (‰)						
Min	8.3	8.5	10.6	9.1	10.9	6.0
Mean	10.9	10.4	12.0	12.8	12.5	9.1
Max	13.3	12.0	13.9	17.2	13.8	11.0
St.Dev.	1.2	0.9	1.0	1.3	0.8	1.2
$\delta^{13}\text{C}$ (‰)						
Min	-20.4	-20.3	-20.6	-20.8	-20.1	-20.2
Mean	-19.4	-19.6	-19.8	-19.1	-19.1	-19.7
Max	-18.1	-18.8	-18.8	-16.5	-18.3	-18.7
St.Dev.	0.5	0.4	0.5	0.6	0.5	0.4

6

1 **Figures**

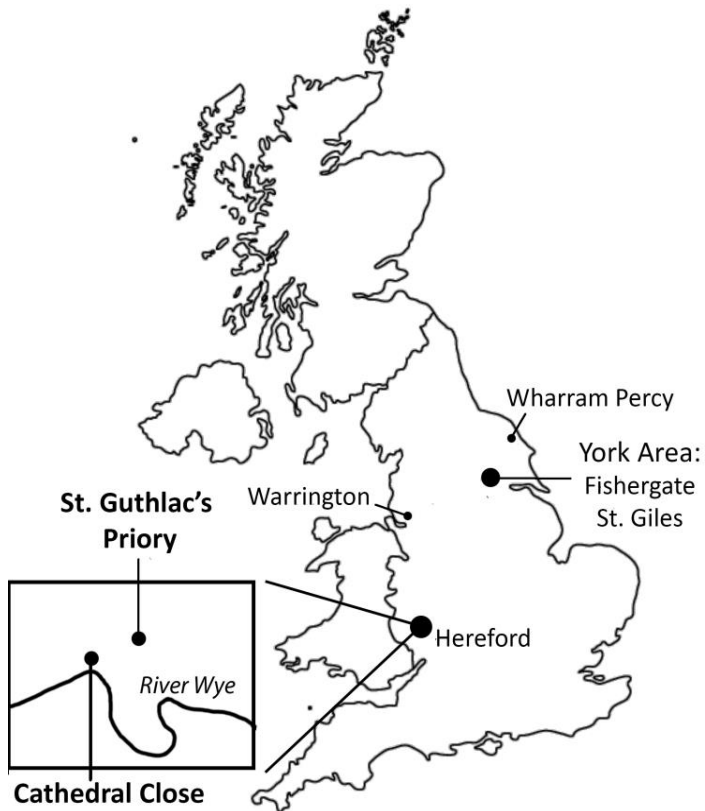
2

3 **Figure 1** 1.5 columns

4

5 *Figure 1: Map noting archaeological sites mentioned in the paper.*

6



7

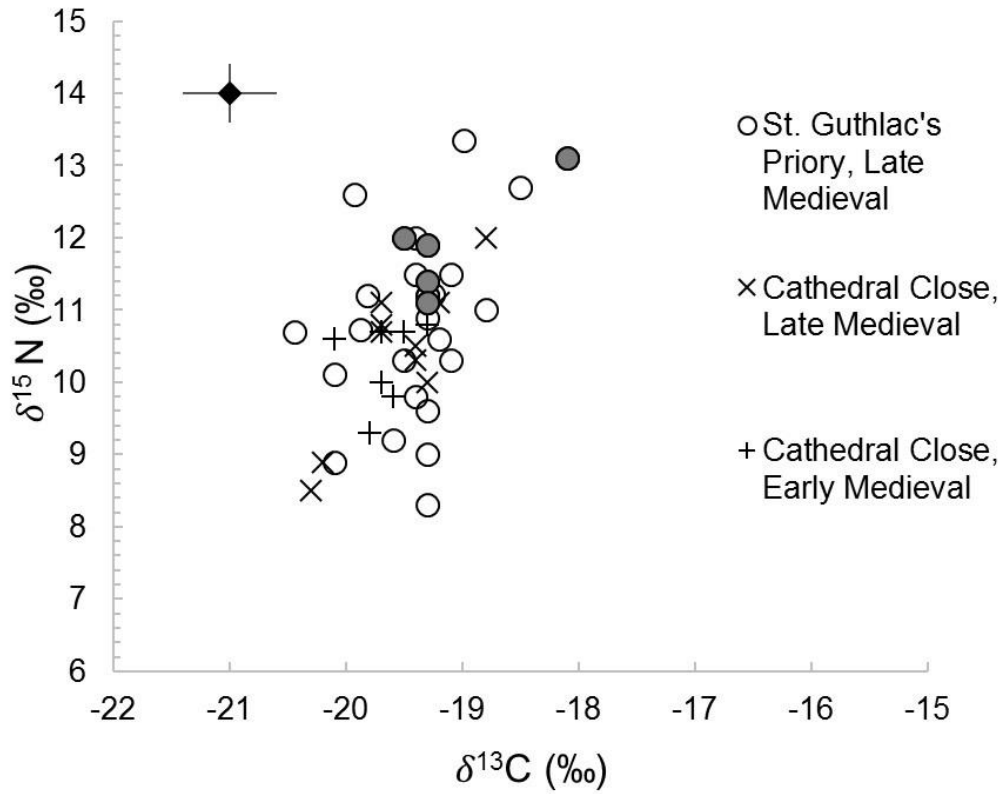
8

9

1 Figure 2 1 column

2 Figure 2: Bulk bone stable isotope values from all Hereford populations. Individuals whose
3 incremental dentine values were analysed are shaded. Analytical error in top left corner at 2
4 s.d.

5
6

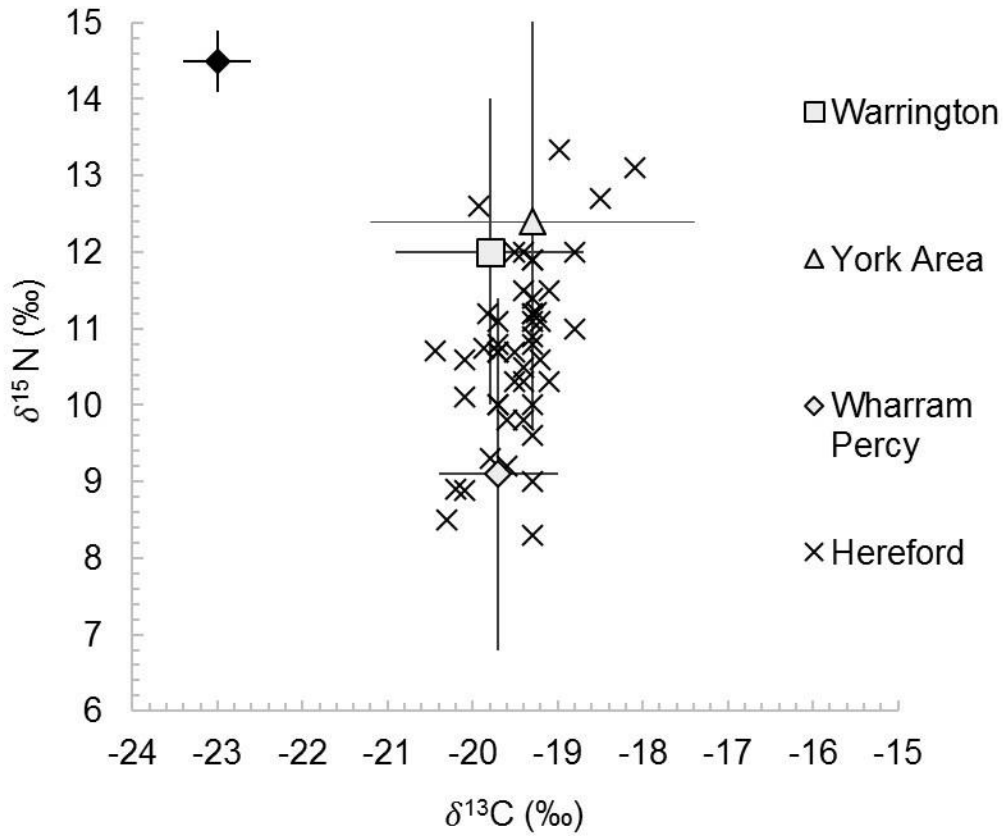


7
8
9
10

1 Figure 3 1 column

2

3 Figure 3: $\delta^{13}\text{C}$ and $\delta^{15}\text{N}$ values of Hereford bulk bone results compared to mean and 1 s.d.
4 values of assemblages from York and Wharram Percy, Yorkshire and Warrington, Cheshire
5 (Müldner and Richards, 2005, 2007a, 2007b; Richards et al., 2002). Analytical error in top
6 left corner at 2 s.d.
7



8

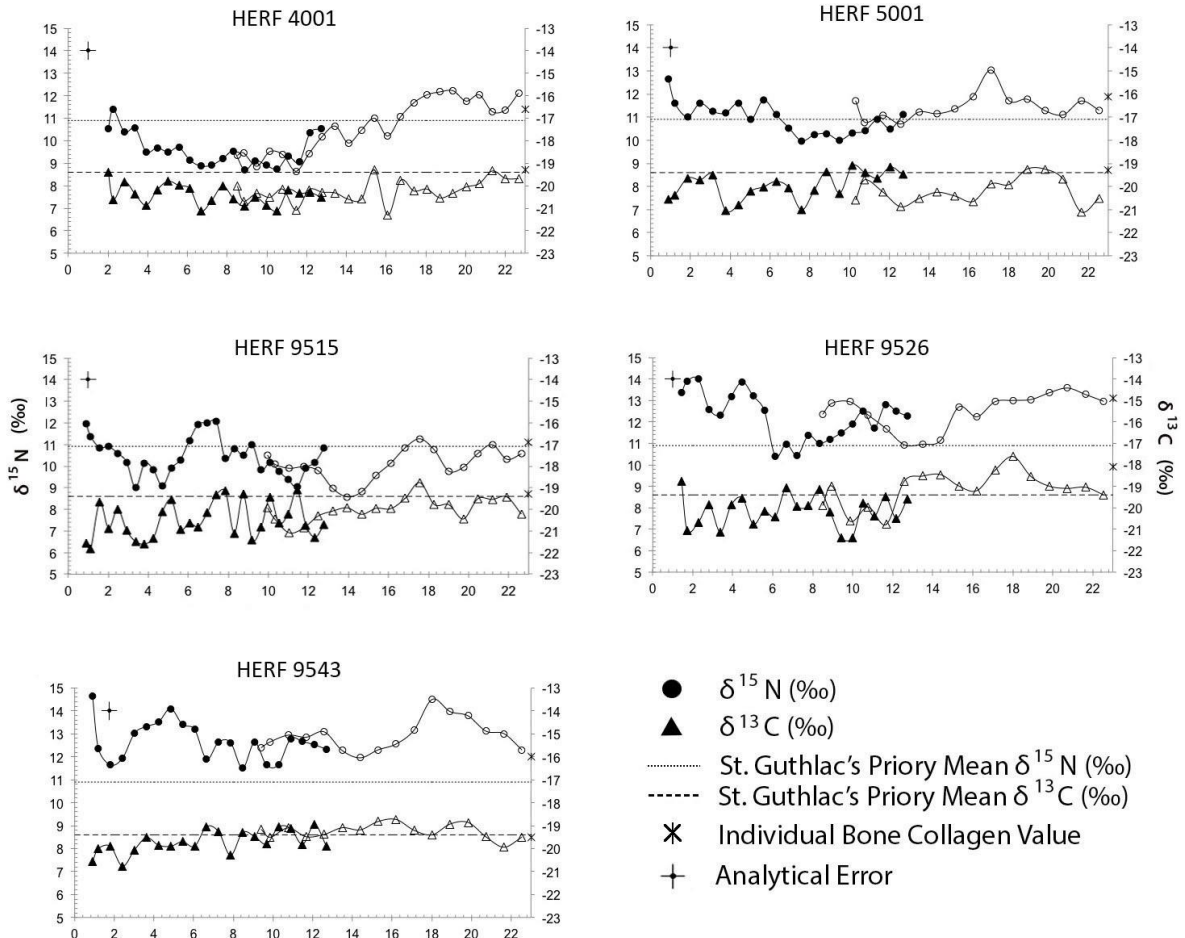
9

1 Figure 4 **2 columns**

2

3 *Figure 4: Incremental dentine stable isotope values inferred to individual approximate age in*
 4 *years. Each graph depicts one individual, with $\delta^{15}\text{N}$ values above with left axis values, and*
 5 *$\delta^{13}\text{C}$ values below with right axis values. Canine values are filled, while m3 values are not. X*
 6 *axis represents approximate age in years as calculated using equations 2 and 3. Analytical*
 7 *errors in top left corner at 2 s.d.*

8



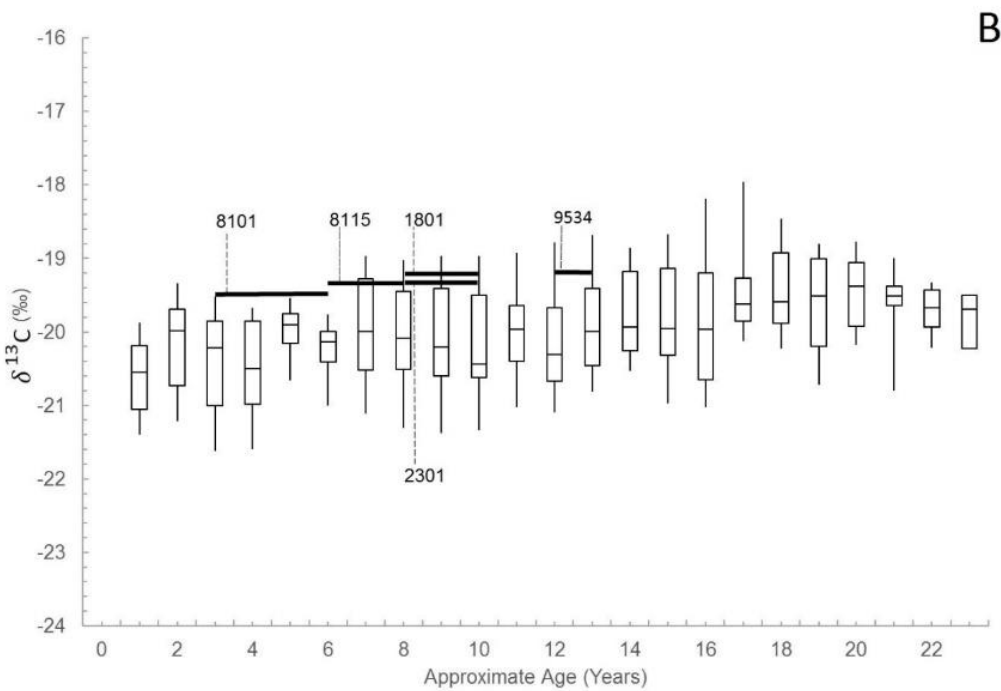
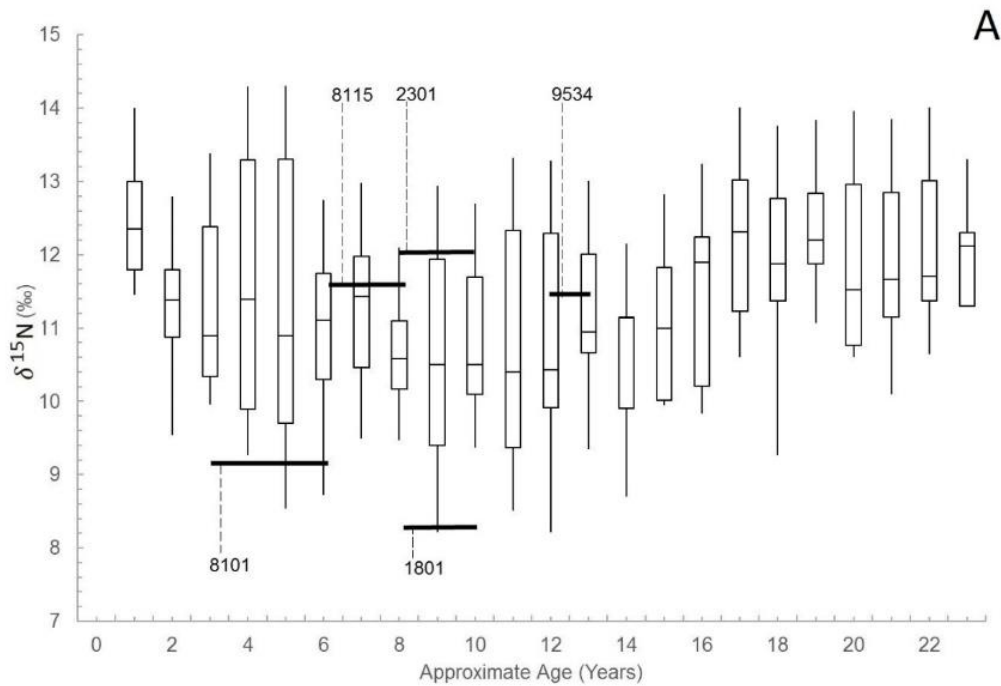
9
10

1 Figure 5 **2 columns**

2

3 *Figure 5: box and whisker plot of all incremental dentine $\delta^{15}\text{N}$ and $\delta^{13}\text{C}$ values at calculated*
4 *approximate age in years, with bone values of children from St. Guthlac's population overlain*
5 *at the appropriate age range.*

6



7

8