


A Late Pleistocene channelized subglacial meltwater system on the Atlantic continental shelf south of Ireland

CRISTIANA GIGLIO , SARA BENETTI, FABIO SACCHETTI, EDWARD LOCKHART, JOHN HUGHES CLARKE, RUTH PLETS, KATRIEN VAN LANDEGHEM, COLM Ó COFAIGH, JAMES SCOURSE AND PAUL DUNLOP

BOREAS



Giglio, C., Benetti, S., Sacchetti, F., Lockhart, E., Hughes Clarke, J., Plets, R., Van Landeghem, K., Ó Cofaigh, C., Scourse, J. & Dunlop, P. 2022 (January): A Late Pleistocene channelized subglacial meltwater system on the Atlantic continental shelf south of Ireland. *Boreas*, Vol. 51, pp. 118–135. <https://doi.org/10.1111/bor.12536>. ISSN 0300-9483.

The study of palaeo-glacial landforms and sediments can give insights into the nature and dynamics of ice sheets. This is particularly the case with regards to the subglacial record, which is challenging to observe in contemporary glaciated settings and hence remains only partially understood. The subglacial hydrological system is an essential component of ice dynamics, where increased water pressure enhances ice motion and sediment deformation, thus reducing ice-bed contact. Tunnel valleys are large, sinuous, steep-sided incisions that, together with smaller scale meltwater channels, indicate subglacial meltwater discharge beneath large ice sheets. Through the use of high-resolution marine geophysical data, a system of buried and exposed tunnel valleys, possible subglacial or proglacial meltwater channels and palaeo-fluvial valleys have been identified across the shelf of the Celtic Sea between Ireland and Britain. The presence of steep-sided and overdeepened tunnel valleys is indicative of a large channelized meltwater drainage system beneath the former Irish Sea Ice Stream, the most extensive ice stream to drain the last British–Irish Ice Sheet. After the rapid ice expansion across the Celtic Sea shelf around 28–26 ka, the tunnel valleys were carved into both bedrock and glacial sediments and are associated with rapid ice stream retreat northwards into the Irish Sea Basin between 25.6 and 24.3 ka. The presence of a major subglacial meltwater system on the relatively shallow shelf suggests that significant erosive meltwater discharge occurred during the last deglaciation and highlights the important contribution of meltwater to the retreat of the British–Irish Ice Sheet on the continental shelf.

Cristiana Giglio (giglio-c@ulster.ac.uk), Sara Benetti, Paul Dunlop and Ruth Plets, School of Geography and Environmental Sciences, Ulster University, Cromore Road, BT52 1SA Coleraine, Northern Ireland and Flanders Marine Institute, Wandelaarkaai 7, 8400 Oostende, Belgium; Fabio Sacchetti, Marine Institute of Ireland, Rinville, H91 R673, Oranmore, Co. Galway Ireland; Edward Lockhart, ABP Marine Environmental Research, Southampton SO14 2AQ, UK; John Hughes Clarke, Center for Coastal and Ocean Mapping, Mechanical Engineering and Earth Sciences, University of New Hampshire, 24 Colovos Road, Durham, New Hampshire 03824, USA; Katrien Van Landeghem, School of Ocean Sciences, Bangor University, Menai Bridge LL59 5AB, UK; Colm Ó Cofaigh, Department of Geography, Durham University, Durham DH1 3LE, UK; James Scourse, College of Life and Environmental Sciences, University of Exeter, Penryn, Cornwall TR10 9EZ, UK; received 24th February 2021, accepted 12th May 2021.

During the last glaciation, the Irish and Celtic Seas (Fig. 1) were occupied by the British–Irish Ice Sheet (BIIS), the westernmost ice mass of the Eurasian Ice Sheet (Hughes *et al.* 2016). With an extensive marine-terminating margin, the BIIS attained a shelf-edge position along the western Atlantic margin around 27–25 ka and the Irish Sea Ice Stream (ISIS) was its largest outlet (Knutz *et al.* 2001; Scourse *et al.* 2009, 2019; Chiverrell *et al.* 2013; Smedley *et al.* 2017b; Lockhart 2019; Fig. 1). Following advance to its maximum extent at 25.6 ± 0.5 ka, the ISIS retreated from the shelf edge of the Celtic Sea back into the Irish Sea Basin (ISB; Fig. 1) by 24.3 ± 0.2 ka (Small *et al.* 2018). Here, the pace of retreat decelerated due to topographic controls, a fall in relative sea level and reduced palaeotidal amplitude (Ward *et al.* 2016; Scourse *et al.* 2019; Coughlan *et al.* 2020; Van Landeghem & Chiverrell 2020). Although the ISIS occupied a large area (likely over 50 000 km²), its geomorphological record on the sea floor remains poorly defined. This, in part, is due to the presence of a series of mega-ridges dominating the present-day sea floor of the Celtic Sea shelf. These may relate, at least in part, to postglacial mega-tidal processes (Scourse *et al.* 2009;

Lockhart *et al.* 2018) and hence overprint the glacial landform record.

Elsewhere in the Irish and Celtic Seas, several large, overdeepened valleys have previously been identified and interpreted as tunnel valleys. Wingfield (1989) undertook an early geomorphological characterization of these channels and classified them into three generations spanning up to four glacial phases (Late Elsterian, Saalian and Weichselian glaciations; <500 000 years ago). This work attracted a critical response, especially with regard to adjacent incisions mapped in the English Channel, where sedimentological and other evidence demonstrated a fluvial origin of the channels (Hamblin *et al.* 1990). More recent studies have demonstrated that the overdeepened Irish Sea valleys were formed as time-transgressive erosional features during the last glacial period (Callaway *et al.* 2011; Coughlan *et al.* 2020; Van Landeghem & Chiverrell 2020).

Tunnel valleys are large, overdeepened channels of variable dimensions – lengths greater than 100 km, widths of up to 10 km and depths of 500 m – incised into bedrock or soft sediments (e.g. Ó Cofaigh 1996; van der Vegt *et al.* 2012). They present dendritic or anastomosing

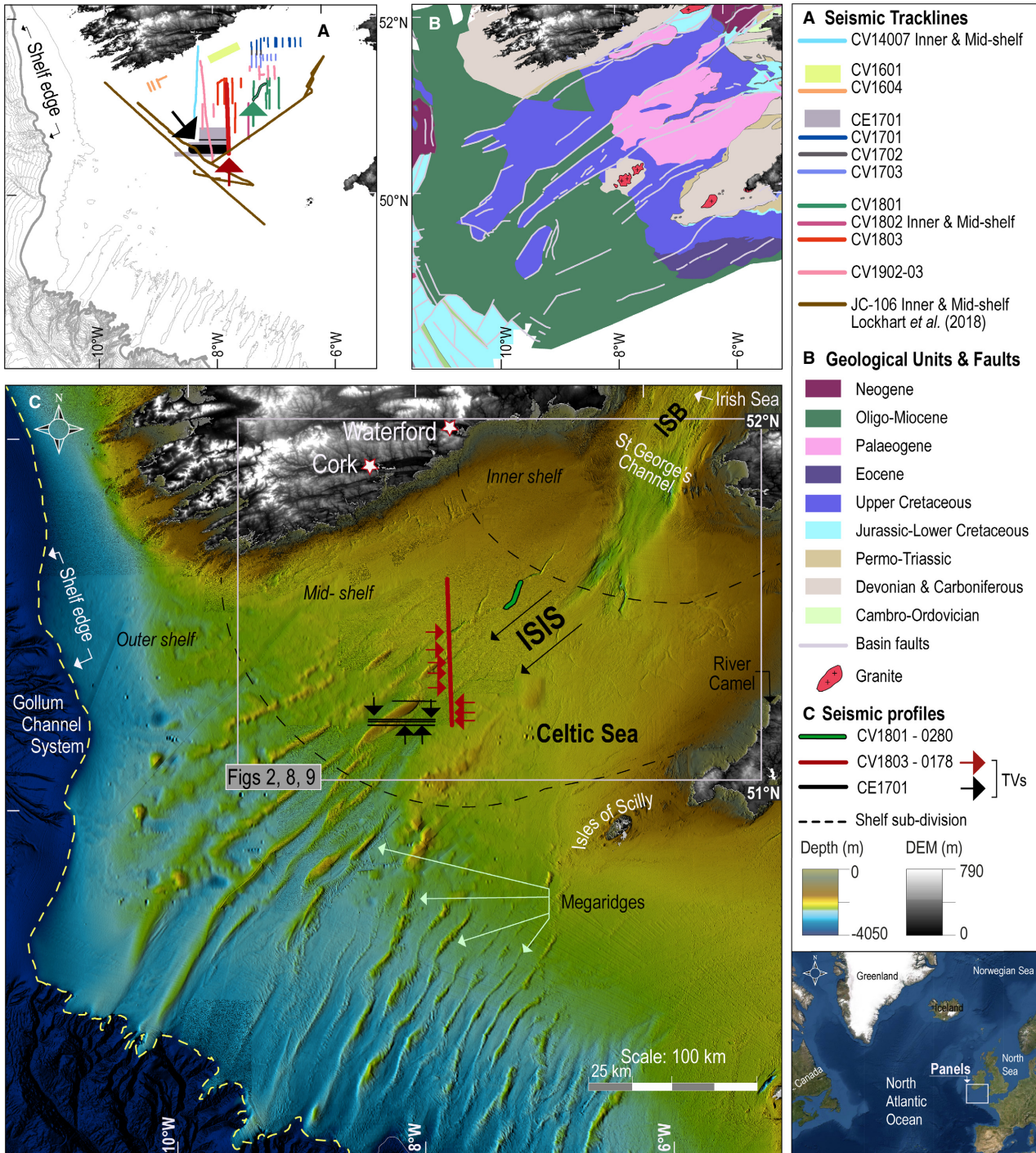


Fig. 1. Location of the study area on the Celtic Sea continental shelf. A. The seismic data sets used in this study. The large green, red and black arrows point to the thick lines (same colour-coding) that correspond to the location of the seismic profiles shown in Figs 4, 6. B. Main geological units and faults (BGS; GSI). C. Bathymetry including a sub-division of the shelf into outer, mid- and inner as demarcated by the dotted black lines. The green, red and black lines refer to the location of the seismic profiles (discussed in Figs 4, 6), with red and black arrows pointing to the presence of exposed and buried tunnel valleys, respectively. Representative mega-ridges are indicated by white arrows. Key geographical areas are labelled as well as the former flow direction of the Irish Sea Ice Stream (ISIS) (black arrows). ISB = Irish Sea Basin; TVs = Tunnel valleys.

patterns, can have overhanging tributaries, start and terminate abruptly, and are often associated with subglacial meltwater landforms likely formed close to the ice

margin, such as eskers (Ó Cofaigh 1996; Stackebrandt 2009; van der Vegt *et al.* 2012; Huuse & Kristensen 2016; Montelli *et al.* 2020; Ottesen *et al.* 2020). While there are

several theories about the formation of tunnel valleys, subglacial meltwater is considered the primary erosive agent in their evolution, either as a single or multiple catastrophic events or under more steady-state conditions (Ó Cofaigh 1996; Kehew *et al.* 2012; van der Vegt *et al.* 2012; Livingstone & Clark 2016; Lewington *et al.* 2020). They provide drainage routeways for large volumes of water and sediments at the base of an ice sheet (Ó Cofaigh 1996; Greenwood *et al.* 2016; Livingstone & Clark 2016).

As the subglacial hydrological system is an essential component of ice-sheet drainage, it plays an important role in ice-sheet dynamics (Zwally *et al.* 2002; Price *et al.* 2008; Doyle *et al.* 2014). Subglacial water flow is intimately related to ice-sheet motion (e.g. enhancing glacier sliding) and responsible for subglacial sediment deformation. The investigation of former ice-sheet beds through their geomorphological record is, therefore, an important contribution to the understanding and modelling of the wider significance of subglacial hydrology in the Earth system (Price *et al.* 2008; Dowdeswell *et al.* 2016; Livingstone & Clark 2016).

Recent data from the Celtic and Irish Seas have contributed to an enhanced understanding of the regional reconstruction and ensuing modelling of the former BIIS dynamics (Smedley *et al.* 2017a, b; Chiverrell *et al.* 2018, 2020; Lockhart *et al.* 2018; Small *et al.* 2018; Scourse *et al.* 2019, 2021; Van Landeghem & Chiverrell 2020). A recent synthesis of geochronological data (Scourse *et al.* 2021) demonstrated that the pace of deglaciation within the basin was mainly influenced by internal controls such as topography rather than external forcing.

The aim of this paper is to investigate the formation mechanisms and evolution of a large network of subglacial tunnel valleys across the floor of the Celtic Sea through the spatial integration of new seabed and sub-seabed acoustic data. First, we describe and interpret the geomorphology of the submarine landforms in the context of the regional shallow-acoustic stratigraphy. We then discuss the wider implications of this geomorphology for the dynamics of the former BIIS. The presence of subglacial valleys on the Celtic Sea shelf implies abundant meltwater production and erosion underneath an extensive area (~25 000 km²) of the former ice sheet, perhaps influencing the last retreat of ice from the shelf.

Regional stratigraphy of the Celtic Sea

The regional Quaternary stratigraphy of the Celtic Sea shelf above the acoustic basement is characterized by two vertically stacked units: the glacial Upper Little Sole Formation (ULSFm) and the glacialfluvial or tidal Melville Formation (MFm). These units are mainly located in the mid- and outer shelf and are draped by modern sediment. Together, the ULSFm, MFm and

modern deposits record the transition from glacial to glaciomarine and postglacial sedimentation (Pantin & Evans 1984; Scourse *et al.* 1990, 2018, 2019; Praeg *et al.* 2015; Ward *et al.* 2016; Lockhart *et al.* 2018). On the basis of a single foraminifera assemblage collected from a core on the outer shelf, Pantin & Evans (1984) previously interpreted the ULSFm as Late Pliocene/Early Pleistocene. Whilst the ULSFm unit is mainly exposed on the lowermost section of the mega-ridges, the topmost seismic unit of the ridges has been correlated with the MFm (Pantin & Evans 1984). Unfortunately, no direct geochronological data exist for the MFm.

New geophysical and sediment core data across the Irish–UK Celtic Sea shelf redefined the regional stratigraphical units both spatially and temporally (Lockhart *et al.* 2018), based on their acoustic character, stratigraphical organization of glacial sediments and their association with the mega-ridges on the mid- and outer shelf (Fig. 1; *ibid.*). The revised Celtic Sea stratigraphy (Lockhart *et al.* 2018) suggests that the glacial sediments, attributed as the ULSFm, date to between 27–24.3 ka (Praeg *et al.* 2015; Scourse *et al.* 2019). These often stiff and deformed glacial deposits of the ULSFm record the oscillatory nature of the ice sheet during its Late Pleistocene retreat across the shelf (Scourse *et al.* 2021). The glacial sediments were later partially eroded in the course of the ensuing marine transgression, during which the overlying sand ridges formed on the shelf. The sandy core of the largest ridges is considered to be composed of the MFm, which has an inferred age of 24–13 ka based on dates from underlying (ULSFm) and overlying (modern sediment) units. The uppermost depositional unit is discontinuous and of variable thickness and indicates marine sediment deposition during a continued rising postglacial sea level (Pantin & Evans 1984; Scourse *et al.* 2009). Although these postglacial marine sediments have been chronologically constrained to between 13 and 4 ka on the inner shelf, they lack dating on the mid- to outer shelf, where they are presumed to become older towards the shelf break (Furze *et al.* 2014; Lockhart *et al.* 2018). This postglacial-uppermost unit, overlaying ULSFm and MFm, corresponds to the seismic facies SF1 identified by Lockhart *et al.* (2018).

As a result of this new interpretation of the regional Celtic Sea stratigraphy (Lockhart *et al.* 2018), the revised age of 27–24.3 ka for the ULSFm refutes the previous interpretation of a Late Pliocene/Early Pleistocene age for this unit (Pantin & Evans 1984). In turn, the age of the Melville Formation is now hypothesized to be between 24–14 ka, with the uppermost deposits younger than 13.9 ka (Furze *et al.* 2014; Lockhart *et al.* 2018). As the data used in this paper cross some of the seismic lines presented by Lockhart *et al.* (2018) and Lockhart (2019), we follow their revised stratigraphy to corroborate the interpretation for the sedimentary units found within our data set.

Material and methods

This paper uses low- and high-resolution bathymetry, backscatter and sub-bottom profiler data. Regional multibeam echo-sounder (MBES) bathymetric data were compiled from the EMODnet portal at 115-m spatial resolution (EMODnet Bathymetry Consortium 2018). New, high-resolution MBES and shallow seismic data were collected by the Integrated Mapping for the Sustainable Development of Ireland's Marine Resource (INFOMAR) programme between 2016 and 2019, onboard the Marine Institute of Ireland vessels the RV 'Celtic Explorer' and RV 'Celtic Voyager'. The surveys were conducted using a Kongsberg EM2040 system following hydrographic standard practice IHO S-44 1a (IHO 2020). Bathymetric and backscatter data were delivered at 5-m resolution after processing in CARIS Hips & Sips and QPS FMGT Geocoder, respectively. Shallow seismic data (3.5 kHz) were acquired onboard the RV 'Celtic Explorer' using an IXBlue Echo 3000 (2017 and 2018 data sets) and Knudsen 3260 chirp source, and onboard the RV 'Celtic Voyager' using a Sonar Equipment Services pinger source. Additional seismic data were collected during the BRITICE-CHRONO cruise JC106 of the RRS 'James Cook' in 2014 and CV14007 cruise of the RV 'Celtic Voyager' using a Kongsberg SBP-120 chirp system (2.5–6.5 kHz) and a multi-tip Geo-Source 200-400 sparker, respectively. The JC106 data set (Lockhart *et al.* 2018; Lockhart 2019) was used in this work to extend the mapping of the features, in addition to the INFOMAR and CV14007 sub-bottom data (Fig. 1A).

Global Mapper and ArcGIS were used for geomorphological mapping of spatial data, whereas seismic profiles were visualized and interpreted using IHS Kingdom software. The stratigraphical correlations are based on Lockhart *et al.* (2018; location of their seismic lines is shown in Fig. 1A). Sediment velocity for calculation of depths below the sea floor was estimated to be $\sim 1600 \text{ m s}^{-1}$ after Lockhart *et al.* (2018).

The geomorphological interpretation was carried out using a combination of terrain shading and first terrain derivatives (slope and aspect) and, for the purpose of this paper, was limited to channel-like features. Measurements of individual channel morphology (e.g. width, depth and length) were carried out systematically in ArcGIS and ArcGIS Pro, using the digitized sea floor and buried features. Locations and depths (xyz) of the latter were used to perform accurate georeferenced calculation within ArcGIS. Width (distance between digitized valley shoulders) and absolute depth (i.e. from base to valley shoulder) were computed using semi-automatic tools (i.e. Generate Transect Along Lines, Intersect and Stack Profile) within the GIS suite. The measurements were retrieved from perpendicular segments at 1-km distance along the reach of the channel (centreline), using the minimum and maximum values as

measured in the bathymetric data at each transect. The depth values of the sea floor valleys have been calculated based on the MBES bathymetry; the buried valley depths have been measured from base to valley shoulder within the seismic profiles.

The channel lengths were measured on each channel centreline, representing the polygon main axis derived from the geomorphological analysis. Where two or more minor-branching channels (i.e. tributaries) coalesce, the longest section was used to determine the length.

The orientation measurements of the channels were carried out semi-automatically by dividing the centreline (the main axis of the valleys and ridges) in equal segments (100-m-long units) to capture variations in internal direction along the reach of the channels. The orientation measurements were performed separately for each group of interpreted landforms. Since the ISIS palaeo-ice flow is known across this region to follow a NE–SW trough axis (e.g. Small *et al.* 2018) these orientation measurements are presented as monodirectional rose diagrams. The orientation of the interpreted palaeo-fluvial valleys shows instead the predominant down-slope direction.

Results and interpretation

Analysis of bathymetric and sub-bottom data across the Celtic Sea shelf has revealed a wealth of channels forming a large drainage network on the inner and mid-shelf. In the following sections, the characteristics and distribution of these channels are presented, and their interpretation discussed.

Sea floor drainage network of the inner and mid-shelf

Across the inner and mid-Celtic Sea shelf, around 80 channels are visible on the sea floor on both bathymetric and sub-bottom data. The exposed channels are predominantly SSW oriented, parallel to the southern Irish coastline (Figs 2, 3). The channels are between 2.4–76.1 km long, between 71–2566 m wide, with the tendency to widen towards their termini, and display straight to low sinuosity profiles (Figs 3A, D, S1A, S2A). Their depth, compared to the surrounding sea floor, is on average 3.4 m and the longer channels tend to be slightly deeper reaching up to a maximum of 29.3 m (Figs 3A, B, D, E, S1A). They start and terminate abruptly and show both U-shaped and V-shaped cross-profiles at their termini (Fig. 3A, B and related topographic profiles). They have overdeepened basins along the thalwegs, as shown by both bathymetric and seismic profiles (profiles X–X', Y–Y' and Z–Z', Figs 3B, D, 4B). Several tributary tunnel valleys form a branching/joining geometry pattern linked to the larger tunnel valley (Fig. 3A); whereas some tributaries appear to be overhanging valleys positioned above the main channel (Fig. 3B, D).

The gradient of the channel sides is generally steep (7° – 9°) with a subtle terracing on the sides (Fig. 3D,

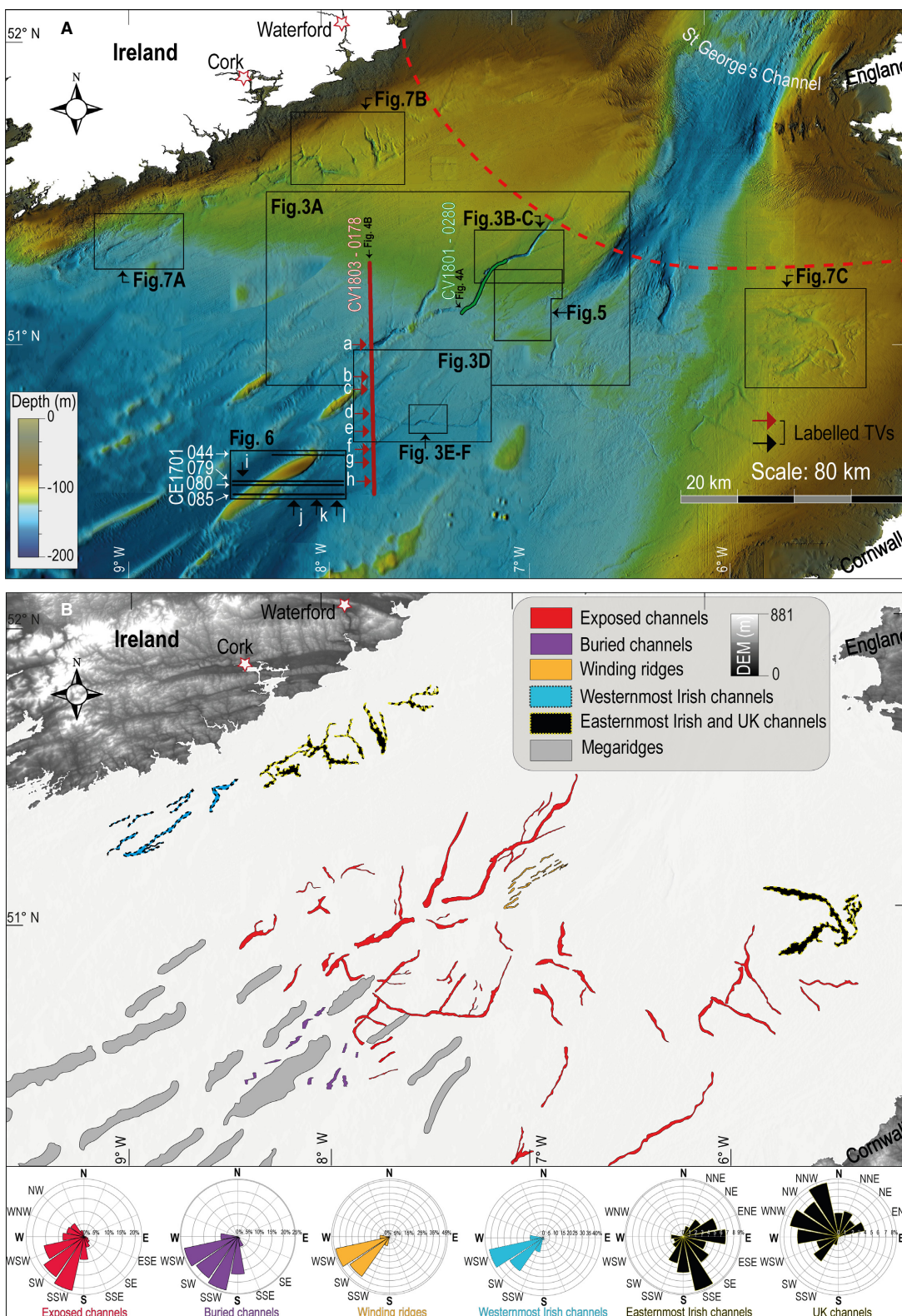


Fig. 2. A. Overview of the study area with the INFOMAR multibeam bathymetry of the Celtic Sea shelf. The red dashed line represents the boundary between the inner and mid-shelf. Locations of the figures are shown by the corresponding panels together with the green, red and black lines referring to the seismic profiles. B. Overview of the geomorphological mapping carried out on the mid-shelf. Rose diagrams showing the main orientations with related cardinal points.

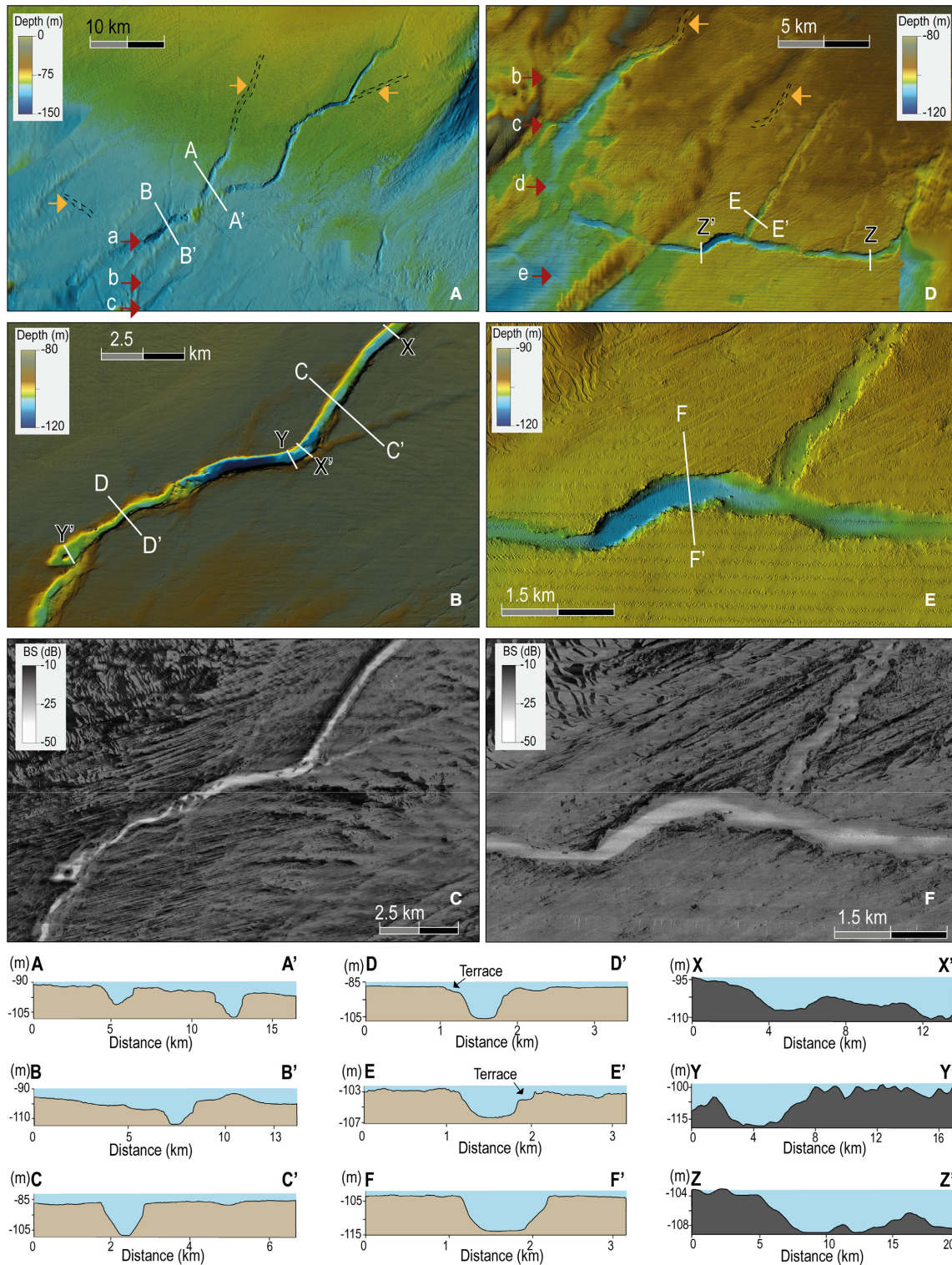


Fig. 3. Multibeam bathymetry of the exposed tunnel valleys. They have abrupt starts and terminations, show straight to low sinuosity, and are U-shaped or V-shaped towards their termini (A). Overdeepened thalweg and overhanging tributary valleys are common. At times, the channels are infilled by more recent sediments (orange arrows and dotted lines contouring the infilled valley). In (A) and (D), the red arrows (a, b, c, d, e) are labelled in correspondence to the tunnel valleys visible at the sea floor and in the seismic profile CV1803–0178 (location in Figs 1C, 2; interpretation in Fig. 4B). The white segments perpendicular to the channel axis indicate beginning and end of the along-channel profile. All the profiles are displayed at the bottom of the figure. A low intensity backscatter (BS) signature (C, F) is common to all the observed channels, mainly accentuated at their thalwegs. General location of the channels in Fig. 2.

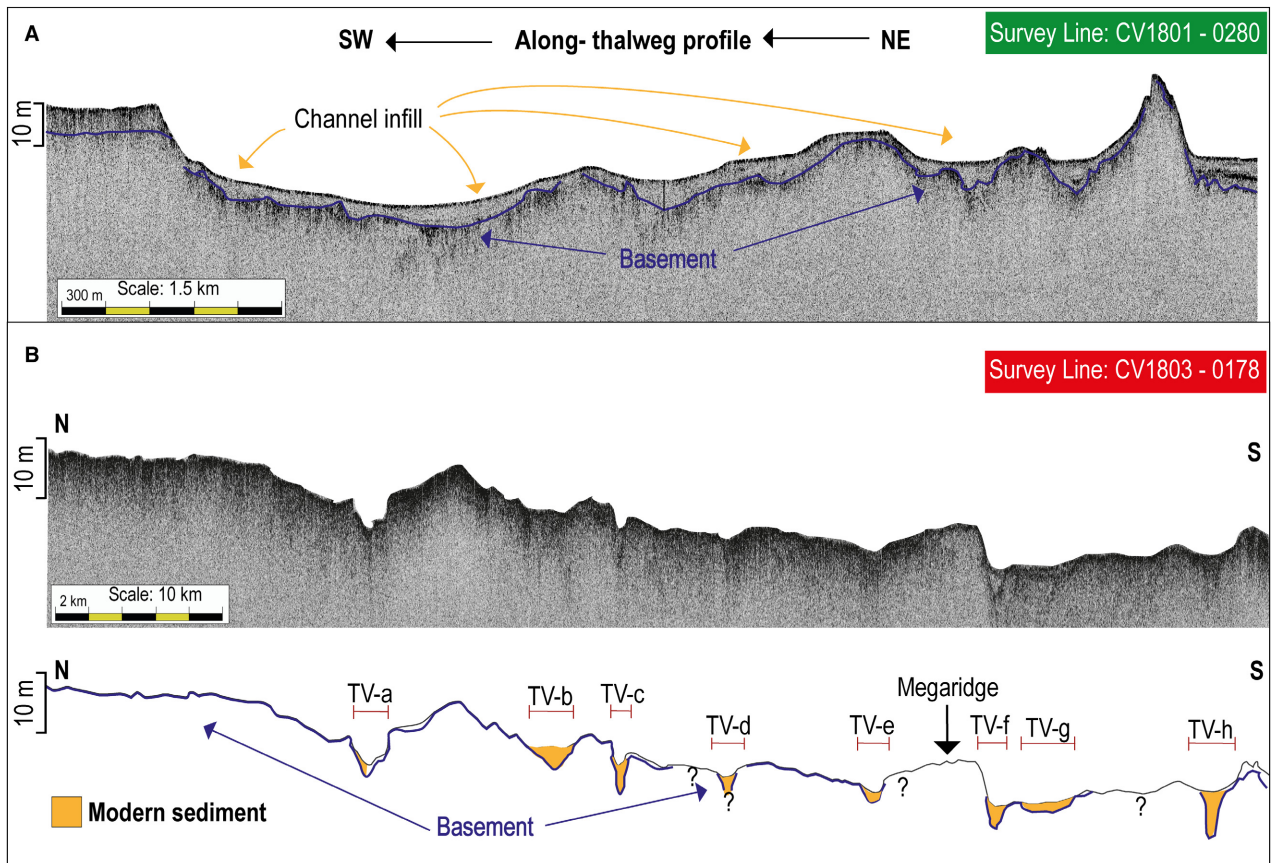


Fig. 4. Sub-bottom profiles of the exposed tunnel valleys. A. Along-thalweg section with the infill likely corresponding to modern sediments (orange arrows) in lower contact with the top of the acoustic basement/bedrock indicated by the thick blue line. B. Seismic profile running almost perpendicular to the tunnel valleys (labelled from a to h to help the identification on the map), mainly V-shaped and partially or totally infilled by modern sediment. When the blue line (basement/bedrock) is not drawn the mapping is uncertain (question marks). Profile locations in Figs 1A, C, 2A.

profile E–E’); occasionally, the channels display a gentle slope (0.5° – 3°) especially when infilled by sediment (Figs 3A, D, 4B). In places, the channels are incised into a flat sea floor (Fig. 3E) and some show irregular along-channel thalwegs, either partially or totally infilled (Figs 3A, D, 4). The localized bathymetric lows are better viewed in the seismic data where the basement has been carved to form an irregular surface along the reach of the channel (Fig. 4). The thalweg has been often infilled by sediments, probably related to more recent sediment transport across the region (Figs 3A, D, 4).

The backscatter data display low intensity values (≤ -25 dB) within the channels and moderate to high intensity (≥ -25 dB) in the surrounding areas (Fig. 3C, F). Localized zones of relatively high backscatter returns are also visible along the channel sides and terraces. The intensity of the backscatter data, coupled with the visual interpretation of the bathymetric data, suggest that high backscatter returns are most likely areas of harder substrate, including bedrock (McCullagh *et al.* 2020; Toole *et al.* 2020). Low intensity backscatter was ground-truthed as fine-grained muddy sediments (Doyle *et al.*

2019; Toole *et al.* 2020), which seem to partly fill the thalwegs of most of the channels, as is also visible in the seismic data (Fig. 4).

In the sub-bottom data, the base of the channels corresponds to a high amplitude reflector. This reflector forms the upper boundary of the bedrock/acoustic basement that at times also crops out at the sea floor (Fig. 4B). The sedimentary unit within the channels is discontinuous, as it infills depressions, is of low amplitude and generally around 3 m thick, but up to 6–7 m thick in places (Fig. 4A). Its character is consistent with that of the superficial drape or uppermost sediment deposit identified across the inner and outer Celtic Sea shelf. This deposit represents postglacial sediment deposition during rising sea level (Pantin & Evans 1984; Furze *et al.* 2014; unit SF1 of Lockhart *et al.* 2018). The presence of a sedimentary infill unit in the channel means that the automatically extracted depth of the exposed channels (as derived from the bathymetric data) is an underestimation of their true depth. Based on the seismic data, the total depth may be up to 3 m deeper (e.g. Fig. 4).

In the central part of the Celtic Sea, to the east of the largest channel, several, discontinuous, narrow (on average ~400 m wide), winding and comparatively small-scale ridges (~1–4 m elevation) were identified (Figs 5, S3). They are found as small individual segments (~1 km long) that, together with the longer ones (up to 10.5 km in length), are arranged in network. Adjacent ridges centrelines are mostly parallel, WSW-oriented and spaced between 0.8 and 2.5 km (Figs 2B, 5). These ridges are also subparallel to the exposed and buried channels.

The channels discussed above (Figs 2, 3, S1A, S2A) share many morphological characteristics with tunnel valleys, including their dimensions and morphology (Ó Cofaigh 1996; Livingstone & Clark 2016; Lewington *et al.* 2020; Ottesen *et al.* 2020). In particular, the branching-geometry pattern, hanging tributaries, overdeepened troughs and rather irregular along-axis profiles (Fig. 4A) appear to be characteristics of major incisions formed by pressurized subglacial meltwater flow, carving localized lows and generating irregular along-channel thalwegs under former continental ice

sheets (e.g. Lonergan *et al.* 2006; Benn & Evans 2010; Stewart *et al.* 2013). We therefore infer that the channels mapped at the sea floor are tunnel valleys carved, mostly into bedrock, by hydrostatically pressurized subglacial meltwater beneath the former BIIS (Benn & Evans 2010; Morlighem *et al.* 2014; Storrar *et al.* 2014).

The exposed tunnel valleys are also associated with comparatively small-scale ridges, here interpreted as eskers based on their long and sinuous morphology and dimensions within their network (Figs 5, S3). The general geometry of eskers varies between single-straight to sinuous-undulating morphologies that can be arranged as individual segments or in network (up to several km; Perkins *et al.* 2016; Mäkinen *et al.* 2017; Storrar *et al.* 2020). Although it is common to find fragmented eskers buried within tunnel valley infills (e.g. Boulton *et al.* 2001; Storrar *et al.* 2020), this has not been observed in our data. The general orientation of the eskers is subparallel to the tunnel valleys, which suggests a common genesis and/or that they were formed as part of the same flow regime. Ice-sheet reconstruction across

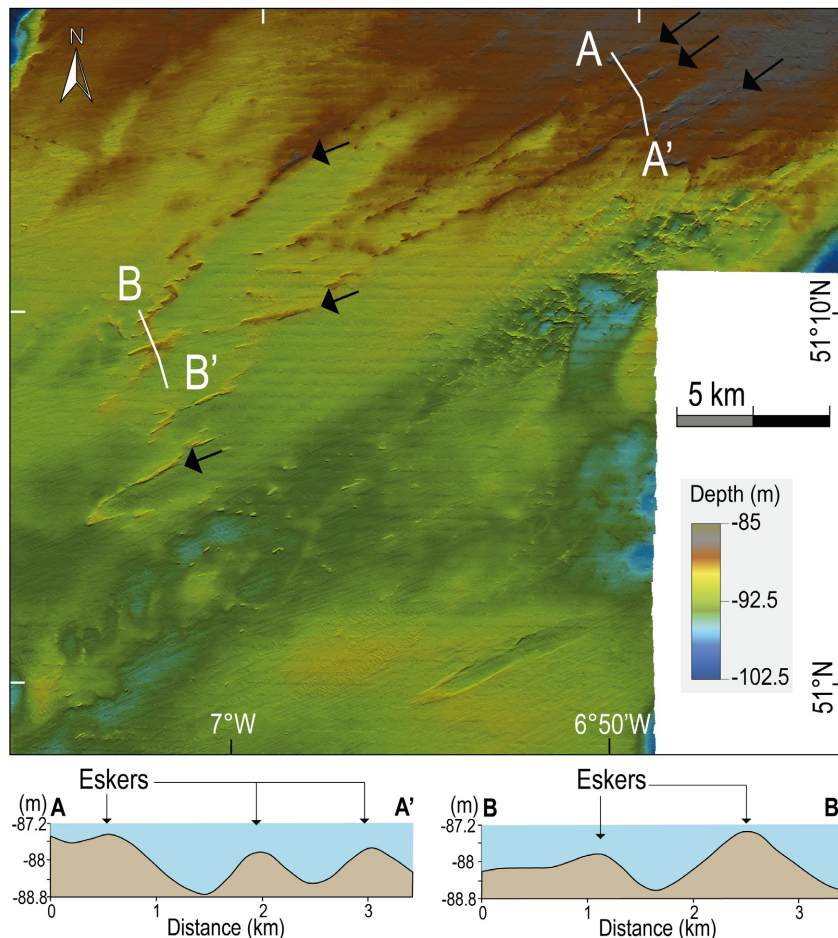


Fig. 5. Small-scale, winding and discontinuous ridges arranged in network mainly WSW-oriented and found east of the northern tunnel valleys (general location in Fig. 2). Black arrows indicate some of the ridges and are oriented following the ridges' long-axes, as also shown by the rose diagram in Fig. 2B.

the shelf (e.g. Small *et al.* 2018) indicates a NE–SW aligned ISIS trough axis direction. Hence, the orientation of both tunnel valleys and eskers appears consistent with these ISIS models and parallel to the palaeo-ice flow. This may indicate a time-transgressive formation of the eskers during stages of ice-sheet retreat over a rigid bed (e.g. crystalline bedrock; Arnold 2019). A more rapid and instantaneous meltwater release would have resulted instead in a larger range of directions (Hewitt 2011), which is not the case here.

Buried channels on the mid-shelf

With increasing distance across the mid-shelf, sea floor channels are no longer visible on the shelf and instead are replaced by a series of buried channels, as imaged on the sub-bottom data (RV ‘Celtic Explorer’ cruise CE1701; Figs 1A, 2B, 6).

These buried channels are predominantly WSW- and SSW-oriented, and their widths and depths range between 165 and ~2000 m and up to 20 m, respectively (Figs 2B, S1B). Their lengths are between 3–28 km based on the interpolated system lengths (L_i ; Table S1).

The buried channels are cut into and infilled by a low to medium amplitude acoustic unit with subhorizontal reflections (light blue in Fig. 6), which in turn is draped by an uppermost, low amplitude acoustic unit (orange unit in Fig. 6). Given the regional seismic units recognized in the area (Lockhart *et al.* 2018), the channels are positioned within and towards the top of the Upper Little Sole Formation (dated at 27–24 ka; *ibid.*). The superficial drape (orange unit in Fig. 6) can be correlated to the postglacial marine sediment found both on the inner and outer shelf and formed during rising postglacial sea level (Pantin & Evans 1984; Furze *et al.* 2014; unit SF1 of Lockhart *et al.* 2018). This unit also infills the inner and mid-shelf tunnel valleys cut into the acoustic basement/bedrock (Fig. 4), as mentioned in the previous section, and therefore we assume that it is the same uppermost sediment drape extending from the inner to mid- and outer shelf.

The buried channels show almost identical orientations, dimensions and geomorphological characteristics to their sea floor counterparts (Figs 2B, S1B, Table S1). In fact, the closely spaced seismic lines of CE1701 clearly show undulating thalwegs and abrupt starts and

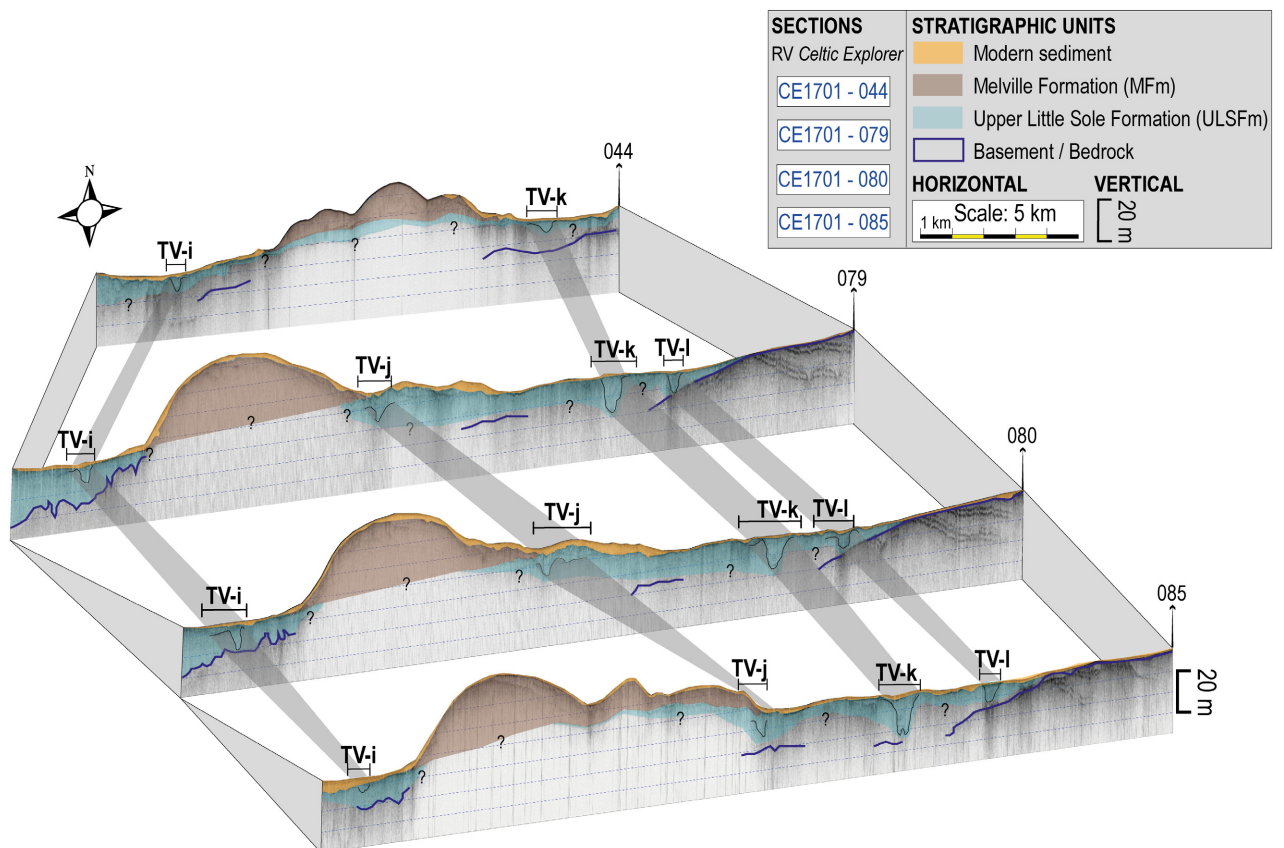


Fig. 6. Fence diagram of the buried tunnel valleys including seismic profiles from the CE1701 data set (Fig. 2A). The continuity as well as the abrupt start and terminations of the tunnel valleys is highlighted by the grey areas. The labelled tunnel valleys (i, j, k and l) correspond to those indicated by the arrows in CE1701 – 080 shown on the bathymetry in Figs 1C, 2A. The stratigraphical interpretation is based on Lockhart *et al.* (2018) and the uncertainty in the spatial continuity of the seismic facies is indicated by question marks. The horizontal scale is the same for the entire data set.

terminations (Fig. 6). Geographically they also appear to be the continuation of the sea floor channels based on their position and orientation (Figs 2B, 6). We therefore interpret these buried channels as tunnel valleys and as the continuation of the meltwater drainage system revealed at the sea floor. We hypothesize that, combined, both the buried and exposed channels were formed during the continuous headward erosion of the ice sheet during its final retreat (cf. Livingstone & Clark 2016).

Within our data set, the examination of the data further offshore, towards the outer shelf, has shown that similar geomorphological features as described above are no longer visible in the seismic data.

Channels close to Irish and UK coastlines

Closer to the Irish and UK coastlines (Fig. 2), on both the inner and mid-shelf, several channels were also mapped (Fig. 7). On the Irish side, the channels to the west (Fig. 7A) differ from those to the east (Fig. 7B) based on

their morphology and orientation. The westernmost channels (Fig. 7A) have a consistent direction parallel to the coastline, trending WSW (shelf-break directed; Fig. 2B) with minor/rare branching and very low sinuosity. The channels have gentle slopes, U-shaped profiles, are on average 600 m wide, have absolute depth averaged 2.5 m along their length (2.5–29 km; Fig. S1C, Table S1) and show an irregular topography along the thalweg (profile X–X'; Fig. 7A). They start and terminate abruptly, and cut perpendicularly through a sequence of arcuate ridges (white dotted areas in Fig. 7A), which have been interpreted as possible moraines or grounding-zone wedges based on their geomorphological similarity with landforms previously mapped around the western Atlantic Irish continental shelf (Benetti *et al.* 2010; Peters *et al.* 2015; Callard *et al.* 2018).

The Irish easternmost and the UK channels are on average 7.3 km long, they run perpendicular to the coastline, with a prominent SSE and NNW downstream profile, respectively, along the thalwegs and directed

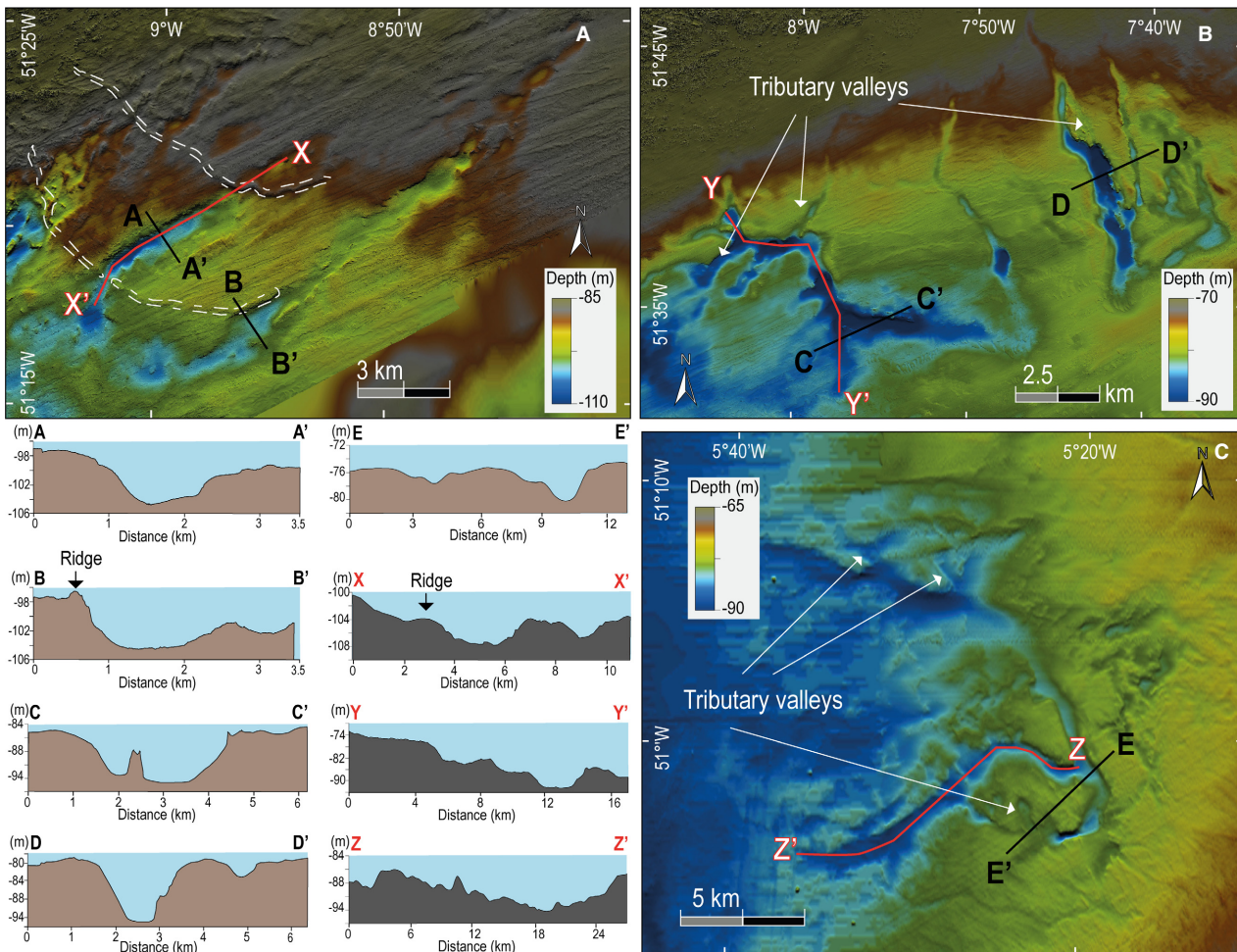


Fig. 7. Channels offshore the (A) western and (B) eastern Irish and (C) the UK coastlines. The white dotted lines are contouring glacial features that are perpendicularly cut by the westerly channels (A). Along-channel and cross-profiles are shown. The white arrows point to tributary valleys (B, C). Locations in Fig. 2.

towards the central Celtic Sea (Figs 7B, C, S2B). The channels have several tributary valleys that, together with the main-stream valley, form a dendritic pattern. The absolute depth of these channels can reach up to ~12 m but is on average 3.4 m (Fig. S1D). They are, on average ~1 km wide and gently V-shaped along the reach of the channels (Fig. 7B, C). The dendritic drainage pattern together with size, orientation and sloping towards the Celtic Sea shelf, are all characteristics that show the similarity between the eastern Irish and UK inshore channels.

Given these morphological characteristics, two possible explanations arise for the formation of the two sets of channels described above. They could be: (i) meltwater conduits, either subglacial or proglacial, or (ii) palaeo-fluvial valleys. The abrupt starts and termini, localized lows and the absence of a constant downstream profile of the westernmost Irish shelf channels (Fig. 7A) are all inconsistent with the pattern of channels formed by subaerial water flow (Grau Galofre *et al.* 2017). These westernmost channels might therefore represent subglacial or proglacial meltwater conduits. In this case, we refer to meltwater channels as mesoscale features forming in a variety of environments (i.e. subglacial, proglacial, lateral; Glasser & Bennett 2004) compared to larger scale tunnel valleys that are generally restricted to areas near the margins of continental ice sheets, with some exceptions like the central North Sea tunnel valleys where there is not enough evidence to say whether they are formed close to ice-sheet margins (Ó Cofaigh 1996; Piotrowski 1999; Lonergan *et al.* 2006; Kehew *et al.* 2012; van der Vegt *et al.* 2012; Stewart *et al.* 2013; Livingstone & Clark 2016). The westernmost channels do not show a constant gradient but display irregular long-profiles (Fig. 7A). This is typical of meltwater conduits mainly driven by the ice-surface slope and topography beneath the ice. Thus, the resulting drainage pattern can contrast with the present-day topography (Bennett & Glasser 2009), as is the case here. Additionally, the orientation of the westernmost channels is subparallel to the tunnel valleys and eskers (Fig. 2B). As the latter represent the main glacial drainage pattern, these marginal meltwater features also follow the direction of the ice flow.

Although some of the meltwater channels can reach up to 28 km in length, the depths appear shallower and the widths narrower compared to those of the tunnel valleys (Fig. S1A, B, C, Table S1). Additionally, the westernmost channels appear to cross-cut the arcuate ridges at the sea floor (white dotted areas in Fig. 7A), suggestive of an event post-dating an ice stillstand. The channels could therefore represent former proglacial meltwater conduits, explaining the partial erosion of the palaeoglacial features preserved at the sea floor (Fig. 7A).

The easternmost set of channels offshore Ireland, on the other hand, and those offshore the UK might have a fluvial origin, based on their morphology and orienta-

tion with respect to the coastlines: SSE for the former and NNW for the latter (Figs 2B, 7B, C). The channels might have formed in the postglacial environment prior to the Holocene marine transgression. Relative sea-level (RSL) model predictions from glacial isostatic adjustment (GIA) simulations for 20 ka within the study area (Brooks *et al.* 2008; Bradley *et al.* 2011; Scourse *et al.* 2018) suggest values between -80 and -90 m for both the SW of Ireland and SW of England. This is lower than the channel depths both to the east of inshore Ireland (~70 m; Fig. 7B) and northwest of north Cornwall (Fig. 7C), indicating emergence of the shelf and potential for fluvial incision of the exposed surface.

These channels seem to be aligned, but not necessarily clearly connected, with onshore river systems of Cork and Waterford in Ireland across the inner shelf and aligned with rivers flowing from northwestern Cornwall (including, and north of, the river Camel; Fig. 1C) in the UK. Other N-S oriented channels were previously mapped offshore Co. Waterford (SE Ireland; Fig. 1C), where they were interpreted as palaeo-river channels potentially connected to the River Barrow-Suir drainage system during sea level lowstand (Tóth *et al.* 2020). Therefore, it is possible that the valleys mapped in this paper were also used as preferential pathways by fluvial processes after the final disappearance of ice from the area. Interestingly, the potential fluvial systems cannot be traced upslope or northward to their submerged channels (across Devonian and Carboniferous rocks) from the data available. As also visible from Fig. 7B, C, there is no actual connection between current onshore river systems and those mapped offshore. In fact, during previous surveys (e.g. NERC project NE/H024301/1, 'Late Glacial Sea Level Minima'), no extensions of channels near the coastline were found. This, therefore, results in a strip of land, between the present-day coastline and the beginning of the offshore palaeovalleys, where no channels appear to have been preserved. This may be partially due to postglacial modification following the supposed age-formation of the channels. However, the available data do not allow us to fully test the different hypotheses for the formation of the easternmost Irish and UK channels and our interpretation remains only tentative.

Discussion

A system of tunnel valleys has been mapped at the seabed and sub-surface across the Celtic Sea (Fig. 8) in the first comprehensive investigation of these features at a regional scale. The tunnel valleys form an extensive and complex meltwater drainage system in this sector of the former BIIS, potentially linked to tunnel valleys recognized in the Irish Sea (e.g. Coughlan *et al.* 2020). The sets of channels closest to the Irish and British coastlines have been given two different interpretations. Those to the west of southern Ireland, parallel to the coastline, are

either subglacial or proglacial meltwater channels (Fig. 7A); whereas the other sets of channels, perpendicular to the southeastern Irish and UK coastlines, might be palaeo-fluvial valleys (Fig. 7B, C). Collectively, they represent different stages in the evolution of the drainage system linked to the history of the Irish Sea Ice Stream (ISIS) and were presumably formed during or after its deglaciation. The following discussion focusses on the formation of the tunnel valleys and their implications for subglacial processes of the former ISIS.

The tunnel valleys documented in this study provide geomorphological evidence for a large-scale ($\sim 25\,000\text{ km}^2$) subglacial drainage system associated with a grounded ISIS on the Celtic Sea shelf. They imply an increased meltwater influence for this sector of the BIIS compared to the Malin Sea and Scottish shelves, located further north, where evidence of tunnel valleys has not been observed (Bradwell *et al.* 2008; Arosio *et al.* 2018; Callard *et al.* 2018; Tarlati *et al.* 2020). Although there is no direct chronological constraint on the age of the tunnel valleys, the correlation with the regional stratigraphy suggests formation of the channelized system during the last glaciation (Praeg *et al.* 2015; Lockhart *et al.* 2018; Scourse *et al.* 2019, 2021; Chiverrell *et al.* 2020; Van Landeghem & Chiverrell 2020). The tunnel valleys appear to be cut into both the basement (Fig. 4) and the glaciogenic sediments of the Upper Little Sole Formation (ULSFm; Fig. 6). This indicates that the

erosion occurred towards the end of or after the deposition of the ULSFm (27–24.3 ka; Praeg *et al.* 2015; Scourse *et al.* 2019) during a period of ice retreat, as the tunnel valleys are all located towards the top of the formation. While the channels cut into the bedrock are widely distributed across the shelf and visible at the sea floor, those that cut into glaciogenic sediment are mostly found across the mid-shelf as buried channels (Figs 6, 8).

The tunnel valleys extend up to $\sim 76\text{ km}$ in length, although the majority are $< 20\text{ km}$ long and the average is 13.8 km (Figs S1A, B, S2A, Table S1). Although some of them were found to reach a width of $\sim 2.5\text{ km}$, the majority are between 200–1200 m with an average of 811 m (Fig. S1A, B). In comparison, reported dimensions of tunnel valley length from the North Sea range from a few km (short tunnel valleys $\sim 13.5\text{ km}$ long) to around 80–100 km with a few exceeding $> 100\text{ km}$ (e.g. Stewart *et al.* 2013; Ottesen *et al.* 2020) and those from the southern Laurentide Ice Sheet extend for up to 65 km with a median length of 6.4 km (e.g. Livingstone & Clark 2016). While the lengths of the tunnel valleys in the Celtic Sea are comparable to those elsewhere, their widths appear relatively narrower compared to tunnel valley widths reported from Europe (e.g. North Sea; 300 m up to 10 km; Stewart *et al.* 2013; Huuse & Kristensen 2016; Ottesen *et al.* 2020) and North America (500–3000 m; e.g. Kehew *et al.* 2012; Livingstone & Clark 2016). In Britain and Ireland, large subglacial drainage features

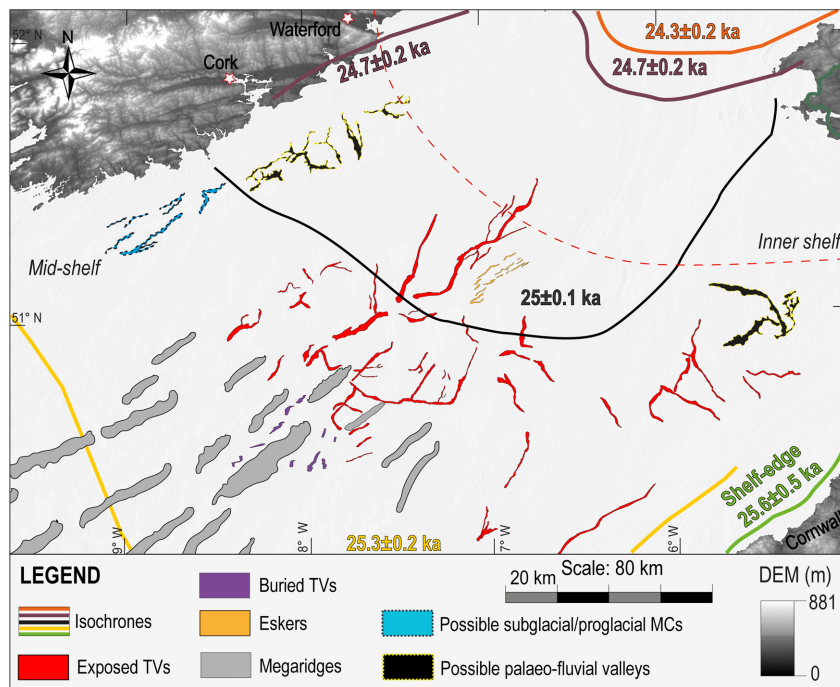


Fig. 8. Geomorphological map showing the coastlines and related key locations for the interpreted channelized features, both exposed and buried. Offshore the Irish and UK coastlines the channels are drawn with dotted lines due to their uncertain interpretation. The isochrones (thick coloured lines) indicate the ice retreating from the shelf-edge (green line at $25.6 \pm 0.5\text{ ka}$) to a northward direction (modified from Scourse *et al.* 2021). The red dashed line represents the boundary between the inner and mid-shelf. TVs = tunnel valleys; MCs = meltwater channels.

(tunnel valleys up to 3 km in width and 200 m in depth) cut into lithified bedrock have been reported to be narrower than those formed in areas with unconsolidated sediments (e.g. Knight 2002; Evans *et al.* 2005). The fact that most of the Celtic Sea tunnel valleys are cut into lithified bedrock (i.e. Palaeogene and Upper Cretaceous chalk; Fig. 9) can, thus, possibly explain their narrower width compared to the North Sea tunnel valleys, which are eroded into the Pleistocene sediment substrate. Several other factors may contribute to variations in tunnel valley widths (e.g. Sjogren *et al.* 2002; Livingstone & Clark 2016): thermal or basal conditions over space coupled with the amount of meltwater discharged over time; the rate of ice retreat if the widest segments developed during slow or stable ice withdrawal; migrating of stream resulting in branching and terracing of the valley floor. Largely, the Celtic Sea tunnel valleys display relatively narrow and shallow (max. 29.3 m) U- and V-shaped cross-sectional profiles, with some bifurcation and branching geometry (Fig. 3). The geographical distribution of the mapped tunnel valleys compared with the reconstructed isochrones (Fig. 8) lead us to exclude that width is related to time of valley formation (e.g. stillstands). Rather it suggests that the tunnel valleys formed and filled relatively quickly, thus preserving comparatively steep tunnel valley walls (Figs 4, 6). This kind of geometry has been reported from similar palaeo-glaciated contexts, for

which time-transgressive channel formation has been suggested (e.g. Huuse & Lykke-Andersen 2000; Praeg 2003; Stewart *et al.* 2013).

As geology seems to have an impact on the shape and dimensions of tunnel valleys (e.g. Knight 2002; Evans *et al.* 2005; Sandersen & Jørgensen 2012), their distribution is displayed in Fig. 9 over the underlying geological units and fault systems. This investigation enabled us to qualitatively examine if the geological factors may have influenced the ice-bed conditions and the occurrence, in terms of location and orientation, of tunnel valleys in the Celtic Sea. The buried tunnel valleys were eroded into the glacial sediments of the ULSFm; thus, these valleys' underlain geology (predominantly Upper Cretaceous and partly Oligo-Miocene mudstone and siltstone; Fig. 9) has poor relevance in their formation.

The exposed tunnel valleys are incised into bedrock, mostly Palaeogene rocks (siliciclastic, argillaceous and sandstone deposits), at times Upper Cretaceous chalk, and more rarely in Oligo-Miocene deposits (mudstone and siltstone, more widespread towards the outer shelf; Figs 1B, 9) (BGS 2013). In terms of erodibility of the geological units, the chalk is likely to be more compacted and cemented (i.e. lower efficiency of glacial erosion) than the Palaeogene and Miocene deposits (Moreau *et al.* 2012). As almost 70% of all tunnel valleys erode into Palaeogene rocks, there seems to be a possible link between the location of the tunnel valleys in the inner/

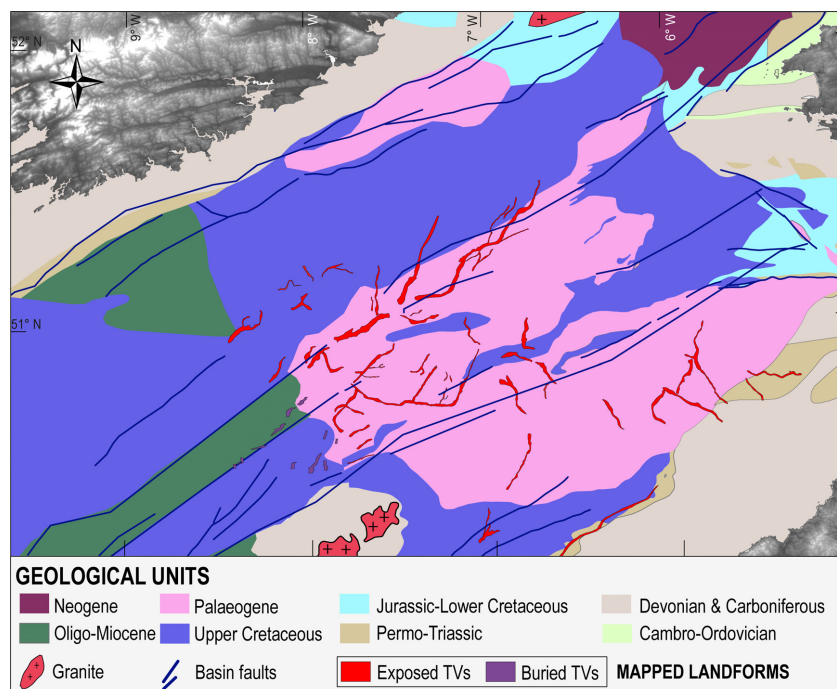


Fig. 9. Geological map including the sea floor and buried landforms mapped on the shelf. The geological units are colour-coded (as shown in the legend) and modified from the EMODnet Geology portal (<https://www.emodnet-geology.eu/services/>). TVs = tunnel valleys. General location in Fig. 1C.

mid-shelf and the underlying geology. However, as all tunnel valleys exposed on the Celtic Sea shelf are largely of similar morphology and dimensions across the area, it appears that the underlying basement geology does not clearly affect their morphology. In other settings, as observed in the North Sea Basin, tunnel valleys incised in chalk are narrower and more V-shaped than those formed in unconsolidated sediment or less resistant strata (Praeg 2003; Moreau *et al.* 2012). In general, also, the valleys cross from chalk (Upper Cretaceous) to Palaeogene rocks with no change in orientation and only one isolated tunnel valley, located in the SE corner, appears aligned with a Permo-Triassic unit (Fig. 9). NE–SW trending faults are present within the Celtic Sea basin (Figs 1B, 9). These faults date back to a period of active rifting during the Triassic–Jurassic and Cretaceous, which was followed by a Tertiary inversion (e.g. Roberts 1989; Shannon 1995; Rodríguez-Salgado *et al.* 2019 and references therein). Recent data from the western Celtic Sea (Rodríguez-Salgado *et al.* 2019) have shown that the major NE–SW trending faults may not extend through the Upper Cretaceous, except where inverted. The tunnel valleys are located close to NE–SW oriented faults in the central Celtic Sea and/or near geological boundaries (Figs 1B, 9; GSI 2012; BGS 2013). The close association with such geological structures might indicate erosive exploitation of pre-existing weaknesses into the substrate (Lloyd 2015). Our investigation, however, did not show major faults involving the valleys in correspondence of the Upper Cretaceous chalk and Palaeogene rocks; thus, a structural control on the position of the valleys cannot be asserted with certainty.

Overall, it appears that the tunnel valley locations coincide with the main ISIS axial trough and the distribution of Palaeogene rocks (Figs 1C, 9). This might indicate that the position of the ice stream coupled with the underlying lithology may have governed the locus of meltwater accumulation and erosion at the ice-bed on the Celtic Sea shelf. It is possible that the basal topography of the basin might have also influenced the large-scale spatial structure and dynamics of the ice margin (Ignéczki *et al.* 2018). In turn, this could have facilitated the erosion, meltwater accumulation and eventually influenced the location of the tunnel valleys on the shelf.

The ISIS advance across the Celtic Sea shelf during the last glaciation was short-lived and characterized by a surge-type event over soft marine sediments (Scourse *et al.* 1990; Scourse & Furze 2001). The advance likely started after 28.3 ka and by 25.6 ka the ice was grounded close to the shelf edge (Praeg *et al.* 2015; Smedley *et al.* 2017a; Lockhart *et al.* 2018; Scourse *et al.* 2019). The ISIS advance from the narrow St George's Channel occurred at a rate of $\sim 350 \text{ m a}^{-1}$ (Smedley *et al.* 2017a), with a sudden release of ice flowing through the channel (Scourse *et al.* 2021). During this phase of rapid ice advancing onto clay-rich marine sediments (e.g. Scourse *et al.* 2019), the hydraulic regime at the ice-bed was

possibly not efficient enough to drain all the basal meltwater through the substrate as groundwater flow. An increase in basal water pressure would have led to a separation of the ice from the bed (Piotrowski 1999). This would have enhanced the basal sliding and surging, resulting in ice stream instability, increase in erosive potential and the rapid advance of the ISIS at this stage (Van Landeghem & Chiverrell 2020; Scourse *et al.* 2021). It is therefore unlikely that the tunnel valley network observed in the Celtic Sea developed under ice surging onto the continental shelf, as its presence would act to reduce ice-bed separation and consequently to stabilize the ice margin (e.g. Kamb 1987).

The ISIS grounding phase at the shelf-edge of the Celtic Sea was relatively short-lived (Scourse *et al.* 2019). After the initial ice pullback by 25.2 ka, the ice margin receded rapidly towards a mid-shelf position by 25 ka (Fig. 8; Scourse *et al.* 2021). During the overall retreat, the tunnel valleys likely cut into the ULSFm as time-transgressive features, similar to the carving of the Wicklow Trough at a later stage of retreat in the Irish Sea (Coughlan *et al.* 2020). It is also possible that the sediment transported by meltwater contributed as a major source for the MFm sediments that form the mega-ridges. The presence of eskers to the east of the large tunnel valley in the central Celtic Sea (Figs 5, 8) strengthens the interpretation of a time-transgressive formation of the tunnel valleys. Despite the fact that the eskers are restricted to a relatively small area ($\sim 275 \text{ km}^2$; Figs 5, 8), their overall distribution, together with the presence of the tunnel valleys, reflects the subglacial drainage organization beneath the ice sheet. In fact, the eskers' long-axes tend to be perpendicular to the ice margin (Boulton *et al.* 2009; Greenwood *et al.* 2016; Lewington *et al.* 2020). The absence of eskers in other parts of the Celtic Sea may be related to preservation issues but also to changes in the direction of the ice retreat from a NE–SW flow to a more northward flow (Van Landeghem & Chiverrell 2020).

The presence of tunnel valleys incised into the bedrock on the inner and part of the mid-shelf and infilled by modern sediment (Fig. 4) suggests that their downcutting also occurred during the rapid retreat of the grounded ice. It is probable that discharges of hydrostatically pressurized meltwater were significantly erosive. Erosional processes at the ISIS bed could also account for the limited sediment deposition over bedrock in the inner part of the shelf (Figs 3, 4), compared to the mid-shelf (Fig. 6). The contrast in sediment thicknesses is perhaps similar to previous advance phases, during which erosion and advection of subglacial sediment to the ice margin occurred (cf. Boulton *et al.* 1996).

The tunnel valleys have not been observed in the innermost part of the shelf, but they reappear in the Irish Sea marking a deceleration of the grounded ice margin, from a rapid to slow pace of retreat (Coughlan *et al.* 2020; Van Landeghem & Chiverrell 2020). Different factors

could have contributed to this: variations in meltwater availability, changes in bedrock geology and increased rate of retreat as the ISIS was leaving the Celtic Sea (Scourse *et al.* 2021). It has also been inferred that the reverse slope of the Celtic Deep might have favoured such rapid retreat (between 230 and 650 m a⁻¹; *ibid.*) limiting the time for headward erosion or producing a segmented tunnel valley (Livingstone & Clark 2016). Recent analyses from the southern sector of the former Laurentide Ice Sheet demonstrated that the formation and morphology of tunnel valleys can be tightly coupled to variations in basal thermal regime, bed topography, time of erosion and climate (Livingstone & Clark 2016). It is not possible to identify a main driver, but it is probable that a combination of the above factors resulted in the distribution of tunnel valleys observed in the Celtic Sea compared to those identified further north, in the Irish Sea.

The presence in the Celtic Sea shelf of a channelized subglacial drainage network highlights the key role of meltwater erosion during ice evacuation from the continental shelf. Our study also shows that the large subglacial system might have formed within a restricted time frame of ~1–2 ka (Scourse *et al.* 2021) by the meltwater delivered to the bed as the ice sheet deglaciated (Fig. 8).

Conclusions

- Using high-resolution bathymetric and seismic data, an extensive system of exposed and buried tunnel valleys has been mapped in the central part of the Celtic Sea shelf (Fig. 8).
- The network of tunnel valleys consists of around 80 steep-sided incisions, up to 76 km long, largely located on the inner and mid-shelf. Recent geochronological and stratigraphical reconstructions in the same area suggest that the subglacial meltwater drainage system may be linked to the last Irish Sea Ice Stream (ISIS) retreat phase across the shelf, between 25.6 and 24.3 ka (Fig. 8).
- Bedrock lithology and structure in the form of pre-existing faults have been qualitatively investigated to link a possible control on the channels' formation with meltwater exploiting pre-existing weaknesses to erode the tunnel valleys. Observations show that there is no obvious control of the basement lithology and structural geology on tunnel valley distribution and orientation (Fig. 9). Rather, their location largely coincides with the main ISIS axial path, indicating that the position of the ice stream may have controlled the location of the greatest meltwater erosion rather than the inherited structural setting.
- The overall retreat occurred within ~1–2 ka, with the formation of overdeepened and steep-sided tunnel valleys and highlights the erosive power of subglacial meltwater at this stage of fast ice withdrawal from the

shelf. The presence of highly erosive meltwater discharge on the relatively shallow Celtic Sea shelf further emphasizes the contribution of meltwater to this area of the BIIS, in contrast with its sectors located further north (e.g. Malin Sea shelf).

- Tunnel valleys are absent from the inner part of the shelf, but they reappear further north in the Irish Sea Basin (Wicklow Trough), likely as part of a segmented system of tunnel valleys through the Irish Sea Basin and onto the Celtic Sea shelf.

Acknowledgements. – This work and C. Giglio were funded by the Department of Education and Learning at Ulster University (Ph.D. studentship 110118). High-resolution multibeam echo-sounder bathymetric and seismic data presented in this paper were acquired by the Integrated Mapping for the Sustainable Development of Ireland's Marine Resource (INFOMAR) programme and are freely available (www.infomar.ie). INFOMAR is the Department of Communications, Climate Action and Environment (DCCA) funded national seabed mapping programme, jointly managed, and delivered by Geological Survey Ireland and Marine Institute. The regional backdrop bathymetry was derived from the EMODnet Bathymetry portal (www.emodnet-bathymetry.eu). JC106 data were acquired during campaigns for the BRITICE-CHRONO project (NERC consortium grant NE/J009768/1). The research survey CV14007 was carried out under the Sea Change Strategy with the support of the Marine Institute and the Marine Research Sub-programme of the National Development Plan 2007–2013. We thank the masters, crew and scientists of the RRS 'James Cook', RV 'Celtic Voyager' and RV 'Celtic Explorer' who contributed to the collection of all the data sets shown in this paper. Dr Lidia Lonergan, one anonymous reviewer and the editorial input of Professor Jan A. Piotrowski are acknowledged for their detailed and constructive comments, which helped to significantly improve the manuscript. The authors declare that there is no conflict of interests.

Author contributions. – CG: conceptualization, methodology, formal analysis, investigation, data curation, visualization, writing – original draft, review and editing. SB: conceptualization, investigation, writing – original draft, review and editing, supervision, funding acquisition. FS: formal analysis, resources, data curation, writing – review and editing, visualization. EL: resources. JHC: software, resources, visualization. RP: writing – review and editing, supervision. KVL: writing – review and editing. C C: writing – review and editing. JS: writing – review and editing. PD: supervision.

Data availability statement

The bathymetric and seismic data presented in this paper are available upon request from the corresponding author at Ulster University, INFOMAR Programme (www.infomar.ie), the Marine Institute of Ireland (<https://www.marine.ie>) and the EMODnet Bathymetry and Geology central portals (www.emodnet-bathymetry.eu; <https://www.emodnet.eu/en/geology>).

References

- Arnold, N. 2019: A new model for esker formation sheds light on the processes within subglacial tunnels. *Journal of Geophysical Research: Earth Surface* 124, 700–704.
- Arosio, R., Dove, D.,   Cofaigh, C. & Howe, J. A. 2018: Submarine deglacial sediment and geomorphological record of southwestern Scotland after the Last Glacial Maximum. *Marine Geology* 403, 62–79.
- Benetti, S., Dunlop, P. &   Cofaigh, C. 2010: Glacial and glacially-related features on the continental margin of northwest Ireland mapped from marine geophysical data. *Journal of Maps* 6, 14–29.

- Benn, D. I. & Evans, D. J. A. 2010: *Glaciers and Glaciation*. 802 pp, Hodder Education, London.
- Bennett, M. & Glasser, N. F. 2009: *Glacial Geology: Ice Sheets and Landforms*. 385 pp, Wiley Blackwell, Oxford.
- BGS 2013: *British Geological Survey from Offshore bedrock geology (1:250k scale map)*. <https://www.bgs.ac.uk/>.
- Boulton, G. S., Dongelmans, P., Punkari, M. & Broadgate, M. 2001: Palaeoglaciology of an ice sheet through a glacial cycle: the European ice sheet through the Weichselian. *Quaternary Science Reviews* 20, 591–625.
- Boulton, G. S., Hagdorn, M., Maillot, P. B. & Zatzepin, S. 2009: Drainage beneath ice sheets: groundwater-channel coupling, and the origin of esker systems from former ice sheets. *Quaternary Science Reviews* 28, 621–638.
- Boulton, G. S., van der Meer, J. J. M., Hart, J., Beets, D., Ruegg, G. H. J., van der Wateren, F. M. & Jarvis, J. 1996: Till and moraine emplacement in a deforming bed surge-an example from a marine environment. *Quaternary Science Reviews* 15, 961–987.
- Bradley, S. L., Milne, G. A., Shennan, I. & Edwards, R. 2011: An improved glacial isostatic adjustment model for the British Isles. *Journal of Quaternary Science* 26, 541–552.
- Bradwell, T., Stoker, M. S., Gollidge, N. R., Wilson, C. K., Merritt, J. W., Long, D., Everest, J. D., Hestvik, O. B., Stevenson, A. G., Hubbard, A. L., Finlayson, A. G. & Mathers, H. E. 2008: The northern sector of the last British Ice Sheet: Maximum extent and demise. *Earth-Science Reviews* 88, 207–226.
- Brooks, A. J., Bradley, S. L., Edwards, R. J., Milne, G. A., Horton, B. & Shennan, I. 2008: Postglacial relative sea-level observations from Ireland and their role in glacial rebound modelling. *Journal of Quaternary Science* 23, 175–192.
- Callard, S. L., Ó Cofaigh, C., Van Landeghem, K. J. J., Saher, M. H., Gales, J. A., Small, D., Clark, C. D., Livingstone, S. J., Fabel, D. & Moreton, S. G. 2018: Extent and retreat history of the Barra Fan Ice Stream offshore western Scotland and northern Ireland during the last glaciation. *Quaternary Science Reviews* 201, 280–302.
- Callaway, A., Quinn, R., Brown, C. J., Service, M., Long, D. & Benetti, S. 2011: The formation and evolution of an isolated submarine valley in the North Channel, Irish Sea: an investigation of Beaufort's Dyke. *Journal of Quaternary Science* 26, 362–373.
- Chiverrell, R. C., Smedley, R. K., Small, D., Ballantyne, C. K., Burke, M. J., Callard, S. L., Clark, C. D., Duller, A. T., Evans, D. J. A., Fabel, D., Van Landeghem, K., Livingstone, S., Ó Cofaigh, C., Thomas, G. S. P., Roberts, D. H., Saher, M., Scourse, J. & Wilson, P. 2018: Ice margin oscillations during deglaciation of the northern Irish Sea Basin. *Journal of Quaternary Science* 33, 739–762.
- Chiverrell, R. C., Stephen, G., Thomas, P., Burke, M., Medialdea, A., Smedley, R., Bateman, M., Clark, C., Duller, G. A. T., Fabel, D., Jenkins, G., Ou, X., Roberts, H. M. & Scourse, J. 2020: The evolution of the terrestrial - terminating Irish Sea glacier during the last glaciation. *Journal of Quaternary Science* 1–28, <https://doi.org/10.1002/jqs.3229>.
- Chiverrell, R. C., Thrasher, I. M., Thomas, G. S. P., Lang, A., Scourse, J. D., Van Landeghem, K. J. J., McCarroll, D., Clark, C. D., Ó Cofaigh, C., Evans, D. J. & Ballantyne, C. K. 2013: Bayesian modelling the retreat of the Irish Sea Ice Stream. *Journal of Quaternary Science* 28, 200–209.
- Coughlan, M., Tóth, Z., Van Landeghem, K., Mccarron, S. & Wheeler, A. J. 2020: Formational history of the Wicklow Trough: a marine - transgressed tunnel valley revealing ice flow velocity and retreat rates for the largest ice stream draining the late-Devensian British–Irish Ice Sheet. *Journal of Quaternary Science* 35, 1–13.
- Dowdeswell, J. A., Canals, M., Jakobsson, M., Todd, B. J., Dowdeswell, E. K. & Hogan, K. A. 2016: The variety and distribution of submarine glacial landforms and implications for ice-sheet reconstruction. *Geological Society, London, Memoirs* 46, 519–552.
- Doyle, S. H., Hubbard, A., Fitzpatrick, A. A. W., van As, D., Mikkelsen, A. B., Petterson, R. & Hubbard, B. 2014: Persistent flow acceleration within the interior of the Greenland ice sheet. *Geophysical Research Letters* 41, 899–905.
- Doyle, J., Ó'Brien, S., Fitzgerald, R., Vacherot, J. P., Sugrue, S. & Quinn, M. 2019: *The "Smalls" Nephrops Grounds (FU22) 2019 UWTV Survey Report and catch scenarios for 2020*. Marine Institute UWTV Survey report, 21 pp.
- EMODnet Bathymetry Consortium 2018: *EMODnet Digital Bathymetry (DTM 2018)*. <https://doi.org/10.12770/18ff0d48-b203-4a65-94a9-5fd8b0ec35f6>.
- Evans, D. J. A., Clark, C. D. & Mitchell, W. A. 2005: The last British Ice Sheet: a review of the evidence utilised in the compilation of the Glacial Map of Britain. *Earth Science Reviews* 70, 253–312.
- Furze, M. F. A., Scourse, J. D., Pienkowsky, A. J., Marret, F., Hobbs, W. O., Carter, R. A. & Long, B. T. 2014: Deglacial to postglacial palaeoenvironments of the Celtic Sea: lacustrine conditions versus a continuous marine sequence. *Boreas* 43, 149–174.
- Glasser, N. F. & Bennett, M. R. 2004: Glacial erosional landforms: origins and significance for palaeoglaciology. *Progress in Physical Geography* 28, 43–75.
- Grau Galofre, A., Mark Jellinek, A., Osinski, G. R., Zanetti, M. & Kukko, A. 2017: Subglacial drainage patterns of Devon Island, Canada: detailed comparison of rivers and subglacial meltwater channels. *Cryosphere* 12, 1461–1478.
- Greenwood, S. L., Clason, C. C., Helanow, C. & Margold, M. 2016: Theoretical, contemporary observational and palaeo-perspectives on ice sheet hydrology: processes and products. *Earth-Science Reviews* 155, 1–27.
- GSI 2012: *Geological Survey Ireland interactive web data delivery system*. <https://jetstream.gsi.ie/iwdds/map.jsp>.
- Hamblin, R. J. O., Jeffery, D. & Wingfield, R. T. R. 1990: Glacial incisions indicating Middle and Upper Pleistocene ice limits off Britain — two comments and a reply. *Terra Nova* 2, 382–388.
- Hewitt, I. J. 2011: Modelling distributed and channelized subglacial drainage: the spacing of channels. *Journal of Glaciology* 57, 302–314.
- Hughes, A. L. C., Gyllencreutz, R., Lohne, Ø. Y. S., Mangerud, J. A. N. & Svendsen, J. I. 2016: The last Eurasian ice sheets – a chronological database and time-slice reconstruction, DATED-1. *Boreas* 45, 1–45.
- Huuse, M. & Kristensen, T. B. 2016: Pleistocene tunnel valleys in the North Sea Basin. *Geological Society, London, Memoirs* 46, 207–208.
- Huuse, M. & Lykke-Andersen, H. 2000: Overdeepened Quaternary valleys in the eastern Danish North Sea: morphology and origin. *Quaternary Science Reviews* 19, 1233–1253.
- Ignécci, A., Sole, A. J., Livingstone, S. J., Ng, F. S. L. & Yang, K. 2018: Greenland Ice Sheet surface topography and drainage structure controlled by the transfer of basal variability. *Frontiers in Earth Science* 6, 101. <https://doi.org/10.3389/feart.2018.00101>.
- IHO 2020: *International Hydrographic Organization Standards for Hydrographic Surveys S-44*. https://iho.int/uploads/user/pubs/Drafts/S-44_Edition_6.0.0-Final.pdf.
- Kamb, B. 1987: Glacier surge mechanism based on linked cavity configuration of the basal water conduit system. *Journal of Geophysical Research* 92, 9083–9100.
- Kehew, A. E., Piotrowski, J. A. & Jørgensen, F. 2012: Tunnel valleys: concepts and controversies - A review. *Earth-Science Reviews* 113, 33–58.
- Knight, J. 2002: Bedform patterns, subglacial meltwater events, and Late Devensian ice sheet dynamics in north-central Ireland. *Global and Planetary Change* 35, 237–253.
- Knutz, P. C., Austin, W. E. N. & Jones, E. J. W. 2001: Millennial-scale depositional cycles related to British ice sheet variability and North Atlantic paleocirculation since 45 kyr B.P., Barra Fan, U.K. margin. *Paleoceanography* 16, 53–64.
- Lewington, E. L. M., Livingstone, S. J., Clark, C. D., Sole, A. J. & Storrar, R. D. 2020: A model for interaction between conduits and surrounding hydraulically connected distributed drainage based on geomorphological evidence from Keewatin, Canada. *The Cryosphere* 14, 2949–2976.
- Livingstone, S. J. & Clark, C. D. 2016: Morphological properties of tunnel valleys of the southern sector of the Laurentide Ice Sheet and implications for their formation. *Earth Surface Dynamics* 4, 567–589.
- Lloyd, C. T. 2015: *Controls upon the location and size of glacial overdeepenings*. Ph.D. thesis, University of Sheffield, 238 pp.
- Lockhart, E. A. 2019: *Glacial sculpting and post-glacial drowning of the Celtic Sea*. Ph.D. thesis, Bangor University, 208 pp.
- Lockhart, E. A., Scourse, J. D., Praeg, D., Van Landeghem, K. J. J., Mellett, C., Saher, M., Callard, L., Chiverrell, C., Benetti, S., Ó Cofaigh, C. & Clark, C. D. 2018: A stratigraphic investigation of

- the Celtic Sea megaridges based on seismic and core data from the Irish-UK sectors. *Quaternary Science Reviews* 198, 156–170.
- Lonegan, L., Maidment, S. C. R. & Collier, J. S. 2006: Pleistocene subglacial tunnel valleys in the central North Sea basin: 3-D morphology and evolution. *Journal of Quaternary Science* 21, 891–903.
- Mäkinen, J., Kajuuuti, K., Palmu, J. P., Ojala, A. & Ahokangas, E. 2017: Triangular-shaped landforms reveal subglacial drainage routes in SW Finland. *Quaternary Science Reviews* 164, 37–53.
- McCullagh, D., Benetti, S., Plets, R., Sacchetti, F., ÓKeefe, E. & Lyons, K. 2020: Geomorphology and substrate of Galway Bay, Western Ireland. *Journal of Maps* 16, 166–178.
- Montelli, A., Dowdeswell, J. A., Pirogova, A., Terekhina, Y., Tokarev, M., Rybin, N., Martyn, A. & Khoshtariya, V. 2020: Deep and extensive meltwater system beneath the former Eurasian Ice Sheet in the Kara Sea. *Geology* 48, 179–183.
- Moreau, J., Huuse, M., Janszen, A., van der Vegt, V., Gibbard, P. L. & Moscarillo, A. 2012: The glaciogenic unconformity of the southern North Sea. *Geological Society, London, Special Publication* 368, 99–110.
- Morlighem, M., Rignot, E., Mouginot, J., Seroussi, H. & Larour, E. 2014: Deeply incised submarine glacial valleys beneath the Greenland ice sheet. *Nature Geoscience* 7, 418–422.
- Ó Cofaigh, C. 1996: Tunnel valley genesis. *Progress in Physical Geography* 20, 1–19.
- Ó Toole, R., Jude, M., Sacchetti, F., Furey, T., Mac Craith, E., Sheehan, K., Kelly, S., Cullen, S., McGrath, F. & Monteys, X. 2020: Mapping Ireland's coastal, shelf and deep water environments using illustrative case studies to highlight the impact of seabed mapping on the generation of blue knowledge. *Geological Society, London, Special Publications* 505, <https://doi.org/10.1144/SP505-2019-207>.
- Ottesen, D., Stewart, M., Brønner, M. & Batchelor, C. L. 2020: Tunnel valleys of the central and northern North Sea (56°N to 62°N): distribution and characteristics. *Marine Geology* 425. Article code: 106199. <https://doi.org/10.1016/j.margeo.2020.106199>.
- Pantin, H. & Evans, C. D. R. 1984: The Quaternary history of the central and southwestern Celtic Sea. *Marine Geology* 57, 259–293.
- Perkins, A. J., Brennand, T. A. & Burke, M. J. 2016: Towards a morphogenetic classification of eskers: implications for modelling ice sheet hydrology. *Quaternary Science Reviews* 134, 19–38.
- Peters, J. L., Benetti, S., Dunlop, P. & Ó Cofaigh, C. 2015: Maximum extent and dynamic behaviour of the last British–Irish Ice Sheet west of Ireland. *Quaternary Science Reviews* 128, 48–68.
- Piotrowski, J. A. 1999: Channelized subglacial drainage under soft-bedded ice sheets: evidence from small N-channels in Central European Lowland. *Kwartalnik Geologiczny* 43, 153–162.
- Praeg, D. 2003: Seismic imaging of mid-Pleistocene tunnel-valleys in the North Sea Basin-high resolution from low frequencies. *Journal of Applied Geophysics* 53, 273–298.
- Praeg, D., McCarron, S., Dove, D., Ó Cofaigh, C., Scott, G., Monteys, X., Facchin, L., Romeo, R. & Coxon, P. 2015: Ice sheet extension to the Celtic Sea shelf edge at the Last Glacial Maximum. *Quaternary Science Reviews* 111, 107–112.
- Price, S. F., Payne, A. J., Catania, G. A. & Neumann, T. A. 2008: Seasonal acceleration of inland ice via longitudinal coupling to marginal ice. *Journal of Glaciology* 54, 213–219.
- Roberts, D. G. 1989: Basin inversion in and around the British Isles. *Geological Society, London, Special Publications* 44, 131–150.
- Rodríguez-Salgado, P., Childs, C., Shannon, P. M. & Walsh, J. J. 2019: Structural evolution and the partitioning of deformation during basin growth and inversion: a case study from the Mizen Basin Celtic Sea, offshore Ireland. *Basin Research* 32, 830–853.
- Sandersen, P. B. E. & Jørgensen, F. 2012: Substratum control on tunnel-valley formation in Denmark. *Geological Society, London, Special Publications* 368, 145–157.
- Scourse, J. D. & Furze, M. F. A. 2001: A critical review of the glaciomarine model for Irish sea deglaciation: evidence from southern Britain, the Celtic shelf and adjacent continental slope. *Journal of Quaternary Science* 16, 419–434.
- Scourse, J. D., Austin, W. E. N., Bateman, R., Catt, J. A., Evans, C. D. R., Robinson, J. E. & Young, J. R. 1990: Sedimentology and micropalaeontology of glaciomarine sediments from the Central and Southwestern Celtic Sea. *Geological Society, London, Special Publications* 53, 329–347.
- Scourse, J. D., Chiverrell, R. R., Small, D., Burke, M., Saher, M., Van Landeghem, K. J. J., Duller, G. A. T., Ó Cofaigh, C., Bateman, M. D., Benetti, S., Bradley, S., Callard, L., Evans, D. J. A., Fabel, D., Jenkins, G. T. H., McCarron, S., Medialdea, A., Moreton, S., Ou, X., Praeg, D., Roberts, D. H., Roberts, H. M. & Clark, C. D. 2021: Maximum extent and readvance dynamics of the Irish Sea Ice Stream and Irish Sea Glacier since the Last Glacial. *Journal of Quaternary Science* 1–25, <https://doi.org/10.1002/jqs.3313>.
- Scourse, J. D., Haapaniemi, A. I., Colmenero-hidalgo, E., Peck, V. L., Hall, I. R., Austin, W. E. N., Knutz, P. C. & Zahn, R. 2009: Growth, dynamics and deglaciation of the last British–Irish ice sheet: the deep-sea ice-rafted detritus record. *Quaternary Science Reviews* 28, 3066–3084.
- Scourse, J., Saher, M., Van Landeghem, K. J. J., Lockhart, E., Purcell, C., Callard, L., Roseby, Z., Allinson, B., Pieńkowski, A. J., Ó Cofaigh, C., Praeg, D., Ward, S., Chiverrell, R., Moreton, S., Fabel, D. & Clark, C. D. 2019: Advance and retreat of the marine-terminating Irish Sea Ice Stream into the Celtic Sea during the Last Glacial: timing and maximum extent. *Marine Geology* 412, 53–68.
- Scourse, J. D., Ward, S. L., Wainwright, A., Bradley, S. L., Uehara, K., Campus, P. & Bridge, M. 2018: The role of megatides and relative sea level in controlling the deglaciation of the British – Irish and Fennoscandian ice sheets. *Journal of Quaternary Science* 33, 139–149.
- Shannon, P. M. 1995: Permo-Triassic development of the Celtic Sea region, offshore Ireland. *Geological Society, London, Special Publication* 91, 215–237.
- Sjogren, D. B., Fisher, T. G., Taylor, L. D., Jol, H. M. & Munro-Stasiuk, M. J. 2002: Incipient tunnel channels. *Quaternary International* 90, 41–56.
- Small, D., Smedley, R. K., Chiverrell, R. C., Scourse, J. D., Cofaigh, C. Ó., Duller, G. A. T., McCarron, S., Burke, M. J., Evans, D. J. A., Fabel, D., Gheorghiu, D. M., Thomas, G. S. P., Xu, S. & Clark, C. D. 2018: Trough geometry was a greater influence than climate-ocean forcing in regulating retreat of the marine-based Irish-Sea Ice Stream. *GSA Bulletin* 130, 1981–1999.
- Smedley, R. K., Chiverrell, R. C., Ballantyne, C. K., Burke, M. J., Clark, C. D., Duller, G. A. T., Fabel, D., McCarroll, D., Scourse, J. D., Small, D. & Thomas, G. S. P. 2017a: Internal dynamics condition centennial-scale oscillations in marine-based ice-stream retreat. *Geology* 45, 787–790.
- Smedley, R. K., Scourse, J. D., Small, D., Hiemstra, J. F., Duller, G. A. T., Bateman, M. D., Burke, M. J., Chiverrell, R. C., Clark, C. D., Davies, S. M., Fabel, D., Gheorghiu, D. M., McCarroll, D., Medialdea, A. & Xu, S. 2017b: New age constraints for the limit of the British–Irish Ice Sheet on the Isles of Scilly. *Journal of Quaternary Science* 32, 48–62.
- Stackebrandt, W. 2009: Die subglazialen rinnen norddeutschlands - Ein kurzer überblick. *Zeitschrift der Deutschen Gesellschaft für Geowissenschaften* 160, 203–210.
- Stewart, M. A., Lonegan, L. & Hampson, G. 2013: 3D seismic analysis of buried tunnel valleys in the central North Sea: morphology, cross-cutting generations and glacial history. *Quaternary Science Reviews* 72, 1–17.
- Storrar, R. D., Ewertowski, M., Tomczyk, A. M., Barr, I. D., Livingstone, S. J., Ruffell, A., Stoker, B. J. & Evans, D. J. A. 2020: Equifinality and preservation potential of complex eskers. *Boreas* 49, 211–231.
- Storrar, R. D., Stokes, C. R. & Evans, D. J. A. 2014: Increased channelization of subglacial drainage during deglaciation of the Laurentide ice sheet. *Geology* 42, 239–242.
- Tarlatti, S., Benetti, S., Callard, S. L., Ó Cofaigh, C., Dunlop, P., Georgiopolou, A., Edwards, R., Van Landeghem, K., Saher, M., Chiverrell, R., Fabel, D., Moreton, S., Morgan, S. & Clark, C. D. 2020: Final deglaciation of the Malin Sea through meltwater release and calving events. *Scottish Journal of Geology* 56, 117–133.
- Tóth, Z., McCarron, S., Wheeler, A. J., Wenau, S., Davis, S., Lim, A. & Spiess, V. 2020: Geomorphological and seismostratigraphic evidence for multidirectional polyphase glaciation of the northern Celtic Sea. *Journal of Quaternary Science* 35, 465–478.

- Van Landeghem, K. J. J. & Chiverrell, R. C. 2020: Bed erosion during fast ice streaming regulated the retreat dynamics of the Irish Sea Ice Stream. *Quaternary Science Reviews* 245, 106526, <https://doi.org/10.1016/j.quascirev.2020.106526>.
- van der Vegt, P., Janszen, A. & Moscardiello, A. 2012: Tunnel valleys: current knowledge and future perspectives. *Geological Society, London, Special Publications* 368, 75–97.
- Ward, S. L., Neill, S. P., Scourse, J. D., Bradley, S. L. & Uehara, K. 2016: Sensitivity of palaeotidal models of the northwest European shelf seas to glacial isostatic adjustment since the Last Glacial Maximum. *Quaternary Science Reviews* 151, 198–211.
- Wingfield, R. T. R. 1989: Glacial incisions indicating Middle and Upper Pleistocene ice limits off Britain. *Terra Nova* 1, 538–548.
- Zwally, H. J., Abdalati, W., Herring, T., Larson, K., Saba, J. & Steffen, K. 2002: Surface melt – induced acceleration of Greenland ice-sheet flow. *Science* 297, 218–222.

Supporting Information

Additional Supporting Information may be found in the online version of this article at <http://www.boreas.dk>.

Fig. S1. The histograms show the frequency distribution of the mapped features on the shelf with regards to their widths and depths. Basic statistical measures have been included for each measured parameter (n = number of elements; maximum, minimum and mean values of the series). The absolute depths of the sea floor channels (A, C, D) have been calculated based on the

minimum and maximum on the MBES bathymetry; the buried valley depths (B) have been measured from base to valley shoulder within the seismic profiles using an assumed velocity of 1600 m s^{-1} .

Fig. S2. The histograms show the frequency distribution of the exposed channels (central Celtic Sea shelf) and the easternmost Irish and UK channel (perpendicular to the coastlines) lengths, and related basic statistical measures. Due to the small total count ($n \leq 10$), the lengths of the other landforms have been included in Table S1.

Fig. S3. Histograms of frequency quantifying the widths, depths and lengths of the winding ridges interpreted as eskers. The counts (n) and basic statistical measures are shown.

Table S1. Total length values for the landforms described as channels. For the buried channels, Li corresponds to the ‘interpolated system length’ used to calculate the system continuity. Li is coupled with letters that refer to the labelled buried tunnel valleys shown in Fig. 6. For the exposed tunnel valleys and palaeo-fluvial valleys histograms of length are included in Fig. S2. Nevertheless, their length measurements have also been added in the table below for thoroughness.