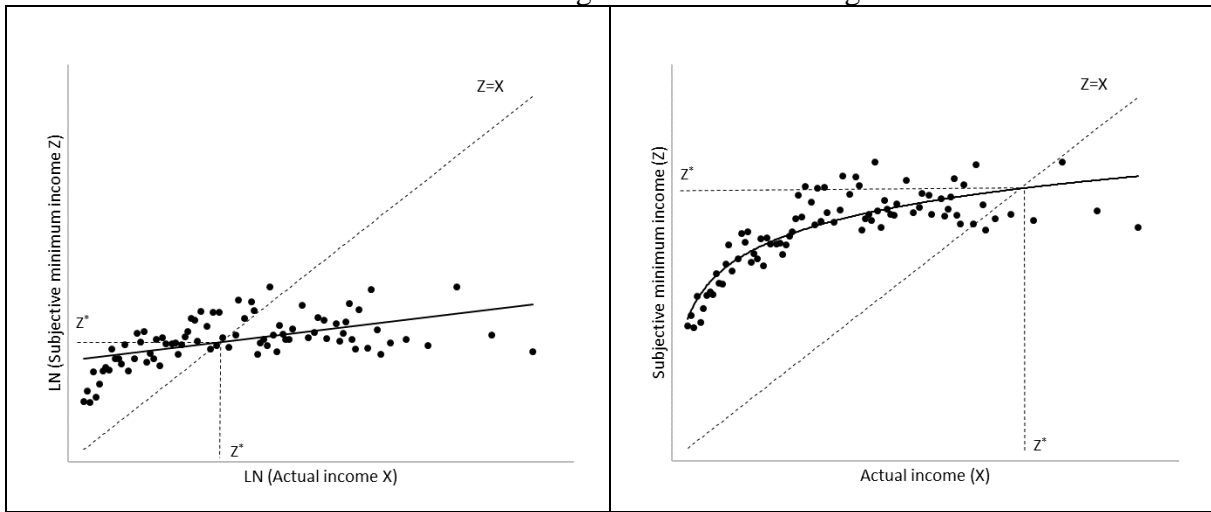


FIGURE 1
Intersection method – double logarithmic and non-logarithmic forms

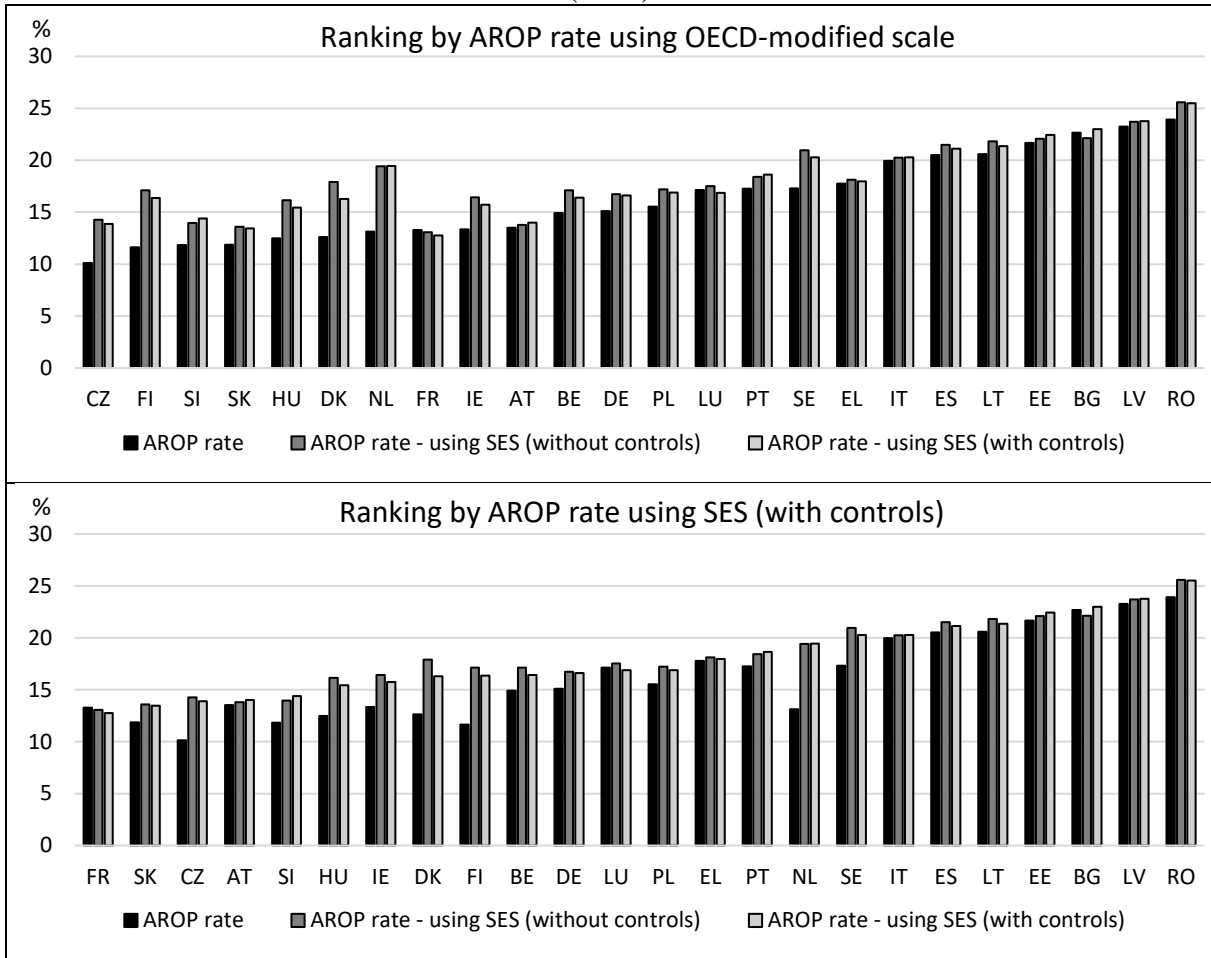


Source: Authors' illustration.

Notes: The functions estimated on real data are displayed in Figures A.1 in the Online Annex.

FIGURE 2

Relative income poverty rates using the OECD-modified and subjective equivalence scales (2019)

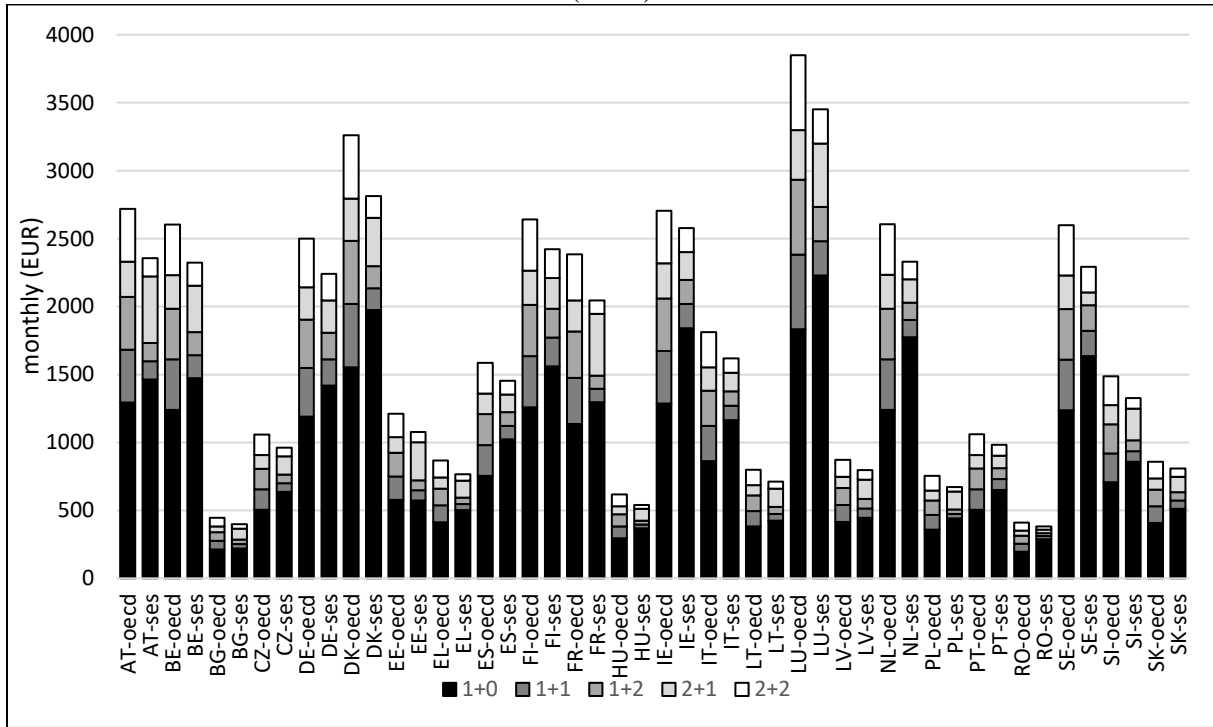


Source: EU-SILC 2019. Authors' computations.

Notes: AROP – at-risk-of poverty; SES – subjective equivalence scale. Share of individuals in the population; full samples. Adults defined as household members 16+ (the AROP rates may slightly differ from official statistics in which adults are defined as household members 14+). EE as a country abbreviation stands for Estonia (not Eastern Europe).

FIGURE 3

Relative income poverty lines using the OECD-modified and subjective equivalence scales (2019)



Source: EU-SILC 2019. Authors' computations.

Notes: Adults defined as household members 16+ (the AROP lines may slightly differ from official statistics). EE as a country abbreviation stands for Estonia (not Eastern Europe).