

## ARTICLE OPEN



# Glutamatergic dysfunction leads to a hyper-dopaminergic phenotype through deficits in short-term habituation: a mechanism for aberrant salience

Marios C. Panayi<sup>1,2,7,8</sup>, Thomas Boerner<sup>1,8</sup>, Thomas Jahans-Price<sup>1,2,8</sup>, Anna Huber<sup>3</sup>, Rolf Sprengel<sup>4</sup>, Gary Gilmour<sup>5</sup>, David J. Sanderson<sup>6</sup>, Paul J. Harrison<sup>3</sup>, Mark E. Walton<sup>1,2,9</sup> and David M. Bannerman<sup>1,9</sup>

© The Author(s) 2022

Psychosis in disorders like schizophrenia is commonly associated with aberrant salience and elevated striatal dopamine. However, the underlying cause(s) of this hyper-dopaminergic state remain elusive. Various lines of evidence point to glutamatergic dysfunction and impairments in synaptic plasticity in the etiology of schizophrenia, including deficits associated with the GluA1 AMPAR subunit. GluA1 knockout (*Gria1*<sup>-/-</sup>) mice provide a model of impaired synaptic plasticity in schizophrenia and exhibit a selective deficit in a form of short-term memory which underlies short-term habituation. As such, these mice are unable to reduce attention to recently presented stimuli. In this study we used fast-scan cyclic voltammetry to measure phasic dopamine responses in the nucleus accumbens of *Gria1*<sup>-/-</sup> mice to determine whether this behavioral phenotype might be a key driver of a hyper-dopaminergic state. There was no effect of GluA1 deletion on electrically-evoked dopamine responses in anaesthetized mice, demonstrating normal endogenous release properties of dopamine neurons in *Gria1*<sup>-/-</sup> mice. Furthermore, dopamine signals were initially similar in *Gria1*<sup>-/-</sup> mice compared to controls in response to both sucrose rewards and neutral light stimuli. They were also equally sensitive to changes in the magnitude of delivered rewards. In contrast, however, these stimulus-evoked dopamine signals failed to habituate with repeated presentations in *Gria1*<sup>-/-</sup> mice, resulting in a task-relevant, hyper-dopaminergic phenotype. Thus, here we show that GluA1 dysfunction, resulting in impaired short-term habituation, is a key driver of enhanced striatal dopamine responses, which may be an important contributor to aberrant salience and psychosis in psychiatric disorders like schizophrenia.

*Molecular Psychiatry* (2023) 28:579–587; <https://doi.org/10.1038/s41380-022-01861-8>

## INTRODUCTION

Psychosis is a key feature of several neuropsychiatric disorders, including schizophrenia. Current thinking posits that psychosis is a disorder of aberrant salience [1–3]. Aberrant salience describes when a stimulus grabs inappropriately high levels of attention and thus drives maladaptive behavior. Aberrant salience is likely mediated via elevated dopamine (DA) levels, which have been strongly implicated in schizophrenia [3, 4]. However, the underlying causes of this DA dysregulation are often unspecified [5]. Although this hyper-dopaminergic state and aberrant salience could stem from primary abnormalities within the DA system, it could also constitute a final common pathway [5], resulting as a secondary consequence of other brain disturbances like glutamatergic dysfunction and impairments in synaptic plasticity, which are also strongly linked to schizophrenia [6–8]. Nevertheless, direct evidence for this hypothesis has remained elusive.

Recent large scale GWAS meta-analyses of schizophrenia have revealed an over-representation of genes associated with

glutamate synapses and synaptic plasticity. For example, a genome-wide significant association to schizophrenia has been established for the *Gria1* locus which codes for the GluA1 subunit of the AMPA glutamate receptor [9, 10]. GluA1 plays a key role in AMPAR trafficking and thus can support the expression of long-term potentiation (LTP), an experimental model of synaptic plasticity. Post-mortem studies have also demonstrated that GluA1 protein and mRNA expression are decreased in patients with schizophrenia (e.g. [11–15]), which are unlikely to be attributed to long term neuroleptic treatment e.g. [16–19]). Together, these studies point to an important role for GluA1 in the etiology of the disorder. *Gria1*<sup>-/-</sup> mice therefore represent an important model of impaired synaptic plasticity in schizophrenia.

*Gria1*<sup>-/-</sup> mice lack a form of short-term memory which results in deficits in short-term habituation [20–24]. As such, *Gria1*<sup>-/-</sup> mice are unable to reduce the attention paid to a recently presented stimulus [25]. For example, whereas wild-type animals will reduce orienting and exploration, and pay less attention to a

<sup>1</sup>Department of Experimental Psychology, University of Oxford, Tinsley Building, Mansfield Road, Oxford OX1 3SR, UK. <sup>2</sup>Wellcome Centre for Integrative Neuroimaging, University of Oxford, John Radcliffe Hospital, Oxford OX3 9DU, UK. <sup>3</sup>Department of Psychiatry, University of Oxford, Oxford OX3 7JX, UK. <sup>4</sup>Max Planck Institute for Medical Research, Institute for Anatomy and Cell Biology, Heidelberg University, Heidelberg, Germany. <sup>5</sup>Lilly Centre for Cognitive Neuroscience, Discovery Biology, Lilly Research Centre, Lilly UK, Windlesham, Surrey, UK. <sup>6</sup>Department of Psychology, Durham University, Durham, UK. <sup>7</sup>Present address: National Institute on Drug Abuse Intramural Research Program, 251 Bayview Blvd., Baltimore, MD 21224, USA. <sup>8</sup>These authors contributed equally: Marios C. Panayi, Thomas Boerner, Thomas Jahans-Price. <sup>9</sup>These authors jointly supervised this work: Mark E. Walton, David M. Bannerman. ✉email: marios.panayi@nih.gov; mark.walton@psy.ox.ac.uk; david.bannerman@psy.ox.ac.uk

Received: 23 July 2021 Revised: 19 October 2022 Accepted: 28 October 2022

Published online: 2 December 2022

specific stimulus they have just experienced, *Gria1*<sup>-/-</sup> mice fail to habituate and continue to pay attention to the stimulus when experienced again soon after [23, 24, 26]. This abnormally persistent attention to stimuli has been proposed as a model of aberrant salience [27]. However, the relationship between GluA1, short-term habituation and striatal DA release is unknown. Here we address this by recording phasic DA signals in the nucleus accumbens of wild-type and *Gria1*<sup>-/-</sup> mice using fast-scan cyclic voltammetry (FSCV). We show that electrically evoked DA in anaesthetized *Gria1*<sup>-/-</sup> mice is comparable to controls. However, phasic DA signals in response to both sucrose rewards and neutral light stimuli fail to habituate in awake behaving *Gria1*<sup>-/-</sup> mice, resulting in a behaviorally relevant, hyper-dopaminergic phenotype.

## METHODS

See Supplementary Information for detailed methods.

### Subjects

Genetic construction, breeding, and genotyping of *Gria1*<sup>-/-</sup> mice was as previously described [28]. Briefly, homozygous knockout (*Gria1*<sup>-/-</sup>) and wild-type (WT) littermates were generated from heterozygous-heterozygous breeding pairs. All procedures were performed in accordance with the United Kingdom Animals (Scientific Procedures) Act of 1986 and were approved by the University of Oxford Ethical Review Board. Subjects for anaesthetized voltammetry recordings were 6 WT mice (Male  $n=3$ ) and 6 *Gria1*<sup>-/-</sup> mice (Male  $n=3$ ). During freely moving in-vivo voltammetry, data were obtained from  $N=25$  working electrodes (WT  $n=16$ , *Gria1*<sup>-/-</sup>  $n=9$ ) targeting the nucleus accumbens (NAcc) in  $N=14$  mice (Male WT  $n=9$ , Male *Gria1*<sup>-/-</sup>  $n=5$ ).

### Fast scan cyclic voltammetry in anaesthetized recordings

Carbon fiber electrodes were constructed as described previously [29–31]. Those used in anaesthetized recordings were pre-calibrated using a flow cell to establish a conversion between current signals (nA) and DA concentrations (nM). Mice were surgically implanted with a bipolar stimulating electrode targeting the ventral tegmental area (VTA) and a carbon-fiber voltammetry electrode targeting the NAcc, and maintained under urethane anesthesia for the recording procedure.

To establish whether GluA1-receptor knockout alters electrically-evoked DA release, we tested the following stimulation parameters: (1) Baseline responses ( $6 \times$  baseline stimulations with 5 min interstimulus interval (ISI)); (2) Stimulation intensity which was varied at 50, 100, 150, 200, 250, 300  $\mu$ A; 2 measurements per stimulation amplitude, in ascending intensity order with a 3 min ISI; and (3) Number of pulses (5, 10, 20, 30, 40; 2 measurements per stimulation amplitude, in ascending intensity order with a 3 min ISI). (4) Finally, a second baseline of 6 responses was taken to assess the stability of the evoked response.

### Fast scan cyclic voltammetry in freely moving animals

Mice were implanted with bilateral carbon fiber voltammetry electrodes targeting the NAcc. Following post-operative recovery, mice were food restricted and maintained >85% of their free feeding weight. Mice were first acclimatized to the operant chambers (Med Associates), to the liquid sucrose reward and to the voltammetric headstage. They were then trained to nose poke in the food magazine. In total, 22  $\mu$ l sucrose reward was delivered upon magazine entry on a variable interval (VI) 60 s and 120 s schedule for 3 days each. Each session lasted 30 min.

During two recording sessions, in addition to the VI120s nose poking schedule for sucrose, the mice were given non-contingent presentations of one of two different neutral visual stimuli lasting 10 s each (comparable to [24]). One stimulus consisted of two flashing (0.909 Hz) LED lights positioned either side of the reward magazine ("LED") and the other was the continuously illuminated house light on top of the conditioning box ("House"). Presentation of lights occurred independently of the reward delivery schedule enabling an independent analysis of reward and stimulus evoked DA. To assess stimulus-specific short-term habituation of DA signals, each session consisted of 8 pairs of stimulus presentations (a pair of stimulus presentations constitutes a trial), with the delay between 1st and 2nd stimulus presentations in each pairing being 30 s and the inter-trial interval being 310 s (based on [24]). The trials in a session

consisted of a pseudorandom permutation of the 4 possible pair types: House->House, LED->LED (both "same" trials), House->LED or LED->House (both "different" trials). If the DA response habituated in a stimulus-specific manner, then it would be smaller to the presentation of the identical cue as the second target stimulus on same trials than to the alternative cue as the second target stimulus on different trials.

In separate sessions, the mice were presented with a variable reward task. Rewards were again delivered contingent on a nose poke into the food magazine on a VI120s schedule, but now the magnitude of the sucrose reward was pseudorandomly varied (11, 22, and 44  $\mu$ l; small, medium, and large rewards respectively).

### Histology

At the end of experimental procedures, mice were deeply anesthetized with pentobarbital (200 mg/kg), and microlesions were made at the working electrode locations via current stimulation. The animal was transcardially perfused with saline followed by 10% formalin solution. Brains were sectioned in 40  $\mu$ m coronal slices using a cryostat and were stained with Cresyl violet allowing histological identification of the electrode location.

## RESULTS

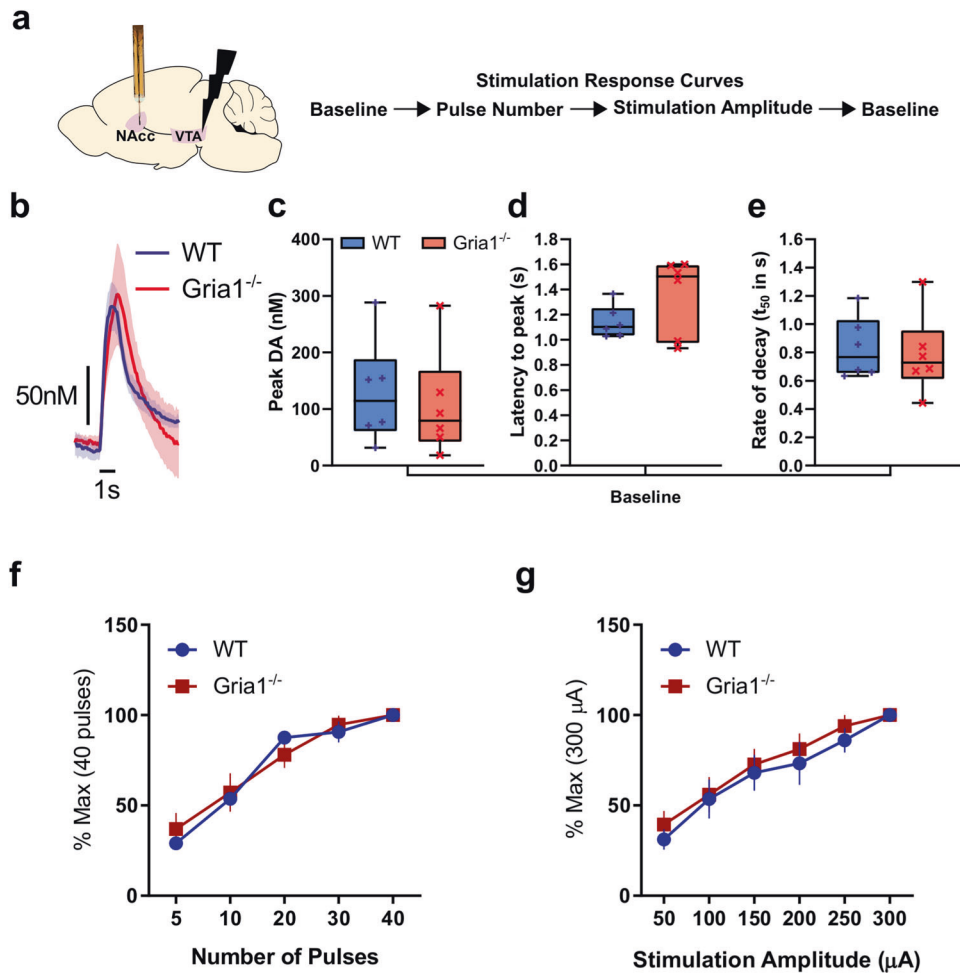
### GluA1 deletion does not alter sensitivity to electrically evoked VTA-NAcc DA release in anaesthetized mice

We first wanted to assess whether there were intrinsic differences in the strength of the mesolimbic pathway, in the releasable pool of DA, and in the kinetics of DA transmission in NAcc in the *Gria1*<sup>-/-</sup> mice. To do this, we examined DA release following electrical stimulation of the VTA in anaesthetized mice (Fig. 1a, b and Supplementary Fig. 1A). Following stimulation, there were no significant genotype differences in the release and reuptake of DA. Specifically, there were no significant genotype differences on peak DA release ( $t_{10}=0.42$ ,  $p=0.68$ ; Fig. 1c), latency to peak ( $t_{10}=1.55$ ,  $p=0.15$ ; Fig. 1d), or rate of decay ( $t_{50}$  from model fit of negative exponential decay for traces with model fit  $R^2 > 90\%$ ;  $t_{10}=0.32$ ,  $p=0.76$ ; Fig. 1e). Given that release and reuptake parameters are closely related, we used a multivariate ANOVA to directly compare these three outcome measures (peak DA, latency to peak, and rate of decay) to ensure there were no significant genotype differences in some simultaneous combination of these parameters. There was no significant effect of Genotype ( $F_{1,10}=0.17$ ,  $p=0.69$ ), or interaction between Genotype and the three outcome measures (Hotelling's Trace (2,9) = 0.44,  $p=0.66$ ). Furthermore, there was no evidence of any genotype differences in the peak electrically evoked DA levels across a number of pulses (Fig. 1f), or a range of stimulation intensities (Fig. 1g; all  $F$ 's < 1.57;  $p > 0.22$ ; Supplementary Fig. 1B, C and Supplementary Results). Surprisingly, there was a significant sex difference such that peak electrically evoked DA was higher in male than female mice. However, this sex difference did not interact with Genotype (Supplementary Fig. 1C, D). Together, this demonstrates that GluA1 deletion does not lead to intrinsic differences in electrically-evoked release or the balance of DA release/reuptake in this mesolimbic DA pathway.

### GluA1 deletion leads to hyper-dopaminergic responses to unsignalled rewards across repeated reward presentations

We next wanted to determine how stimulus-evoked DA in behaving mice was influenced by GluA1 deletion and how this changed with repeated presentation of stimuli. It is well established that reliable NAcc DA responses can be evoked following unpredicted and unsignalled reward delivery [32, 33]. We therefore assessed phasic DA responses to unsignalled rewards (VI120s) in *Gria1*<sup>-/-</sup> and control mice (see Supplementary Fig. 2 for histology).

On average, peak DA responses following reward delivery were markedly higher in *Gria1*<sup>-/-</sup> than in WT mice (main effect of Genotype:  $F_{1, 22.48}=26.45$ ,  $p < 0.001$ ; Fig. 2a). However, closer

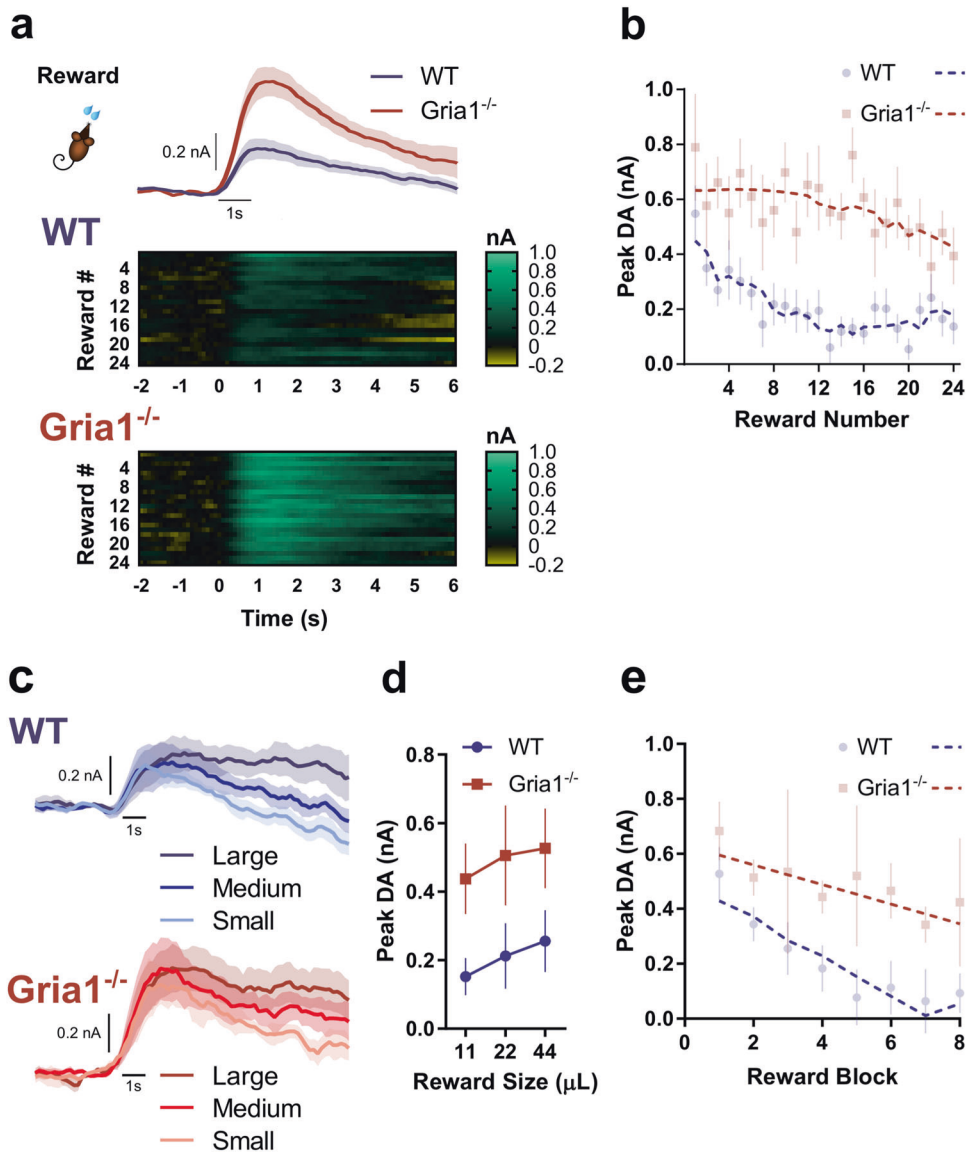


**Fig. 1** **GluA1 deletion does not alter intrinsic VTA-NAcc DA pathway release properties.** **a** Electrical stimulation of the VTA and FSCV measurement of NAcc DA release in anaesthetized WT and *Gria1*<sup>-/-</sup> mice. Outline of stimulation protocol involving a baseline session before and after the stimulus response curve protocol. Baseline stimulation parameters were 30 Hz, 40 pulses, 2 ms pulse width, 300  $\mu$ A. **b** Average traces showing the time course of electrically evoked DA release during baseline stimulations before and after the stimulation response curves (shown in **f** and **g**). Peak DA (**c**), latency to peak (**d**), and rate of decay (**e**) of these baseline stimulations did not differ between genotypes. Rate of decay was quantified using the  $t_{50}$  from model fit of negative exponential decay for traces during the baseline period with model fit  $R^2 > 90\%$ . Box and whisker plots show range (error bars), 25th–75th percentile (box limits), and median values (line), and individual animal data points. **f** Effects of varying number of stimulation pulses on the peak DA release expressed as a percentage of release to the maximum (40) pulses. **g** Effects of varying stimulation amplitude on the peak DA release expressed as a percentage of release to the maximum (300  $\mu$ A) amplitude. Varying the number of pulses and stimulation amplitude significantly changed DA release but this did not depend on genotype. Significant main effect of stimulation amplitude ( $F_{5,45} = 59.87$ ,  $p < 0.001$ ), and number of pulses ( $F_{4,45} = 83.91$ ,  $p < 0.001$ ), but no significant main effects of genotype or genotype  $\times$  stimulation interactions (all  $F_s < 0.59$ ,  $p_s > 0.61$ , and  $F_s < 1.57$ ,  $p_s > 0.22$  respectively). See Supplementary Fig. 1 for histology and additional analyses. All error bars represent  $\pm$  standard error of the mean.

inspection of the data revealed that this was due to differences in the dynamics of reward-evoked DA across the session in the two groups (Fig. 2b). Specifically, while the size of the phasic DA responses decreased progressively across the session in wild-type mice, this decrease was much smaller in *Gria1*<sup>-/-</sup> mice leading to the development of a hyper-dopaminergic phenotype in these animals. This was supported statistically by a significant Genotype  $\times$  Reward Number<sub>quadratic</sub> interaction ( $F_{1, 22.20} = 9.85$ ,  $p = 0.005$ ). Release was significantly higher in *Gria1*<sup>-/-</sup> mice after the 6th ( $F_{1, 22.69} = 11.75$ ,  $p = 0.002$ ), 12th ( $F_{1, 22.50} = 25.74$ ,  $p < 0.001$ ), 18th ( $F_{1, 22.50} = 26.36$ ,  $p < 0.001$ ), and 24th rewards ( $F_{1, 21.82} = 4.97$ ,  $p = 0.04$ ). Crucially, however, there were no significant differences in reward evoked DA between genotypes to the first reward ( $F_{1, 22.87} = 1.59$ ,  $p = 0.22$ ).

Next, we tested the sensitivity of the DA responses to changes in reward magnitude (Fig. 2c) in a separate recording session. DA signals scaled with reward size in all mice and both

genotypes showed an equal sensitivity to reward magnitude (Genotype  $\times$  Reward Size  $F_{2, 18.40} = 0.24$ ,  $p = 0.79$ ; Reward Size  $F_{2, 18.40} = 6.66$ ,  $p = 0.007$ ) (Fig. 2d). However, there were again significant genotype differences in the magnitude of the reward response across repeated trials within this session (Genotype  $\times$  Reward Number  $\times$  Time  $F_{1, 8.99} = 16.21$ ,  $p = 0.003$ ) (Fig. 2e). Follow up comparisons revealed that while peak DA was again indistinguishable between genotypes at the start of the session, it was significantly greater in *Gria1*<sup>-/-</sup> than wild-type mice by the last block of rewards (1st Reward:  $F_{1, 14.62} = 0.61$ ,  $p = 0.45$ , 4th Reward:  $F_{1, 9.13} = 3.03$ ,  $p = 0.12$ , 8th Reward:  $F_{1, 14.64} = 6.07$ ,  $p = 0.027$ ). Taken together, these findings show that *Gria1*<sup>-/-</sup> mice exhibit augmented reward-elicited DA release. Importantly, this is an emergent property caused by a progressive decrease in DA responses observed in WT mice to repeated presentations of the same reward which is significantly attenuated in *Gria1*<sup>-/-</sup> mice.



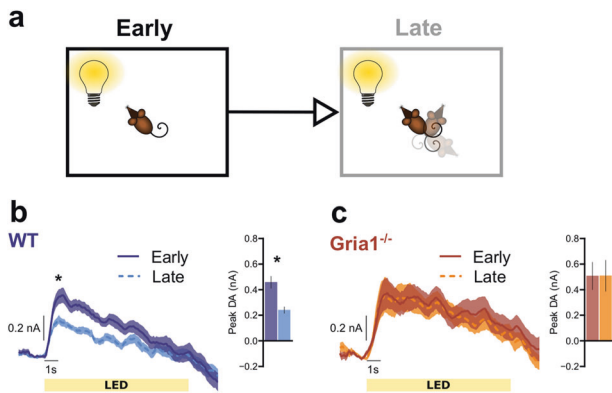
**Fig. 2** **GluA1 deletion leads to hyper-dopaminergic responses to unsignalled rewards as a result of impaired short-term habituation.** **a** Average DA response to unsignalled reward in WT and *Gria1*<sup>-/-</sup> mice. Heat plots depict changing DA dynamics within the session over repeated rewards (each reward is a row, and reward is delivered at time = 0). **b** Peak DA response plotted as a function of reward number in the session. Average responses depicted as semi-transparent symbols, and predicted values (estimated marginal means) from the statistical model represented as dashed lines. Within-session habituation of reward evoked DA declines rapidly in WT but not *Gria1*<sup>-/-</sup> mice. **c** Average DA response to variable reward sizes (small, medium, large) in WT and *Gria1*<sup>-/-</sup> mice. A subset of the mice from the previous behavioral task (WT *n* = 6, KO *n* = 5 electrodes; WT *n* = 5, KO *n* = 4 mice) had patent electrodes for a subsequent test using variable reward sizes (11  $\mu$ L, 22  $\mu$ L, 44  $\mu$ L; small, medium, large rewards respectively). **d** Average peak DA response to each reward magnitude. The peak and persistence of the reward evoked DA response were sensitive to reward size (Reward Size  $F_{2, 9.00} = 6.66, p = 0.01$ ; Reward Size  $\times$  Time  $F_{2, 18.22} = 6.72, p = 0.01$ ). These reward size specific differences in evoked DA did not differ between genotypes (Genotype  $F_{1, 9.00} = 3.56, p = 0.09$ , Genotype  $\times$  Reward Size  $F_{2, 18.40} = 0.24, p = 0.79$ , Genotype  $\times$  Reward Size  $\times$  Time  $F_{2, 18.22} = 0.14, p = 0.87$ ). Peak evoked dopamine was significantly greater for large than for small rewards (Sidak corrected threshold of significance  $p < 0.017$ ; Small vs. Medium  $F_{1, 18.50} = 5.22, p = 0.034$ , Small vs. Large  $F_{1, 18.42} = 13.31, p = 0.002$ , Medium vs. Large  $F_{1, 18.47} = 1.85, p = 0.19$ ). Reward evoked DA was also significantly higher for large rewards than for medium or small rewards 3 s post peak (Small vs. Medium  $F_{1, 27.41} = 6.01, p = 0.021$ , Small vs. Large  $F_{1, 27.39} = 27.55, p < 0.001$ , Medium vs. Large  $F_{1, 27.40} = 7.82, p < 0.001$ ), and 5 s post peak (Small vs. Medium  $F_{1, 21.21} = 4.46, p = 0.047$ , Small vs. Large  $F_{1, 21.11} = 23.47, p < 0.001$ , Medium vs. Large  $F_{1, 21.12} = 7.47, p = 0.012$ ). **e** Peak DA responses plotted as a function of reward number in the session, in blocks of 3 rewards (averaging across reward size). Average responses depicted as semi-transparent circles, and predicted values (estimated marginal means) from the statistical model represented as dashed lines. All error bars represent  $\pm$  standard error of the mean.

### GluA1 deletion disrupts within-session habituation of light cue evoked DA responses

The data presented above could reflect either a failure in habituation to the sensory-specific stimulus properties of the sucrose reward (e.g., its flavor, texture) or differences in hunger/motivation levels. Striatal DA responses can also be evoked by

neutral, non-rewarding stimuli, especially when those stimuli are novel [32, 34–36]. To test whether GluA1 deletion disrupts habituation of the DA response to purely sensory stimuli we next analyzed DA responses to neutral light cues using an established orienting task in which behavioral habituation is sensitive to GluA1 deletion [24, 25].





**Fig. 3** **GluA1 deletion disrupts within-session habituation of light cue evoked DA responses.** Average DA release to the LED light cue separated into the first (Early) and second (Late) half of the session to assess stimulus habituation. **a** Pictorial representation of relevant task parameters, assessing DA release in response to presentations of the LED light stimulus early and late in the session. **b** WT mice show significant habituation of DA responses to the LED. \* Simple effects revealed significant differences at 1–4 s into stimulus presentation,  $F_{1, 15.00} = 16.29$ ,  $p = 0.001$ ,  $F_{1, 15.50} = 12.90$ ,  $p = 0.003$ ,  $F_{1, 20.06} = 6.71$ ,  $p = 0.017$ ,  $F_{1, 24.27} = 4.38$ ,  $p = 0.047$ , respectively. **c**  $Gria1^{-/-}$  mice do not show habituation of DA responses to the LED. Inset bar graphs depict the peak DA estimated at 1 s post stimulus onset. All error bars represent  $\pm$  standard error of the mean.

Presentation of 10 s neutral light cues evoked robust and reliable phasic DA responses (Fig. 3). These signals were comparable in magnitude to the reward-evoked DA (Fig. 2), even though these cue-elicited DA responses were independent of any association with reward. Note, we found identical DA responses to a neutral light cue even in naïve mice with no prior exposure to rewards in the operant chamber (Supplementary Fig. 5).

We first looked for evidence of habituation in evoked DA signals that might occur with repeated presentations of light stimuli across the test session by comparing stimulus elicited DA responses early and late in the session (i.e., first vs. second half of the session; Fig. 3a). WT mice showed clear evidence of within-session habituation with significantly reduced late session DA signals after repeated presentations of the lights (Fig. 3b; WT mice; significant effects of EarlyLate  $F_{1, 15.00} = 16.29$ ,  $p = 0.001$ , EarlyLate  $\times$  Time  $F_{1, 45.48} = 9.15$ ,  $p = 0.004$ ). In contrast, DA responses remained high throughout the session in  $Gria1^{-/-}$  mice with no evidence of habituation of this signal (Fig. 3c;  $Gria1^{-/-}$  mice; no effects of EarlyLate  $F_{1, 8.00} = 0.67$ ,  $p = 0.44$ , or EarlyLate  $\times$  Time  $F_{1, 24.24} = 0.29$ ,  $p = 0.59$  interactions; Genotype differences supported by significant Genotype  $\times$  EarlyLate interaction  $F_{1, 23.00} = 7.63$ ,  $p = 0.011$ , and Genotype  $\times$  EarlyLate  $\times$  Time interaction  $F_{1, 23.00} = 6.34$ ,  $p = 0.019$ ). Importantly, when directly comparing DA release between genotypes, there was significantly higher peak DA in the  $Gria1^{-/-}$  mice, compared to WT mice, late in the session ( $F_{1, 28.60} = 4.34$ ,  $p = 0.046$ ), but no significant differences between genotypes early in the session ( $F_{1, 34.75} = 0.12$ ,  $p = 0.727$ ). Thus, mirroring the earlier results with unsignalled rewards and the robust behavioral impairments in short-term habituation reported previously in  $Gria1^{-/-}$  mice to a variety of different stimulus types [24, 25], deletion of *Gria1* impairs this within-session habituation of this stimulus elicited DA signal over repeated stimulus presentations, resulting in a hyperdopaminergic phenotype.

#### GluA1 deletion disrupts stimulus-specific habituation of light cue evoked DA responses

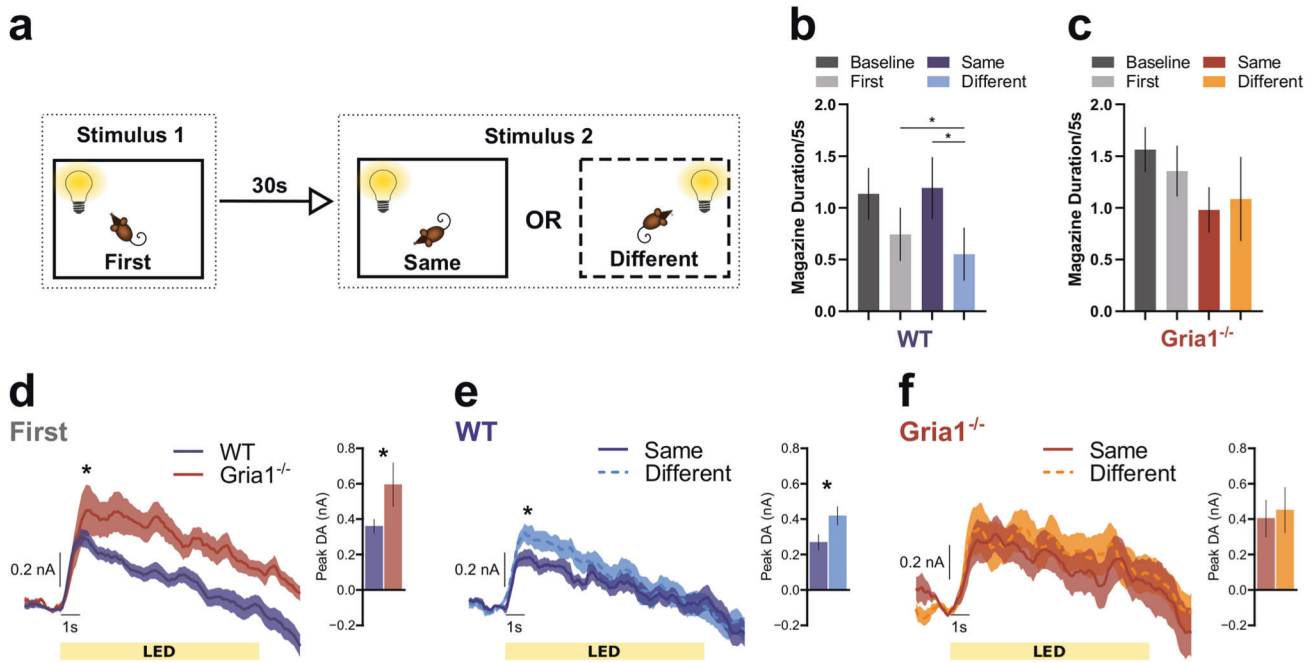
An important question is whether these observed differences in habituation reflect general changes in arousal and attention in the  $Gria1^{-/-}$  mice, or are instead a stimulus-specific effect reflecting

the recent history of stimulus presentations. We have previously demonstrated  $Gria1^{-/-}$  deficits in stimulus-specific habituation at the behavioral level in a number of different behavioral settings [25], and replicate this finding in the present task (Fig. 4a–c). If the habituation of cue evoked striatal DA release is stimulus specific, then the second “same” presentation of a target cue in a pairing should elicit lower DA signals than if a “different” cue is presented as the second target cue in a pair (e.g., LED  $\rightarrow$  LED DA response < House  $\rightarrow$  LED DA response) (Fig. 4a). In WT mice (Fig. 4e) presentation of the LED as the second stimulus of a pair elicited less DA if it was preceded by the same stimulus (i.e., the LED) as compared to a different stimulus (house light) (Same vs. Different  $F_{1, 77.16} = 4.22$ ,  $p = 0.043$ ). Thus, WT mice exhibited stimulus-specific habituation of DA responses. In contrast,  $Gria1^{-/-}$  mice did not show this stimulus-specific habituation effect (Fig. 4f); their DA signals to presentation of the second stimulus was the same, irrespective of the identity of the first stimulus (Same vs. Different  $F_{1, 77.16} = 0.23$ ,  $p = 0.627$ ). Interestingly, there was little, if any, stimulus-specific habituation to the house light within a trial in either genotype (Supplementary Fig. 3). These Genotype differences were supported by a significant Genotype  $\times$  HouseLED  $\times$  Stimulus Novelty interaction ( $F_{2, 46.00} = 3.50$ ,  $p = 0.038$ ). These stimulus-specific habituation effects in DA responses were also sensitive to the duration of the inter-stimulus interval (Supplementary Fig. 4), consistent with theories of habituation and with our previous findings [22]. Thus, we provide evidence that the magnitude of NAcc DA release to unpredicted presentations of sensory stimuli in WT mice undergoes stimulus-specific habituation. Crucially, disruption of this habituation process in  $Gria1^{-/-}$  mice results in the emergence of a relative amplification of dopaminergic responses to neutral sensory cues.

#### DISCUSSION

Aberrant salience is the dominant mechanism thought to underlie psychosis in neuropsychiatric disorders like schizophrenia, and it is commonly linked to elevated striatal DA [3]. However, there is still little known about its underlying aetiology. Using  $Gria1^{-/-}$  mice, a mouse model of impaired synaptic plasticity in schizophrenia, here we show the rapid emergence of a hyperdopaminergic state that is directly tied to deficits in short-term habituation in these animals, and thus to inappropriate and maladaptive levels of attention.

Classically, midbrain DA signals and DA release in the NAcc have been attributed to quantitative reward prediction errors that decrease as rewards are effectively predicted by other cues [37–39]. However, there is increasing evidence that the activity of midbrain DA neurons can also be influenced by the sensory properties of stimuli, particularly when those stimuli are novel, salient, and surprising [35, 40–44]. We saw clear, rapid and transient phasic increases in striatal DA levels in response to not only unsignalled naturalistic food rewards but also unsignalled, task irrelevant, neutral light cues. Furthermore, we also provide evidence that a component of these DA responses to unsignalled presentations of both neutral lights and rewards is sensitive to the recent temporal history of stimulus presentations as well as to reward size. This is consistent with recent evidence suggesting that DA neurons may respond more broadly to prediction errors beyond the reward domain [44]. Notably, these DA signals diminished with repeated exposure to the light cues and the rewards in wild-type mice. In contrast, in  $Gria1^{-/-}$  mice dopamine signals remained high and at levels comparable to the first novel stimulus presentation. Therefore, a hyperdopaminergic state emerged in  $Gria1^{-/-}$  mice in parallel with the attentional demands of the task. Thus, we can now provide a mechanistic link between the development of a hyperdopaminergic state and aberrant salience in which high levels of attention to stimuli are inappropriately maintained as a result of deficits in habituation.



**Fig. 4** *GluA1* deletion disrupts stimulus-specific habituation of light cue evoked dopamine responses. **a** Representation of the trial structure in the task. On each trial two stimuli were presented 30 s apart. The identity of stimulus 2 in each pair was either the same or different to stimulus 1. Mice have been shown to reduce attention to stimulus 2 when it is the same as stimulus 1, but attention remains high when stimulus 2 is different to stimulus 1 [24, 25]. This selective attentional effect is stimulus specific habituation. Magazine activity in WT (**b**) and KO (**c**) mice immediately prior to stimulus presentation (Baseline), during the first stimulus of a pair (First) and during the second stimulus of a pair depending on whether it is the same or a different stimulus to the first (Same and Different). Suppression of this magazine directed behavior during stimulus presentation, relative to baseline, provides a measure of a behavioral orienting response [24]. Planned comparisons revealed that WT mice showed significantly less suppression to the Same than the Different stimulus ( $F_{1, 44.01} = 3.18, p = 0.04$ ), and significantly more suppression to the Different stimulus than Baseline ( $F_{1, 44.01} = 4.54, p = 0.04$ ; all remaining  $F_{1, 44.01} < 2.06, ps > 0.16$ ) suggesting that suppression of magazine behavior to the light stimuli habituated in a stimulus specific manner. In contrast there was no evidence of habituation to the light stimuli in the KO mice (no significant differences between any Periods, all  $F_{1, 44.01} < 3.18, ps > 0.08$ ). This pattern of behavior replicates earlier findings [24], although the genotype by period interaction did not reach statistical significance (Genotype  $F_{1, 14.95} = 1.44, p = 0.25$ , Period  $F_{3, 44.11} = 2.08, p = 0.117$ , Genotype  $\times$  Period  $F_{3, 44.11} = 1.33, p = 0.28$ ). Average DA release to the LED light stimulus when it was stimulus 1 (**d**), and when it was stimulus 2 for the WT (**e**) and *Gria1*<sup>-/-</sup> mice (**f**). Inset bar graphs depict the peak DA estimated at 1 s post stimulus onset. All error bars represent  $\pm$  standard error of the mean.

The present data, combined with previous behavioral studies in *Gria1*<sup>-/-</sup> mice, demonstrate that *GluA1* dysfunction can lead to both aberrant salience and hyperdopaminergic signals in striatum [25]. These phenotypes are highly relevant to psychosis in schizophrenia given the numerous lines of evidence linking *GluA1* and associated synaptic plasticity processes with the disorder [11–15] (see also Supplementary Discussion). Furthermore, rather than glutamatergic deficits being distinct from dopaminergic hyperfunction, the present findings show how glutamatergic deficits can directly lead to dopaminergic hyperfunction [2, 45]. Thus, by increasing DA signals to environmental cues and generating inappropriate levels of attention such that stimuli remain “as if novel” when they would otherwise habituate, *GluA1* dysfunction effectively increases the window of contiguity which increases the likelihood that associations will form between cues [46, 47]. In this way, *GluA1* dysfunction provides a mechanism through which maladaptive associations could be formed between stimuli and events that would otherwise be perceived as unrelated, and thus for generating delusional beliefs.

So, what is the locus of these *GluA1* effects? Notably, we found no genotypic differences in electrically evoked DA release in anaesthetized *Gria1*<sup>-/-</sup> and WT mice, confirming that there were no differences in the intrinsic release properties of DA neurons in the *Gria1*<sup>-/-</sup> mice. Normal DA release has previously been reported in anaesthetized *Gria1*<sup>-/-</sup> mice using chronoamperometry in dorsal striatum, although DA clearance was significantly retarded [48]. We found no evidence for altered clearance in the

present study and this discrepancy may reflect either regional differences in the effect of *GluA1* deletion within the striatum, or differences between the FSCV and chronoamperometry approaches. Nevertheless, these data suggest that the hyperdopaminergic phenotype in *Gria1*<sup>-/-</sup> mice is unlikely to be due to differences in the intrinsic properties of DA neurons in these mice.

The hippocampus is an attractive alternative candidate. Hippocampal deficits in synaptic function and plasticity, including reduced *GluA1*, have long been associated with schizophrenia [8, 49–59]. The hippocampus can generate sensory expectations and acts as a comparator to compute surprise signals [60–63]. Consequently, it is implicated in habituation to spatial and non-spatial stimuli [64–67]. A hippocampal surprise signal could then be relayed to DA neurons in the VTA via established polysynaptic circuits [62, 68, 69], thus regulating DA cell activity which, in turn, can promote an increase in attention to novel stimuli via salience networks [70–73] (albeit in a sensory specific manner). A hippocampal surprise signal could also potentially modulate terminal DA release in NAcc directly [74, 75]. Notably, *GluA1*-dependent plasticity mechanisms in the hippocampus, particularly in CA2/3 subfields [76–78], contribute to the development of short-term memory representations as stimuli become familiar (see Supplementary Discussion). Thus, synaptic plasticity in the hippocampus is likely to be a key regulator of VTA DA cell activity which, in turn, can shape the levels of attention and behavioral resources focused on particular stimuli in the environment. Altered hippocampal-VTA connectivity is a key feature in

schizophrenia [79]. Furthermore, habituation to a range of neutral and emotional stimuli is significantly impaired in schizophrenic subjects and this correlates with impaired repetition suppression of BOLD activity in the hippocampus [27, 70, 80–82]. We cannot completely rule out the possibility that this phenotype is a consequence of developmental changes in *Gria1*<sup>-/-</sup> mice. However, *Gria1*<sup>-/-</sup> mice do not differ from WT mice on a range of relevant biomarkers [28, 83] and, importantly, the short-term habituation deficit can be rescued in adulthood by reintroduction of GluA1 into the hippocampus of adult *Gria1*<sup>-/-</sup> mice [78].

Future work is needed to understand how this aberrant salience mechanism might contribute to more complex behaviors with translational relevance to schizophrenia [84–87]. Indeed, *Gria1*<sup>-/-</sup> mice show a pattern of deficits consistent with cognitive symptoms in schizophrenia when tested for many of these complex behaviors with touch-screen tasks [25, 88]. This aberrant salience mechanism may account for the mixed efficacy of antipsychotic medication [5, 45, 89], which often targets dopamine D2 receptors. For example, the D2 antagonist haloperidol effectively treats locomotor hyperactivity in *Gria1*<sup>-/-</sup> mice but, in contrast, has no effect on short-term working memory performance in WT or *Gria1*<sup>-/-</sup> mice [90]. The mixed efficacy of antipsychotics targeting the dopaminergic system, both in patients and animal models, are again consistent with the idea that striatal hyperdopaminergia and aberrant salience may arise from multiple upstream mechanisms, reflecting the heterogeneity of schizophrenia.

To conclude, striatal hyperdopaminergia and aberrant salience may encompass a range of different mechanisms, reflecting the heterogeneity of schizophrenia. *Gria1* is one of many candidate genes and we do not rule out the possibility that other genetic and environmental disturbances could contribute to aberrant salience via different mechanisms and pathways [2–5, 9, 10]. We also do not exclude the possibility that different molecular mechanisms and different psychological processes underlie the altered DA function reported for dorsal striatum in schizophrenia [27, 91]. Nevertheless, these combined behavioral and neurochemical phenotypes in *Gria1*<sup>-/-</sup> mice may represent a core mechanism leading to the development of aberrant salience and psychosis as a result of deficits in glutamate synapses and synaptic plasticity in schizophrenia.

## DATA AVAILABILITY

All data and code for analyses presented in this article are available at: <https://doi.org/10.17605/OSF.IO/9F23M>.

## REFERENCES

- van Os J. 'Salience syndrome' replaces 'schizophrenia' in DSM-V and ICD-11: psychiatry's evidence-based entry into the 21st century? *Acta Psychiatr Scand*. 2009;120:363–72.
- Howes OD, Nour MM. Dopamine and the aberrant salience hypothesis of schizophrenia. *World Psychiatry*. 2016;15:3–4.
- Kapur S. Psychosis as a state of aberrant salience: a framework linking biology, phenomenology, and pharmacology in schizophrenia. *Am J Psychiatry*. 2003;160:13–23.
- Winton-Brown TT, Fusar-Poli P, Ungless MA, Howes OD. Dopaminergic basis of salience dysregulation in psychosis. *Trends Neurosci*. 2014;37:85–94.
- Howes OD, Kapur S. The dopamine hypothesis of schizophrenia: version III—the final common pathway. *Schizophr Bull*. 2009;35:549–62.
- Harrison PJ. The hippocampus in schizophrenia: a review of the neuropathological evidence and its pathophysiological implications. *Psychopharmacology (Berl)*. 2004;174:151–62.
- Harrison PJ, Weinberger DR. Schizophrenia genes, gene expression, and neuropathology: on the matter of their convergence. *Mol Psychiatry*. 2005;10:40–68.
- Harrison PJ. Recent genetic findings in schizophrenia and their therapeutic relevance. *J Psychopharmacol*. 2015;29:85–96.
- Schizophrenia Working Group of the Psychiatric Genomics Consortium, Ripke S, Neale BM, Corvin A, Walters JTR, Farh K-H, et al. Biological insights from 108 schizophrenia-associated genetic loci. *Nature*. 2014;511:421–7.
- Ripke S, O'Dushlaine C, Chambert K, Moran JL, Kähler AK, Akterin S, et al. Genome-wide association analysis identifies 13 new risk loci for schizophrenia. *Nat Genet*. 2013;45:1150–9.
- Eastwood SL, Kerwin RW, Harrison PJ. Immunohistochemical evidence for a loss of  $\alpha$ -amino-3-hydroxy-5-methyl-4-isoxazole propionate-preferring non-N-methyl-D-aspartate glutamate receptors within the medial temporal lobe in schizophrenia. *Biol Psychiatry*. 1997;41:636–43.
- Eastwood SL, McDonald B, Burnet PJ, Beckwith JP, Kerwin RW, Harrison PJ. Decreased expression of mRNAs encoding non-NMDA glutamate receptors GluR1 and GluR2 in medial temporal lobe neurons in schizophrenia. *Mol Brain Res*. 1995;29:211–23.
- Harrison PJ, McLaughlin D, Kerwin R. Decreased hippocampal expression of a glutamate receptor gene in schizophrenia. *Lancet*. 1991;337:450–2.
- Sokolov BP. Expression of NMDAR1, GluR1, GluR7, and KA1 glutamate receptor mRNAs is decreased in frontal cortex of "Neuroleptic-Free" schizophrenics: evidence on reversible up-regulation by typical neuroleptics. *J Neurochem*. 2002;71:2454–64.
- Kerwin R, Patel S, Meldrum B. Quantitative autoradiographic analysis of glutamate binding sites in the hippocampal formation in normal and schizophrenic brain post mortem. *Neuroscience*. 1990;39:25–32.
- Eastwood SL, Porter RHP, Harrison PJ. The effect of chronic haloperidol treatment on glutamate receptor subunit (GluR1, GluR2, KA1, KA2, NR1) mRNAs and glutamate binding protein mRNA in rat forebrain. *Neurosci Lett*. 1996;212:163–6.
- Eastwood SL, Story P, Burnet PJ, Heath P, Harrison PJ. Differential changes in glutamate receptor subunit messenger RNAs in rat brain after haloperidol treatment. *J Psychopharmacol*. 1994;8:196–203.
- Oretti RG, Spurlock G, Buckland PR, McGuffin P. Lack of effect of antipsychotic and antidepressant drugs on glutamate receptor mRNA levels in rat brains. *Neurosci Lett*. 1994;177:39–43.
- Meador-Woodruff JH, King RE, Damask SP, Bovenkerk KA. Differential regulation of hippocampal AMPA and kainate receptor subunit expression by haloperidol and clozapine. *Mol Psychiatry*. 1996;1:41–53.
- Rankin CH, Abrams T, Barry RJ, Bhatnagar S, Clayton DF, Colombo J, et al. Habituation revisited: an updated and revised description of the behavioral characteristics of habituation. *Neurobiol Learn Mem*. 2009;92:135–8.
- Sanderson DJ, Good MA, Seeburg PH, Sprengel R, Rawlins JNP, Bannerman DM. The role of the GluR-A (GluR1) AMPA receptor subunit in learning and memory. *Prog Brain Res*. 2008;169:159–78.
- Sanderson DJ, Good MA, Skelton K, Sprengel R, Seeburg PH, Rawlins JNP, et al. Enhanced long-term and impaired short-term spatial memory in GluA1 AMPA receptor subunit knockout mice: evidence for a dual-process memory model. *Learn Mem*. 2009;16:379–86.
- Sanderson DJ, Hindley E, Smeaton E, Denny N, Taylor A, Barkus C, et al. Deletion of the GluA1 AMPA receptor subunit impairs recency-dependent object recognition memory. *Learn Mem*. 2011;18:181–90.
- Sanderson DJ, Sprengel R, Seeburg PH, Bannerman DM. Deletion of the GluA1 AMPA receptor subunit alters the expression of short-term memory. *Learn Mem*. 2011;18:128–31.
- Barkus C, Sanderson DJ, Rawlins JNP, Walton ME, Harrison PJ, Bannerman DM. What causes aberrant salience in schizophrenia? A role for impaired short-term habituation and the GRIA1 (GluA1) AMPA receptor subunit. *Mol Psychiatry*. 2014;19:1060–70.
- Sanderson DJ, Bannerman DM. The role of habituation in hippocampus-dependent spatial working memory tasks: evidence from GluA1 AMPA receptor subunit knockout mice. *Hippocampus*. 2012;22:981–94.
- McCutcheon RA, Abi-Dargham A, Howes OD. Schizophrenia, dopamine and the striatum: from biology to symptoms. *Trends Neurosci*. 2019;42:205–20.
- Zamanillo D, Sprengel R, Hvalby O, Jensen V, Burnashev N, Rozov A, et al. Importance of AMPA receptors for hippocampal synaptic plasticity but not for spatial learning. *Science*. 1999;284:1805–11.
- Arnold MM, Burgeno LM, Phillips PEM. Fast-scan cyclic voltammetry in behaving animals. In: Covey E, Carter M, editors. *Basic electrophysiological methods*. Oxford University Press; 2015. pp. 108–33.
- Syed ECJ, Grima LL, Magill PJ, Bogacz R, Brown P, Walton ME. Action initiation shapes mesolimbic dopamine encoding of future rewards. *Nat Neurosci*. 2016;19:34–36.
- Phillips PEM, Robinson DL, Stuber GD, Carelli RM, Wightman RM. Real-time measurements of phasic changes in extracellular dopamine concentration in freely moving rats by fast-scan cyclic voltammetry. In: Wang JQ, editor. *Drugs of abuse. Methods in Molecular Medicine*, vol 79. New Jersey: Humana Press; 2003. pp. 443–64.



32. Schultz W, Stauffer WR, Lak A. The phasic dopamine signal maturing: from reward via behavioural activation to formal economic utility. *Curr Opin Neurobiol.* 2017;43:139–48.
33. Brown HD, McCutcheon JE, Cone JJ, Ragozzino ME, Roitman MF. Primary food reward and reward-predictive stimuli evoke different patterns of phasic dopamine signaling throughout the striatum. *Eur J Neurosci.* 2011;34:1997–2006.
34. Steinfels GF, Heym J, Strecker RE, Jacobs BL. Behavioral correlates of dopaminergic unit activity in freely moving cats. *Brain Res.* 1983;258:217–28.
35. Horvitz JC, Stewart T, Jacobs BL. Burst activity of ventral tegmental dopamine neurons is elicited by sensory stimuli in the awake cat. *Brain Res.* 1997;759:251–8.
36. Menegack W, Babayan BM, Uchida N, Watabe-Uchida M. Opposite initialization to novel cues in dopamine signaling in ventral and posterior striatum in mice. *Elife.* 2017;6:e21886.
37. Montague PR, Dayan P, Sejnowski TJ. A framework for mesencephalic dopamine systems based on predictive Hebbian learning. *J Neurosci.* 1996;16:1936–47.
38. Eshel N, Bukwich M, Rao V, Hemmelder V, Tian J, Uchida N. Arithmetic and local circuitry underlying dopamine prediction errors. *Nature.* 2015;525:243–6.
39. Day JJ, Roitman MF, Wightman RM, Carelli RM. Associative learning mediates dynamic shifts in dopamine signaling in the nucleus accumbens. *Nat Neurosci.* 2007;10:1020–8.
40. Ljungberg T, Apicella P, Schultz W. Responses of monkey dopamine neurons during learning of behavioral reactions. *J Neurophysiol.* 1992;67:145–63.
41. Bunzeck N, Düzal E. Absolute coding of stimulus novelty in the human substantia nigra/VTA. *Neuron.* 2006;51:369–79.
42. Horvitz J. Mesolimbocortical and nigrostriatal dopamine responses to salient non-reward events. *Neuroscience.* 2000;96:651–6.
43. Takahashi YK, Batchelor HM, Liu B, Khanna A, Morales M, Schoenbaum G. Dopamine neurons respond to errors in the prediction of sensory features of expected rewards. *Neuron.* 2017;95:1395–e3.
44. Gardner MPH, Schoenbaum G, Gershman SJ. Rethinking dopamine as generalized prediction error. *Proc R Soc B Biol Sci.* 2018;285:20181645.
45. Moghaddam B, Javitt D. From revolution to evolution: the glutamate hypothesis of schizophrenia and its implication for treatment. *Neuropsychopharmacology.* 2012;37:4–15.
46. Sharpe MJ, Chang CY, Liu MA, Batchelor HM, Mueller LE, Jones JL, et al. Dopamine transients are sufficient and necessary for acquisition of model-based associations. *Nat Neurosci.* 2017;20:735–42.
47. Sharpe MJ, Batchelor HM, Mueller LE, Yun Chang C, Maes EJP, Niv Y, et al. Dopamine transients do not act as model-free prediction errors during associative learning. *Nat Commun.* 2020;11:106.
48. Wiedholz LM, Owens WA, Horton RE, Feyder M, Karlsson R-M, Hefner K, et al. Mice lacking the AMPA GluR1 receptor exhibit striatal hyperdopaminergia and 'schizophrenia-related' behaviors. *Mol Psychiatry.* 2008;13:631–40.
49. Narr KL, Thompson PM, Szeszko P, Robinson D, Jang S, Woods RP, et al. Regional specificity of hippocampal volume reductions in first-episode schizophrenia. *Neuroimage.* 2004;21:1563–75.
50. Wyatt RJ. Early intervention with neuroleptics may decrease the long-term morbidity of schizophrenia. *Schizophr Res.* 1991;5:201–2.
51. Heckers S, Konradi C. GABAergic mechanisms of hippocampal hyperactivity in schizophrenia. *Schizophr Res.* 2015;167:4–11.
52. Ho NF, Iglesias JE, Sum MY, Kuswanto CN, Sitoh YY, De Souza J, et al. Progression from selective to general involvement of hippocampal subfields in schizophrenia. *Mol Psychiatry.* 2017;22:142–52.
53. Kawasaki Y, Suzuki M, Maeda Y, Urata K, Yamaguchi N, Matsuda H, et al. Regional cerebral blood flow in patients with schizophrenia. *Eur Arch Psychiatry Clin Neurosci.* 1992;241:195–200.
54. Heckers S, Rauch S, Goff D, Savage C, Schacter D, Fischman A, et al. Impaired recruitment of the hippocampus during conscious recollection in schizophrenia. *Nat Neurosci.* 1998;1:318.1998 14.
55. Medoff DR, Holcomb HH, Lahti AC, Tamminga CA. Probing the human hippocampus using rCBF: contrasts in schizophrenia. *Hippocampus.* 2001;11:543–50.
56. Molina V, Reig S, Pascau J, Sanz J, Sarramea F, Gisbert JD, et al. Anatomical and functional cerebral variables associated with basal symptoms but not risperidone response in minimally treated schizophrenia. *Psychiatry Res Neuroimaging.* 2003;124:163–75.
57. Steen RG, Mull C, McClure R, Hamer RM, Lieberman JA. Brain volume in first-episode schizophrenia. *Br J Psychiatry.* 2006;188:510–8.
58. Schobel SA, Lewandowski NM, Corcoran CM, Moore H, Brown T, Malaspina D, et al. Differential targeting of the CA1 subfield of the hippocampal formation by schizophrenia and related psychotic disorders. *Arch Gen Psychiatry.* 2009;66:938.
59. Kühn S, Musso F, Mobascher A, Warbrick T, Winterer G, Gallinat J. Hippocampal subfields predict positive symptoms in schizophrenia: first evidence from brain morphometry. *Transl Psychiatry.* 2012;2:e127.
60. Bornstein AM, Daw ND. Dissociating hippocampal and striatal contributions to sequential prediction learning. *Eur J Neurosci.* 2012;35:1011–23.
61. Kumaran D, Maguire EA. An unexpected sequence of events: mismatch detection in the human hippocampus. *PLoS Biol.* 2006;4:e424.
62. Vinogradova OS. Hippocampus as comparator: role of the two input and two output systems of the hippocampus in selection and registration of information. *Hippocampus.* 2001;11:578–98.
63. Gray JA, McNaughton N. *The neuropsychology of anxiety.* 2nd ed. London, England: Oxford University Press; 2003.
64. Honey RC, Marshall VJ, McGregor A, Fetter J, Good M. Revisiting places passed: sensitization of exploratory activity in rats with hippocampal lesions. *Q J Exp Psychol.* 2007;60:625–34.
65. Good M, Honey RC. Dissociable effects of selective lesions to hippocampal subsystems on exploratory behavior, contextual learning, and spatial learning. *Behav Neurosci.* 1997;111:487–93.
66. Honey R. Associative components of recognition memory. *Curr Opin Neurobiol.* 2000;10:200–4.
67. Honey RC, Good M. Associative modulation of the orienting response: distinct effects revealed by hippocampal lesions. *J Exp Psychol Anim Behav Process.* 2000;26:3–14.
68. Lisman JE, Grace AA. Review the hippocampal-VTA loop: controlling the entry of information into long-term memory the role of the hippocampus in producing novelty-dependent firing of VTA cells recordings from dopaminergic cells in awake monkeys. *Neuron.* 2005;46:703–13.
69. Aston-Jones G, Cohen JD. An integrative theory of locus coeruleus-norepinephrine function: adaptive gain and optimal performance. *Annu Rev Neurosci.* 2005;28:403–50.
70. Schott BH, Voss M, Wagner B, Wustenberg T, Duzel E, Behr J. Fronto-limbic novelty processing in acute psychosis: disrupted relationship with memory performance and potential implications for delusions. *Front Behav Neurosci.* 2015;9:144.
71. McCutcheon RA, Nour MM, Dahoun T, Jauhar S, Pepper F, Expert P, et al. Mesolimbic dopamine function is related to salience network connectivity: an integrative positron emission tomography and magnetic resonance study. *Biol Psychiatry.* 2019;85:368–78.
72. White TP, Joseph V, Francis ST, Liddle PF. Aberrant salience network (bilateral insula and anterior cingulate cortex) connectivity during information processing in schizophrenia. *Schizophr Res.* 2010;123:105–15.
73. Seeley WW, Menon V, Schatzberg AF, Keller J, Glover GH, Kenna H, et al. Dissociable intrinsic connectivity networks for salience processing and executive control. *J Neurosci.* 2007;27:2349–56.
74. Lisman JE, Grace AA. The Hippocampal-VTA loop: controlling the entry of information into long-term memory. *Neuron.* 2005;46:703–13.
75. Floresco SB, West AR, Ash B, Moorel H, Grace AA. Afferent modulation of dopamine neuron firing differentially regulates tonic and phasic dopamine transmission. *Nat Neurosci.* 2003;6:968–73.
76. Freudenberg F, Marx V, Seeburg PH, Sprengel R, Celikel T. Circuit mechanisms of GluA1-dependent spatial working memory. *Hippocampus.* 2013;23:1359–66.
77. Segev A, Yanagi M, Scott D, Southcott SA, Lister JM, Tan C, et al. Reduced GluN1 in mouse dentate gyrus is associated with CA3 hyperactivity and psychosis-like behaviors. *Mol Psychiatry.* 2020;25:2832–43.
78. Bygrave AM, Jahans-Price T, Wolff AR, Sprengel R, Kullmann DM, Bannerman DM, et al. Hippocampal-prefrontal coherence mediates working memory and selective attention at distinct frequency bands and provides a causal link between schizophrenia and its risk gene GRIA1. *Transl Psychiatry.* 2019;9:142.
79. Winton-Brown T, Schmidt A, Roiser JP, Howes OD, Egerton A, Fusar-Poli P, et al. Altered activation and connectivity in a hippocampal-basal ganglia-midbrain circuit during salience processing in subjects at ultra high risk for psychosis. *Transl Psychiatry.* 2017;7:e1245.
80. Heckers S, Goff D, Weiss AP. Reversed hemispheric asymmetry during simple visual perception in schizophrenia. *Psychiatry Res.* 2002;116:25–32.
81. Holt DJ, Weiss AP, Rauch SL, Wright CI, Zalesak M, Goff DC, et al. Sustained activation of the hippocampus in response to fearful faces in schizophrenia. *Biol Psychiatry.* 2005;57:1011–9.
82. Williams LE, Blackford JU, Luksik A, Gauthier I, Heckers S. Reduced habituation in patients with schizophrenia. *Schizophr Res.* 2013;151:124–32.
83. Jensen V, Kaiser KMM, Borchardt T, Adelman G, Rozov A, Burnashev N, et al. A juvenile form of postsynaptic hippocampal long-term potentiation in mice deficient for the AMPA receptor subunit GluR-A. *J Physiol.* 2003;553:843–56.
84. Nilsson SRO, Fejgin K, Gastambide F, Vogt MA, Kent BA, Nielsen V, et al. Assessing the cognitive translational potential of a mouse model of the 22q11.2 microdeletion syndrome. *Cereb Cortex.* 2016;26:3991–4003.
85. Nilsson SRO, Heath CJ, Takillah S, Didiene S, Fejgin K, Nielsen V, et al. Continuous performance test impairment in a 22q11.2 microdeletion mouse model: improvement by amphetamine. *Transl Psychiatry.* 2018;8:247.
86. Bristow GC, Thomson DM, Openshaw RL, Mitchell EJ, Pratt JA, Dawson N, et al. 16p11 duplication disrupts hippocampal-orbitofrontal-amygdala connectivity,



- revealing a neural circuit endophenotype for schizophrenia. *Cell Rep.* 2020;31:107536.
87. Zeleznikow-Johnston AM, Renoir T, Churilov L, Li S, Burrows EL, Hannan AJ. Touchscreen testing reveals clinically relevant cognitive abnormalities in a mouse model of schizophrenia lacking metabotropic glutamate receptor 5. *Sci Rep.* 2018;8:1–10.
  88. Barkus C, Feyder M, Graybeal C, Wright T, Wiedholz L, Izquierdo A, et al. Do GluA1 knockout mice exhibit behavioral abnormalities relevant to the negative or cognitive symptoms of schizophrenia and schizoaffective disorder? *Neuropharmacology.* 2012;62:1263–72.
  89. Howes OD, Hird EJ, Adams RA, Corlett PR, McGuire P. Aberrant salience, information processing, and dopaminergic signaling in people at clinical high risk for psychosis. *Biol Psychiatry.* 2020;88:304–14.
  90. Boerner T, Bygrave AM, Chen J, Fernando A, Jackson S, Barkus C, et al. The group II metabotropic glutamate receptor agonist LY354740 and the D2 receptor antagonist haloperidol reduce locomotor hyperactivity but fail to rescue spatial working memory in GluA1 knockout mice. *Eur J Neurosci.* 2017;45:912.
  91. McCutcheon R, Beck K, Jauhar S, Howes OD. Defining the locus of dopaminergic dysfunction in schizophrenia: a meta-analysis and test of the mesolimbic hypothesis. *Schizophr Bull.* 2018;44:1301–11.

## ACKNOWLEDGEMENTS

The work was supported by a Wellcome Trust Senior Research Fellowship to DMB (grant no. 087736) and MEW (grant no. 202831/Z/16/Z), Medical Research Council (UK) grant to DMB, MEW, and PJH (grant no. MR/N004396/1), and a BBSRC (UK) Case Studentship to TB (grant no. BB/J500446/1). For the purpose of open access, the author has applied a CC BY public copyright license to any Author Accepted Manuscript version arising from this submission. RS receives support from the Ingeborg Ständer Foundation. We would like to thank Greg Daubney for histology, and Katie Hewitt for laboratory facility management and support, and Lauren M Burgeno for technical assistance with fast-scan cyclic voltammetry.

## AUTHOR CONTRIBUTIONS

MCP: conceptualization, methodology, software, formal analysis, investigation, data curation, validation, visualization, writing—original draft, review and editing. TB: conceptualization, methodology, software, formal analysis, investigation, data curation, visualization, funding acquisition. TJ-P: conceptualization, methodology, software, formal analysis, investigation, data curation, validation, writing—review and editing, visualization. AH: investigation. RS: resources. GG: funding acquisition, supervision. DJS: methodology, supervision. PJH: conceptualization, funding

acquisition. MEW: conceptualization, methodology, supervision, resources, funding acquisition, writing—original draft, review and editing. DMB: conceptualization, methodology, supervision, resources, funding acquisition, writing—original draft, review and editing.

## COMPETING INTERESTS

GG was an employee of Eli Lilly & Co at the time of research and is now an employee of COMPASS Pathways. All remaining authors declare that they have no conflict of interest.

## ADDITIONAL INFORMATION

**Supplementary information** The online version contains supplementary material available at <https://doi.org/10.1038/s41380-022-01861-8>.

**Correspondence** and requests for materials should be addressed to Marios C. Panayi, Mark E. Walton or David M. Bannerman.

**Reprints and permission information** is available at <http://www.nature.com/reprints>

**Publisher's note** Springer Nature remains neutral with regard to jurisdictional claims in published maps and institutional affiliations.



**Open Access** This article is licensed under a Creative Commons Attribution 4.0 International License, which permits use, sharing, adaptation, distribution and reproduction in any medium or format, as long as you give appropriate credit to the original author(s) and the source, provide a link to the Creative Commons license, and indicate if changes were made. The images or other third party material in this article are included in the article's Creative Commons license, unless indicated otherwise in a credit line to the material. If material is not included in the article's Creative Commons license and your intended use is not permitted by statutory regulation or exceeds the permitted use, you will need to obtain permission directly from the copyright holder. To view a copy of this license, visit <http://creativecommons.org/licenses/by/4.0/>.

© The Author(s) 2022